

HEALTH AND WELLNESS WITH EVERY SWIM



## MARKET LEADING FEATURES



24 Hour Circulating  
Sand Filtration



Automatic Chemical  
Dosing System



Dynamic Swim  
Resistance Jets



ST4 Touch Screen

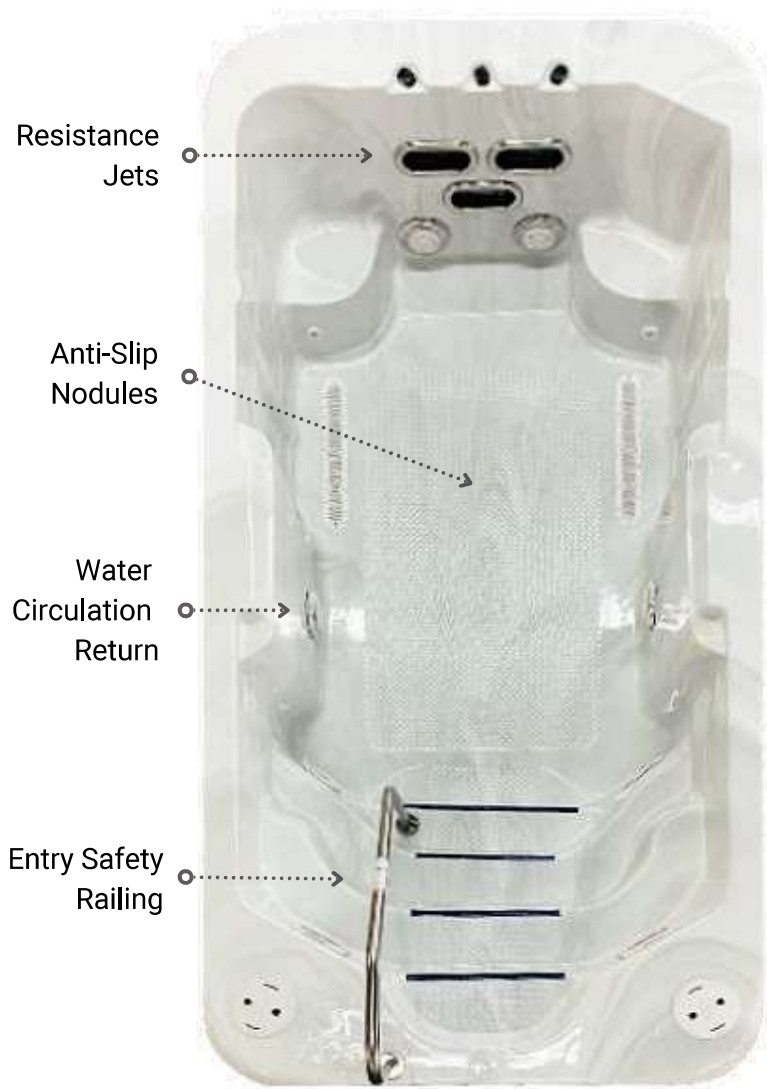


Control My Spa™



Inside & Outside Use

## Model 160C



## Options

### Durable Synthetic All-Weather Woodgrain



Driftwood



Driftwood  
w. Carbon Fiber Corners



Walnut



Walnut  
w. Carbon Fiber Corners



Charcoal



Charcoal  
w. Carbon Fiber Corners

### Acrylic



Sterling Marble

## Specifications

**Dimensions (cm/in)**

L:488 x W:229 x H:161 cm / L:192" x W:90" x H:63.5"

**Filled Weight (kg/lbs)**

9306 kg / 20516 lbs

**Dry Weight (kg/lbs)**

1356 kg / 2990 lbs

**Water Capacity (L/gal)**

7950 L / 2100 Gallons

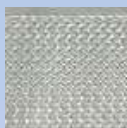
**Electrical (V)**

240V (60A Breaker)

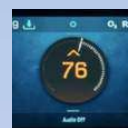
## FEATURES



**24 Hour Circulating Sand Filter**



**Anti-Slip Floor**



**SpaTouch4 Touchscreen**



**Air Controls**



**Safety Handrail**



**Control My Spa™**



**Automated Chemical Dosing System**



**Easy Access Safety Steps**



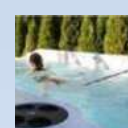
**Swim Tether Anchor Plate**



**3 Swim Resistance River Jets**



**Premium Weather Shield Cover**



**Swim Tether**



*\* Full foam insulation available on all models.*



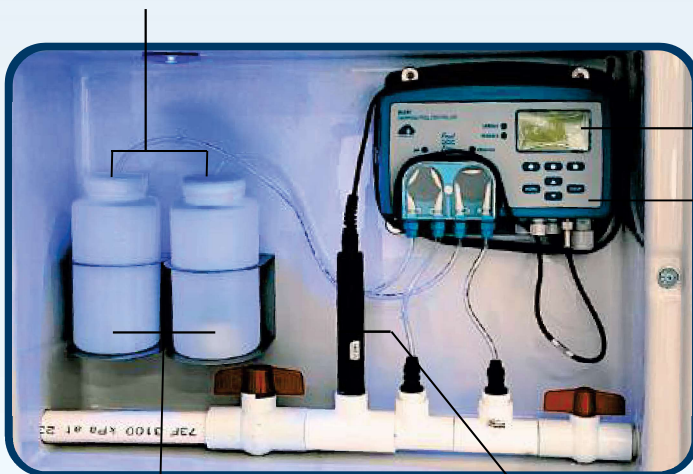
### Automated Chemical Dosing System

This system automatically balances chemicals in your spa, eliminating guesswork and reducing manual intervention, making water maintenance effortless and consistent.

**Easy Access:** Automatic chemical dispensing systems that are easily accessible, ensuring the correct balance of sanitizers and water treatments with minimal manual effort.

**Precise Dosing:** Accurate, consistent dispensing to maintain water quality and reduce chemical wastage.

#### *Hassle Free Chemical Replacement*



*Easy-to-Understand Operational Display*

*Automatic Safe Chemical Monitoring*

*100ml Chemical Bottles*

*Automates pH and Chlorine Levels*

**Automatic dosing system overview video:**



### 24 Hour Circulating NSF Approved Sand Filter

The 24 hour continuous filtration system keeps water clean and clear continuously, reducing the need for frequent maintenance and ensuring hassle-free water care.

#### Advanced Filtration System:

- Commercial Sand Filter
- 16HP Pumps (4 x 4HP)
- High-efficiency filters to maintain clean and hygienic water conditions.
- Automated cleaning cycles to reduce maintenance efforts.
- High-Capacity Sand Filters: Long-lasting filters that capture impurities efficiently and require less frequent replacement.

#### Designed for easy removal and servicing:



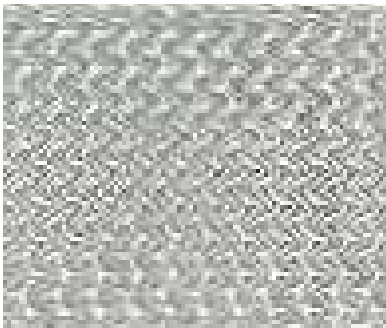
## Designed for Safe Use in Commercial Settings

Coast Spas Commercial Swim Spas are built with safety as a top priority, featuring secure access points, safety rails, non-slip flooring, and durable construction to ensure a safe and reliable experience for all users in high-traffic, commercial settings.



### Safe & Easy Access Steps

The integrated steps in Coast Spas' Commercial Swim Spas are designed for secure, stable entry and exit, minimizing the risk of slips and falls to ensure safe access for all users. The Commercial Swim Spa features four steps with contrasting color markings on the step edges, enhancing visibility and user safety. Each step is a uniform 10" in height, descending to the base with a stylish, anti-slip design. This setup not only meets industry safety standards but also improves accessibility for users of all abilities, offering a safer and more reliable experience.



### Anti-Slip Textured Floor

The anti-slip textured floor in all Coast Spas' Commercial Swim Spas is designed to enhance safety, significantly reducing the risk of slipping, even in wet conditions. This feature ensures secure footing for a wide range of users, including children, seniors, and individuals with mobility challenges, prioritizing safety at all times. The durable acrylic shell of the swim spa offers excellent moisture resistance, easy maintenance, and enhanced comfort. Its smooth, curved design not only adds aesthetic appeal but also prevents dirt and bacteria from accumulating in sharp corners, allowing for quick and thorough cleaning. This combination of safety, hygiene, and functionality makes it an ideal choice for commercial swim spas and hot tubs.



### Safety Rail Support

The safety rail in all Coast Spas' Commercial Swim Spas provides added stability for users when entering or exiting the swim spa, enhancing confidence, and reducing the risk of slips, falls, or accidents. To meet safety and health regulations, these spas are equipped with removable handrails placed within 2.5 feet of the steps, ensuring easy and safe access to the swimming area. When the spa is not in use, the handrails can be quickly removed, allowing for the placement of a safety cover for added protection and peace of mind. This thoughtful, user-friendly design combines safety and convenience, making the swim spa experience both secure and enjoyable.



### VGB Approved Drainage

Coast Freshe Commercial Drain Requirement: Commercial-grade floor drains are compliant with the Virginia Graeme Baker Pool & Spa Safety Act (VGB Act) to prevent entrapment hazards caused by powerful suction from the water circulation system.

### Important Safety Note

Each Coast Spas Swim Commercial Spa installation requires regional health approval. Contact local authorities in your area for health guidelines. All Swim Spa shell components are NSF listed and VGB compliant or certificate compliant. Technical support can be provided to your engineer or design consultant for recommended equipment selection. Contact the Coast Spas Commercial office for additional information.