

John Smith

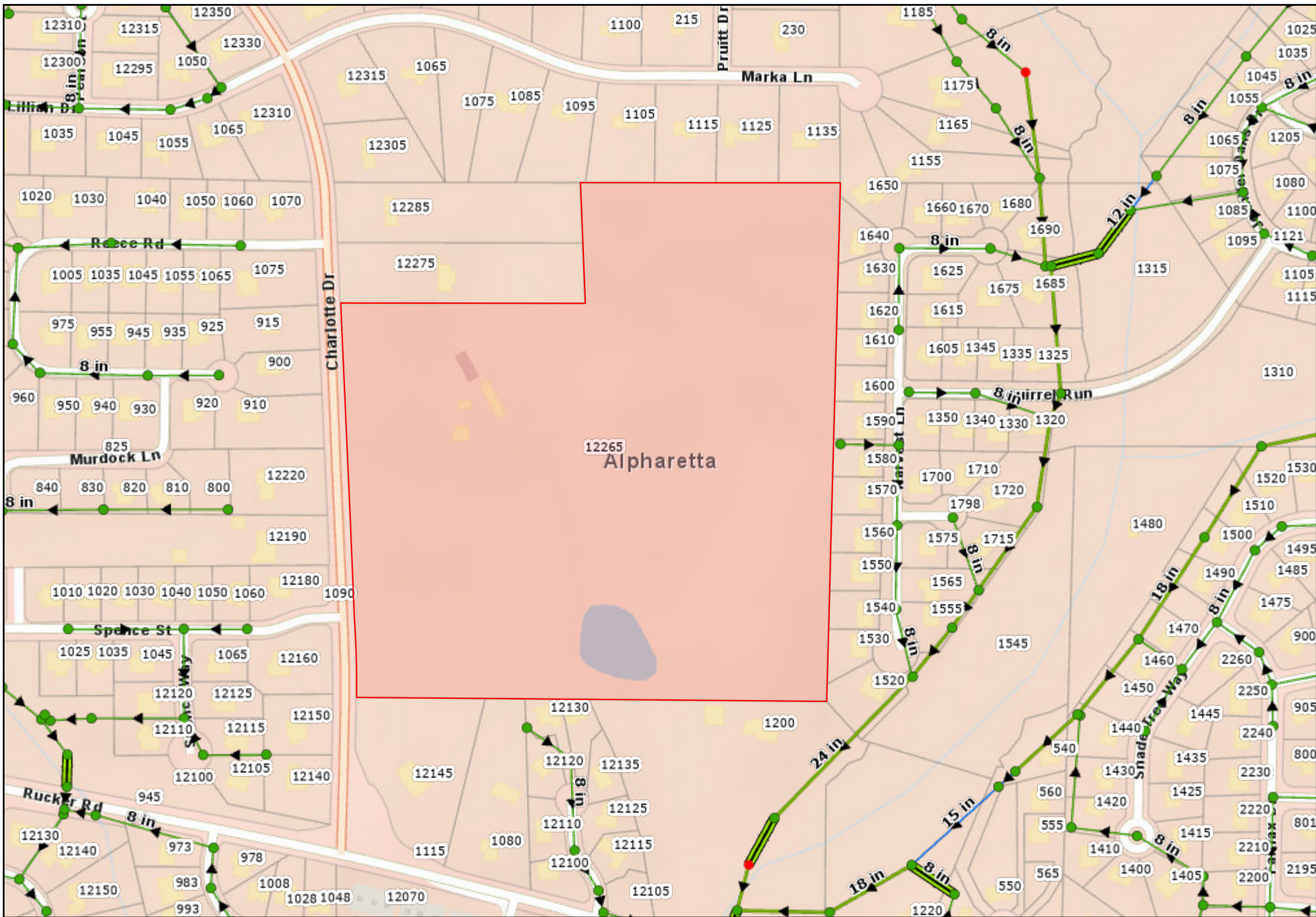
From: Bechara, Alberto <Alberto.Bechara@fultoncountyga.gov>
Sent: Tuesday, May 3, 2022 2:10 PM
To: John Smith
Subject: RE: confirmation of water and sewer service
Attachments: sewer vicinity MAp for 0 CHARLOTTE DR PID 22434012450230.pdf; Water vicinity MAp for 0 CHARLOTTE DR PID 22434012450230.pdf

John

This email serve as a sewer and water availability for your Parcel ID 22434012450230 aka 0 CHARLOTTE DR Tract in the City of Alpharetta. Fulton County Department of Public Works manage and maintain water and sewer in the vicinity of the Parcel. This Parcel is located in the Big Creek Sewer Service Area, sewer manhole # SMBC2761508 , adjacent west of the reference Parcel ID and Manhole SMBC2709880 adjacent south of the Parcel have been identified as a collection point that can service this location (see attached sewer vicinity map). In addition there exists an 8 inch water main along Charlotte Drive as shown in the attached water vicinity map. Let me know if you have any questions



Alberto Bechara, P.E., CPM®
Engineering Administrator
Department of Public Works | Technical Services Division
141 Pryor Street, SW | Suite 6001 | Atlanta GA 30303
404-612-5610 (office)
678-338-1652 (cell)
Connect with Fulton County: [Website](#) | [Facebook](#) | [Twitter](#) | [Instagram](#) | [FGTV](#) | [#OneFulton E-News](#)



0 0.06 0.11 0.17 mi

Water Resources

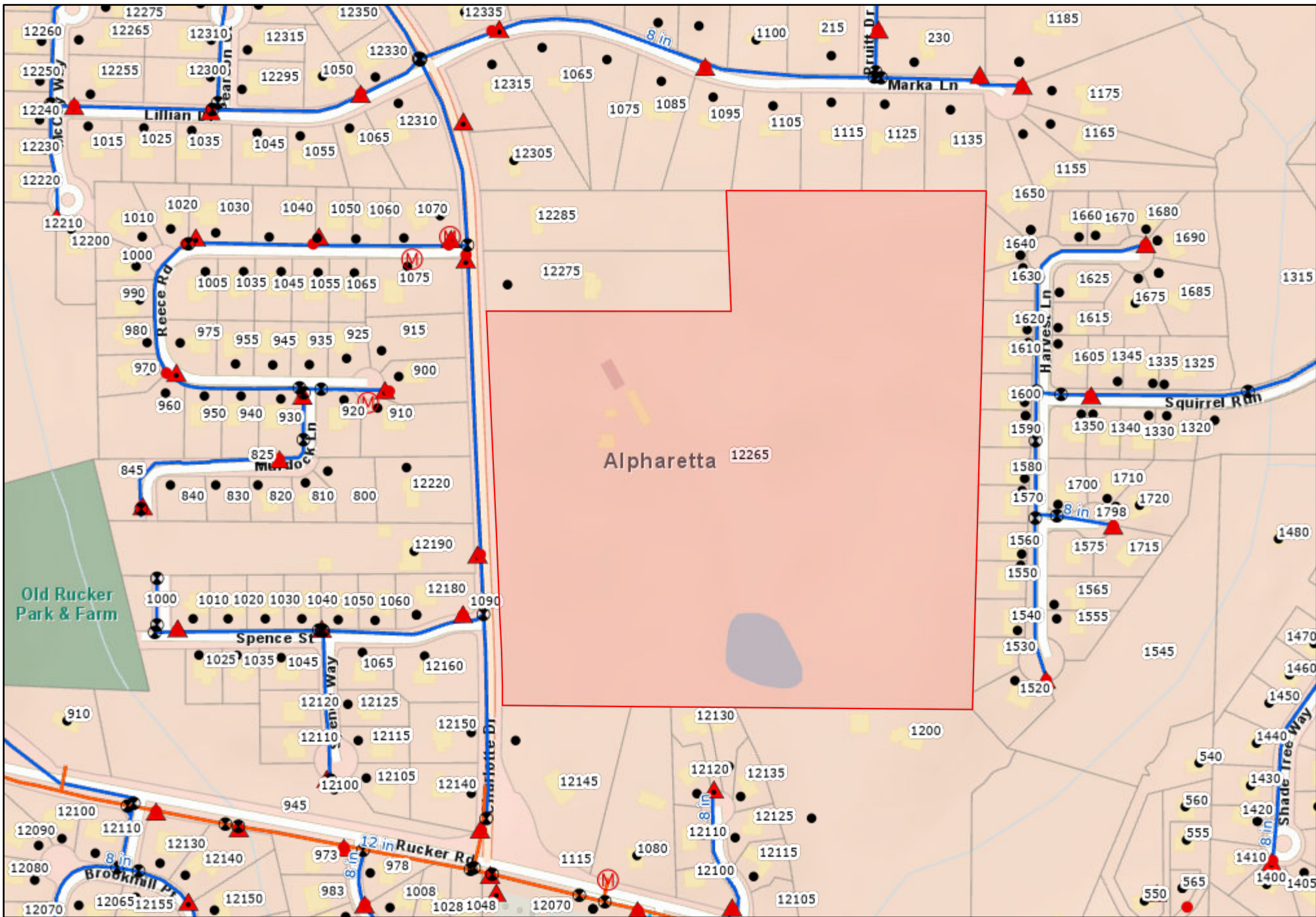
Date: 5/3/2022

Map Size: 8.5x11 (LETTER)

Fulton County provides the data on this map for your personal use "as is". The data are not guaranteed to be accurate, correct, or complete. The feature locations depicted in these maps are approximate and are not necessarily accurate to surveying or engineering standards. Fulton County assumes no responsibility for losses resulting from the use these data, even if Fulton County is advised of the possibility of such losses.



Prepared By:
GIS Section
Water Resources Department
Fulton County Government



0 0.06 0.11 0.17 mi

Water Resources

Date: 5/3/2022

Map Size: 8.5x11 (LETTER)

Fulton County provides the data on this map for your personal use "as is". The data are not guaranteed to be accurate, correct, or complete. The feature locations depicted in these maps are approximate and are not necessarily accurate to surveying or engineering standards. Fulton County assumes no responsibility for losses resulting from the use these data, even if Fulton County is advised of the possibility of such losses.



Prepared By:
GIS Section
Water Resources Department
Fulton County Government