

The Tidewater 1611F

Plan #: 1611F-2S-1F-02

Elevation : 'B'

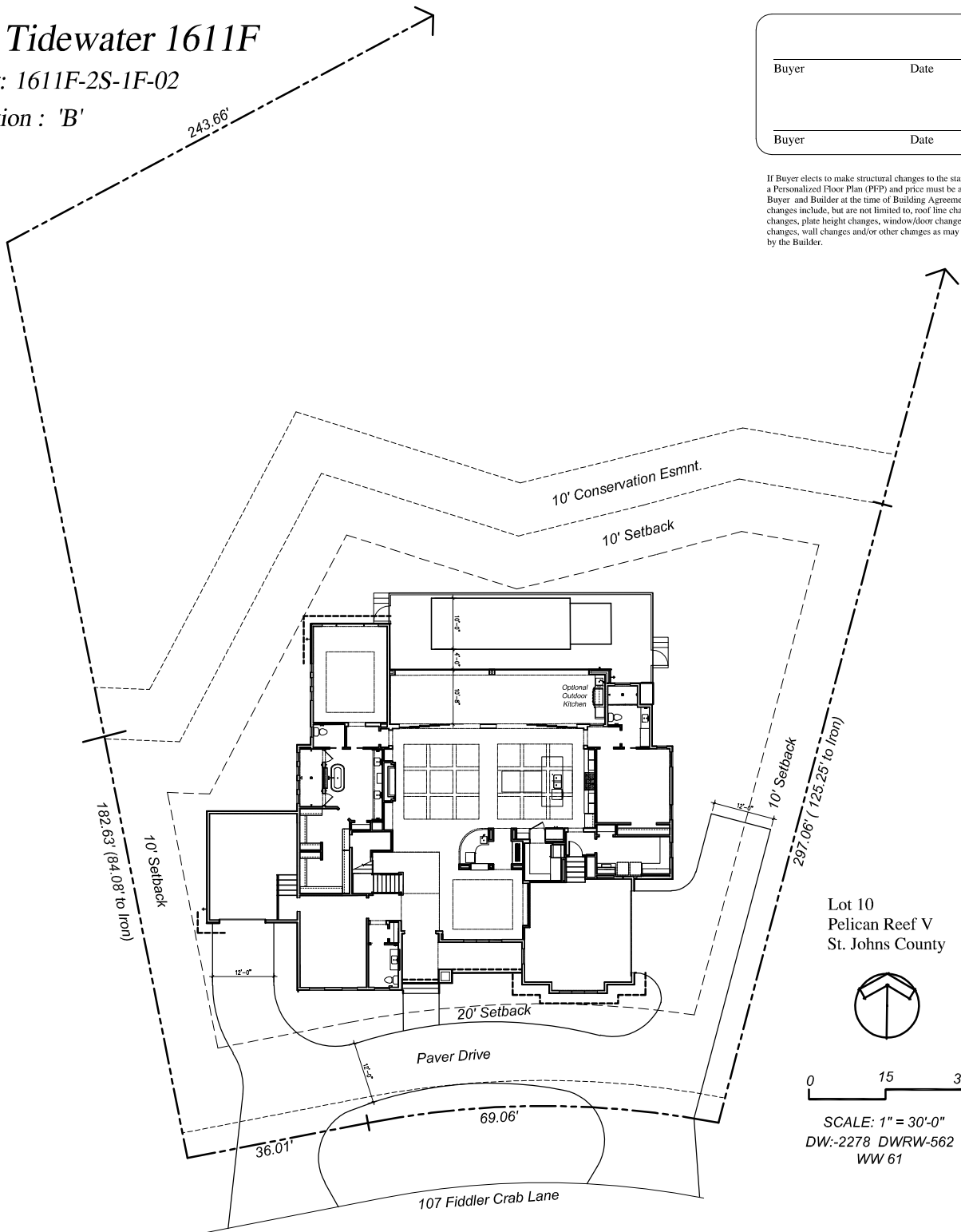
Buyer

Date

Buyer

Date

If Buyer elects to make structural changes to the standard plans, a Personalized Floor Plan (PFP) and price must be approved by Buyer and Builder at the time of Building Agreement. Structural changes include, but are not limited to, roof line changes, elevation changes, plate height changes, window/door changes, ceiling recess changes, wall changes and/or other changes as may be determined by the Builder.



Lot 10
Pelican Reef V
St. Johns County



0 15 30

SCALE: 1" = 30'-0"
DW:-2278 DWRW-562
WW 61

Note: This plan is the sole & exclusive property of Arthur Rutenberg Homes, Inc. The reproduction, use, or modification of this plan, for any purpose other than building with Arthur Rutenberg or its authorized franchises, is strictly prohibited.

Note: This conceptual site plan is deemed reliable but not guaranteed with regard to lot lines, setbacks, elevations, easements, conservation areas, maritime hammock areas, utilities, etc. All data will need to be verified by a professional land surveyor when doing full boundary, topographical and tree surveys; therefore, all information contained on this conceptual site plan should be considered preliminary and subject to change.

Note: Plan information is conceptual only. Certain items may be changed at production stage.

Franchise: #61 - Marcus Allen Homes Inc.
File #: Lot 10 - Pelican Reef V
Drawn By: DRA
Date: July 28, 2020

A Custom Residence for:
The Wilson Family

AR HOMES[™]
BY ARTHUR RUTENBERG

The Tidewater 1611F

Plan #: 1611F-2S-1F-02

Elevation : 'B'

Plan #1611F - Elev 'B'

1st - Living	3,307 S.F.
2nd - Living	1,520 S.F.
Lanai	452 S.F.
Entry	173 S.F.
Garage 1	469 S.F.
Garage 2	386 S.F.
Balcony	223 S.F.
Unfin. Flex Space	275 S.F.
Total	6,805 S.F.

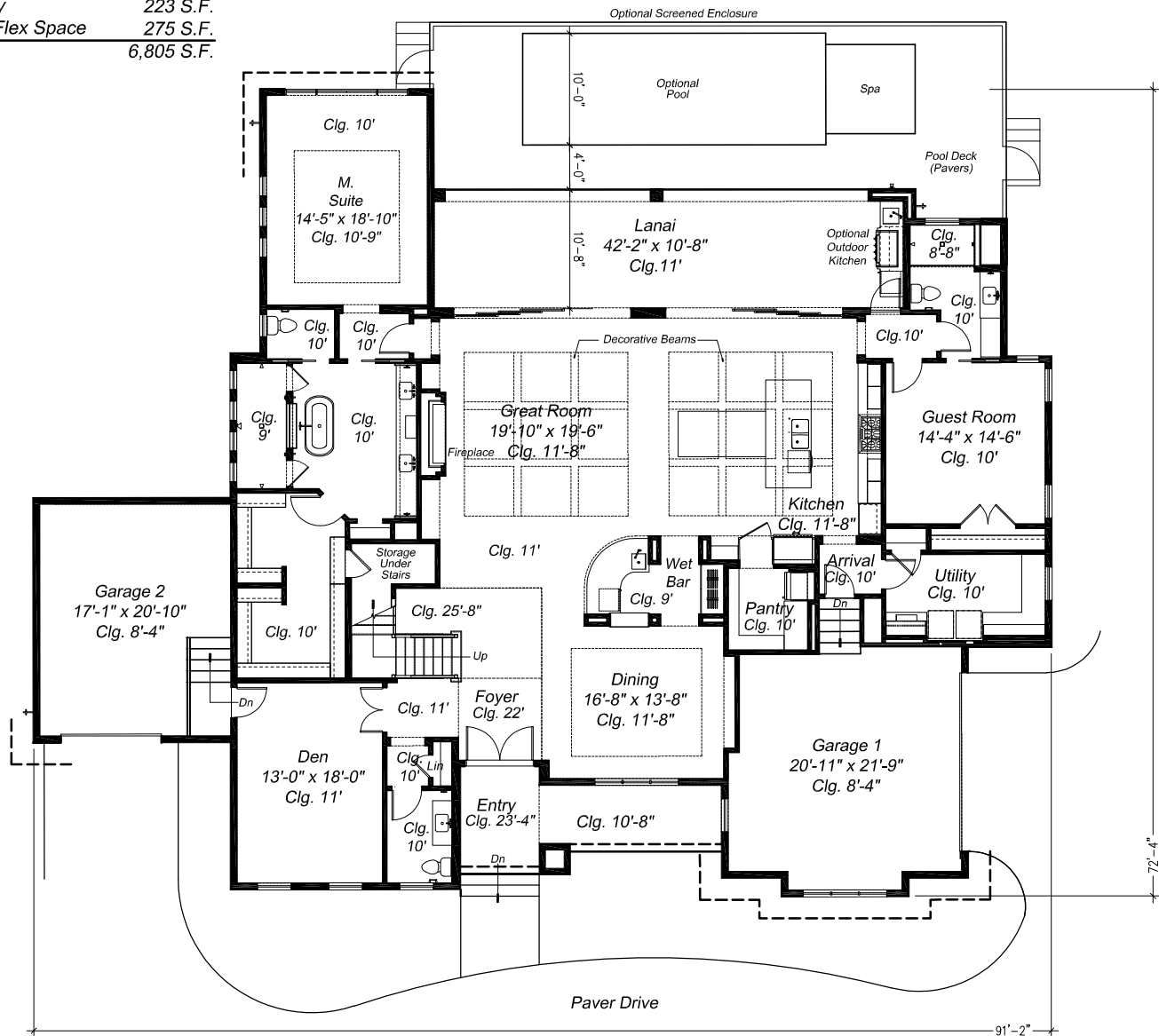
Buyer

Date

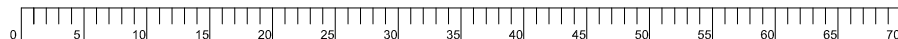
Buyer

Date

If Buyer elects to make structural changes to the standard plans, a Personalized Floor Plan (PFP) and price must be approved by Buyer and Builder at the time of Building Agreement. Structural changes include, but are not limited to, roof line changes, elevation changes, plate height changes, window/door changes, ceiling recess changes, wall changes and/or other changes as may be determined by the Builder.



MEASUREMENT IN FEET



This drawing is intended as a visual aid only. Construction drawings and Price List Standards supersede this visual aid.

Note: This plan is the sole & exclusive property of Arthur Rutenberg Homes, Inc. The reproduction, use, or modification of this plan, for any purpose other than building with Arthur Rutenberg or its authorized franchises, is strictly prohibited.

Note: Plan information is conceptual only. Certain items may be changed at production stage.

Franchise: #61 Marcus Allen Homes, Inc.
File #: Lot 10 - Pelican Reef V
Drawn By: DRA
Date: July 28, 2020

A Custom Residence for:
The Wilson Family

AR HOMES™
BY ARTHUR RUTENBERG

The Tidewater 1611F

Plan #: 1611F-2S-1F-02

Elevation : 'B'

Plan #1611F - Elev 'B'

1st - Living	3,307 S.F.
2nd - Living	1,520 S.F.
Lanai	452 S.F.
Entry	173 S.F.
Garage 1	469 S.F.
Garage 2	386 S.F.
Balcony	223 S.F.
Unfin. Flex Space	275 S.F.
Total	6,805 S.F.

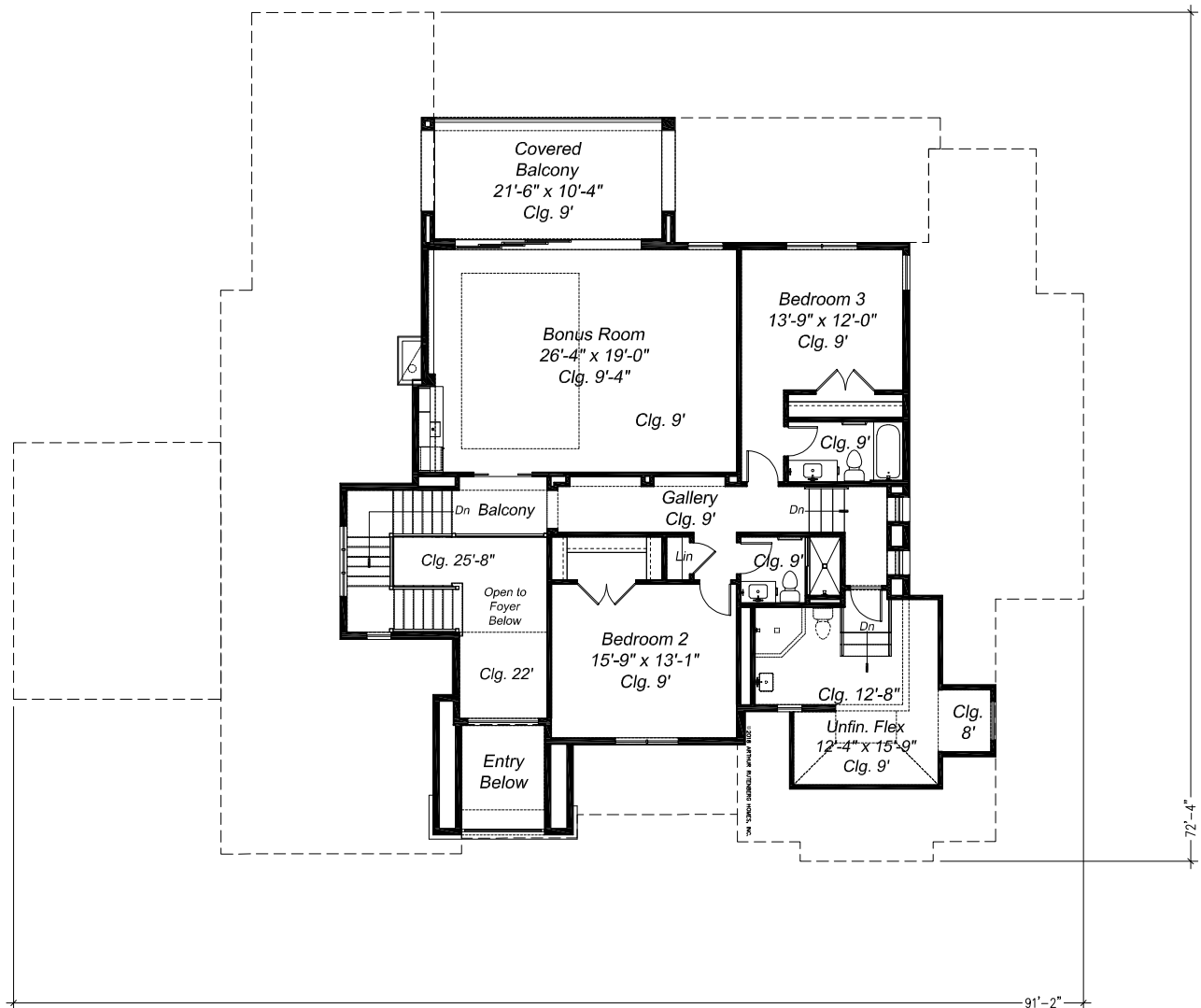
Buyer

Date

Buyer

Date

If Buyer elects to make structural changes to the standard plans, a Personalized Floor Plan (PPF) and price must be approved by Buyer and Builder at the time of Building Agreement. Structural changes include, but are not limited to, roof line changes, elevation changes, plate height changes, window/door changes, ceiling recess changes, wall changes and/or other changes as may be determined by the Builder.



MEASUREMENT IN FEET



This drawing is intended as a visual aid only. Construction drawings and Price List Standards supersede this visual aid.

Note: This plan is the sole & exclusive property of Arthur Rutenberg Homes, Inc. The reproduction, use, or modification of this plan, for any purpose other than building with Arthur Rutenberg or its authorized franchises, is strictly prohibited.

Note: Plan information is conceptual only. Certain items may be changed at production stage.

Franchise: #61 Marcus Allen Homes, Inc.
File #: Lot 10 - Pelican Reef V
Drawn By: DRA
Date: July 28, 2020

A Custom Residence for:
The Wilson Family

AR HOMES™
BY ARTHUR RUTENBERG