



Ayman Kamal  
Broker / Owner / Realtor®  
Tel (904) 955-4790  
ayman@amknetwork.com

**Pablo Creek Reserve  
Exquisite Custom Estate  
Waterfront with Southern Exposure**

**5 Bedrooms, 5 Baths, Bonus Room, 4,258 sf+/-  
.35 Acre Lot, 3-Car Garage, Lake Views  
Elegant Pool and Outdoor Oasis**

**5215 Bentpine Cove Rd, Jacksonville, FL 32224**

**[www.amknetwork.com](http://www.amknetwork.com)**



AMK Network Realty | Tel (904) 955-4790  
[www.amknetwork.com](http://www.amknetwork.com)



LICENSE # CGC059348

**J.A. LONG**  
DESIGN BUILDERS INC.

**LOT 269**  
PABLO CREEK RESERVE

Original Builder Floor  
Plan Prior to Building the  
Pool



**AREA TABULATION**

1ST FLR. LVNG.	2648 S.F.
2ND FLR. LVNG.	1474 S.F.
TOTAL HTD/CLD.	4122 S.F.
3 CAR GARAGE	892 S.F.
POOL STORAGE	21 S.F.
MECHANICAL	64 S.F.
CVRD ENTRY	121 S.F.
CVRD LANAI	164 S.F.
SUMMER KITCHEN	305 S.F.
CVRD BALCONY #1	67 S.F.
CVRD BALCONY #2	161 S.F.
TOTAL UNHEATED	1795 S.F.
TOTAL SQR. FTG.	5917 S.F.

**3 CAR GARAGE**  
22<sup>0</sup> x 39<sup>6</sup>  
(9'CLG)

Copyright JA Long 2015

70'-0" x 102'-0"

**FIRST FLOOR**

L I C E N S E # C G C 0 5 9 3 4 8

**J.A. LONG**  
DESIGN BUILDERS INC.

LOT 269  
PABLO CREEK RESERVE

Original Builder Floor  
Plan Prior to Building the  
Pool



**CVRD BALCONY**  
(9' CLG)

**MEDIA/  
GAME RM.**  
18<sup>5</sup> x 15<sup>8</sup>  
(9' CLG)

BTH #4 WIC

**SUITE #4**  
14<sup>2</sup> x 12<sup>4</sup>  
(9' CLG)

WIC BTH #3

**SUITE #3**  
14<sup>2</sup> x 12<sup>4</sup>  
(9' CLG)

MECH

**2 STORY  
GREAT  
ROOM**

WIC

BTH #5

**SUITE #5**  
13<sup>6</sup> x 13<sup>6</sup>  
(9' CLG)

**LOFT**  
10<sup>6</sup> x 9<sup>0</sup>  
(9' CLG)

BALCONY

**AREA TABULATION**

1ST FLR. LVNG.	2648 S.F.
2ND FLR. LVNG.	1474 S.F.
TOTAL HTD/CLD.	4122 S.F.
3 CAR GARAGE	892 S.F.
POOL STORAGE	21 S.F.
MECHANICAL	64 S.F.
CVRD ENTRY	121 S.F.
CVRD LANAI	164 S.F.
SUMMER KITCHEN	305 S.F.
CVRD BALCONY #1	67 S.F.
CVRD BALCONY #2	161 S.F.
TOTAL UNHEATED	1795 S.F.
TOTAL SQR. FTG.	5917 S.F.

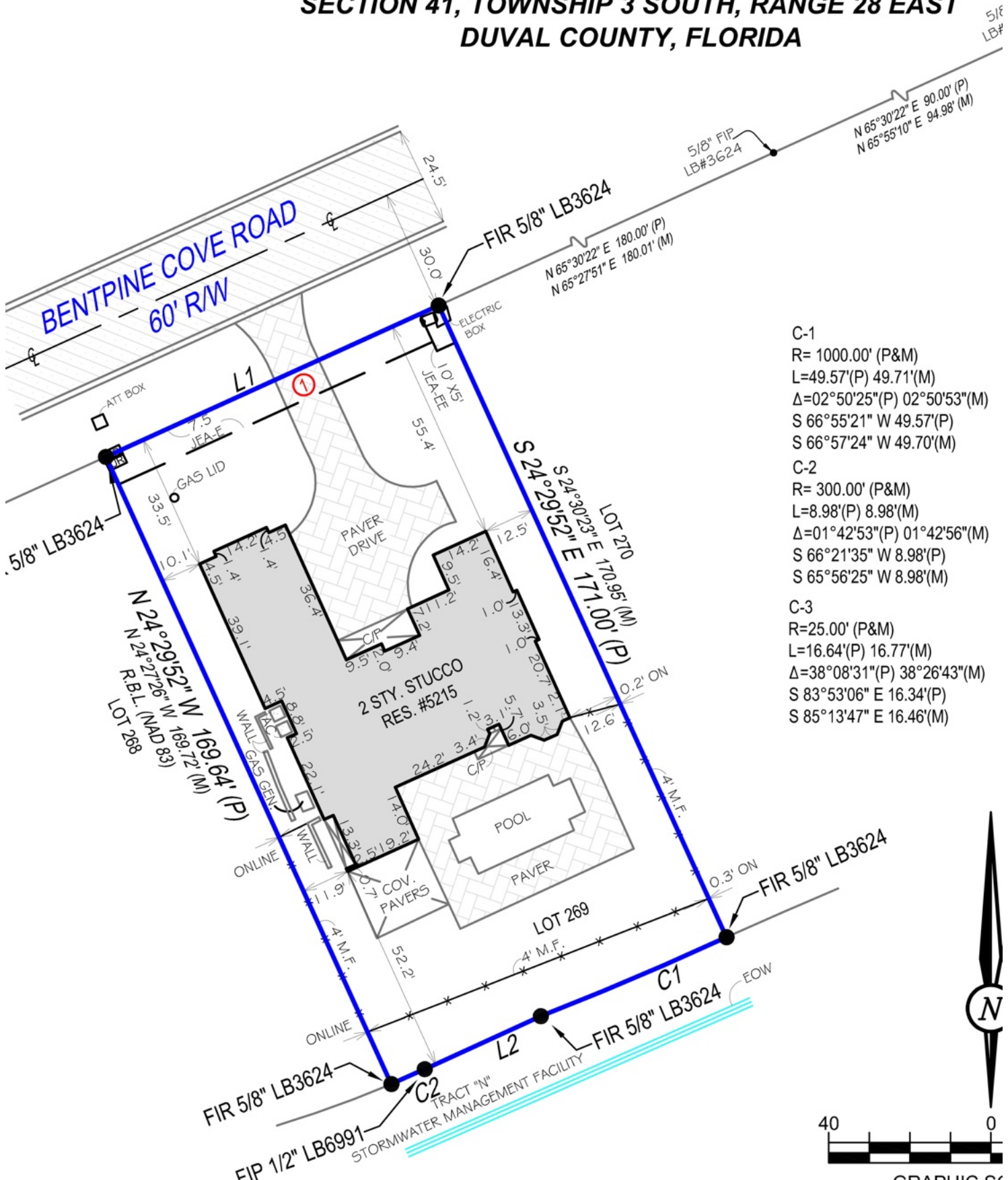
70'-0" x 102'-0"

**SECOND FLOOR**

Copyright JA Long 2015



# BOUNDARY SURVEY OF LANDS IN: SECTION 41, TOWNSHIP 3 SOUTH, RANGE 28 EAST DUVAL COUNTY, FLORIDA



- C-1  
 R= 1000.00' (P&M)  
 L=49.57'(P) 49.71'(M)  
 Δ=02°50'25"(P) 02°50'53"(M)  
 S 66°55'21" W 49.57'(P)  
 S 66°57'24" W 49.70'(M)
- C-2  
 R= 300.00' (P&M)  
 L=8.98'(P) 8.98'(M)  
 Δ=01°42'53"(P) 01°42'56"(M)  
 S 66°21'35" W 8.98'(P)  
 S 65°56'25" W 8.98'(M)
- C-3  
 R=25.00' (P&M)  
 L=16.64'(P) 16.77'(M)  
 Δ=38°08'31"(P) 38°26'43"(M)  
 S 83°53'06" E 16.34'(P)  
 S 85°13'47" E 16.46'(M)



GRAPHIC SCALE  
 1 inch =

**Y ADDRESS:** 5215 BENTPINE COVE ROAD. JACKSONVILLE. FL 32224

# Pablo Creek Reserve

Exquisite Custom Estate  
Waterfront with Southern Exposure

5 Bedrooms, 5 Baths, Bonus Room, 4,258 sf +/-  
.35 Acre Lot, 3-Car Garage, Lake Views  
Elegant Pool and Outdoor Oasis  
5215 Bentpine Cove Rd, Jacksonville, FL 32224

Welcome to your custom-built estate home in Pablo Creek Reserve. It is a luxurious and spacious residence that offers the ultimate in opulence and comfort. Set amidst the picturesque landscape of the lakes and walking paths, this home boasts an elegant and timeless design that seamlessly blends contemporary Mediterranean, and traditional elements. The home is situated on a large .35-acre waterfront lot and features a large driveway with room to park an additional car without blocking the 3-car garage.

The formal living room is the perfect space for entertaining guests, with its two-story high ceilings, and large sliders that offer breathtaking views of the pool and long lake views. The outdoor setting is equally impressive, with a serene covered lanai with a fireplace and a summer kitchen making it an ideal gathering space.

The gourmet kitchen is a chef's dream, with its state-of-the-art Thermador appliances, solid-surface countertops, and custom cabinetry. The kitchen opens to the dining room with sliders to the outdoor covered patio making it the perfect place for indoor/outdoor entertaining. The home also features a downstairs 5th bedroom or can be used as an elegant home office, and a large bonus upstairs, providing plenty of space for work and entertainment.

The luxurious primary suite is a true retreat with large windows that offer tranquil views of the long lake views. The primary bath offers a stand-alone tub, dual-entry shower, and a spacious custom walking-in closet. The home also features a large guest suite with an ensuite bath upstairs.

The outdoor living spaces are just as impressive as the indoor spaces. The home features a large, covered lanai with a summer kitchen, a fireplace making it the perfect place for outdoor entertaining.

With its luxurious amenities, elegant design, and breathtaking views, this custom-built estate home in Pablo Creek Reserve is the ultimate in luxury living. It is a perfect blend of comfort and elegance, making it the ideal place to call home.

## Features:

- Spectacular long-lake views with southern exposure
- Custom built in 2015 by JA Long
- Pebble finish salt-water electric-heated pool with large deck
- 4,258 sf heated, over 5,900 sf total square footage (see floor plan)
- 5 Bedrooms or 4 bedrooms and an Office and large Bonus Room
- 3-Car garage with custom built in storage and cabinets
- Large Balcony off Bonus Room great for entertaining
- Front balcony allowing superior natural light penetration
- Fully fenced-in with outdoor pool storage area
- Generac whole-house back-up generator
- Thermador Appliances
- Engineered wood floors throughout downstairs
- Outdoor fireplace, summer kitchen, and covered patio
- Custom walk-in closets
- Serene landscape lighting throughout

## Pablo Creek Reserve Location & Amenities



- Gated Community, with 24/7 security guards
- World class luxury community with large estate lots
- Homes from 3,000 sf to 7,000+ sf
- Community Park with covered picnic area great for hosting big parties
- Magnificent community landscape with natural lakes and walking trails
- Central location access 2 minutes from J. Turner Butler Blvd (SR202)
- A few miles to Ponte Vedra and Jacksonville Beaches
- 5 minutes to Mayo Clinic, less than 10 minutes to St. Johns Town Center, shopping, dining, and all activities
- 10 Minutes to JTB / I-295 Junction and St. Johns Town Center
- 10 to 12 minutes to JTB / I-95 Junction
- \$1,536 per quarter homeowners' association fee



## Pablo Creek Reserve

Nestled in the heart of Jacksonville, Pablo Creek Reserve is a prestigious gated community offering a serene and luxurious lifestyle. This exclusive neighborhood is renowned for its lush landscaping, pristine lakes, and scenic walking trails, creating a tranquil retreat for residents.

Pablo Creek Reserve is conveniently located just minutes from Jacksonville's finest amenities, including top-rated schools, world-class healthcare facilities, and vibrant shopping and dining options. Beach lovers will appreciate the short drive to the stunning beaches of the Atlantic Coast, while outdoor enthusiasts can explore nearby parks and golf courses.

Designed with community and privacy in mind, Pablo Creek Reserve offers expansive home sites and elegant custom homes, all within a secure and welcoming environment. Whether you're seeking an active lifestyle or peaceful relaxation, Pablo Creek Reserve provides the perfect balance of convenience and luxury living.





