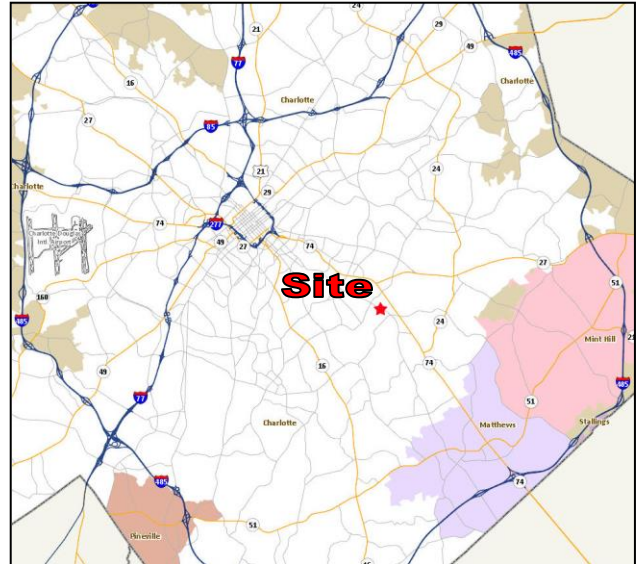


# Monroe Rd at Glendora



## Highlights:

- Build to Suit
- Signage
- Proposed Space: 525 – 9,000 SF
- Key Man Suites starting at 110SF
- Fantastic In-town Location! Minutes from Uptown, Southpark, Matthews
- Access from Monroe Rd and connection to Independence Blvd
- 27,000 VPD on Monroe Rd (2016)



3015 Robin Rd  
Charlotte, NC 28211

*For more information, call:*

**Henry Blanton**  
Broker/Realtor

Office: 704-644-2936

Mobile: 704-763-2051

Email: [henry@takeflightproperties.com](mailto:henry@takeflightproperties.com)



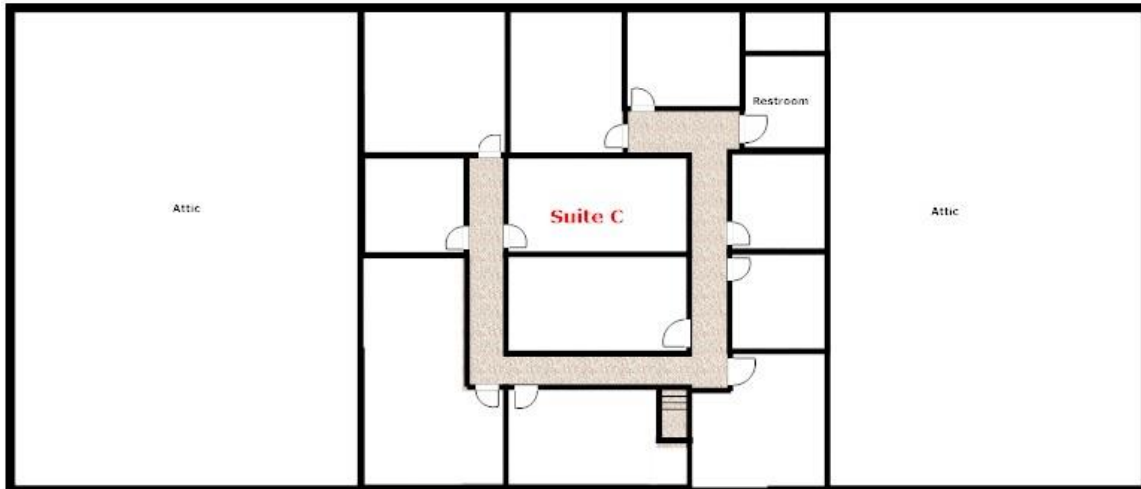
*Information Deemed Reliable But Not Guaranteed*

---

# 10114 East WT Harris Blvd

---

2nd Floor



1st Floor



- Suite A - 1000SF
- Suite B - 680SF
- Suite C - 5280SF
- Suite D - 525SF
- Suite E - 1000SF