

GET THE MOST OUT OF YOUR GENERATOR

PROTECT YOUR HOME WITH REMOTE MONITORING



WHAT IS GENERATOR MONITORING?

Remote Generator Monitoring is like having a generator technician available 24/7, ensuring your generator will do its job when needed!

WHY SHOULD YOU MONITOR YOUR GENERATOR?

You've invested in a generator to ensure your family has power during an outage. Monitoring your generator ensures that your system is performing as expected. In the event of a problem, we are able to respond quickly to get your generator back in proper operating condition. Some of the key benefits you receive from implementing this level of service are:



Improved Reliability

The definition of reliability in our business is simply this...The power goes out and the emergency power system works. Monitoring the system 24/7 tracks the current status of the emergency power system, monitors the exercise cycles and provides instant alerts to problems.



Confidence and Peace of Mind

Know with confidence the system is ready for the next power outage and will work when needed.



Fast, Proactive Service Response

By receiving alarm notifications via email and/or text, our system will alert you and our dispatch team to any generator fault conditions allowing us to respond more quickly to your needs and to minimize down time. Alerts are sent to as many people as you like.



Reporting

Monitored events are time & date stamped and can provide daily, weekly and/or monthly automated activity reports, sent directly to you via email.



User Portal

You receive your very own user log in to monitor and track your equipment at any time. We will take care of the monitoring and reporting for you and you will have complete access to monitor and track your equipment and data.



Decreased Cost of Ownership

Monitoring a generator actually helps decrease the overall cost of ownership. This may seem contradictory. However, small problems can be fixed before they become big problems, thereby reducing major repair costs. The most significant cost is if the generator does not work during a power outage!

PEACE OF MIND FOR YOUR HOME & FAMILY



HOW IT WORKS

Generator remote monitoring includes two basic components, the monitoring hardware connected to your equipment and the monitoring service with cloud-based user portal.



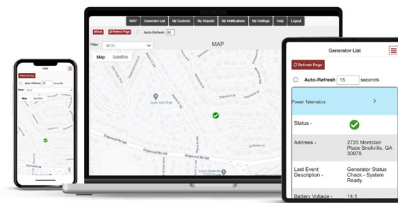
Monitoring Equipment

We install an electronic monitoring system that connects directly to your generator to track key activities and events including run times, missed exercises, and fault events that may keep your generator from operating during an outage. Some of the key features include:

A variety of device solutions and accessory kits.

Ultra-secure and reliable cellular connectivity that transports the data to our platform.

Lifetime warranty of the monitoring equipment!



Power Link Software

Our monitoring platform provides you and our service support team with instant access to the status of your equipment as well as alert notifications via email, text notifications via email and/or text. Some of the other key features include:

Web-based software accessible anywhere on any mobile device or desktop computer.

Real time status including mapping and historical event logging.

Standard and custom reports.

AFFORDABLE GENERATOR MONITORING

Your emergency power system is critical to the security and safety of your family. With advancements in technology, our generator monitoring system is very affordable and an easy decision to add this service to your maintenance plan.



**912-571-5855 | service@energyelite.net
energyelite.net**

4268 Loves Chapel Road, Glennville, GA 30427

Our goal is to always provide you with the highest level of service possible and to do everything that we can to improve the reliability of your emergency power system.