

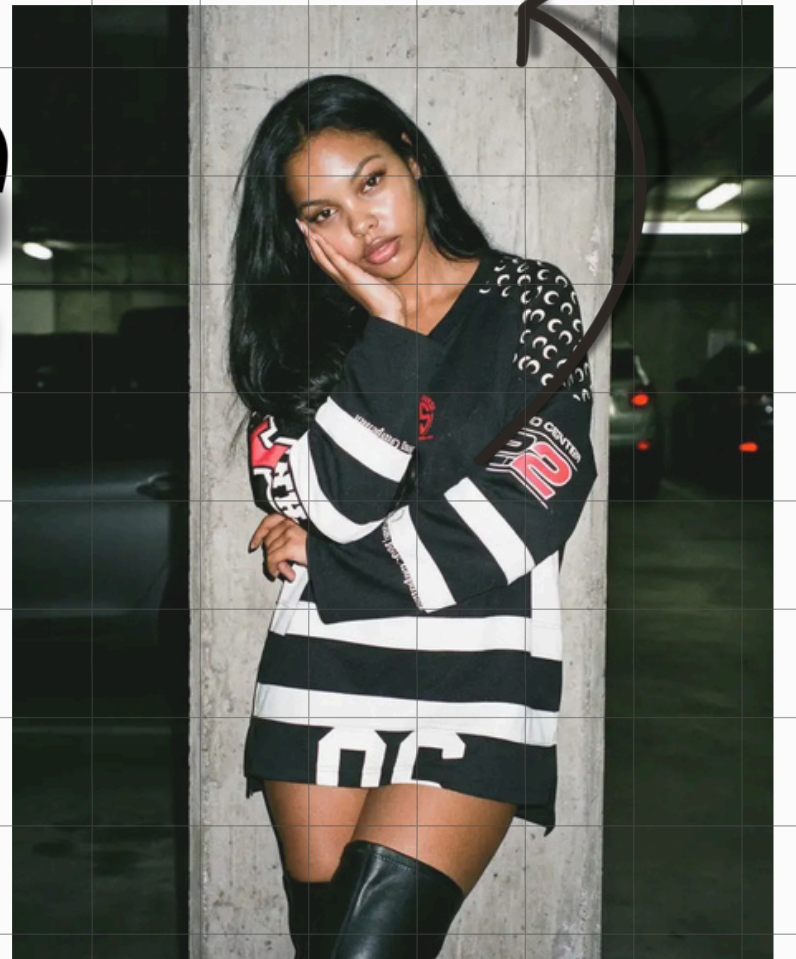
NANO BANANA PROMPTS

WHO DOES IT BETTER?



HIGGSFIELD

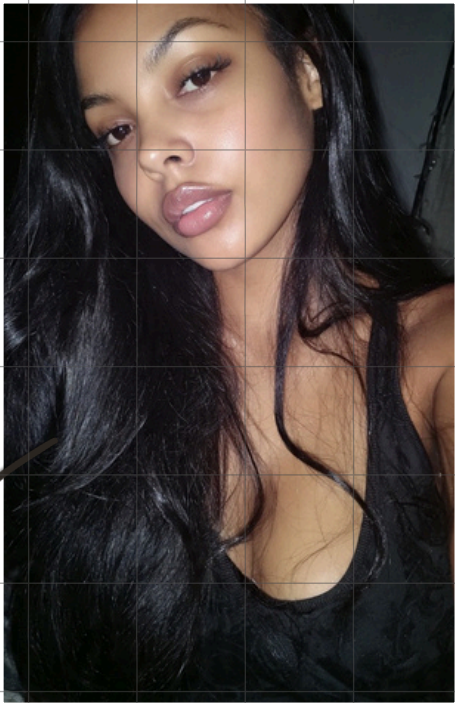
VS



GEMINI PRO

Influencer PROMPTS
a night out edition

GEMINI X NANO



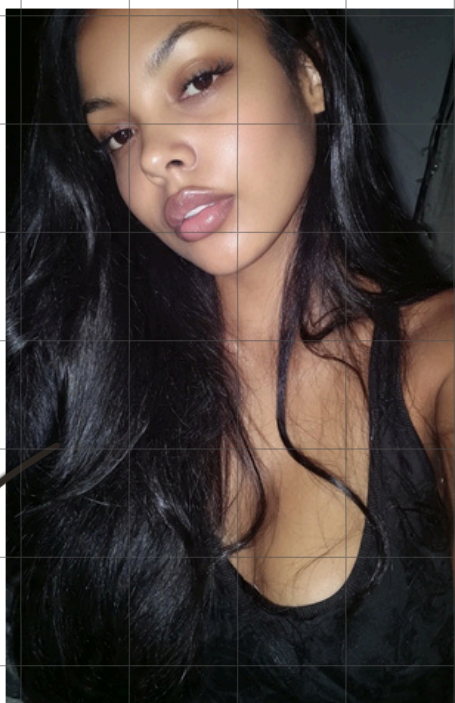
TRAINED IMAGE



GEMINI PRO

Using the subject in the uploaded image, wearing the same outfit shown in the uploaded image. The subject is leaning against a concrete pillar inside a dim underground parking garage at night. She is posed at a slight angle, one hand resting against her face and the other relaxed at her side. Direct on-camera flash illuminates her face and body, creating sharp highlights and deep shadows. Skin texture is realistic with visible pores and subtle natural glow. Facial features remain identical to the uploaded image. Hair remains unchanged from the uploaded image. The background is dark, industrial, and slightly blurred. Grainy 90s disposable camera aesthetic, candid flash photography, realistic lighting and shadows.

GEMINI X NANO



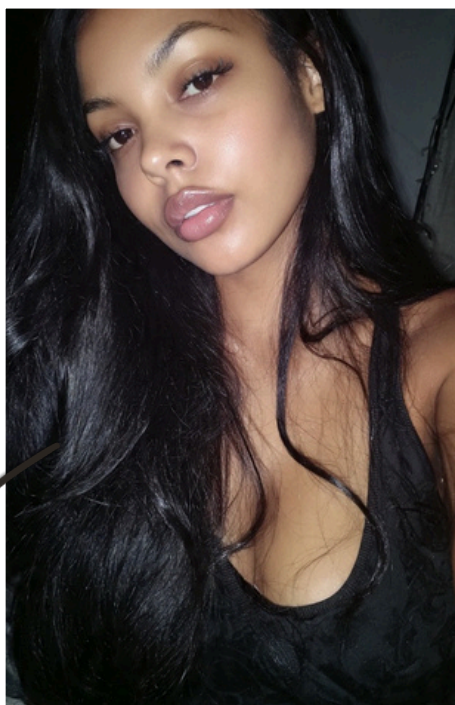
META.ai



GEMINI PRO

Using the subject in the uploaded image, wearing the same outfit shown in the uploaded image. The subject is seated sideways on the edge of a low bed in a modern bedroom, captured in a close-up perspective. One hand is lifted to her hair while the other rests gently along her jawline. She gazes directly into the camera with a calm, confident expression. Harsh direct flash brightens her skin while the room behind her remains dim. Skin appears flawless yet realistic with natural texture and glow. Facial structure and features remain unchanged. Hair remains unchanged from the uploaded image. Soft shadows, warm tones, subtle film grain, nostalgic 90s flash aesthetic.

GEMINI X NANO



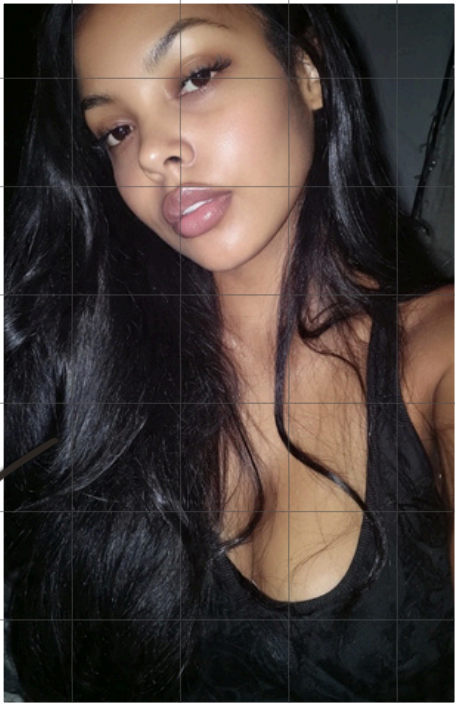
META.ai



GEMINI PRO

Using the subject in the uploaded image, wearing the same outfit shown in the uploaded image. The subject is reclining slightly against a kitchen counter in a modern apartment at night. One elbow rests on the counter while her hand touches the side of her face. She looks directly at the camera with a playful, self-assured expression. Bright on-camera flash highlights her cheekbones, lips, and skin texture, with visible pores and realistic sheen. Facial features are not altered. Hair remains unchanged from the uploaded image. The kitchen background fades into darkness with minimal detail. Grainy late-90s candid photography style.

GEMINI X NANO



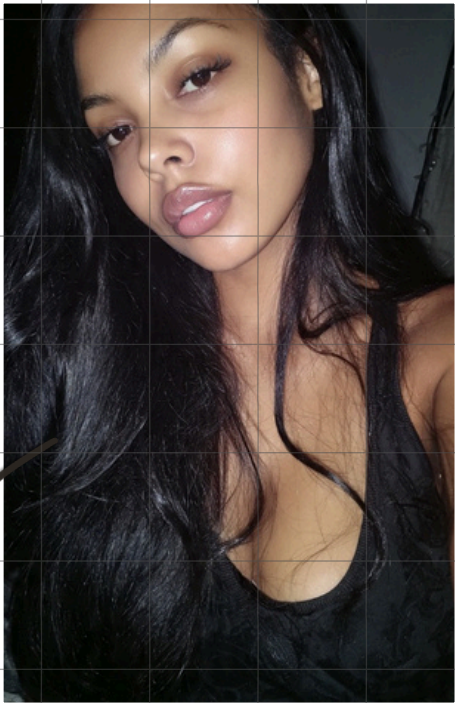
META.ai



GEMINI PRO

Using the subject in the uploaded image, wearing the same outfit shown in the uploaded image. The subject is stretched diagonally across a cushioned window seat inside a high-rise apartment at night. One hand supports her head while the other rests near her face. She gazes directly into the camera with a relaxed, confident look. Direct flash lights her face and body while city lights outside the window remain dim and blurred. Skin texture is realistic and luminous. Facial features stay identical to the uploaded image. Hair remains unchanged from the uploaded image. Heavy grain, flash bloom, intimate 90s editorial vibe.

GEMINI X NANO



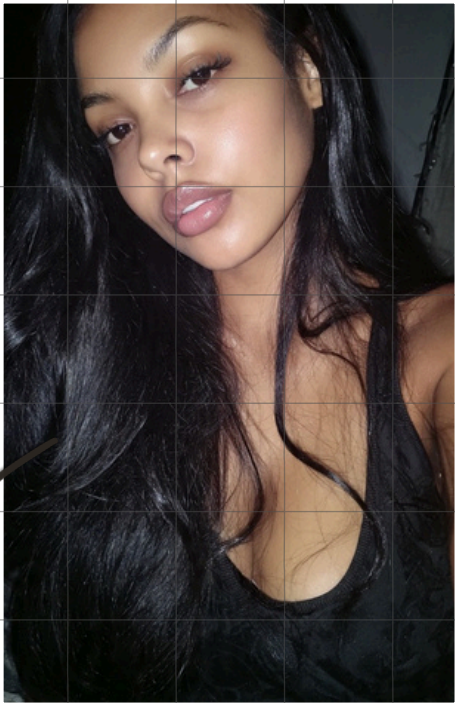
META.ai



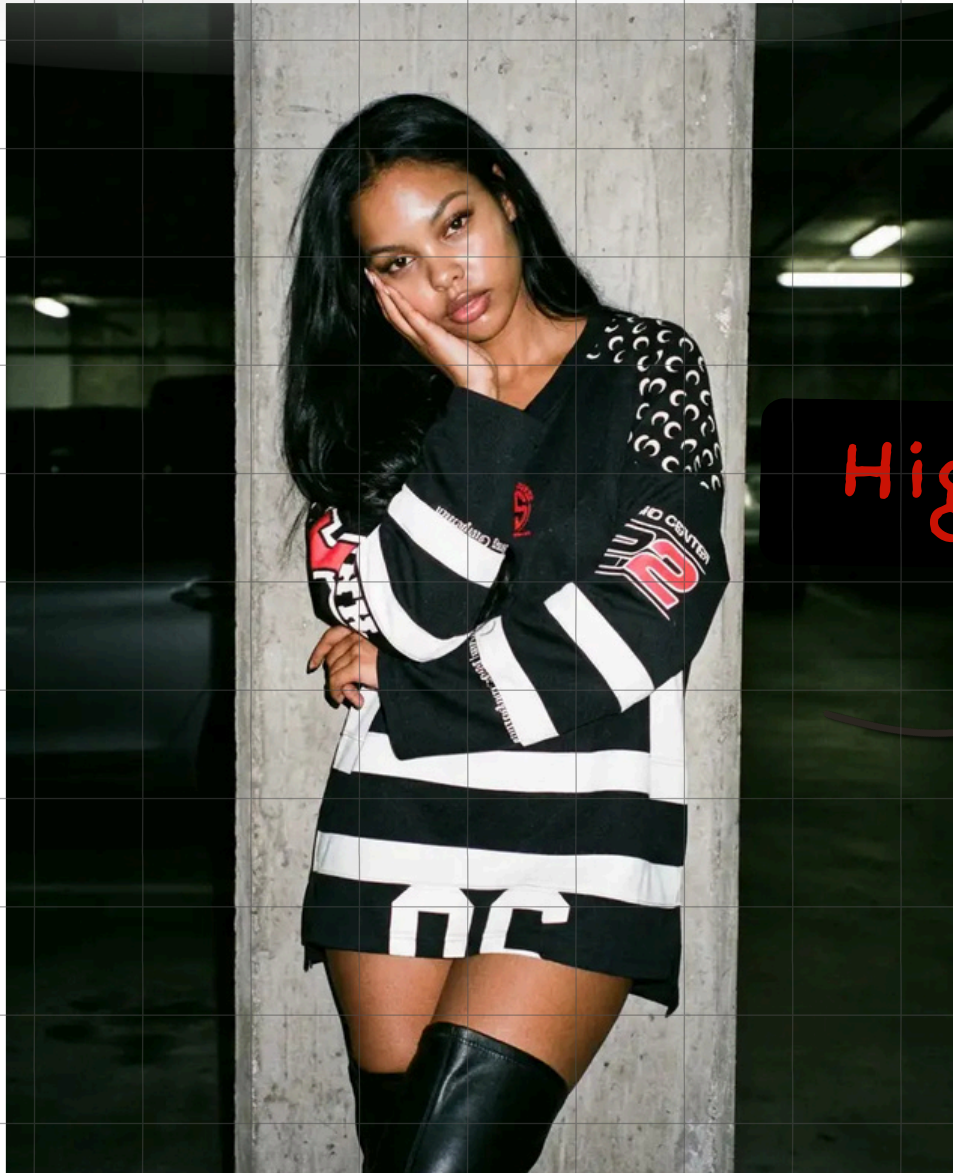
GEMINI PRO

Using the subject in the uploaded image, wearing the same outfit shown in the uploaded image. The subject is lounging lengthwise across a deep couch in a cozy modern living room. Her head is tilted slightly, one hand resting on her face and the other positioned near her hair. She looks straight into the camera with a confident, slightly playful expression. Strong direct flash creates dramatic highlights on her skin with realistic texture and pores visible. Facial features remain unchanged. Hair remains unchanged from the uploaded image. Background is dark and soft-focused. Grainy disposable-camera look, authentic 90s flash photography.

Higgsfield X NANO



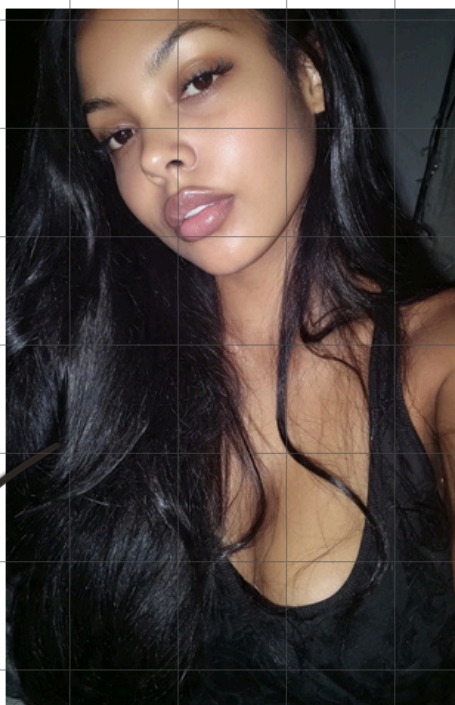
META.ai



Higgsfield

Using the subject in the uploaded image, wearing the same outfit shown in the uploaded image. The subject is leaning against a concrete pillar inside a dim underground parking garage at night. She is posed at a slight angle, one hand resting against her face and the other relaxed at her side. Direct on-camera flash illuminates her face and body, creating sharp highlights and deep shadows. Skin texture is realistic with visible pores and subtle natural glow. Facial features remain identical to the uploaded image. Hair remains unchanged from the uploaded image. The background is dark, industrial, and slightly blurred. Grainy 90s disposable camera aesthetic, candid flash photography, realistic lighting and shadows.

Higgsfield X NANO



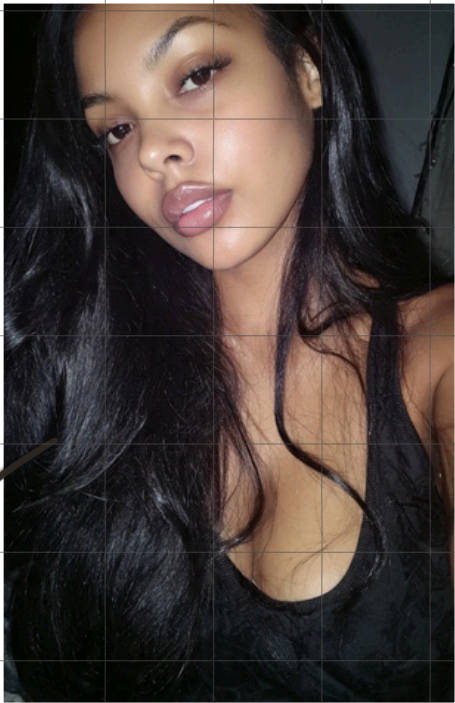
META.ai



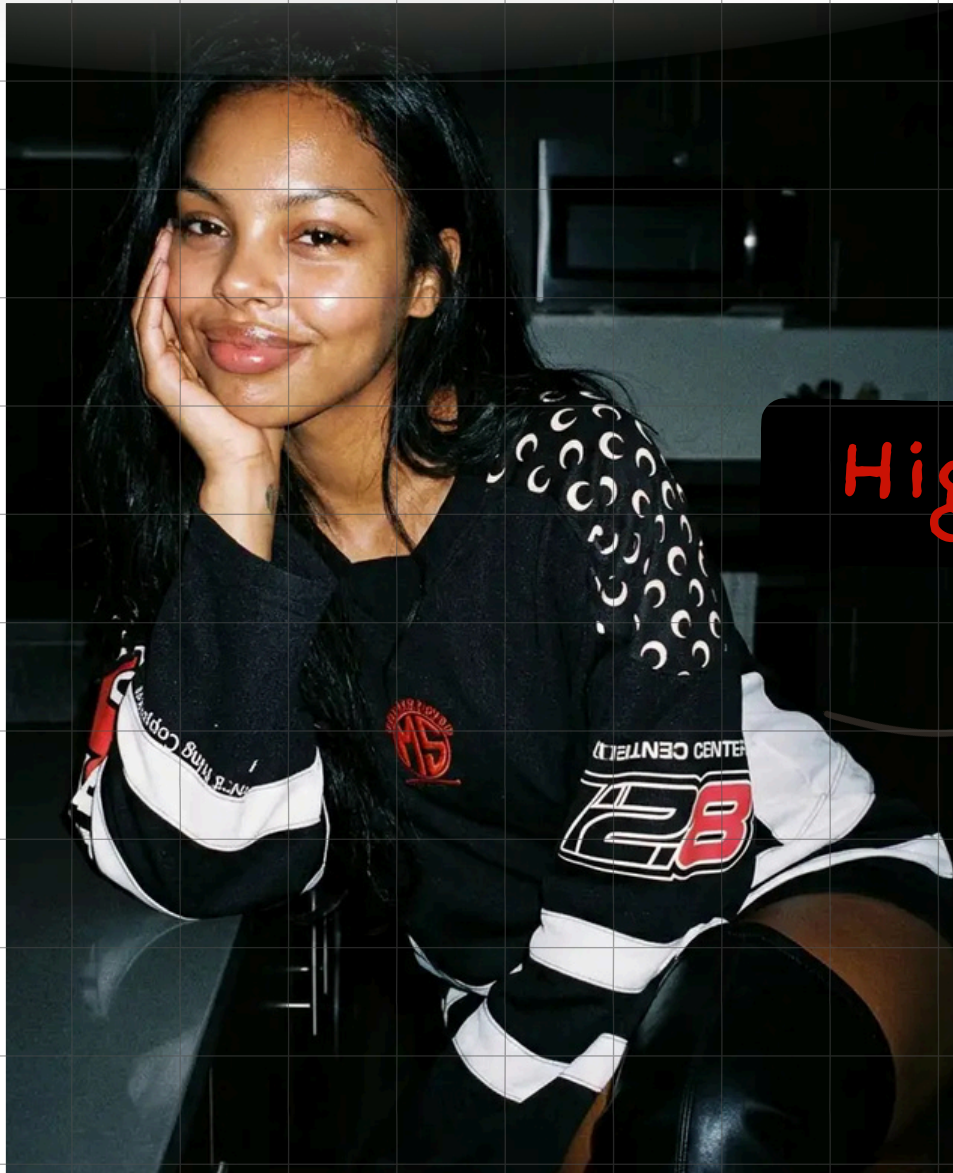
Higgsfield

Using the subject in the uploaded image, wearing the same outfit shown in the uploaded image. The subject is seated sideways on the edge of a low bed in a modern bedroom, captured in a close-up perspective. One hand is lifted to her hair while the other rests gently along her jawline. She gazes directly into the camera with a calm, confident expression. Harsh direct flash brightens her skin while the room behind her remains dim. Skin appears flawless yet realistic with natural texture and glow. Facial structure and features remain unchanged. Hair remains unchanged from the uploaded image. Soft shadows, warm tones, subtle film grain, nostalgic 90s flash aesthetic.

Higgsfield X NANO



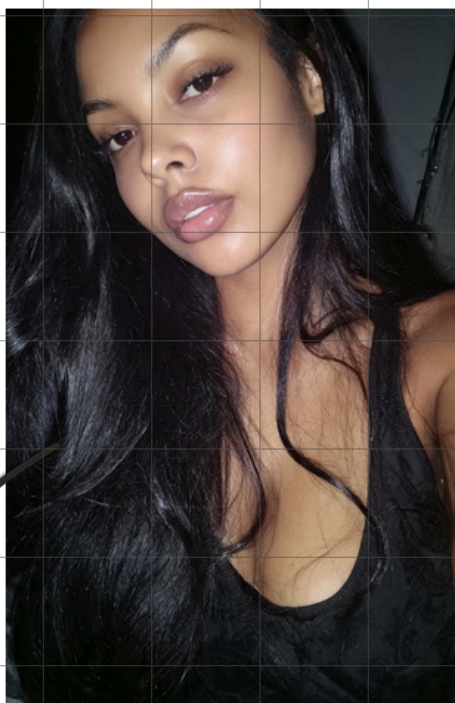
META.ai



Higgsfield

Using the subject in the uploaded image, wearing the same outfit shown in the uploaded image. The subject is reclining slightly against a kitchen counter in a modern apartment at night. One elbow rests on the counter while her hand touches the side of her face. She looks directly at the camera with a playful, self-assured expression. Bright on-camera flash highlights her cheekbones, lips, and skin texture, with visible pores and realistic sheen. Facial features are not altered. Hair remains unchanged from the uploaded image. The kitchen background fades into darkness with minimal detail. Grainy late-90s candid photography style.

Higgsfield X NANO



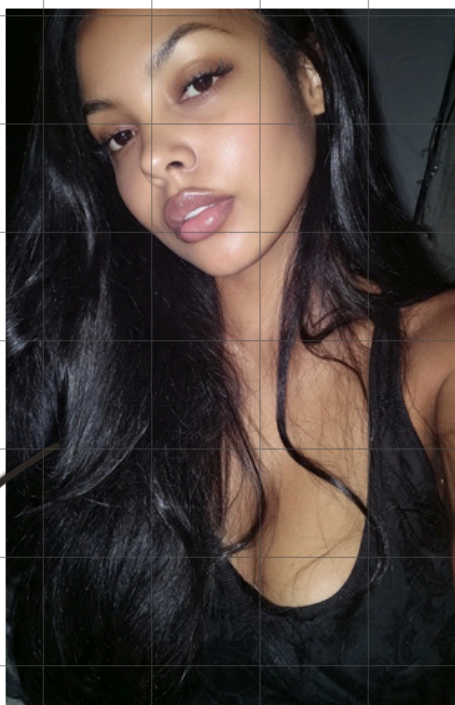
META.ai



Higgsfield

Using the subject in the uploaded image, wearing the same outfit shown in the uploaded image. The subject is stretched diagonally across a cushioned window seat inside a high-rise apartment at night. One hand supports her head while the other rests near her face. She gazes directly into the camera with a relaxed, confident look. Direct flash lights her face and body while city lights outside the window remain dim and blurred. Skin texture is realistic and luminous. Facial features stay identical to the uploaded image. Hair remains unchanged from the uploaded image. Heavy grain, flash bloom, intimate 90s editorial vibe.

Higgsfield X NANO



TRAINED IMAGE



Higgsfield

Using the subject in the uploaded image, wearing the same outfit shown in the uploaded image. The subject is lounging lengthwise across a deep couch in a cozy modern living room. Her head is tilted slightly, one hand resting on her face and the other positioned near her hair. She looks straight into the camera with a confident, slightly playful expression. Strong direct flash creates dramatic highlights on her skin with realistic texture and pores visible. Facial features remain unchanged. Hair remains unchanged from the uploaded image. Background is dark and soft-focused. Grainy disposable-camera look, authentic 90s flash photography.

P R O M P T L I K E Y U N G

/FOLLOW
FOR
MORE

• WWW.RICHOFFFPROMPTS.COM •

IG MYIGISYUNG

SUBSCRIBE



/HIGGSFIELD.AI

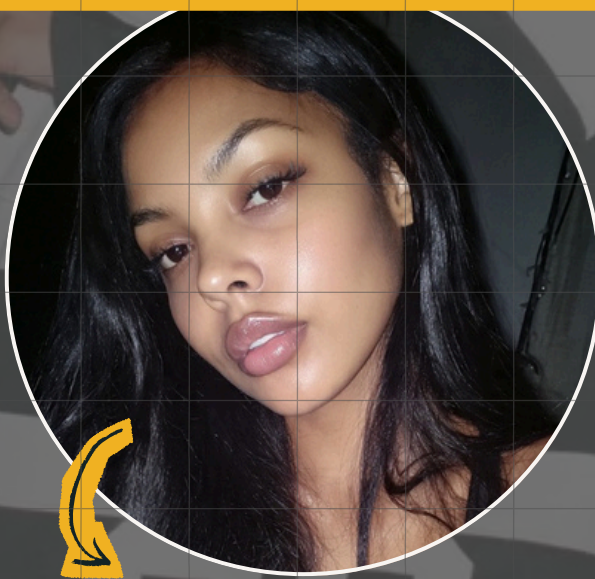
#PROMPTLIKEYUNG



TEXT TO PROMPT. HIGGINGSFIELD UNLIMITED NANO BANANA PROMPT



MARINE SERRE



META.AI



RICK OWENS

USING THE SUBJECT IN THE UPLOADED IMAGE, WEARING THE SAME OUTFIT SHOWN IN THE UPLOADED IMAGE. THE SUBJECT IS LEANING AGAINST A CONCRETE PILLAR INSIDE A DIM UNDERGROUND PARKING GARAGE AT NIGHT. SHE IS POSED AT A SLIGHT ANGLE, ONE HAND RESTING AGAINST HER FACE AND THE OTHER RELAXED AT HER SIDE. DIRECT ON-CAMERA FLASH ILLUMINATES HER FACE AND BODY, CREATING SHARP HIGHLIGHTS AND DEEP SHADOWS. SKIN TEXTURE IS REALISTIC WITH VISIBLE PORES AND SUBTLE NATURAL GLOW. FACIAL FEATURES REMAIN IDENTICAL TO THE UPLOADED IMAGE. HAIR REMAINS UNCHANGED FROM THE UPLOADED IMAGE. THE BACKGROUND IS DARK, INDUSTRIAL, AND SLIGHTLY BLURRED. GRAINY 90S DISPOSABLE CAMERA AESTHETIC, CANDID FLASH PHOTOGRAPHY, REALISTIC LIGHTING AND SHADOWS.

© MYIGISYUNG • WWW.RICHOFFPROMPTS.COM

/PROMPTLIKEYUNG

TEXT TO IMAGE PROMPT • GEMINI PRO • NANO BANANA

#RICHOFFPROMPTS

MADE IN META.AI

TRAINED AI INFLUENCER • PROMPT CREATED BY YUNG



MARINE SERRE

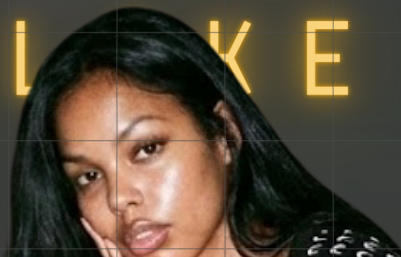


RICK OWENS LILIES

USING THE SUBJECT IN THE UPLOADED IMAGE, WEARING THE SAME OUTFIT SHOWN IN THE UPLOADED IMAGE. THE SUBJECT IS LOUNGING LENGTHWISE ACROSS A DEEP COUCH IN A COZY MODERN LIVING ROOM. HER HEAD IS TILTED SLIGHTLY, ONE HAND RESTING ON HER FACE AND THE OTHER POSITIONED NEAR HER HAIR. SHE LOOKS STRAIGHT INTO THE CAMERA WITH A CONFIDENT, SLIGHTLY PLAYFUL EXPRESSION. STRONG DIRECT FLASH CREATES DRAMATIC HIGHLIGHTS ON HER SKIN WITH REALISTIC TEXTURE AND PORES VISIBLE. FACIAL FEATURES REMAIN UNCHANGED. HAIR REMAINS UNCHANGED FROM THE UPLOADED IMAGE. BACKGROUND IS DARK AND SOFT-FOCUSED. GRAINY DISPOSABLE-CAMERA LOOK, AUTHENTIC 90S FLASH PHOTOGRAPHY.

MYIGISYUNG • WWW.RICHOFFPROMPTS.COM

P R O M P T L I K E Y U N G



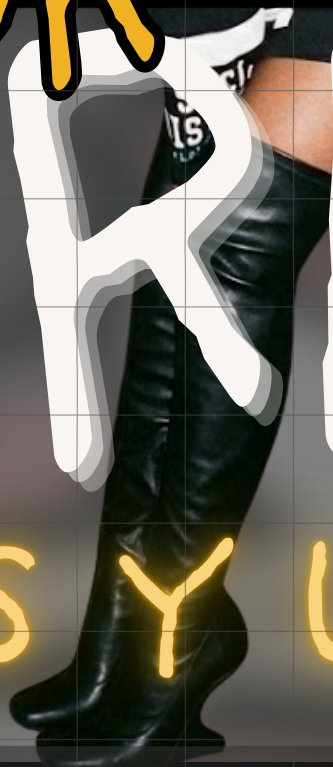
FOLLOW ME

FOR

NO MORE



M Y I G I S Y U N G



SUBSCRIBE

• W W W . R I C H O F F P R O M P T S . C O M •