



# Steps to Training Images USING AI



TO...THAT'S IT!



FROM THIS,

+1 bonus influencer prompt

## Dataset to Avatar



# STEP ONE



## Gather Training Images

Collect 22-35 total images.  
You may use real photos and clean AI images together.

Image requirements:

- Minimum 1 MP
- Clear, sharp focus
- Multiple angles
- No blur, watermarks, or distortion

### TIP ONE

When creating initial images for a dataset, focus on clarity over aesthetics. Use clean, high-resolution images with natural lighting and neutral backgrounds, and avoid filters, blur, or heavy editing so the AI can learn accurate details.

### TIP TWO

Include natural variety by capturing multiple angles, slight expression changes, and different framing distances. This helps the AI understand the subject from different perspectives while keeping the identity consistent.

IMAGES

# STEP TWO

TRAINING IMAGES



+ New Creation from Style

DATA SET

Recommended Image Ratio

Best mix:

- 60-70% real images
- 30-40% AI images

Example dataset:

- 18 real identity images
- 10 AI style / scenario images
- = 28 total images

## Create the Data Sheet

Place all images into one dataset.  
Ensure the images feel consistent  
and intentional.

Optional:

Include style or aesthetic images if  
you want the AI to learn a specific  
look.

Skip this if identity accuracy is  
your only goal.

## TIP ONE

Be Intentional

Only include images that support  
the result you want. Keep  
quality, lighting, and overall  
look consistent to avoid  
confusing the model.

## TIP TWO

Balance Variety

Include enough variation for  
flexibility, but not so much that  
the subject looks like different  
people. Consistency keeps the AI  
accurate.



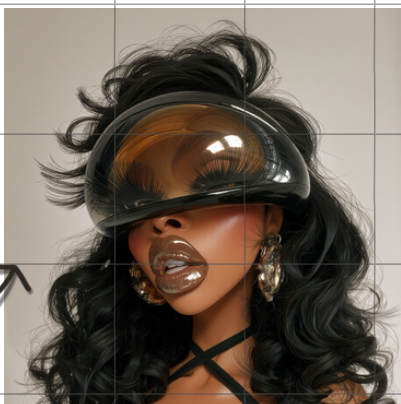
# STEP THREE

PROMPT



CREATED IN META AI

TRAINED  
IMAGE



## Train & Prompt

Upload the dataset and train the model using the generator of your choice.

Use prompts to define the final look, mood, and scenario. The AI now generates a consistent avatar based on your data.

## TIP ONE

Prompt With Purpose

Be clear and specific when prompting. Describe the identity, mood, and setting you want without changing core features. Simple, focused prompts produce more consistent results.

## TIP TWO

Refine, Don't Restart

If results are off, adjust your prompt before changing the dataset. Small prompt tweaks often fix issues without retraining the images.



# Trained Images

