

NANO BANANA PROMPTS

WHO DOES IT BETTER?

HIGGSFIELD



GEMINI PRO



EDITOR PROMPTS

photoshop edition

GEMINI X NANO



TRAINED IMAGE



GEMINI PRO

A surreal digital art scene of use the subject in the uploaded image standing in front of a giant floating Photoshop workspace window. The subject is confidently adjusting her tie while a large semi-transparent duplicated version of her silhouette fades into the backdrop. Include UI elements like selection outlines, rulers, layer panels, and transform controls. Deep red monochrome atmosphere, soft cinematic lighting, subtle depth blur. The mood is confident, clever, and self-aware like she is editing her own reality. Shot on a Canon EOS R5 at f/2.0 for creamy depth.

Higgsfield X NANO



TRAINED IMAGE



Higgsfield

A surreal digital art scene of use the subject in the uploaded image standing in front of a giant floating Photoshop workspace window. The subject is confidently adjusting her tie while a large semi-transparent duplicated version of her silhouette fades into the backdrop. Include UI elements like selection outlines, rulers, layer panels, and transform controls. Deep red monochrome atmosphere, soft cinematic lighting, subtle depth blur. The mood is confident, clever, and self-aware like she is editing her own reality. Shot on a Canon EOS R5 at f/2.0 for creamy depth.

GEMINI X NANO



TRAINED IMAGE



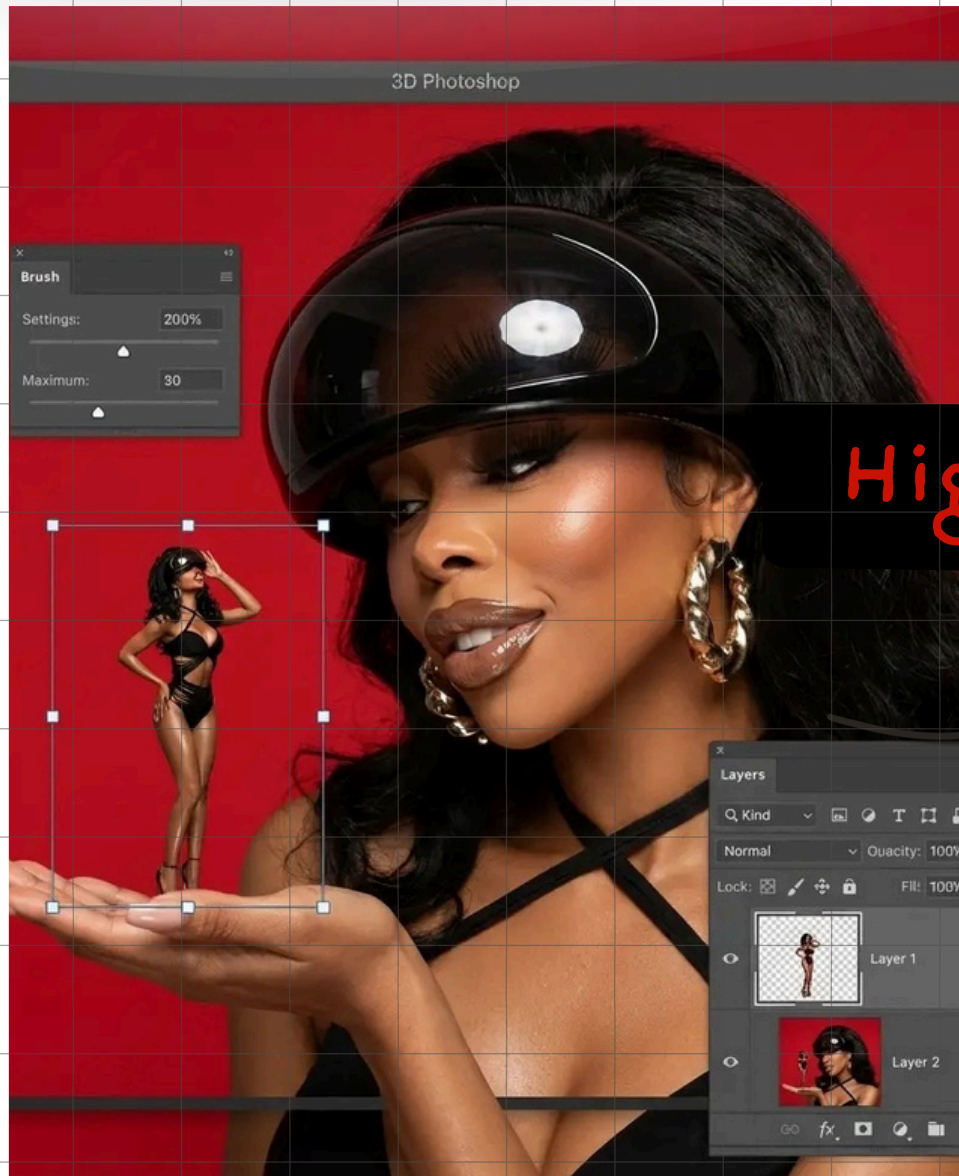
GEMINI PRO

A creative photo illusion of use the subject in the uploaded image sitting tiny in her own hand like a miniature version of herself. The scene is set inside a digital workspace that looks like a Photoshop interface floating in 3D space. Crisp red backdrop, clean studio lighting. The main subject appears life-sized looking down and smirking at the small version of herself standing in her palm. Include visible editing tools, resizing boxes, brush tool settings, and layer thumbnails. Shot with an 85mm lens, sharp focus on both subjects, soft shadow under tiny subject for realism. High-fashion editorial clarity with smooth melanin texture and glossy highlights on skin.

Higgsfield X NANO



TRAINED IMAGE



Higgsfield

A creative photo illusion of use the subject in the uploaded image sitting tiny in her own hand like a miniature version of herself. The scene is set inside a digital workspace that looks like a Photoshop interface floating in 3D space. Crisp red backdrop, clean studio lighting. The main subject appears life-sized looking down and smirking at the small version of herself standing in her palm. Include visible editing tools, resizing boxes, brush tool settings, and layer thumbnails. Shot with an 85mm lens, sharp focus on both subjects, soft shadow under tiny subject for realism. High-fashion editorial clarity with smooth melanin texture and glossy highlights on skin.

GEMINI X NANO



TRAINED IMAGE



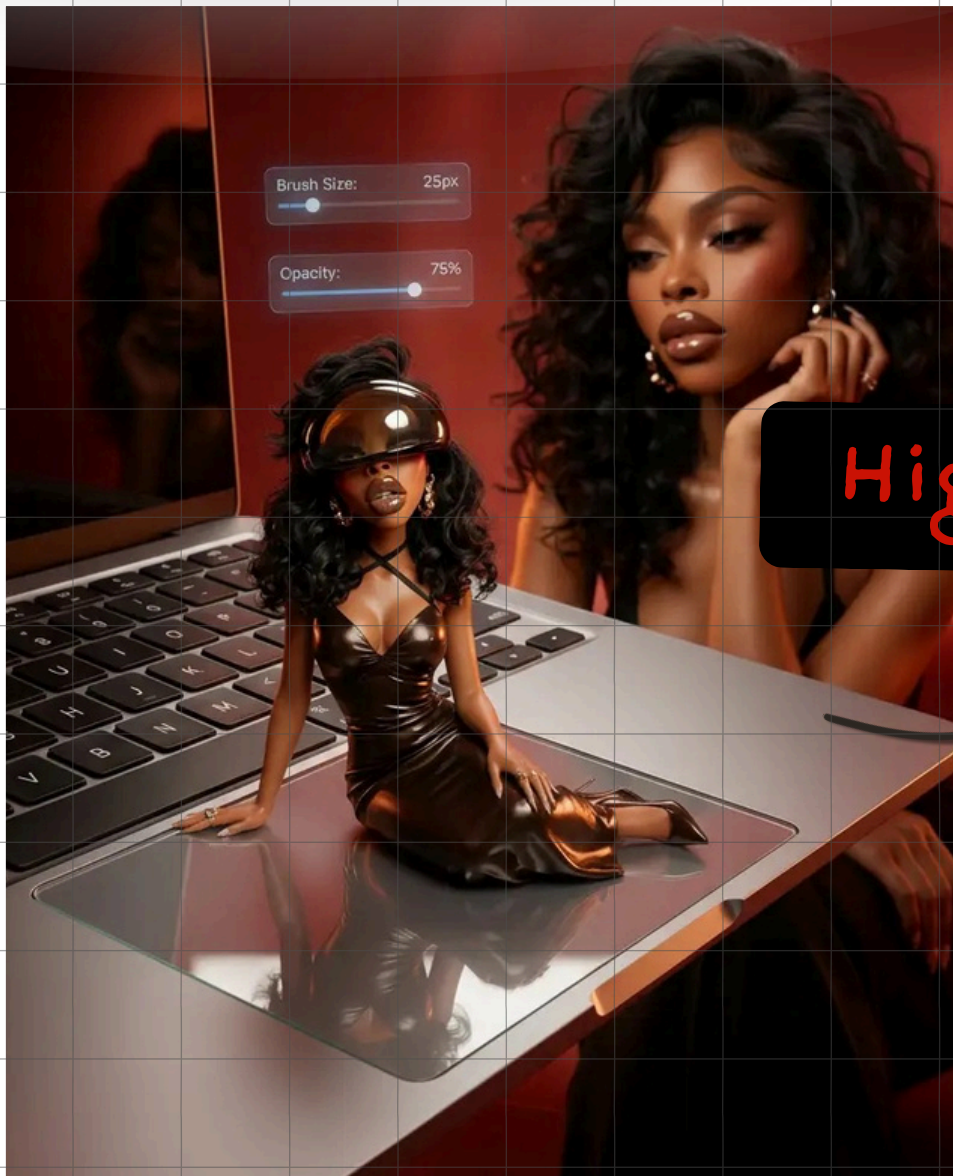
GEMINI PRO

A hyperreal editorial portrait where use the subject in the uploaded image is sitting on top of a floating MacBook trackpad as if she is a tiny model posing during a photoshoot. The MacBook is angled stylishly with reflections visible. The main full-sized subject appears behind the laptop in elegant pose, watching the tiny version like an art director. Include brush size and opacity HUD elements floating around for creative context. Warm studio-grade lighting with high contrast and crisp details. Shot with a 50mm lens, shallow depth, soft background gradient in rich red tones.

Higgsfield \times NANO



TRAINED IMAGE



Higgsfield

A hyperreal editorial portrait where use the subject in the uploaded image is sitting on top of a floating MacBook trackpad as if she is a tiny model posing during a photoshoot. The MacBook is angled stylishly with reflections visible. The main full-sized subject appears behind the laptop in elegant pose, watching the tiny version like an art director. Include brush size and opacity HUD elements floating around for creative context. Warm studio-grade lighting with high contrast and crisp details. Shot with a 50mm lens, shallow depth, soft background gradient in rich red tones.

GEMINI X NANO



TRAINED IMAGE



GEMINI PRO

A playful optical illusion where use the subject in the uploaded image stands behind a floating Photoshop toolbar and interacts with it like real objects. She grabs the Brush Tool icon, tugging at it like it weighs something. Tiny duplicates of her appear inside the color picker window, posing in different attitudes. Red studio backdrop, fashion editorial lighting, sharp shadows for depth. Capture high texture detail: hair edges, jewelry shine, lip gloss reflection. 35mm camera perspective to exaggerate scale play.

Higgsfield X NANO



TRAINED IMAGE



Higgsfield

A playful optical illusion where use the subject in the uploaded image stands behind a floating Photoshop toolbar and interacts with it like real objects. She grabs the Brush Tool icon, tugging at it like it weighs something. Tiny duplicates of her appear inside the color picker window, posing in different attitudes. Red studio backdrop, fashion editorial lighting, sharp shadows for depth. Capture high texture detail: hair edges, jewelry shine, lip gloss reflection. 35mm camera perspective to exaggerate scale play.

GEMINI X NANO



TRAINED IMAGE



GEMINI PRO

A conceptual digital designer goddess scene featuring use the subject in the uploaded image positioned like she is building herself. One version of her sits casually on the “Layers” panel while another full-size version uses a stylus pen to retouch the air. The entire Photoshop UI floats freely around them in 3D space. Clean red environment background with a soft falloff gradient. Ultra-sharp clarity on skin, edges, and clothing details. Shot using an 85mm lens with directional softbox lighting for sculpted shadows and editorial tone.

Higgsfield X NANO



TRAINED IMAGE



Higgsfield

A conceptual digital designer goddess scene featuring use the subject in the uploaded image positioned like she is building herself. One version of her sits casually on the “Layers” panel while another full-size version uses a stylus pen to retouch the air. The entire Photoshop UI floats freely around them in 3D space. Clean red environment background with a soft falloff gradient. Ultra-sharp clarity on skin, edges, and clothing details. Shot using an 85mm lens with directional softbox lighting for sculpted shadows and editorial tone.