

T|M

TRAVIS MATTS

PRESERVATION
DESIGNER

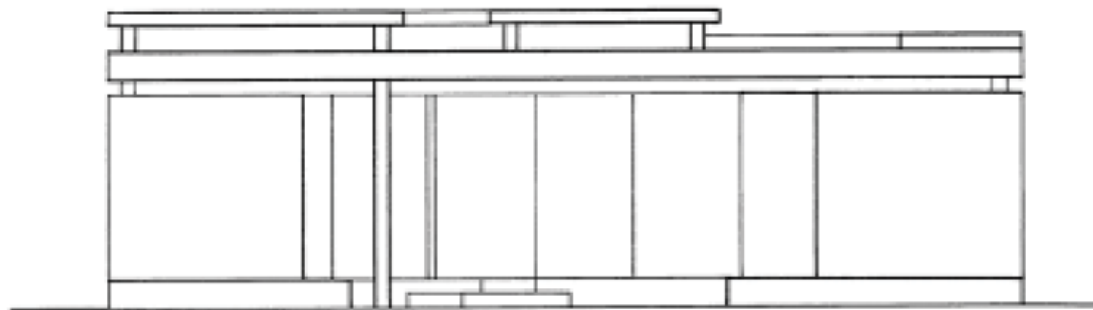
portfolio

TABLE OF CONTENTS

DESIGN	page 01
PRESERVATION	page 33
MIXED MEDIA	page 45

welcome

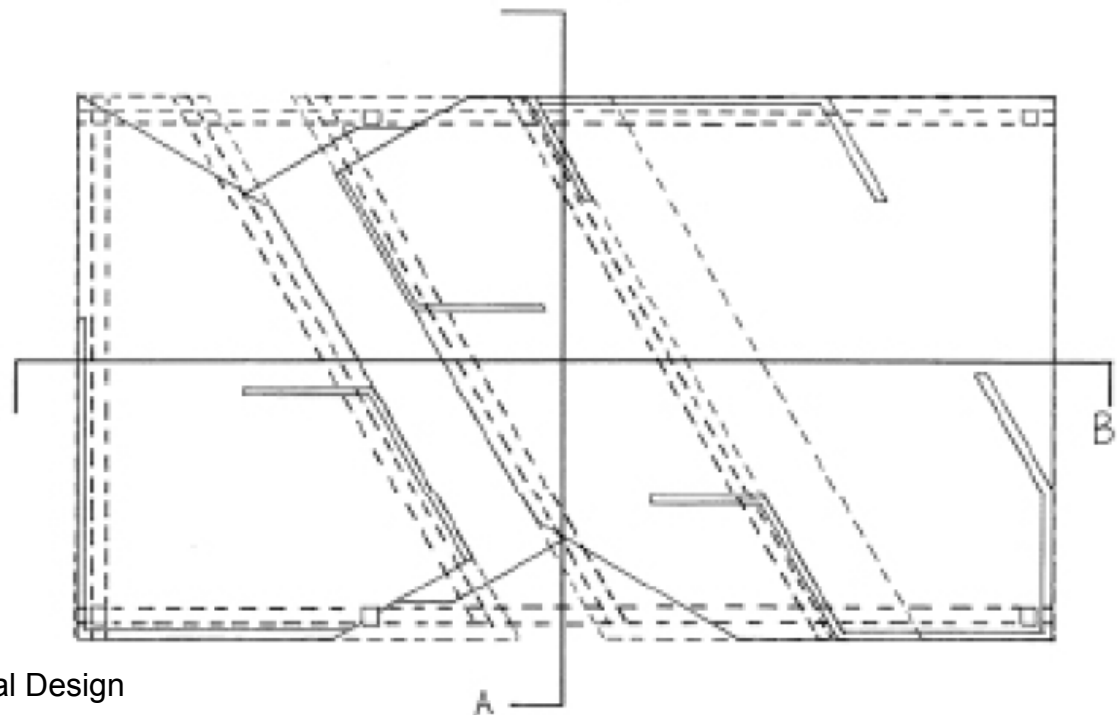
DESIGN



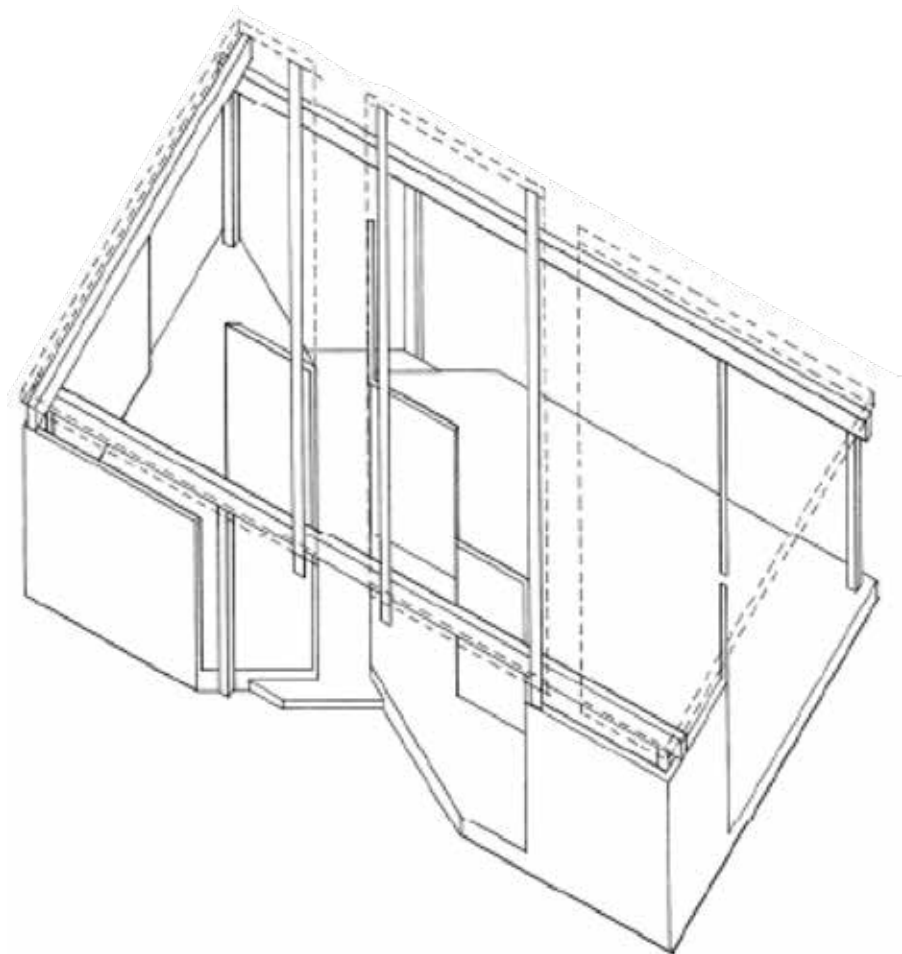
NORTH ELEVATION

*Hand
drafting*

PLAN

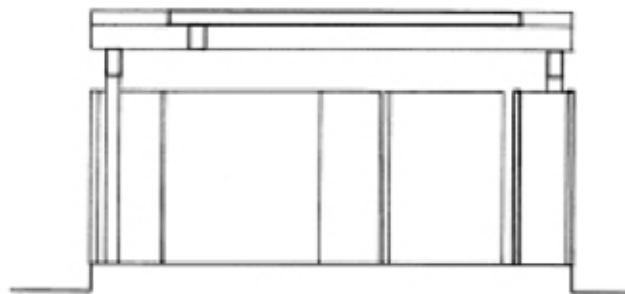


Undergraduate: Architectural Design
Public Pavillion

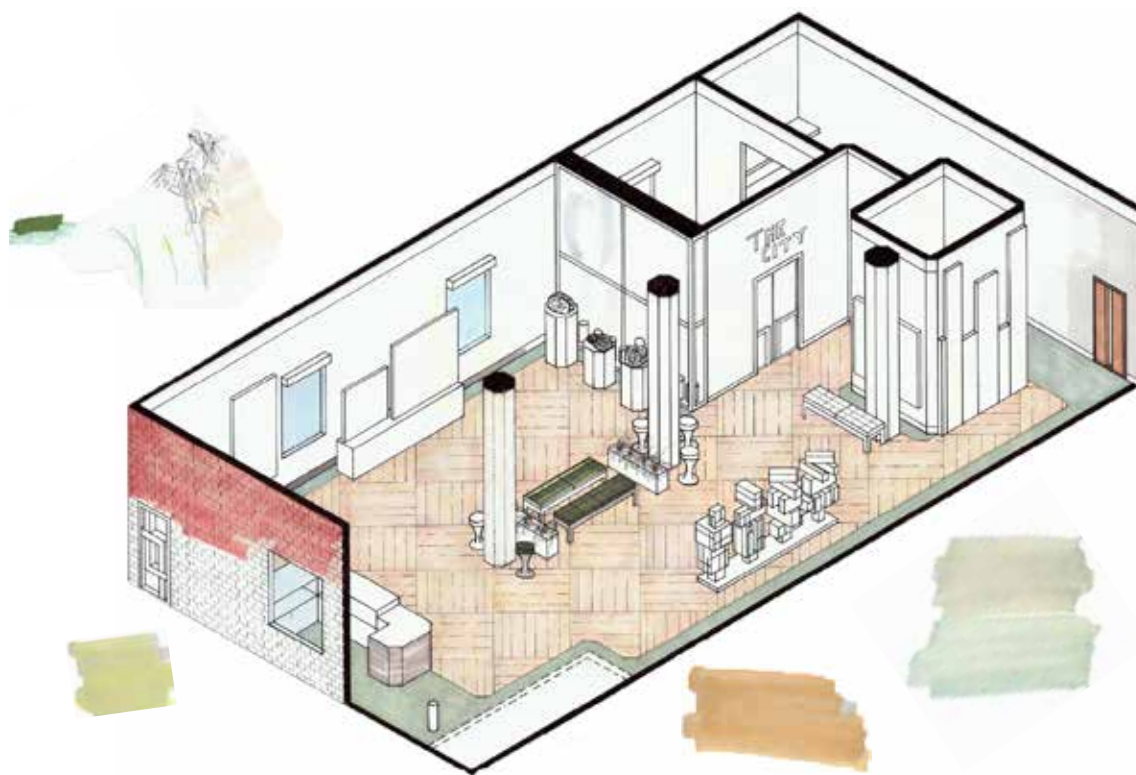


PLAN OBLIQUE

*Hand inked
line-weights*



SECTION A



Design
Development -
start to finish

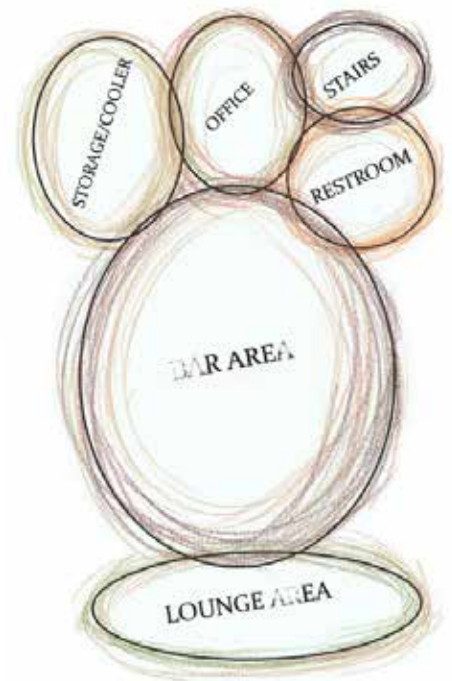
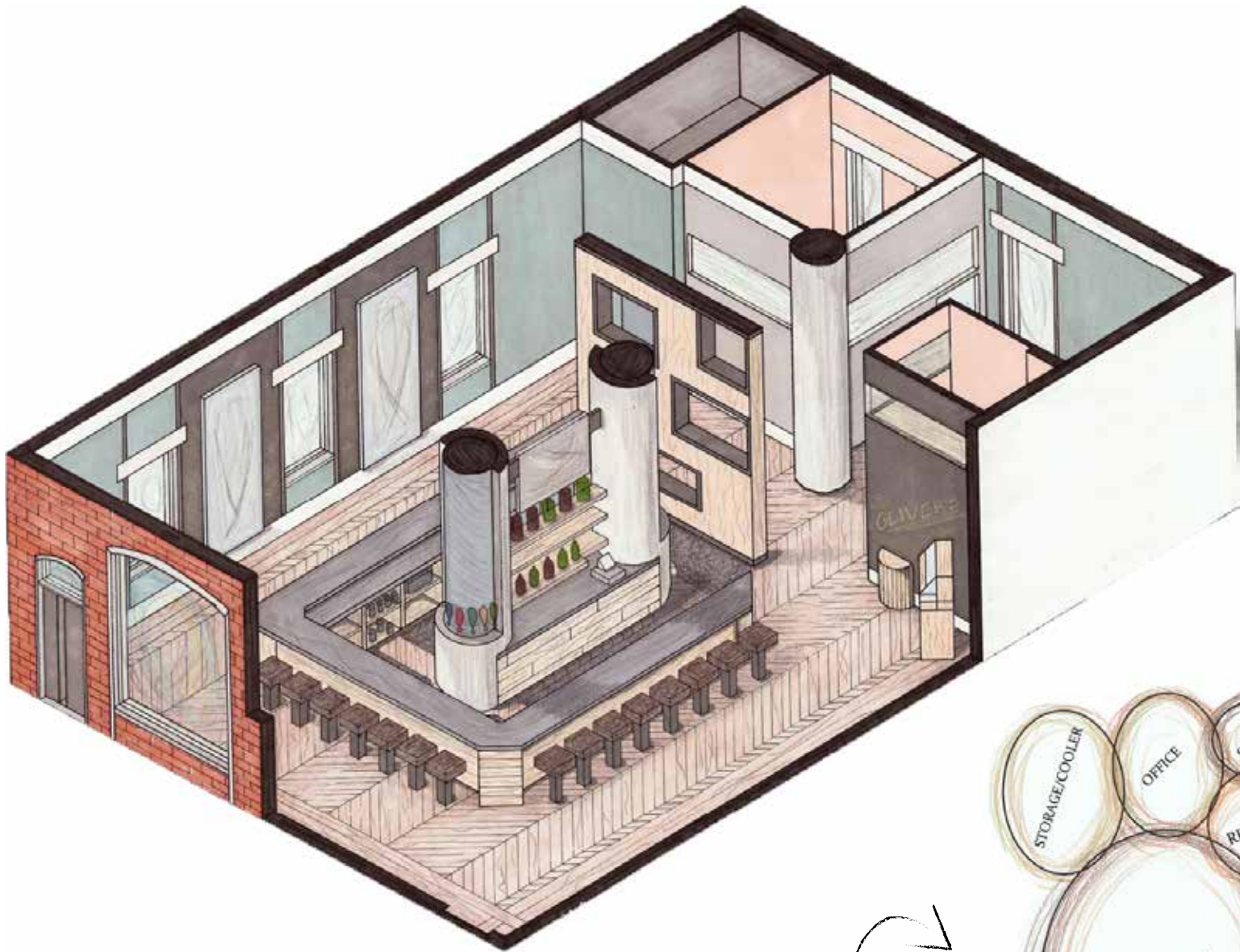


Undergraduate: Interior Design
Gallery Space



Hand
rendering

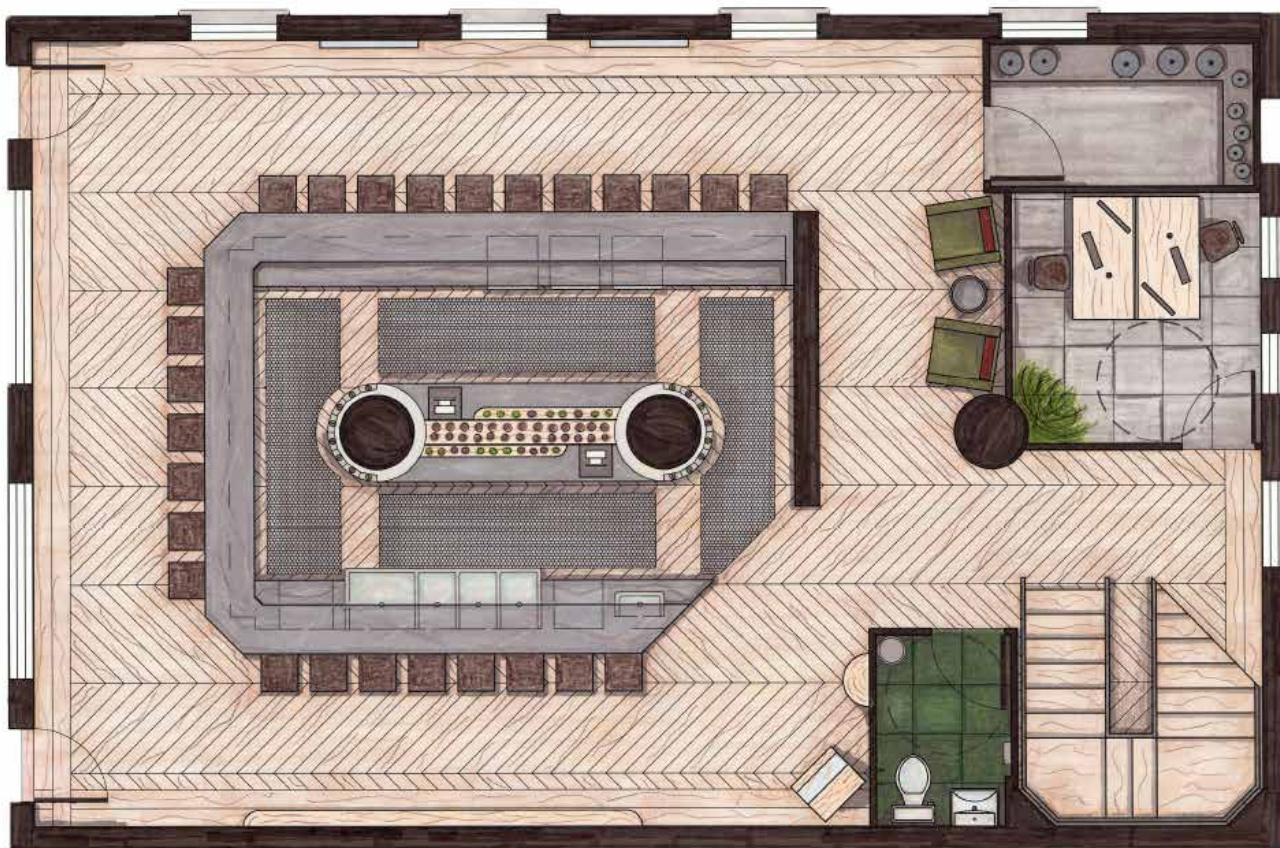




*Space
Programming*

Undergraduate: Interior Design
Retail/Bar Space in Historic Structure

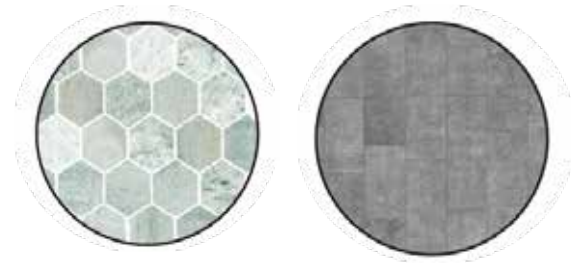
Cohesive
project design >
+ branding





< Digital
 rendering





Hand
rendered detailing

Undergraduate: Interior Design
Kitchen & Bath Renovation



Undergraduate: Interior Design
 Kitchen & Bath Renovation Expansion - Home Addition & Complete Redesign



Electrical Plan



*Reflected Ceiling
Plan*

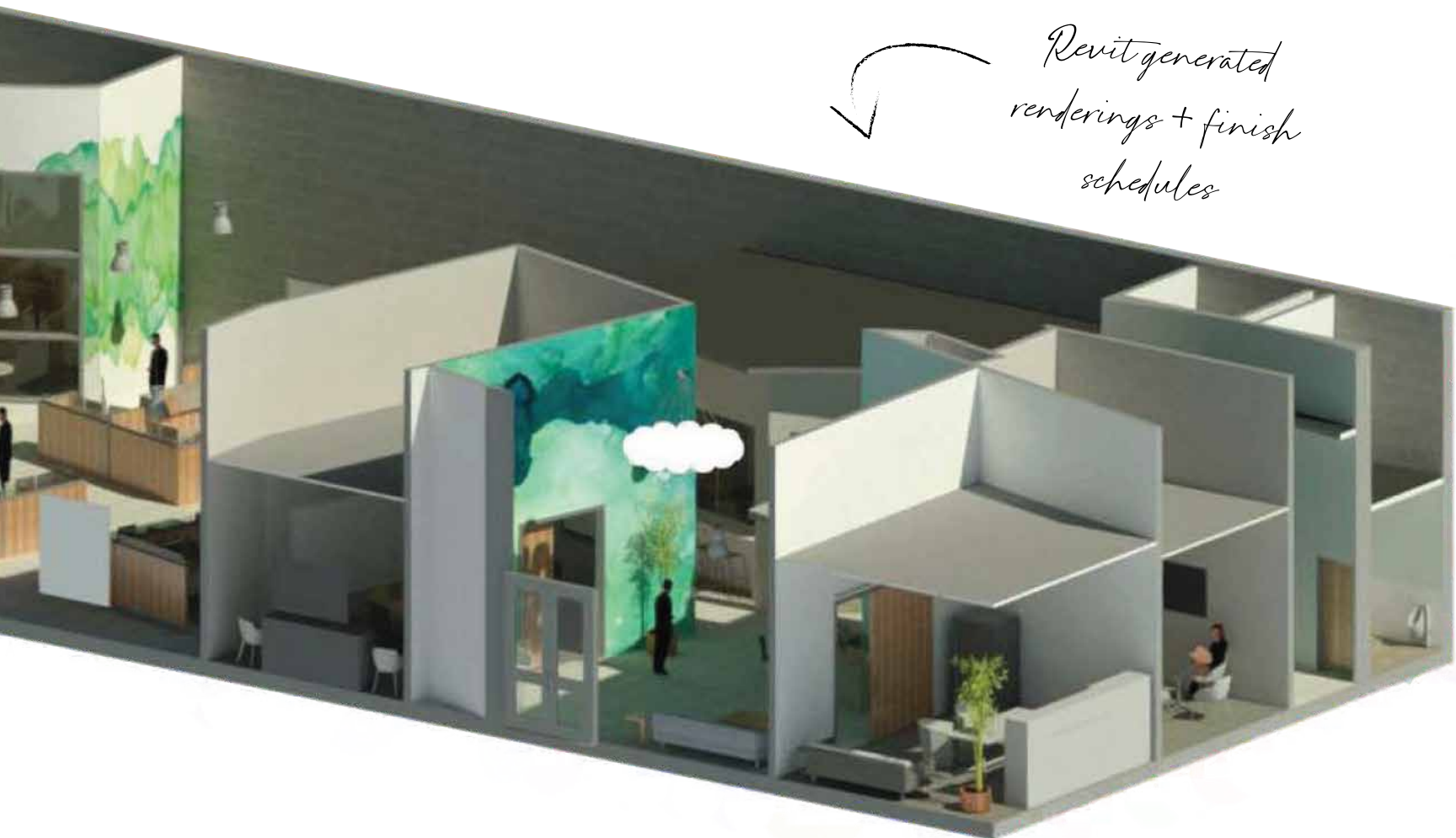
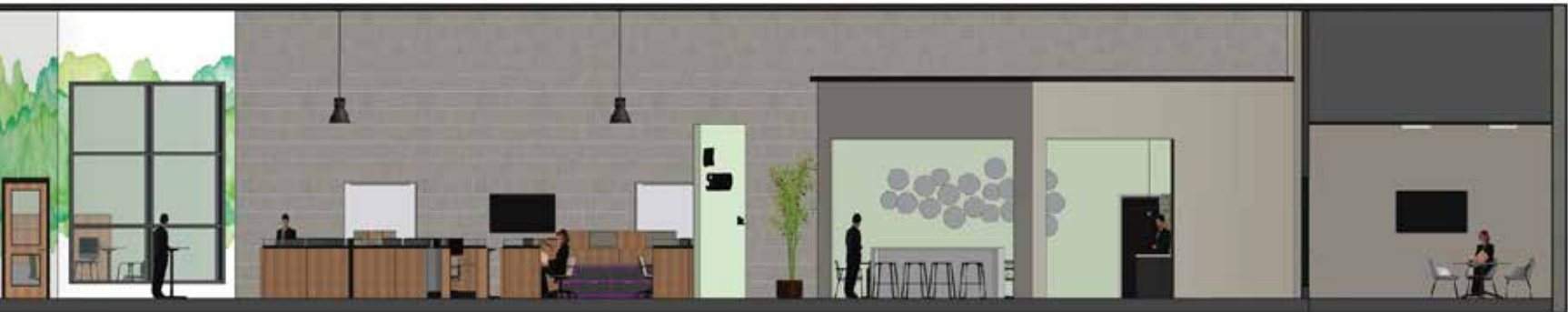




< ADA accessible
inclusive design

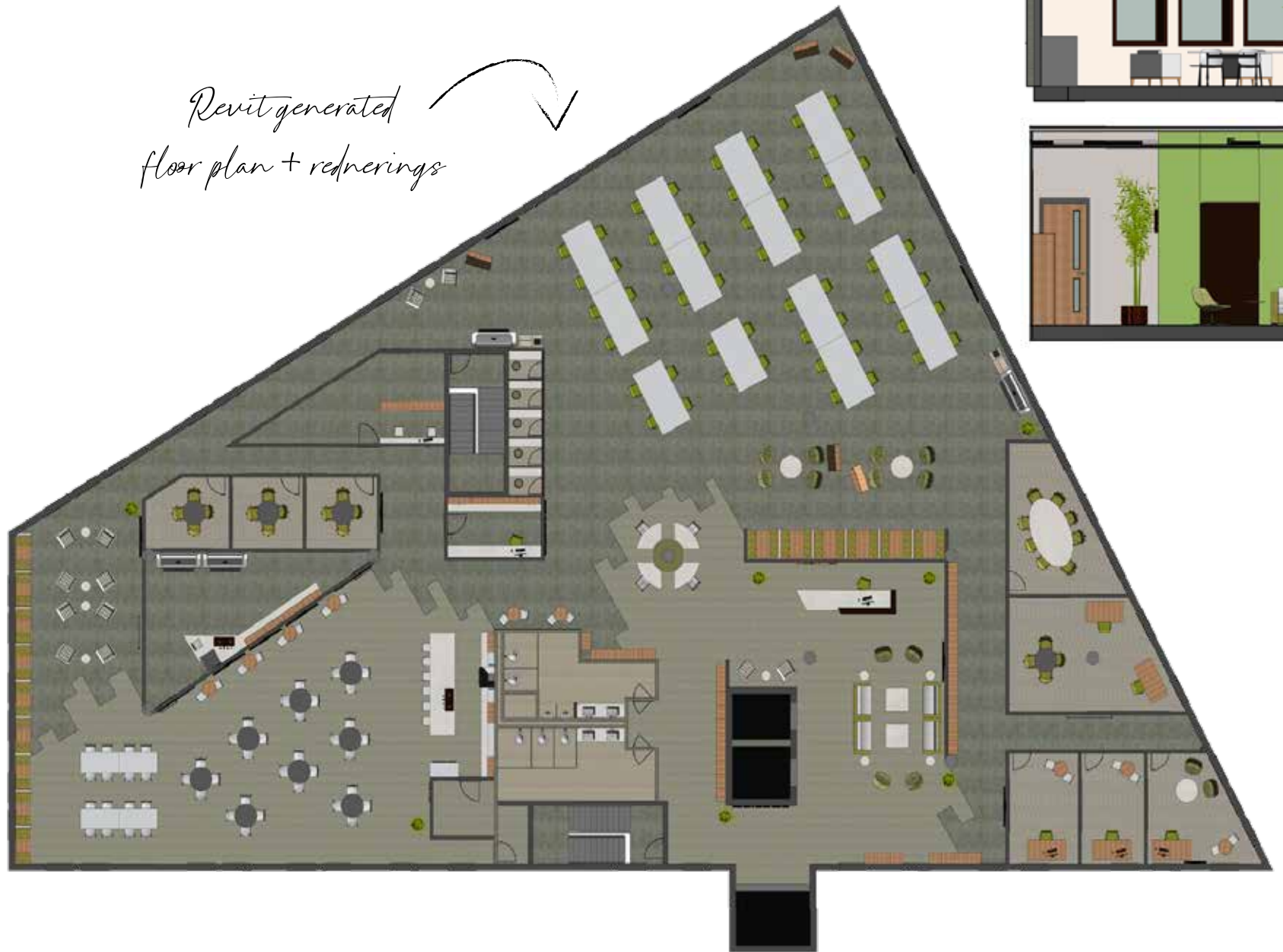
Specific space
detailing >





*Revit generated
renderings + finish
schedules*

Undergraduate: Interior Design
Small-Medium Size Office Space



Undergraduate: Interior Design
Large Communal Office Space in Historic Structure

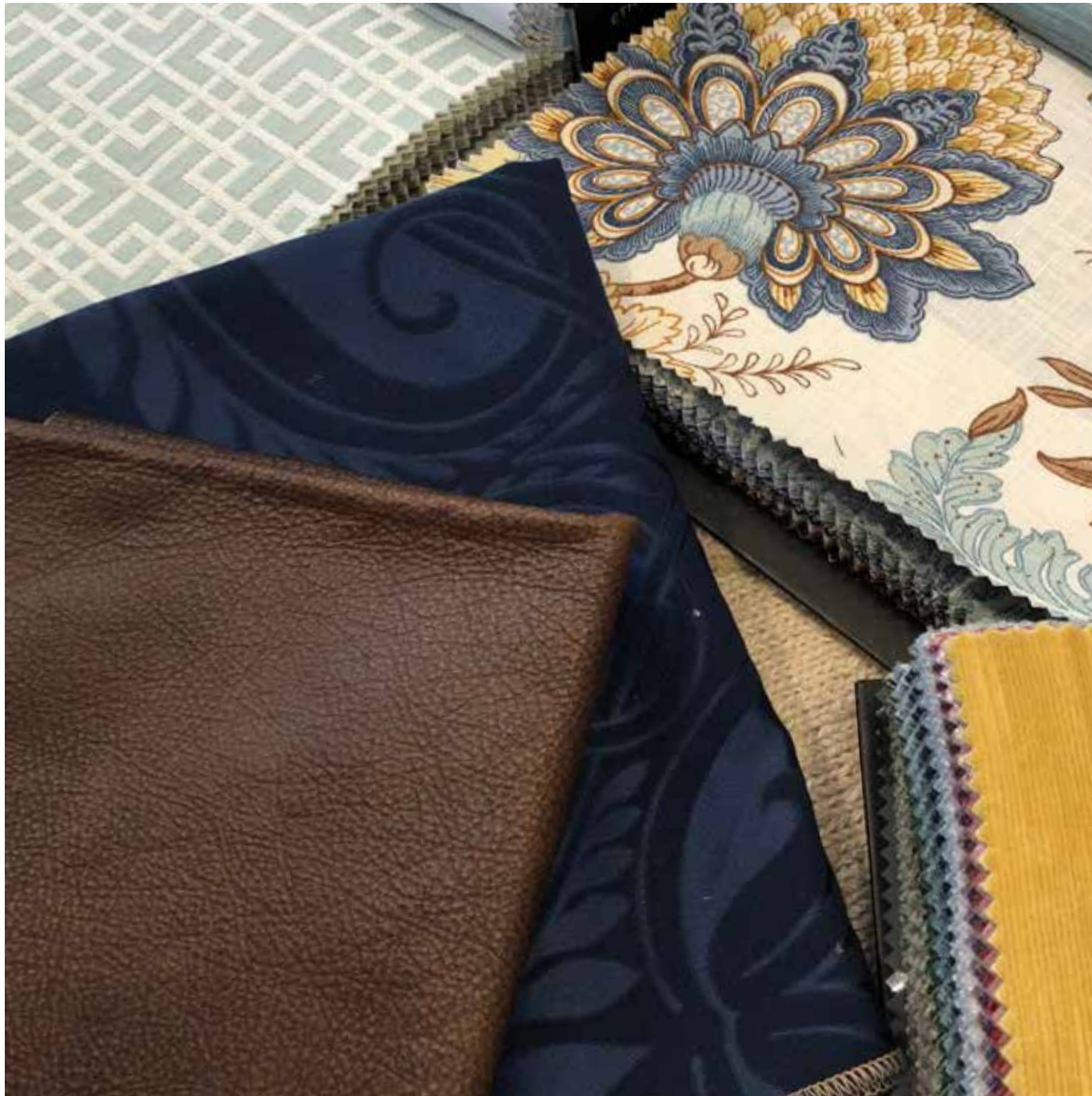


^
Size + scale
appropriate elevations





Luxury Residential:
Living Space Fabric Specification



Luxury Residential:
Conceptual Color + Pattern Specification



*Updated
floorplan*



Luxury Residential:
Living Space Space Planning + FFE Specifications



Luxury Residential:
New Owner Complete Redesign



Pre-design



Mid progress
furniture
installation





Phase 1:
Space demolition



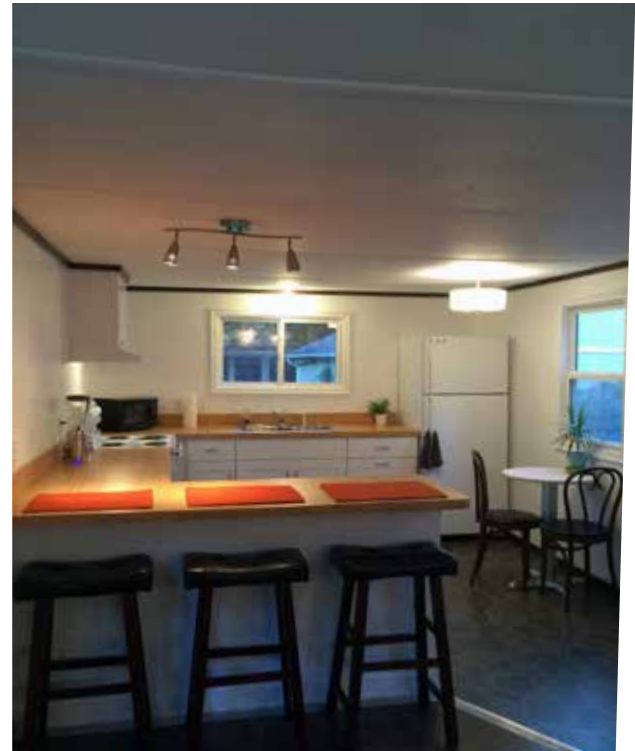
Phase 2: FF&E installation



Residential:
Complete Mobile Home Renovation + Redesign



90% Project
completion
✓





*Collaboration with
Residential Developer
for neutral palette staging*

Residential:
Designer/Developer Showhouse



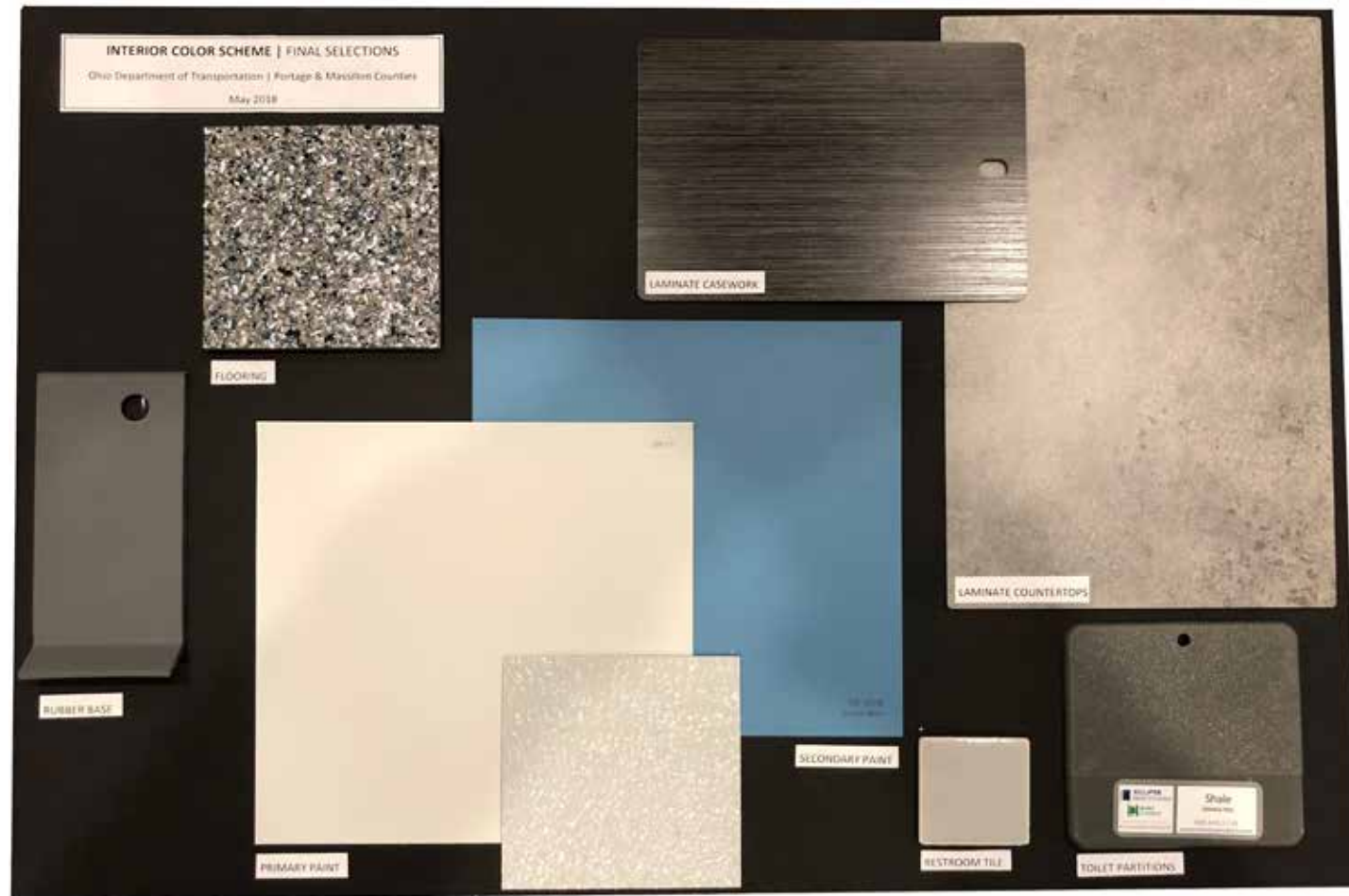


↖
Multi-designer installation
+ staging of furniture,
fixtures, artwork
and decor

*Light + bright palette
✓ for basement redesign*



Luxury Residential:
Basement Finishing + Redesign with FFE Specifications



Public Commercial Facilities:
Design-Build Schematic Planning



*Historic interior space modification
for contemporary use* ^

Historic Institutional:
Complete Renovation/Restoration + Redesign



✓ *Lone student participant for
historic structure research and
redesign potential*



*Historic Grand Stairway (entry)
restoration and code compliance*





7

Historic structure analysis, facade restoration, ADA accessibility modifications and code compliance



Historic Institutional:
Complete Renovation/Restoration + Redesign

*Materials restoration and/or
contemporary replacement
matching*



Interior space re-programming

✓ Eclectic desired style with layered textures
+ cohesive palette



Small Scale Residential:
New Owner Design with FFE Specifications

Open Studio floorplan,
combining bedroom
+ living space



Dark Mediterranean,
yet functional,
desired style

Small Scale Residential:
New Owner Studio Design with FFE Specifications

✓ *Soft palette with aging in place furniture*



Residential:
Bedrom to Nursery Redesign with FFE Specifications

PRESERVATION

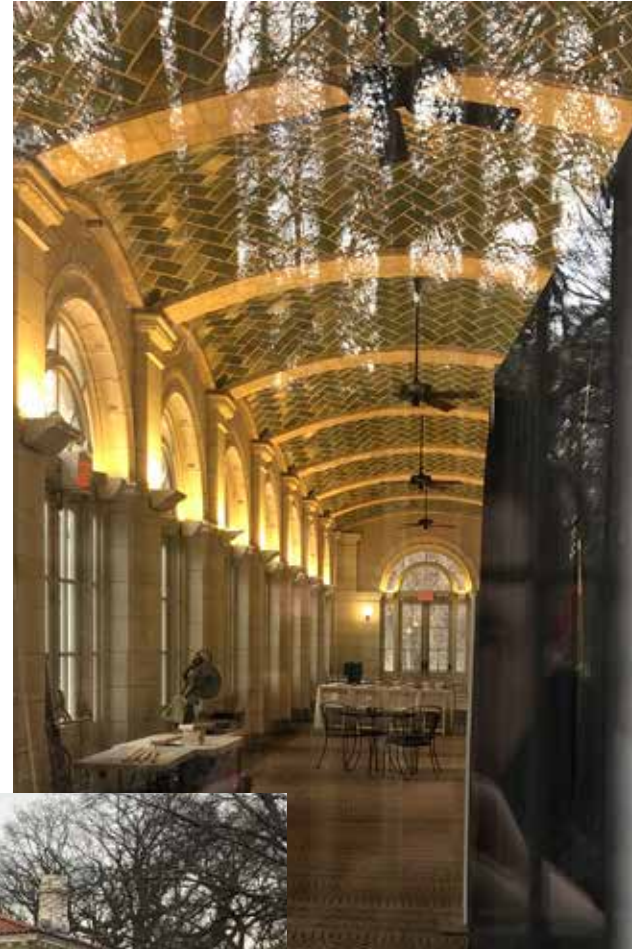


*Historic facade materials
identification + conservation
planning*

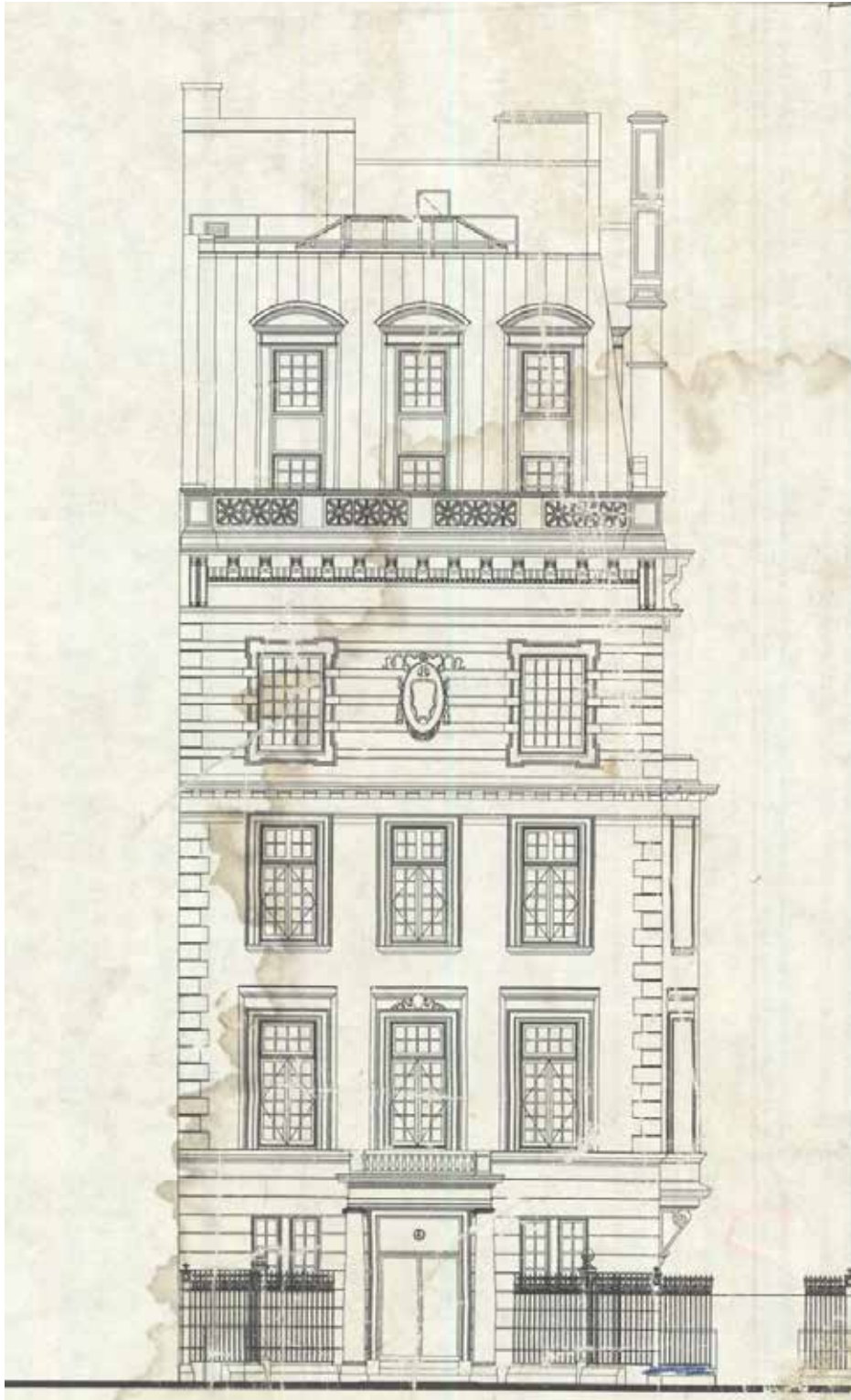
Historic Structure: **Prospect Park Boathouse**
Structural and Materials Conditions Analysis



*Exterior + interior
structural analysis*



All photos ca. 2020



ca. 1983

References:
 Historic architectural
 drawings



ca. 1999



Designed 2020



SketchUp generated
renderings

Historic Structure: **4 E 79th, NYC**
Historic Facade, Fencing, and Courtyard Design Modifications



ca. 1713-1741

< Historic Dutch frame
 Grist mill research +
 subsequent architectural
 evolution dating from 1713

ca. 1917

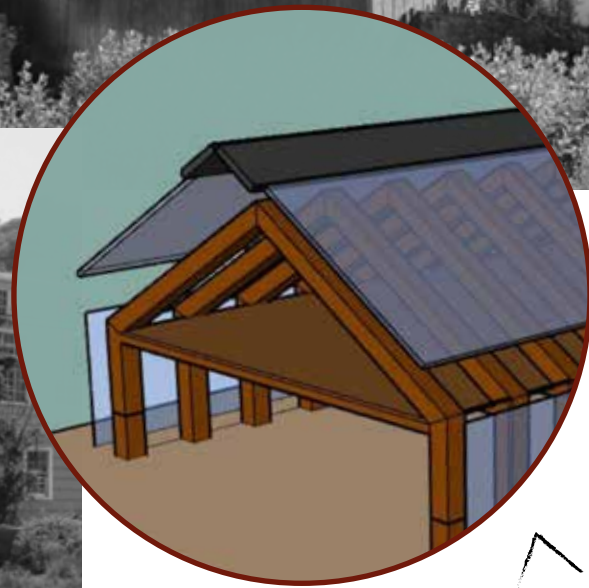


Historic Structure: **Roslyn Grist Mill**
 Site Programming and Use Planning

ca. 2017



ca. 1945



*Architectural + programmatic
planning to ensure appropriate
21st century treatment and
space use*



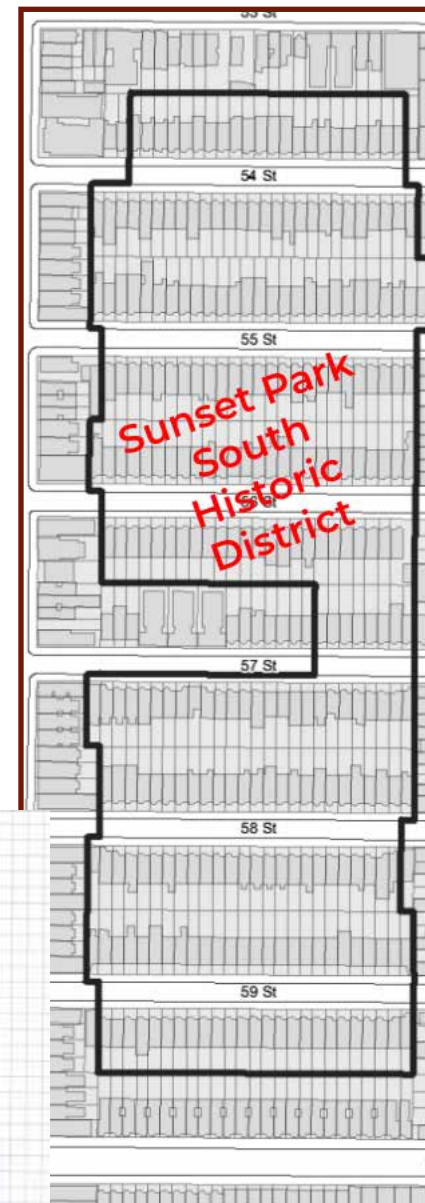
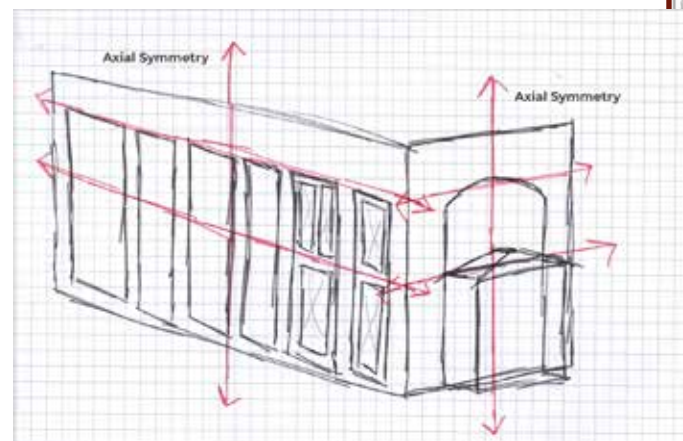
ca. 1912

Reduced Classic
Revival style

ca. 2020



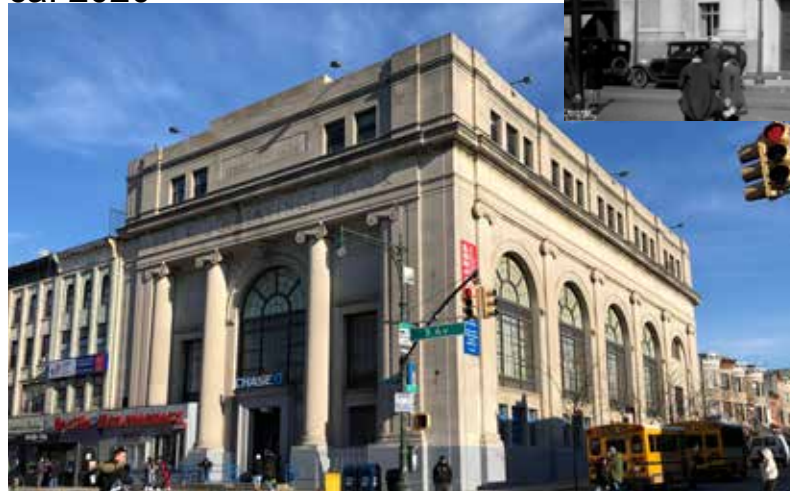
5324 5th Avenue,
Brooklyn NY



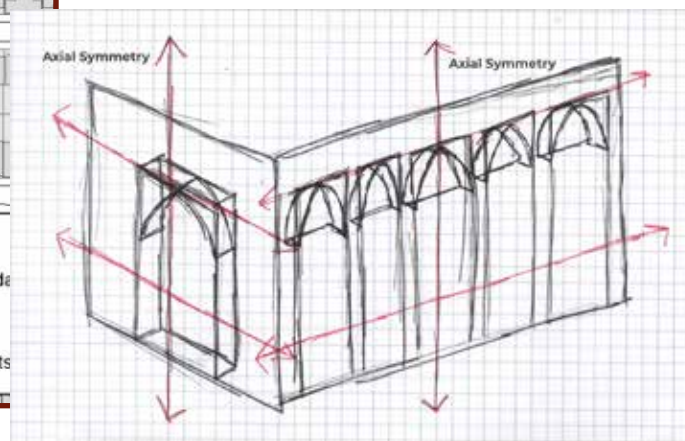
Historic Structure: **The National City Bank of NYC + Bay Ridge Savings Bank**
Architectural Evolution Analysis and Historic Significance Report

*City Beautiful inspired
Classic Revival
architectural style*

ca. 2020



ca. 1926

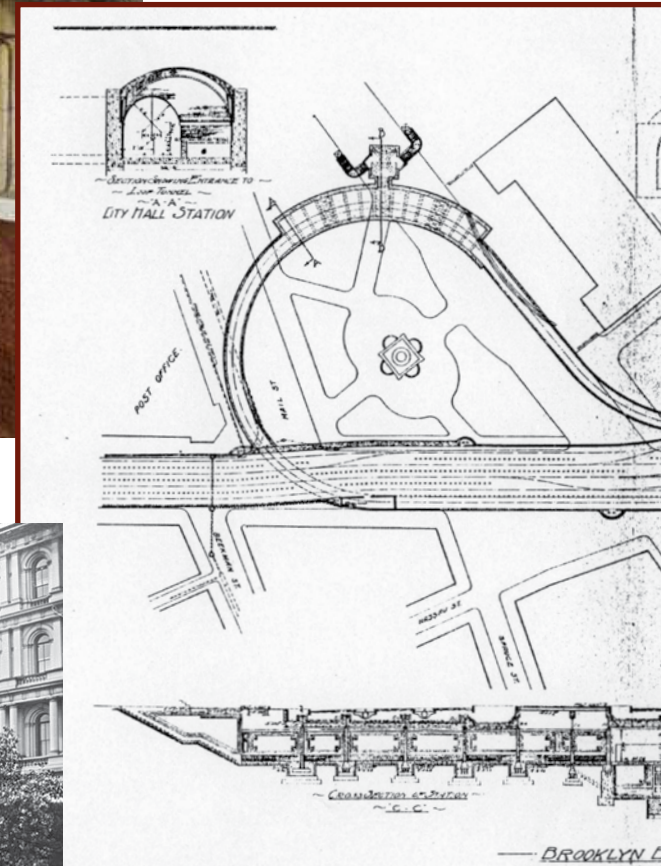


*5323 5th Avenue,
Brooklyn NY*



ca. 1904

Historic function
analysis

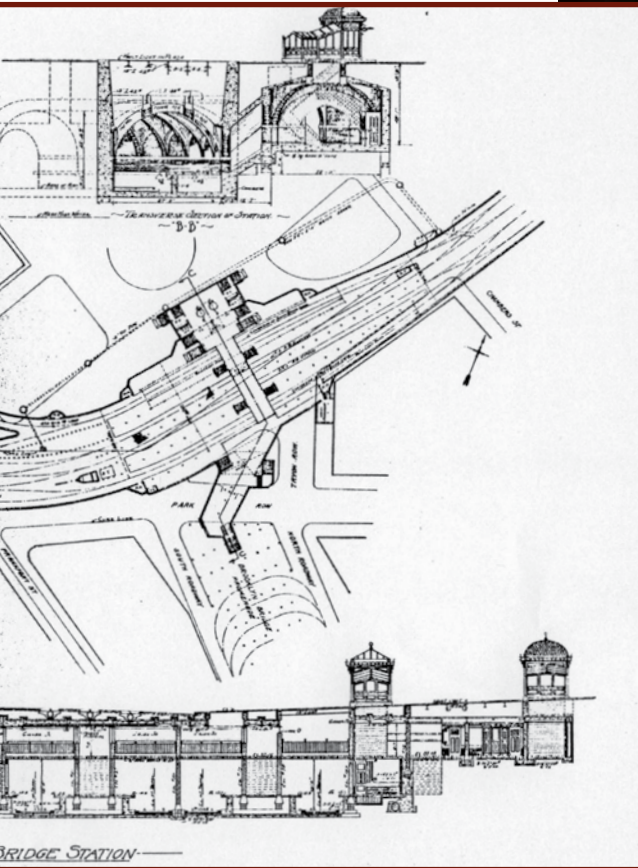


ca. 1910s



ca. 1910s

Historic Structure: **NYC City Hall Subway Station**
Historic Significance Report and Redevelopment Planning



*Necessary design
modifications for
contemporary use*



ca. 2017

Designed 2020





ca. 1930s

*Local cultural +
architectural historic
✓ significance*



*Property neglect with
severe deterioration >*



Historic Structure: **Hotel Fort Wayne, Detroit**
 Historic Significance Report and
 Redevelopment Planning

ca. 2007



*Pre-existing
 property
 development
 planning*



Proposed 2010s



MIXED MEDIA



*Website + documents
development with cohesive branding*



Webpage/Documents Design and Brand Management



Publication design +
 distribution planning



Events planning
with marketing +
outreach materials
creation



✓ Social media
content creation,
cohesive with
organization
brand

Organization Social Media, Events, and Content Management

COMMON BOND

Volume 30, Number 1, Summer 2020

10th

ANNIVERSARY ISSUE

Celebrating All Faiths:

*A Decade of
Sacred Sites
Open House*

Visit mylandmarks.org A Sacred Sites Program

Exploring *Interfaith*

Bringing people and
places together

Inside: Preservation Partnerships | Worship during COVID-19 | Restoration of Hope | Moslem Mosque |
Preservation in Québec | Diverse Restorations | Fire Protection | Accessibility | 2019 Grants

Professional Magazine Publication Design

thank you

