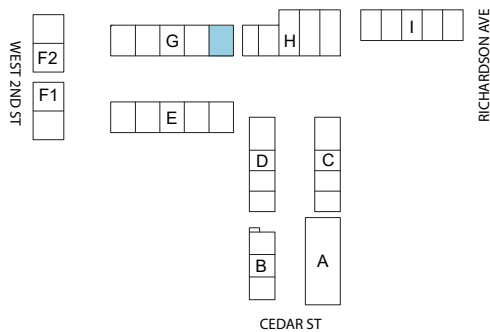


# BONAIRE PARK

208 South Cedar Street | Summerville, SC 29483

Unit G5 | 3 Bed-3 $\frac{1}{2}$  Bath



SITE - KEY PLAN



BUILDING G - ELEVATION

Heated Area - 2250 sqft

Garage Area - 420 sqft

Roof Deck Area - 630 sqft

Bonaire Park reserves the right to make modifications and changes to the information contained herein. Price and availability subject to change. Renderings, photos and sketches are representational and may not be totally accurate. Dimensions, sizes, specifications, layouts, views and materials are approximate and subject to change without notice.

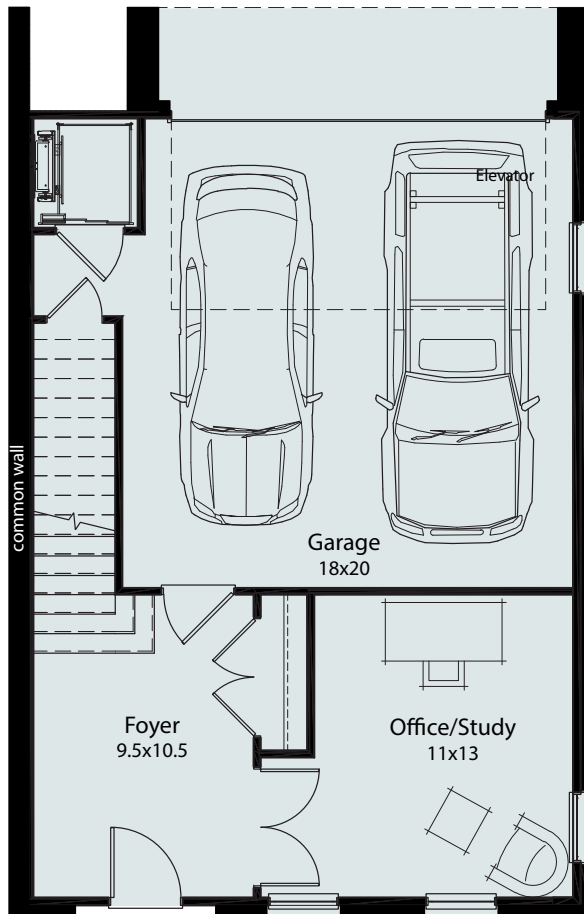
[Bonaire-park.com](http://Bonaire-park.com)

© South Cedar Development Associates, LLC 2023  
An affiliate of JJR Development, LLC  
All Rights Reserved

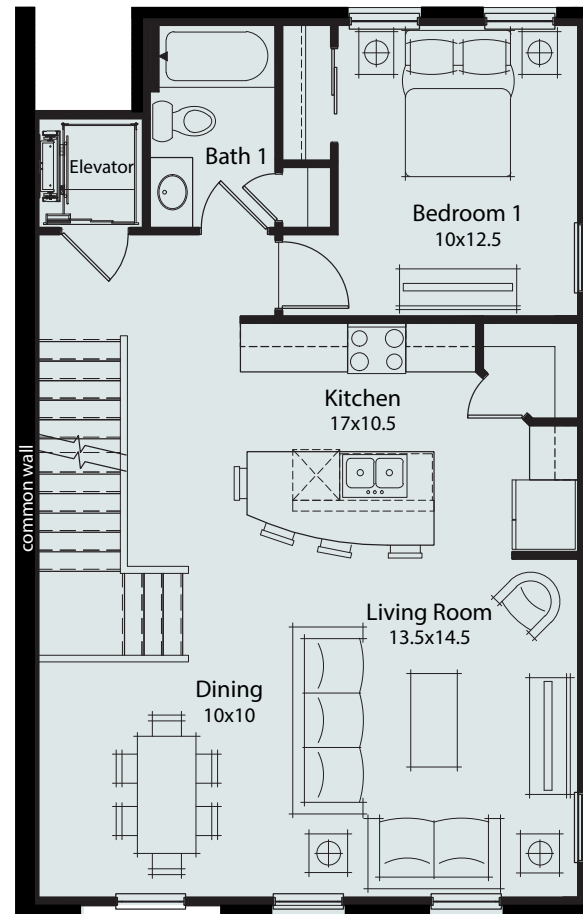
# BONAIRE PARK

208 South Cedar Street | Summerville, SC 29483

Unit G5 | 3 Bed-3 $\frac{1}{2}$  Bath



1st FLOOR - 9ft ceilings



2nd FLOOR - 10ft ceilings

Heated Area - 2250 sqft

Garage Area - 420 sqft

Roof Deck Area - 630 sqft

Bonaire Park reserves the right to make modifications and changes to the information contained herein. Price and availability subject to change. Renderings, photos and sketches are representational and may not be totally accurate. Dimensions, sizes, specifications, layouts, views and materials are approximate and subject to change without notice.

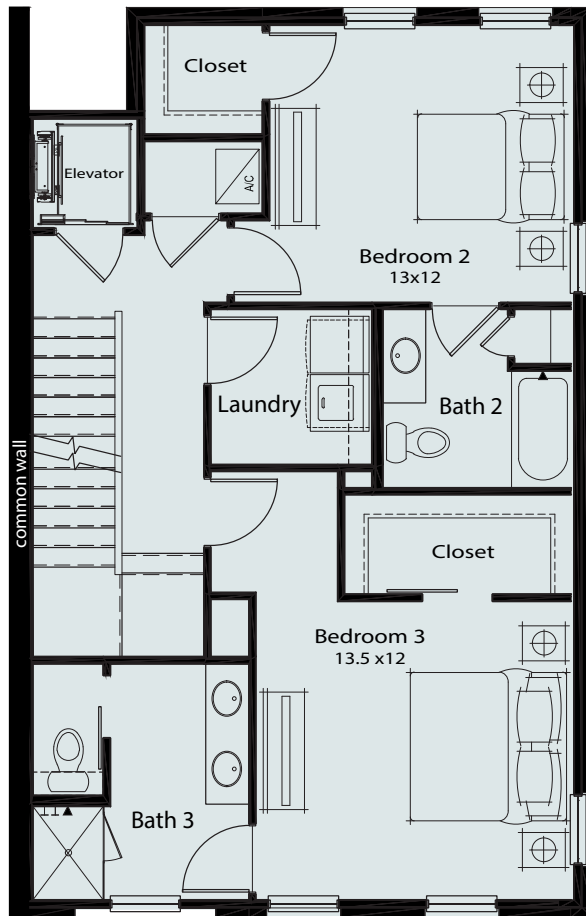
[Bonaire-park.com](http://Bonaire-park.com)

© South Cedar Development Associates, LLC 2023  
An affiliate of JJR Development, LLC  
All Rights Reserved

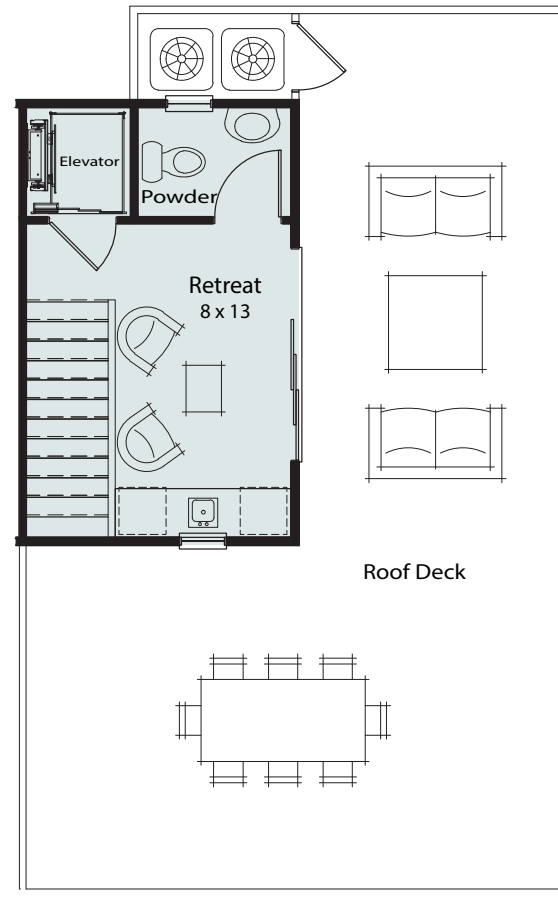
# BONAIRE PARK

208 South Cedar Street | Summerville, SC 29483

Unit G5 | 3 Bed-3 $\frac{1}{2}$  Bath



3rd FLOOR - 9ft ceilings



PENTHOUSE - 9ft ceilings

Heated Area - 2250 sqft

Garage Area - 420 sqft

Roof Deck Area - 630 sqft

Bonaire Park reserves the right to make modifications and changes to the information contained herein. Price and availability subject to change. Renderings, photos and sketches are representational and may not be totally accurate. Dimensions, sizes, specifications, layouts, views and materials are approximate and subject to change without notice.

[Bonaire-park.com](http://Bonaire-park.com)

© South Cedar Development Associates, LLC 2023  
An affiliate of JJR Development, LLC  
All Rights Reserved