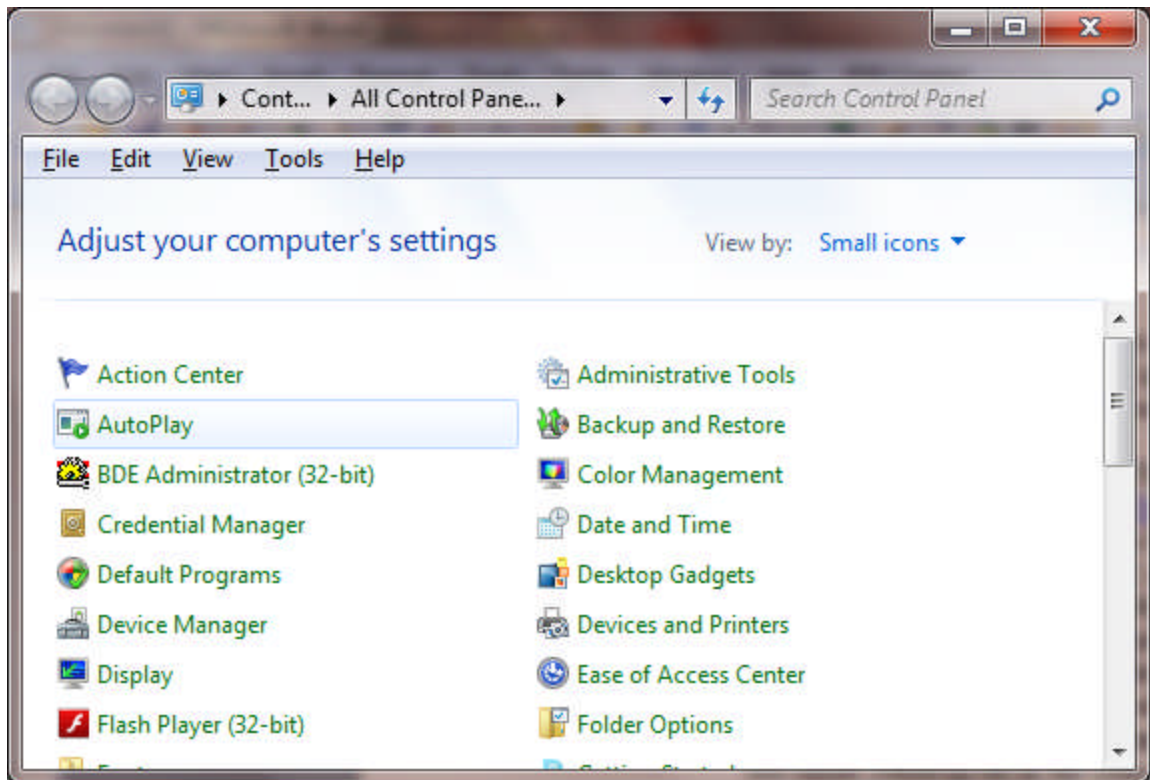


Converting Tithe 4 data to Tithe 6

In order to convert your Tithe 4 data to Tithe 6, you need the latest version of the Tithe Utility (Version 4.4.6.10 or later). This version of the Tithe Utility is included in the Tithe 4.4.6.7 download on my web site.

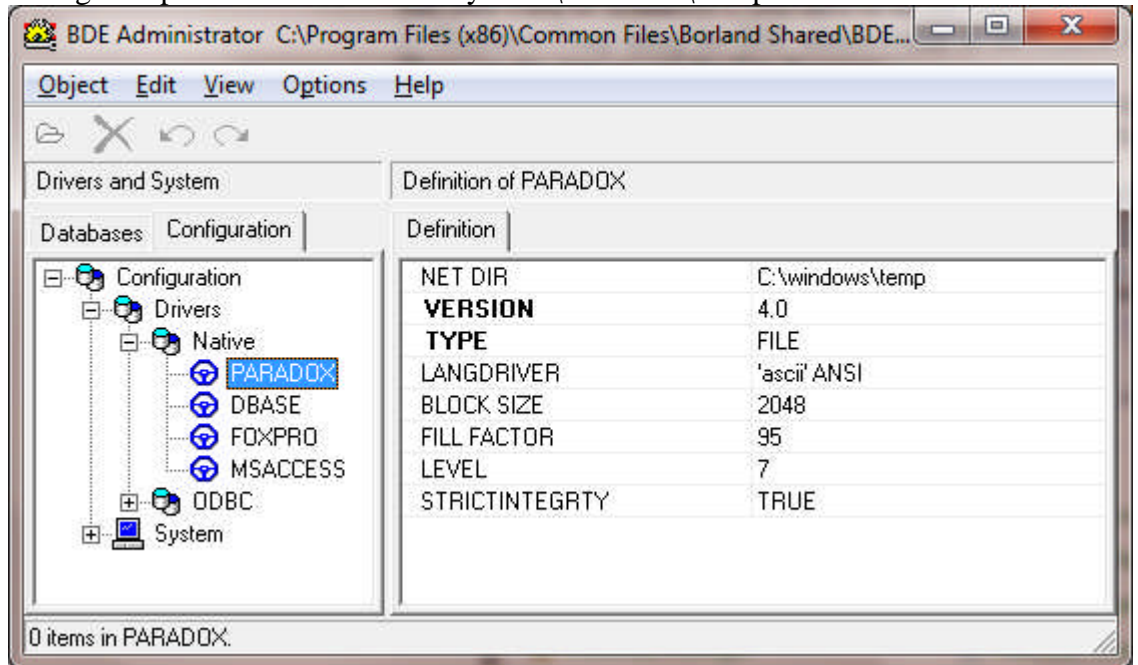
Download Tithe 4.4.6.7 with the Tithe Utility 4.4.6.10 from <http://churchware.com/programs/Tithe446.exe> To run Tithe 4 or the Tithe Utility on a PC that uses Vista or Windows 7, you have to set the Net directory to C:\Windows\Temp using the BDE administrator in the Control Panel. These are the steps to set the Net directory:

1. Open the Control Panel and select Small Icons on the view option in the upper right part of the Control Panel window. This will allow you to see the BDE administrator Icon.

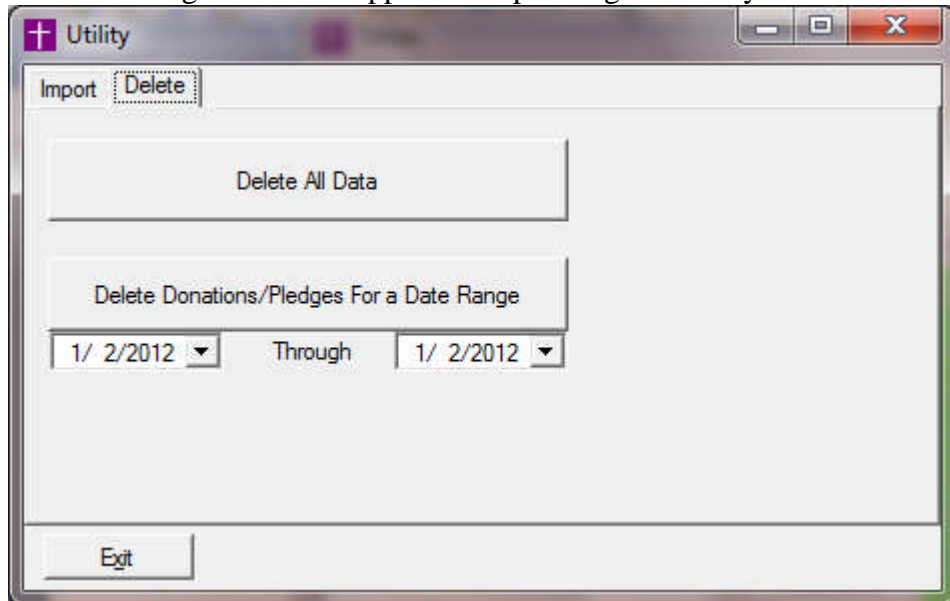


2. Open the BDE Administrator Icon and then:
 - a. Click the Configuration Tab
 - b. Click Drivers
 - c. Native
 - d. Paradox

- e. Change the path of the Net Directory to C:\Windows\Temp

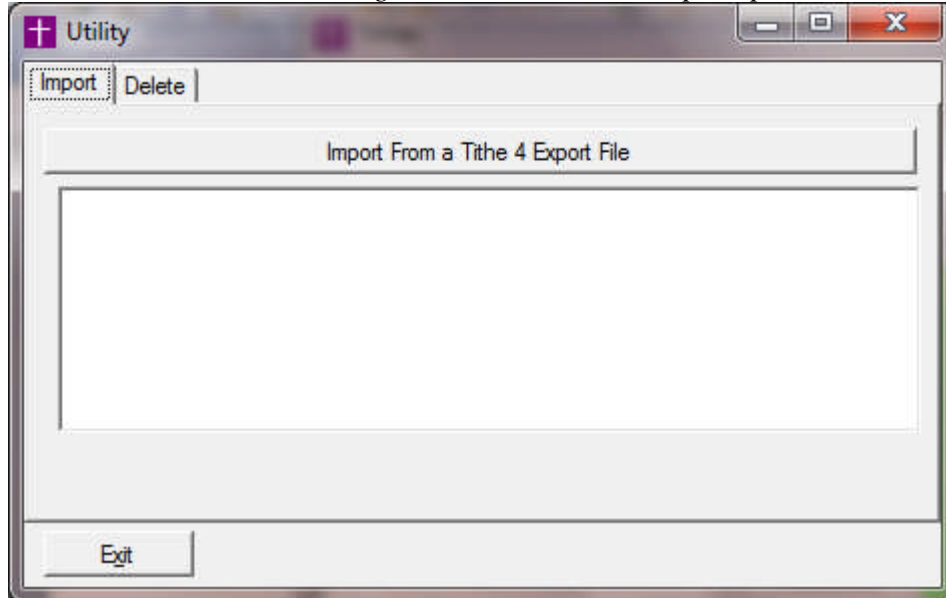


3. Open the Tithe Utility ver 4.4.6.10 using the Screwdriver Icon on the desktop.
- Run the **Export to CSV File** option. This creates a file called TitheExp.txt in the Tithe4 folder (normally C:\Tithe4).
 - Now open Tithe 6 and import the TitheExp.txt file. To do this, open the Tithes screen and click the Utility button. If you need to install Tithe 6, download the current version from: <http://churchware.com/programs/Tithe6/setup.exe>
 - The following screen will appear after pressing the Utility button:



- d. **Important:** This import option will not delete data currently in Tithe 6, it only adds new data so you probably need to delete all sample or old data

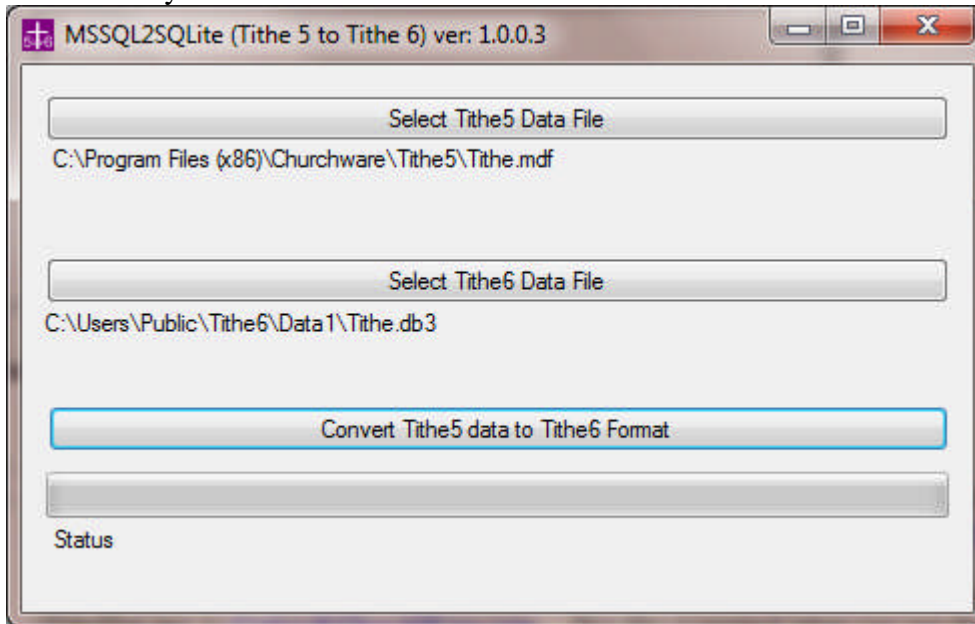
before importing the *TitheExp.txt* data file. Use the **Delete All Data** option and I recommend deleting all the accounts when prompted.



- e. Then click the Import button.
- f. After you select the *TitheExp.txt* file, the process is automatic; however, if you get any errors while exporting or importing, please send an email to Cedric@ChurchWare.com) and provide some details about the error.
- g. If you need help, do a backup from the Tithe Utility (4.4.6.10) and email the backup file (*TitheDat.zip*) to Cedric@ChurchWare.com . This file is created when you run the backup option and is located in the `C:\Tithe4\Data\Zip` folder. If you installed Tithe in a different folder, your path will be different.

Importing Tithe 5 data to Tithe 6

Tithe6 includes a conversion program called MSSQL2SQLite.exe and this can be found on the Windows menu (Start, All Programs, Tithe6, Tools, MSSQL2SQLite). When you first start MSSQL2SQLite, it will look for the Tithe installation folder and set it automatically if it finds it. It also sets the default Tithe 6 data folder.



Important: If you just installed Tithe 6, you need to start it once before using the MSSQL2SQLite program because the Tithe 6 data folder and Tithe.db3 data file will not yet be created and these are required to convert your Tithe 5 data.

Tithe 5 used a database engine from Microsoft called MS SQL Express. Tithe 6 uses an embedded engine called SQLite. With Tithe 6, you do not need to install MSSQL Express but you will need it installed to convert your data because MSSQL2SQLite needs this to convert your data to the SQLite format.

Don't forget to check your donation and receipt messages. Here is a sample. Thank you for your supporting the ministries of our church. No goods or services have been provided in connection with any deductible gift listed. The only benefit received by the donor was an intangible religious benefit.

Joseph P. Sample, Treasurer