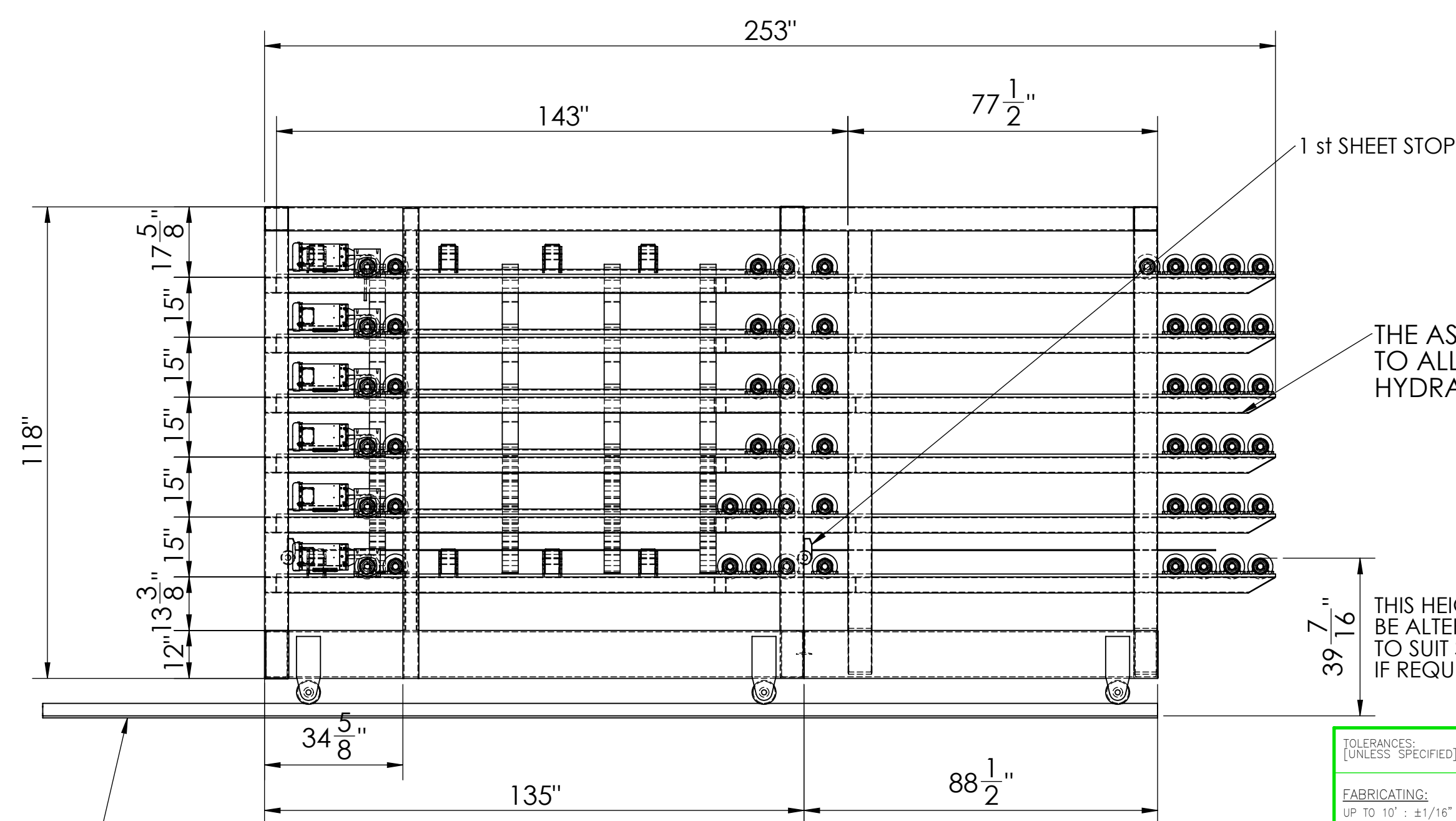
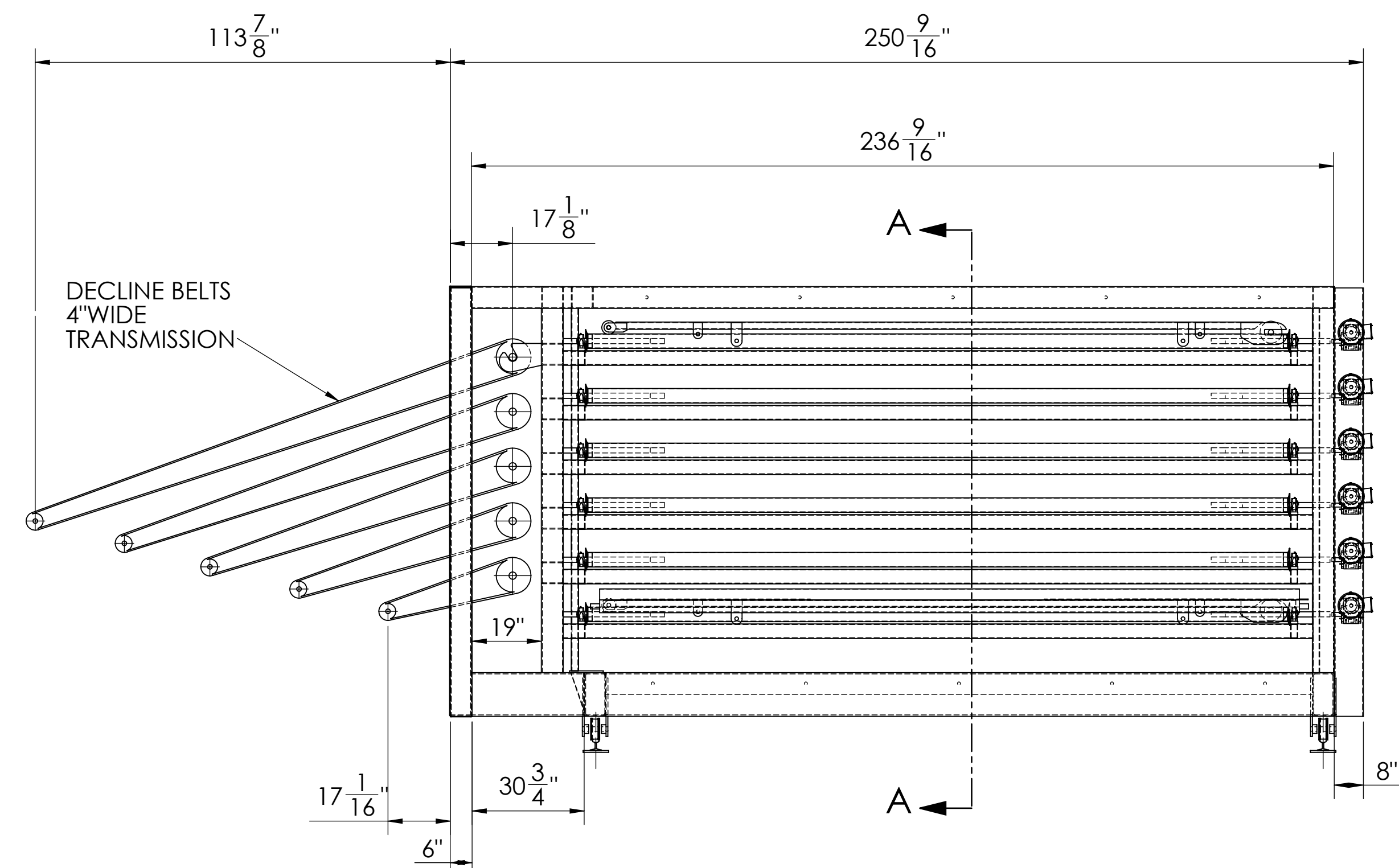

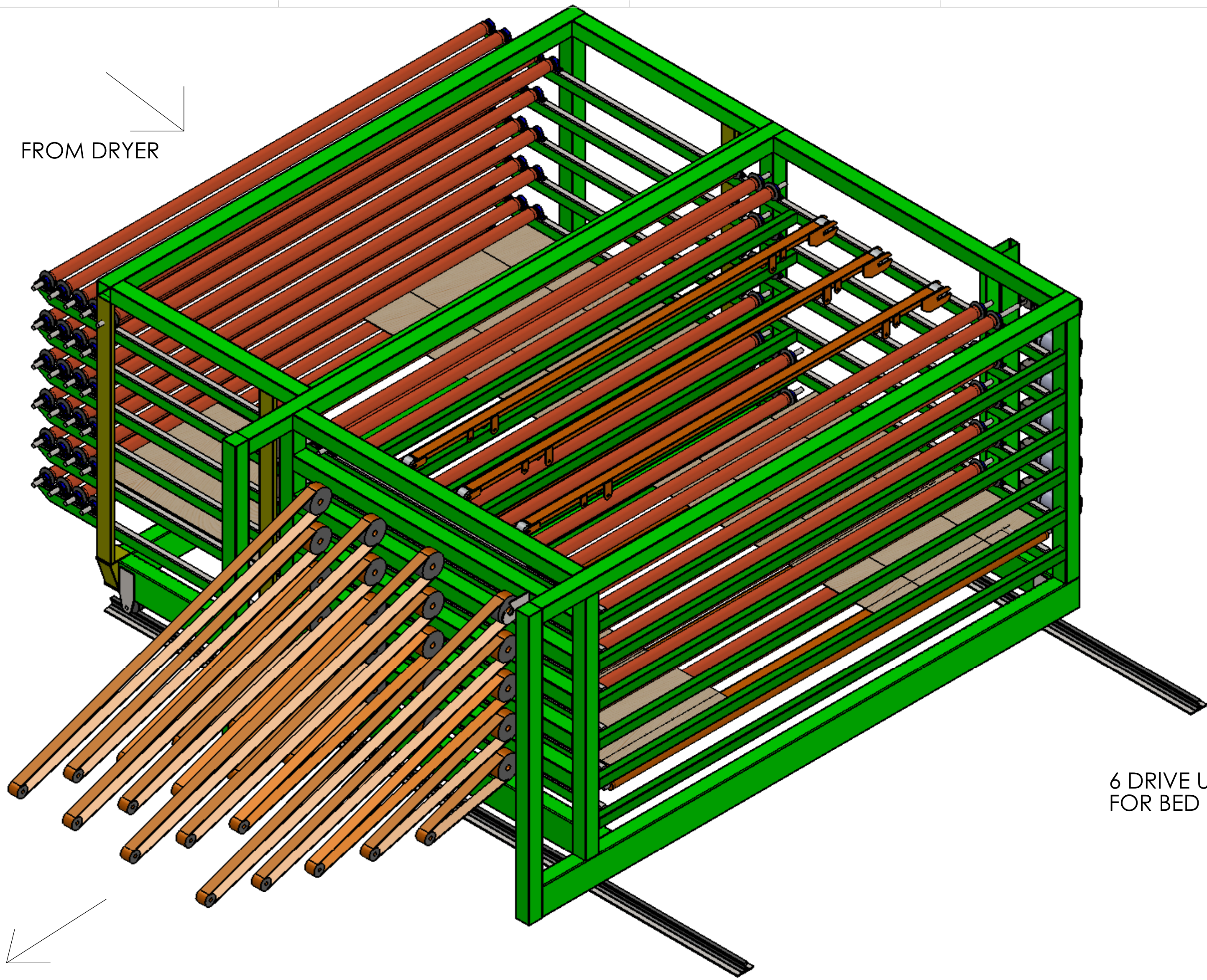


SECTION A-A

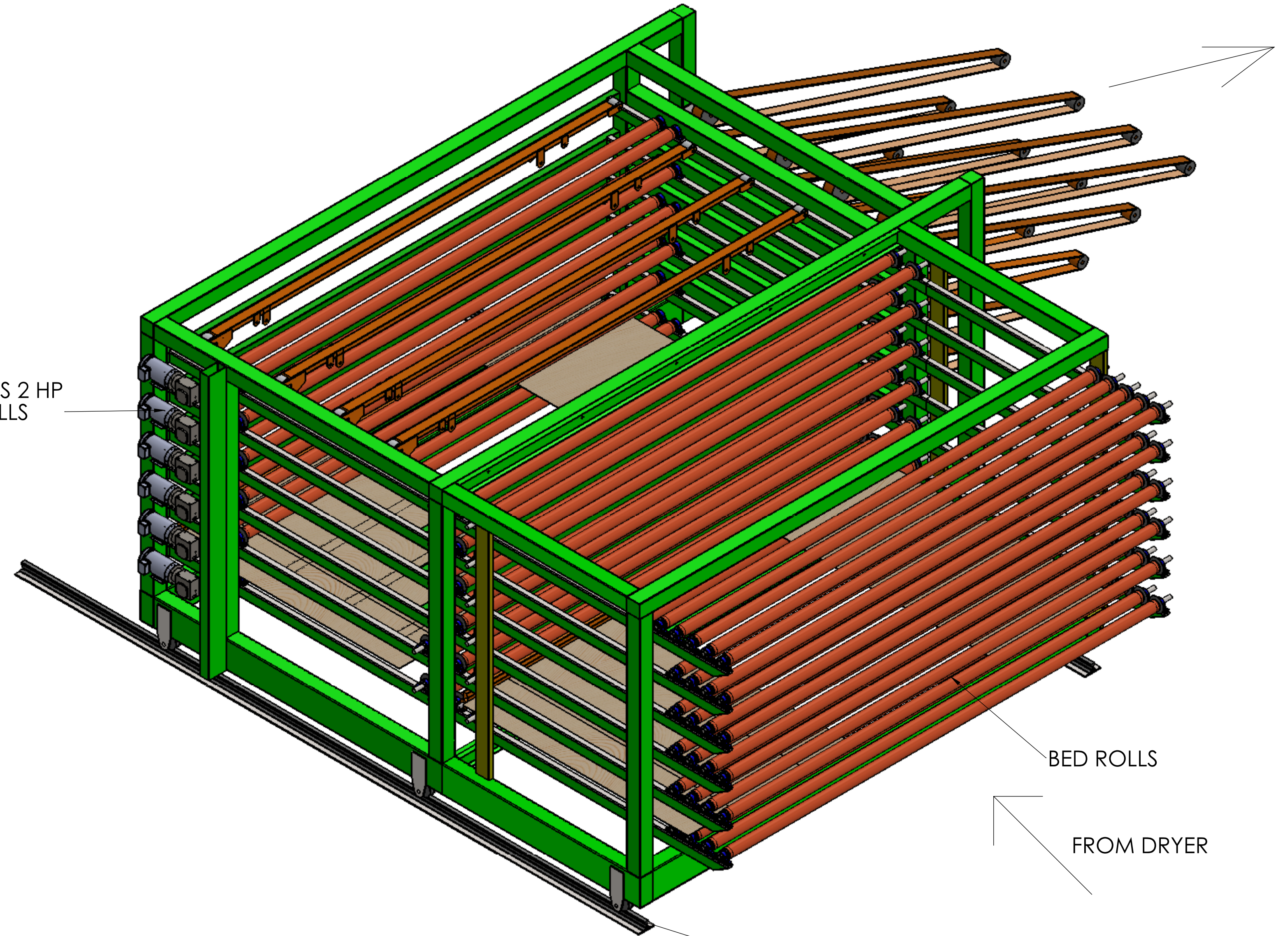


THIS IS A CONCEPTUAL LAYOUT
AND DESIGN IS SUBJECT TO FINAL
MODIFICATIONS.

TOLERANCES: [UNLESS SPECIFIED]		WORK CODE:		 WESTMILL INDUSTRIES		www.westmill.com	
WCODE						TEL: 877-607-7010 FAX: 877-607-7099	
FABRICATING: UP TO 10" : ±1/16" ABOVE 10" : ±1/8" HOLE LAOUT: ±1/32"		NXT_ASSY4 DRAWN BY: Ron Howarth	MODEL/PROJ: PROJECT	APPROVED: DATE: 02/04/17			
NXT_ASSY3 DATE: 02/04/17		March, 2013		DATE: 02/04/17			
MACHINING: FRACTIONAL: ±1/32" ANGULAR: ±0.5 DEG 2 PLACE DEC: ±0.01" 3 PLACE DEC: ±0.001"		NXT_ASSY2 NXT_ASSY		CONCEPTUAL LAYOUT FOR 6 LEVEL 90 DEGREE DRYER TRANSFER			
WHERE USED OR NEXT ASSEMBLY		PART No:	SCALE:	SHEET: SHEET#1of 2	DWG No: 150-15	SIZE: D	REV:



6 DRIVE UNITS 2 HP
FOR BED ROLLS



ISOMETRIC VIEWS

THIS IS A CONCEPTUAL LAYOUT
AND DESIGN IS SUBJECT TO FINAL
MODIFICATIONS.

ALL ROLLS AND FEATURES ARE NOT SHOWN

150-15

TOLERANCES: [UNLESS SPECIFIED]		WORK CODE		WESTMILL INDUSTRIES		www.westmill.com	
FABRICATING: UP TO 10' ±1/16" ABOVE 10' ±1/8" HOLE LAYOUT: ±1/32"		DRAWN BY: Ron Howarth		DATE: March, 2014		APPROVED:	
MACHINING: FRACTIONAL: ±1/32" ANGULAR: ±0.5 DEG 2 PLACE DEC: ±0.01" 3 PLACE DEC: ±0.001"		PROJECT		CONCEPTUAL LAYOUT FOR 6 LEVEL 90 DEGREE DRYER TRANSFER		DATE:	
SHEET: SHEET#2 of 2		PART No:		SCALE:		DWG No: 150-15	
WHERE USED OR NEXT ASSEMBLY		SHEET:		LEVEL: D		REV: A	