
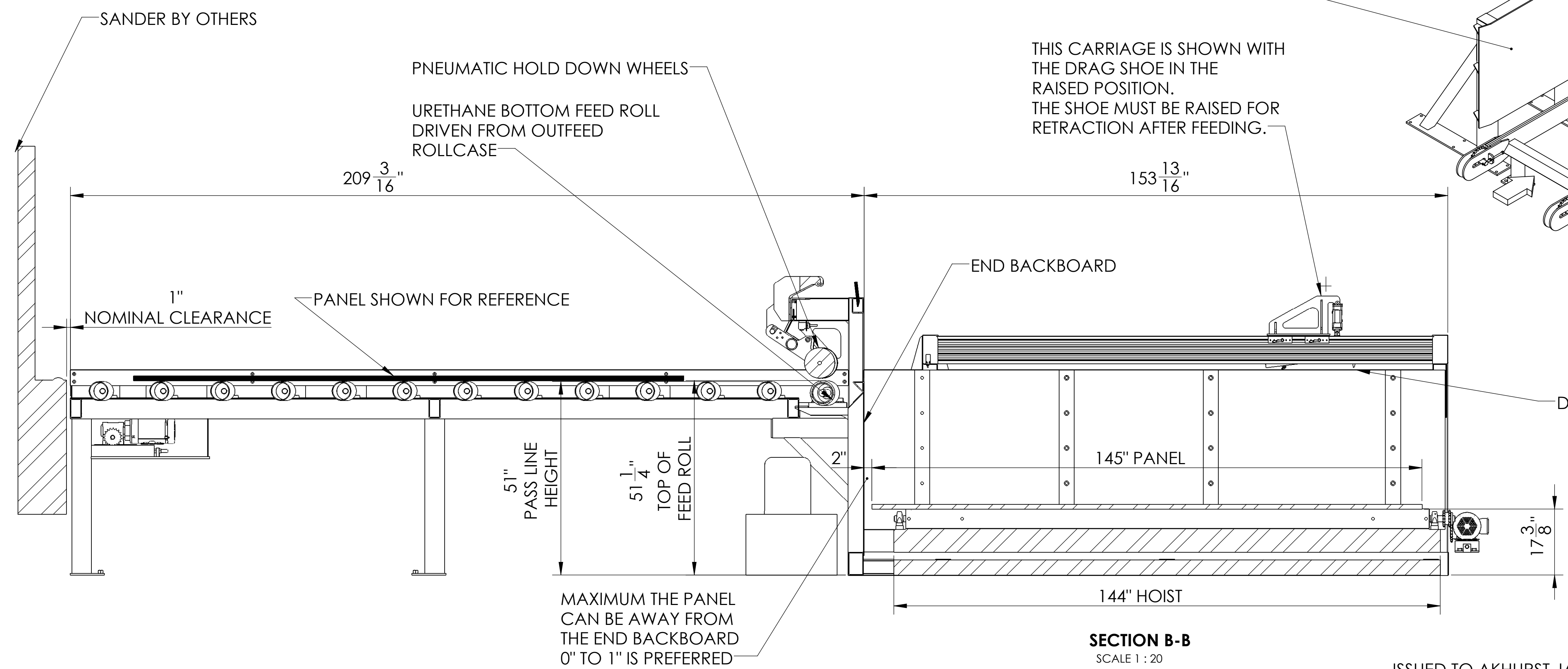
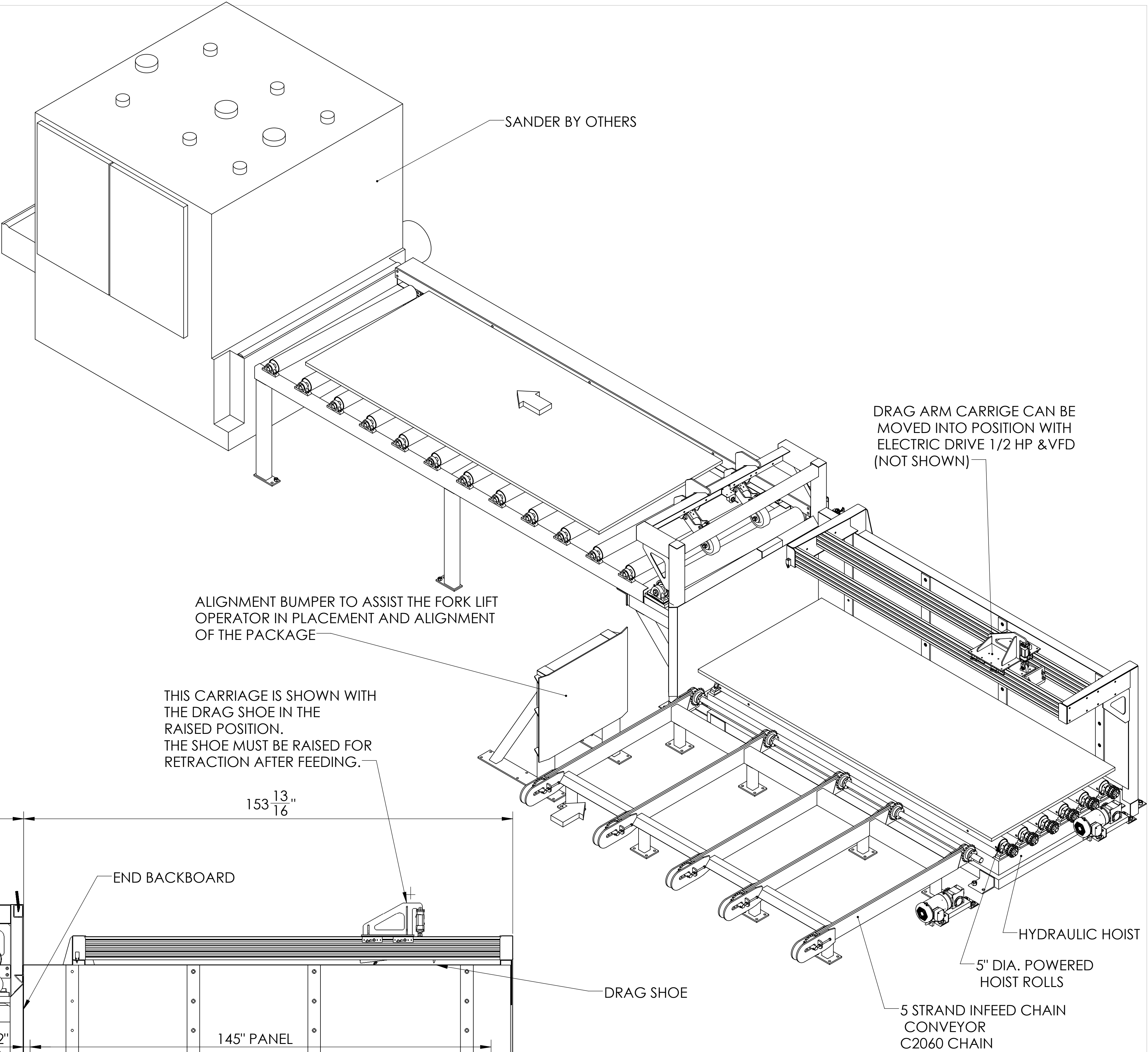
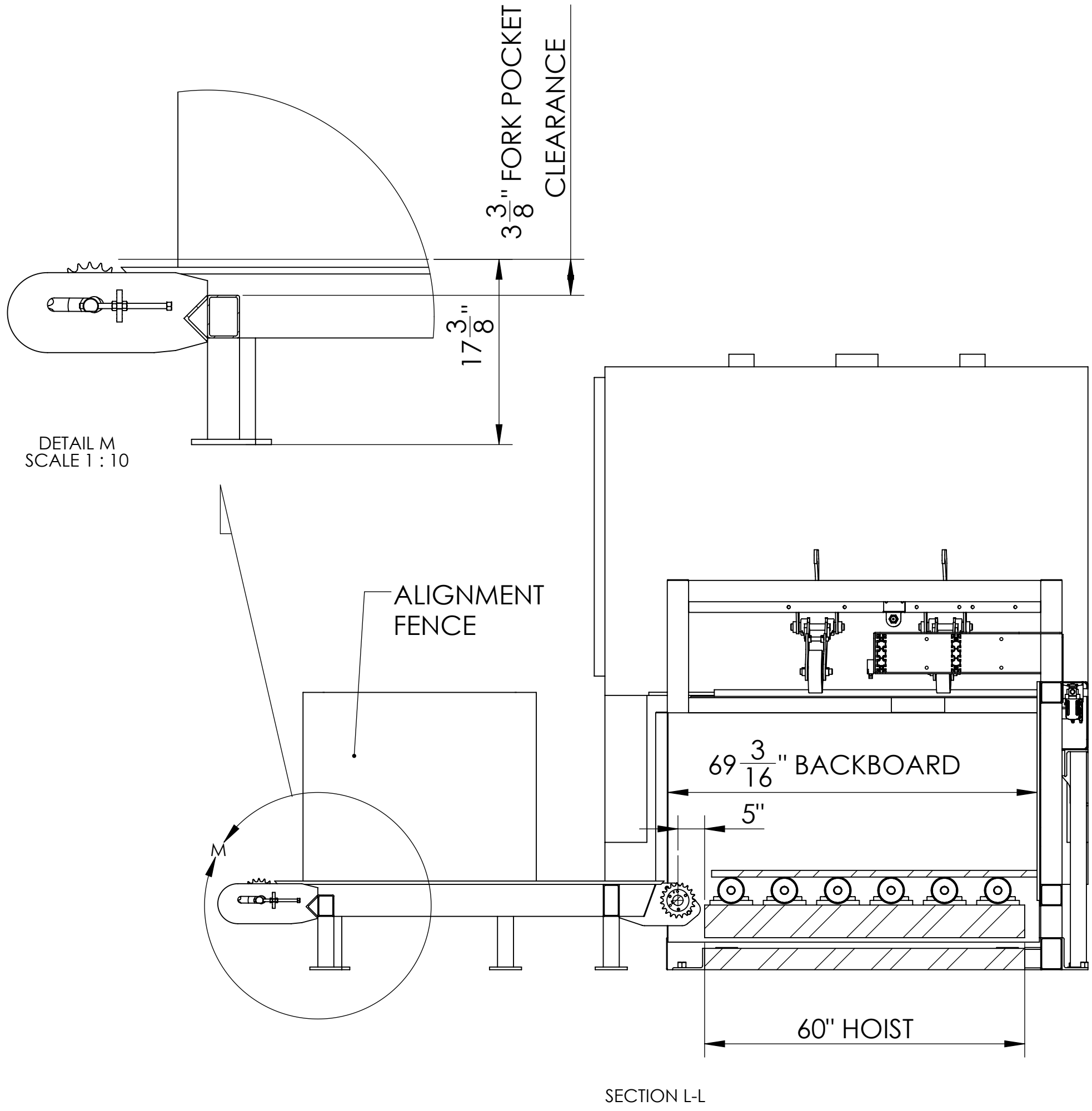


CANTEK AKHURST MACHINERY SYSTEM

DRAWN: Ron Howarth	
CREATED: Saturday, August 18, 2012 7:07:25 AM	
MODIFIED: Thursday, January 28, 2016 9:48:29 AM	
MATERIAL:	
WEIGHT: lb	
CHECKED BY:	
UNLESS OTHERWISE SPECIFIED: NO NOT SCALE DRAWING DIMENSIONS ARE IN INCHES ANGULAR: ±0.5° FRACTION: ±1/16 TWO PLACE DECIMAL ±.005 THREE PLACE DECIMAL ±.0005 REMOVE ALL BURRS, BREAK EDGES (30S TO .015, MACHINING SURFACE ±.002 250 MICRO INCHES	
MODEL DAF-60-145 DRAG ARM PANEL FEEDER, GENERAL ARRANGEMENT ITEM NUMBER:	REV: 01
SCALE: 1:20	SIZE: D SHEET 1 OF 3



CANTEK AKHURST MACHINERY SYSTEM

DRAWN: Ron Howarth
CREATED: Saturday, August 18, 2012 7:07:25 AM
MODIFIED: Thursday, January 28, 2016 9:48:24 AM
MATERIAL:
WEIGHT: lb
CHECKED BY:

UNLESS OTHERWISE SPECIFIED:
DO NOT SCALE DRAWING
DIMENSIONS ARE IN INCHES
ANGULAR: ±0.5°
FRACTION: ±1/16
// ±.25 TWO PLACE DECIMAL ±.005
⊥ ±.25 THREE PLACE DECIMAL ±.0005
H ±.002 REMOVE ALL BURRS, BREAK EDGES
250 MICRO INCHES .005 TO .015, MACHINING SURFACE

Waycon
Manufacturing Ltd.

MODEL DAF-60-145 DRAG ARM
PANEL FEEDER, GENERAL ARRANGEMENT
ITEM NUMBER:
1001
SCALE: 1:18 SIZE: D SHEET 2 OF 3

REV: **03**