



## UNIVERSAL TOOL REST

555811

---

### SAFETY

#### WARNING

**READ, UNDERSTAND, AND FOLLOW ALL SAFETY INSTRUCTIONS WITHIN THIS LITERATURE, AND ALSO ALL SAFETY INSTRUCTIONS IN THE MARK V OWNERS MANUAL.**

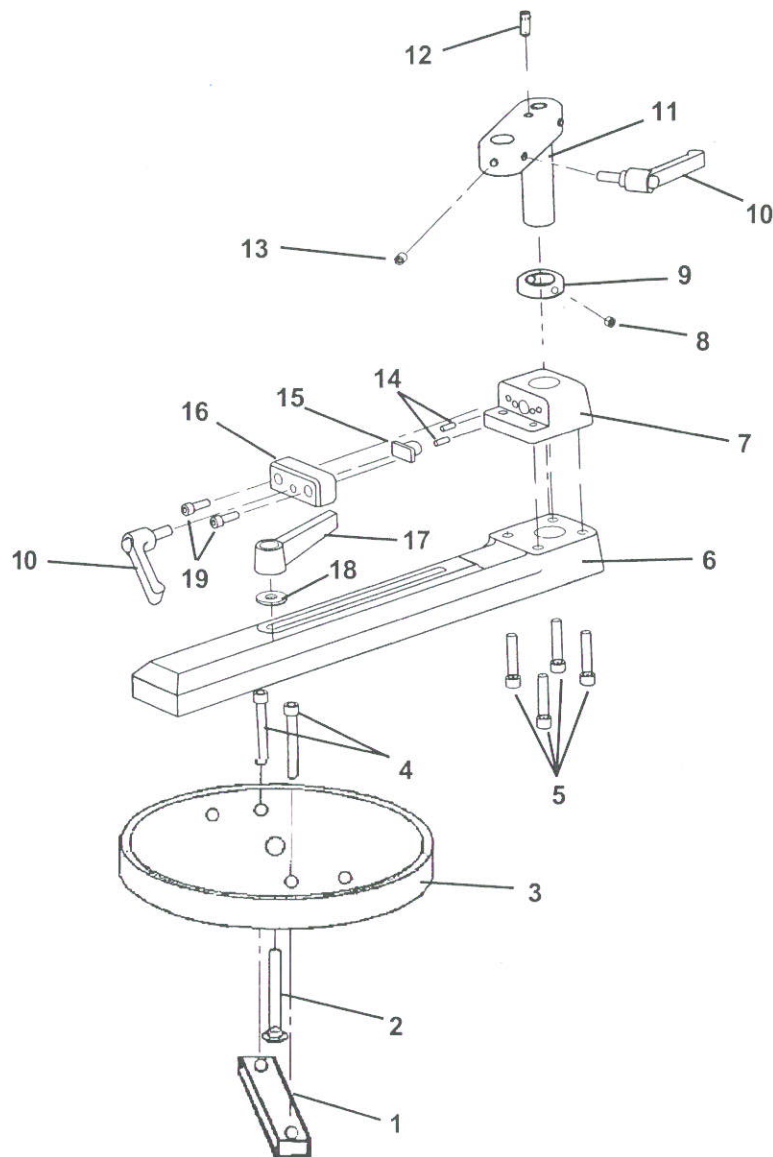
**ALSO, refer to your Mark V Owner's manual for the meanings of WARNINGS, CAUTIONS, AND NOTES.**

**Eye Protection - always wear eye protection when you use power equipment. Use goggles, safety glasses, or a face shield to protect your eyes.**

**Ear Protection - prolonged exposure to high noise levels from high speed power equipment can damage your hearing.**

### LATHE MODE

- **When turning glued up stock, make sure glue joints are strong. Glue the stock and leave it clamped for at least 24 hours prior to turning.**
  - **Never wear jewelry, gloves, ties, loose clothing or clothing with long sleeves. They can become entangled in the stock.**
  - **Pull long hair up and out of the way, or put under a hat. Hair can become entangled in the stock.**
  - **Do not turn stock with splits, loose knots, or other defects that could cause the stock to break, splinter, or come loose while turning.**
  - **Cut stock that is larger than 3"x 3" into an octagon. This removes excess stock and makes turning safer and easier.**
  - **When mounting stock between the centers, the spurs of the drive center and the cup of the cup center must penetrate at least 1/16" into the stock. Do not use a center if the point is damaged. The stock could be thrown from the lathe.**
  - **Wax or Soap the end of the stock that mounts to the cup center. This lubrication helps keep the cup center from wearing into the stock and causing the stock to loosen on the lathe.**
  - **During turning, periodically turn off the machine and check to make sure the stock lathe while it is running.**
  - **Do not lean across or reach underneath the lathe while it is running.**
  - **Do not touch the rotating stock with the tool rest is mounted.**
  - **Round all stock at "Slow" speed.**
  - **Feed the tool slowly into the stock. Hold the tool firmly in both hands and against the tool rest.**
-



PARTS LIST

Ref No.	Part No.	Item Description	Qty	Ref No.	Part No.	Item Description	Qty
-	<b>555811</b>	<b>MKV Universal Tool Rest</b>		12	521790	. Set Screw .....	1
1	521782	. Mounting Plate Bar .....	1	13	102582	. Set Screw .....	1
2	521789	. Carriage Bolt .....	1	14	521791	. Spring .....	2
3	521781	. Mounting Plate .....	1	15	521774	. Shaft Stop .....	1
4	521788	. Socket Hd Cap Screw .....	2	16	521775	. Press Block .....	1
5	502038	. Socket Head Cap Screw .....	4	17	<b>518308</b>	<b>. Handle Assembly .....</b>	1
6	521771	. Support Base .....	1	-	518296	. Special Table Nut .....	1
7	521773	. Top Support .....	1	-	502680	. Retaining Ring .....	1
8	222458	. Set Screw .....	1	-			
9	521777	. Collar .....	1	-	5042559	. Table Tilt Handle .....	1
10	521688	. Handle .....	2	18	120388	. Washer .....	1
11	521794	. Tool Support & Shaft Asm. ....	1	19	513201	. Socket Head Cap Screw .....	2