



**ALL
ABOUT
PEOPLE**

Help and support for you during times of need

A comprehensive range
of health, welfare and
financial support for
less than 20p a day.



ALL ABOUT PEOPLE

people working in public transport...
...people like you!



If need, hardship, or distress should arise, TBF is here to help you, offering a

range of health, welfare, and financial benefits.

A not-for-profit membership charity, TBF embraces everybody in Great Britain engaged in the public transport industry and its related services.

Membership costs just £1.25 per week; that's less than 20p per day, and covers the prime member, their live-in partner and dependent children.

TBF is a registered charity and the fund is governed by a board of trustees, most of who work in the public transport industry, and they decide on all benefits awarded.

Revenue to support the fund is not only raised from the weekly membership contributions but also generous donations from individuals and companies and through charitable events.

Gift Aid donations represent another income stream - the weekly subscription qualifies for Gift Aid if paid through your company's payroll system.

Our patrons include leading figures in the major transport groups and the trades unions.

JOIN NOW!

It is so easy, you can now join online by scanning the QR code below or by visiting the TBF website **www.tbf.org.uk**. Members can personally access their account online via the membership portal. Once logged in, members can update their personal details; contact information; employment status; view their claim history; access their dependants' records and, of course, contact TBF if required. The site is fully secure and operated in line with current GDPR legislation.

It is becoming increasingly popular for membership to be paid for by the employer as part of the employment package; helping to improve members' work-life balance and reducing staff turnover.

TBF has been helping public transport workers for more than 100 years and the needs of today are very much different from those in 1923 but TBF remains your charity, run by people like you.



less than 20p a day...

covers you, your live-in partner and dependent children.

JOIN ONLINE TODAY

www.tbf.org.uk



A WIDE RANGE OF BENEFITS FOR YOU, YOUR LIVE-IN PARTNER AND DEPENDENT CHILDREN

Financial benefits



Hardship grants

intended to relieve hardship where you are off sick (typically for two weeks or more) or hit other unexpected problems.



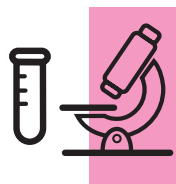
Prescription prepayment certificates PPCs

Medical benefits

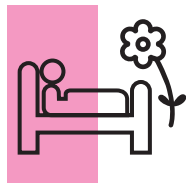


Medical consultations

if the NHS is unable to deliver within an acceptable time frame.



Scans and tests



Convalescence and recuperation



Medical equipment

not available from the State.

Complementary and alternative therapies



Chiropractic and osteopathy



Acupuncture



Chiropody and podiatry



Counselling



Physiotherapy



Homeopathy



Reflexology

Advice and bereavement



Welfare advice



Legal advice

in relation to non-employment matters. (unable to assist with costs relating to property conveyancing).



Bereavement grants

if you or your live-in partner unexpectedly pass away (before State pension age) or the death of a dependent child.

A wide range of complementary and alternative therapies is available, for full details, visit www.tbtf.org.uk



FREQUENTLY ASKED QUESTIONS

? Who can join TBF?

TBF membership is exclusive to those working in the public transport industry in Great Britain.

? How do I pay?

Through your company payroll deduction facility or, if this is not possible, by standing order.

? When would my cover begin?

There is normally no waiting period so your cover begins as soon as your application form has been processed.

? Does TBF pay commission?

No. TBF is a non-profit making benefits provider and we do not pay commission to anyone, so your money goes further.

? Are there different levels of membership fees?

No. Your £1.25 a week is a flat-rate membership fee giving you and your family access to the full range of TBF benefits. (Scans and test, chiropody and podiatry not available to non-working members).

? How much will it cost?

Just £1.25 per week.

? Is there an age limit to join?

No, you can join whatever your age, as long as you're working in public transport.

? How do I seek assistance?

In the first instance you must contact us to obtain the necessary authority for any benefit/help you seek. Once authority has been granted we will send you a claim form. If authority is not sought before making a claim, the benefit may be denied. Our friendly team of advisors will do whatever they can to help. TBF does not have a call centre and no push button options for callers.

? What if I change my job?

You can normally stay a member if you change jobs but you must be working in the public transport industry when you initially join.

? Does TBF make loans?

No, we don't, so any money granted is yours to keep.

? Can I get cover for my family?

Yes, your £1.25 a week contribution covers you, your live-in partner and dependent children. Each family member is considered separately and benefits paid are not cumulative.

? Do I need a medical before I can join?

No. There is no bar on pre existing conditions.

? What happens when I retire?

Normally you can remain a member when you retire and many members qualify for FREE membership.

? Is TBF membership the same as an insurance policy?

No, TBF is a benefits provider and does not sell insurance policies. All benefits are made at the discretion of the Trustees.

? How do I receive my money?

Directly into your bank account via BACS.





TRANSPORT BENEVOLENT FUND CIO

Suite 2.7

The Loom

14 Gowers Walk

London E1 8PY

0300 333 2000

email help@tbf.org.uk

www.tbf.org.uk



Transport Benevolent Fund CIO, known as TBF, is a registered charity in England and Wales, 1160901, and Scotland, SC047016.

THE SMALL PRINT

TBF membership is open to everyone engaged in public transport in Great Britain, at the discretion of the Trustees. This leaflet outlines the main benefits of membership. From time to time we are able to offer new benefits or it may be necessary to vary those on offer. There are some things that we regret we are unable to cover unless there are unusual circumstances. These are: dental, optical, operations, short-term absence from work (generally under two weeks), funeral costs, infringement fines, and things you should have insured against.

TBF Trustees will not tolerate violence or abuse of any kind towards its staff. Any investigation confirming violence or abuse has taken place will trigger immediate expulsion from TBF and may result in criminal charges.

All benefits are granted at the discretion of the Trustees, in accordance with our rules and explanatory leaflets available on our website or on request.

We think you will be pleased with your TBF membership but, if you decide within the first month that it is not for you, you can not only leave TBF but also be refunded the cost of your initial contribution if you have not received any benefit.

© 2024

**SCAN TO DOWNLOAD
AN ELECTRONIC
VERSION OF THIS
LEAFLET**



Registered with
**FUNDRAISING
REGULATOR**