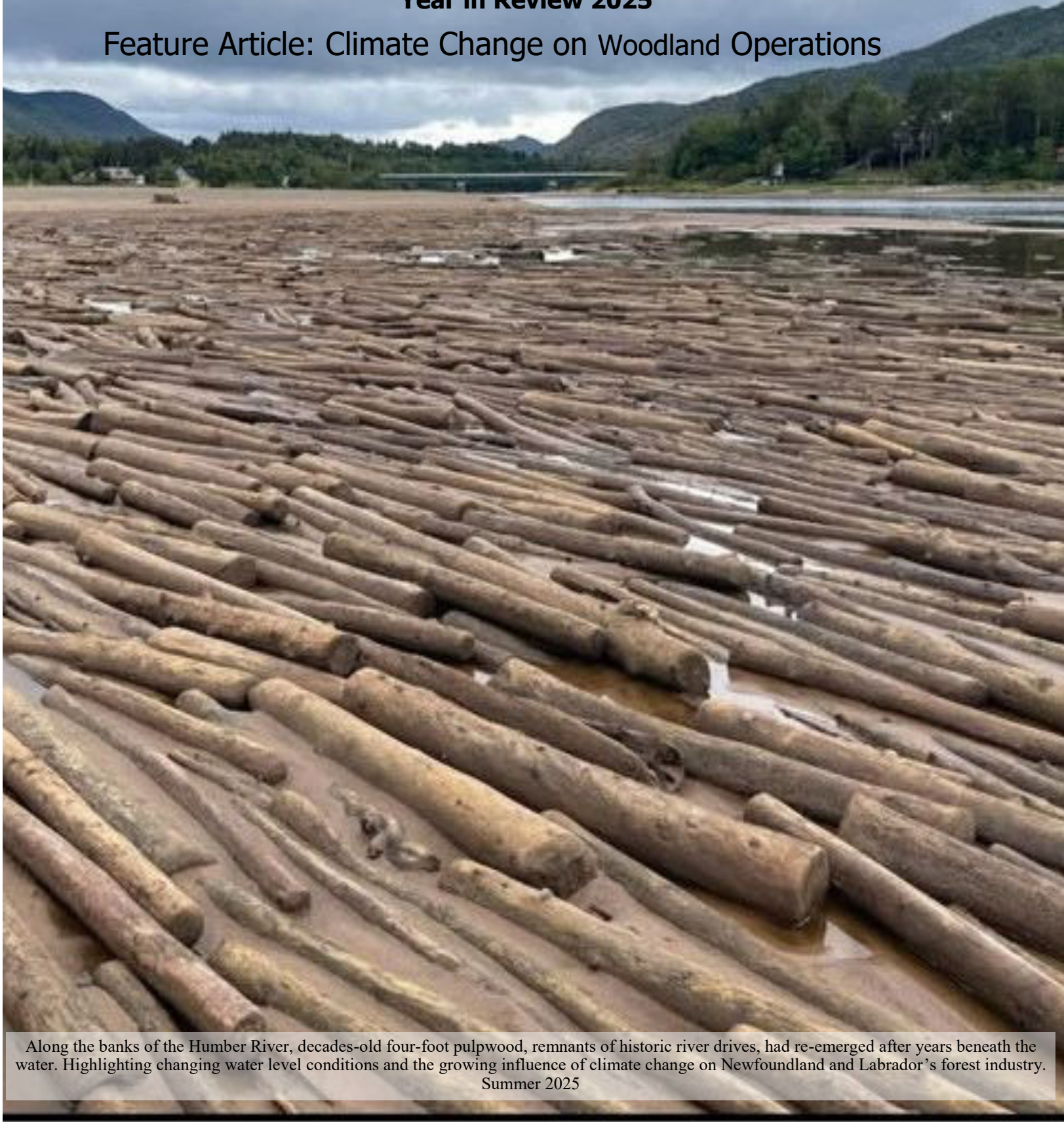


Corner Brook Pulp & Paper Limited Woodlands Division

Environmental Progress Report Year in Review 2025

Feature Article: Climate Change on Woodland Operations



Along the banks of the Humber River, decades-old four-foot pulpwood, remnants of historic river drives, had re-emerged after years beneath the water. Highlighting changing water level conditions and the growing influence of climate change on Newfoundland and Labrador's forest industry.
Summer 2025

Forest and Environmental Policy and SFI Principles

This Forest and Environmental Policy applies to the scope of the environmental management system for the Woodlands Division and the principals of the SFI Forest Management and Fibre Sourcing Standards.

We commit:

To conduct activities in a manner that protects the **health and safety** of our employees and the public.

To practice **sustainable forestry** to meet the needs of the present while promoting the ability of future generations to meet their own needs. This is accomplished by practicing a land stewardship ethic that integrates reforestation and the managing, growing, nurturing and harvesting of trees for useful products, and for the provision of ecosystem services such as the conservation of soil, air and water quality and quantity, climate change adaptation and mitigation, biological diversity, wildlife and aquatic habitats, recreation and aesthetics.

To provide for regeneration after harvest, maintain the health and productive capacity of the forestland base, and to protect and maintain long-term soil health and productivity. In addition, to protect forests from economically, environmentally and socially undesirable impacts of wildfire, pests, diseases, invasive species, and other damaging agents and thus maintain and improve long-term **forest health and productivity**.

To protect and maintain the water quality and quantity of water bodies and riparian areas, and to apply forestry best management practices to **protect water** quality, to meet the needs of both human communities and ecological systems.

To manage forests in ways that **protect and promote biological diversity**, including animal and plant species, wildlife habitats, ecologically and culturally important species, threatened and endangered species and native forest cover types at multiple scales.

To **prevent pollution** and protect key forest resources.

To manage the **visual impacts** of forest operations and to provide **recreational opportunities** for the public.

To manage lands and **special sites** that are geologically or culturally important in a manner that takes into account their unique qualities.

To meet or exceed applicable federal, provincial and local forestry and related environmental **laws, statutes and regulations**.

To support advances in sustainable forest management through **research**, science and technology.

To improve the practice of sustainable forestry through **training and education** programs.

To set appropriate environmental **objectives and targets**, develop action plans to meet them, monitor progress and regularly review and update them.

To broaden the practice of sustainable forestry on all lands through **community involvement**, socially responsible practices, and through recognition and respect of **Indigenous Peoples' rights** and traditional forest-related knowledge.

To broaden the understanding of forest certification to the Forest Management and Fibre Sourcing Standards by documenting certification audits and making the findings **publicly available**.

To **continually improve** the practice of forest management, and our environmental management system regularly. And to monitor, measure and report performance in achieving the commitment to sustainable forestry.

To use and promote sustainable forestry across a diversity of ownership and management types that is both scientifically credible and socially, culturally, environmentally, and economically responsible to **avoid sourcing from controversial sources** both domestically and internationally.

Geoff Clarke
Woodlands Manager



Gerald Crespeigne
General Manager





Message from Geoff Clarke, Woodlands Manager

Greetings!

Thank you for taking the time to read the annual update of CBPPL Woodlands

in our Environmental Progress Report. Our goal is to give you a clear picture of how we balance environmental, social, cultural, and economic values through long term sustainable forest management. We hope you find this report informative and welcome any further engagement.

As the new Woodlands Manager at CBPPL, I'm pleased to reintroduce myself. Born and raised in Corner Brook, my forestry career has taken me across Canada, the Americas, and the Nordic countries. With undergraduate and graduate degrees in Sustainable Forest Management, Forestry, and Business and experience as a Registered Professional Forester in four provinces, I'm excited to return home and support the revitalization of Corner Brook Pulp & Paper and the modernization of Woodlands.

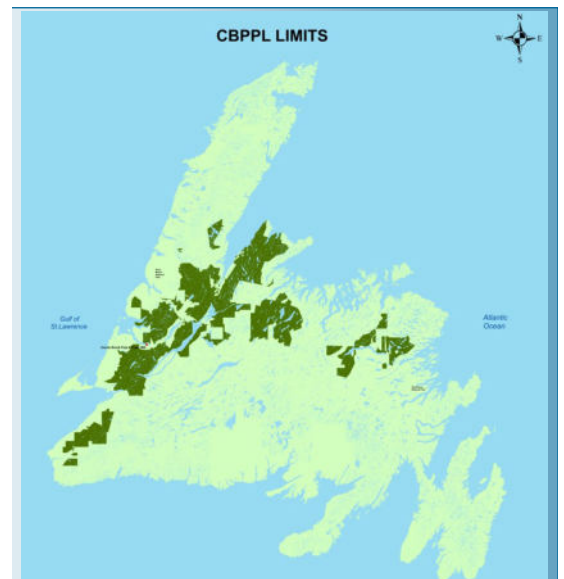
The year 2025 brought several challenges. Markets for traditional forest products remained depressed. Spruce budworm populations increased significantly, drought conditions created extreme wildfire risk, and low water levels in the Grand Lake reservoir forced a temporary mill shutdown. Thanks to the efforts of our trained employees and contractors, our operating areas avoided wildfire impacts, and recent weather has helped restore reservoir levels, allowing mill operations to restart.

Despite these challenges, we also reached important milestones. CBPPL celebrated 100 years in operation and continues to evolve from its early days of manual harvesting and river drives. We achieved a major safety accomplishment in 2025 with zero lost time injuries reflecting strong procedures, training, communication, and a commitment to continual improvement.

We maintained our ISO 14001 and SFI® Forest Management and Fibre Sourcing certifications through annual third party audits. Looking forward, Kruger's \$700 million investment announced in July 2025 will support green energy, modernization, and diversification. For Woodlands, this means advancing technology, reducing waste, and increasing the value of every tree harvested.

Strong forest management has sustained CBPPL for the past century, and innovation, machine learning, and AI will help shape its future. We remain committed to working with all forest stakeholders to support a healthy, resilient forest for generations to come.

Take care, *GC*



The island portion of the province of Newfoundland and Labrador, Canada, is shown here with the dark green shading representing the managed land of CBPPL woodlands division. Forest management within this region is covered under third-party sustainability certifications, ensuring responsible harvesting, environmental protection, and adherence to recognized forest management standards.



On Track
Environmental and Sustainable
Forest Management Systems

Corner Brook Pulp and Paper Limited, Woodlands Division maintains its commitment to Sustainable Forest Management by upholding the standards to three certifications within our woodlands operations; ISO 14001 Environmental Management Standard; Sustainable Forestry Initiative® (SFI®) Forest Management Standard; SFI Fibre Sourcing Standard.

During the first week of June, 2025, CBPPL had a surveillance audit completed on our system.

The registration cycle is over five years with surveillance audits conducted annually. The audit assessed active and completed harvest operations through interviews with the company staff and contractors. The audit also assessed the SFI documentation and records at the company’s office including stakeholder and Indigenous communication.

The SFI program third-party audit was undertaken by Intertek. Intertek is an independent third-party registrar that is accredited by the ANSI National Accreditation Board (ANAB) Standard ensuring the integrity and credibility of the audit process.

Results In 2025

We are pleased to report that CBPPL Woodlands has maintained its certification to all standards.

There were 6 minor nonconformances reported from the 2025 spring audit. All prior nonconformities were closed.



Theme	Standard	Performance Measure and Indicator	Findings Minor Non-Conformities
Training Records	ISO 14001	7.2	<ul style="list-style-type: none"> Training records of many forest workers interviewed during the field audit were not available. The frequency at which the qualified logging professionals shall take continuing education training to maintain their QLP status has not been defined yet, nor the form that the continuing education training should take.
	SFI FM	13.2.2	
Fuel & Oil Handling	ISO 14001	8.1	<ul style="list-style-type: none"> The system to monitor legal compliance has been unsuccessful in identifying issues related to handling of fuel and oil. Several machines/vehicles on a harvesting contract did not have emergency response equipment required by EMS emergency plan and SOPs available.
		8.2a	
Water Crossings	ISO 14001	9.1.2	<ul style="list-style-type: none"> The system to monitor compliance of water crossings installation (temporary and permanent crossings) is deficient and not consistently implemented Some non-NTS brooks have been observed without a no-grub-zone, which could lead to sedimentation reaching the brook via the ditched
		9.1.2c	
	SFM FM	3.1.1	

A **Minor Non-conformity** is a small deviation from a requirement that does not compromise the overall effectiveness of the management system. It typically reflects an isolated lapse in implementation or documentation and requires corrective action, but does not indicate a systemic failure.

From these findings, corrective actions have been implemented to address the nonconformities identified. The next audit of our system is scheduled for the week of April 13th 2026, at which time the effectiveness of these corrective measures will be evaluated to ensure full conformance.

Also, fall of 2026 the ISO 14001 certificate is at the end of its 5-year cycle. Our scheduled April audit on ISO 14001 will be a recertification.



Field Audit Spring 2025 on Contractor Black Star in Taylors Brook operating area, up the Northern Peninsula



SFI auditor Francois Grimard talking to trucker Duke Noble



Auditor Francois Grimard & Woodlands Superintendent Trevor Kinden breaking for lunch on Silver Mountain Bridge, Upper Humber.



Curious young moose on the road in Taylors Brook

PEFC Chain of Custody Audit

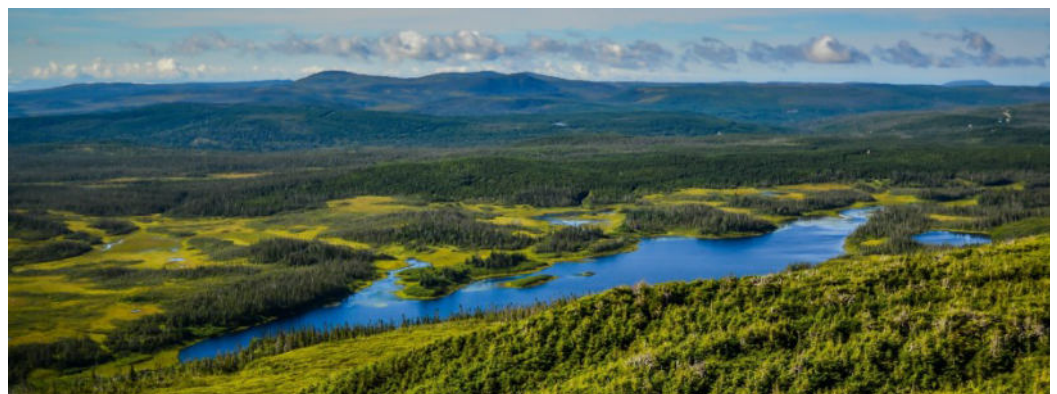
Fall 2025 CBPPL had our Programme for the Endorsement of Forest Certification (PEFC) Chain of Custody onsite audit. Once again it was confirmed that we have a strong fibre tracking and recording system. There was no non-conformities identified during this audit.

The PEFC Chain of Custody program at Corner Brook Pulp and Paper Limited focuses on the tracking and verification of fibre as it arrives to the mill yard. From this point forward, fibre volumes, claims, and documentation are carefully tracked and controlled throughout production to ensure the certified content in our final product (newsprint) is accurate and fully traceable.

The strength of our Woodlands certifications, strongly supports the PEFC Chain of Custody process and is a key piece in our Certification. Responsible fibre procurement, supplier certification, and clear documentation at harvesting levels provide the verified foundation that allows mill-side tracking to function effectively and confidently.

The audit outcome reflects coordinated effort across woodlands, scaling, procurement, production, and shipping teams, ensuring accountability at every stage from delivery to finished newsprint.

As well, our PEFC Certification is maintained as part of a multi-site certification framework, aligning our mill systems with broader corporate oversight and standardized procedures.



CHAIN OF CUSTODY CONTINUES INTO THE PAPER MILL

Once fibre is registered received at Corner Brook Pulp and Paper...

- Controls the intake and chipping process of round wood
- Controls the intake of chips from outside sources

WOOD ROOM

- Thermal mechanical processing separates the fibres for pulp stock

TMP

- All paper at CBPPL is made with controlled virgin fibre from the Island of Newfoundland
- Rolls are tracked by a code attached as it comes off the winder.
- Code is then put on wrapped roll

PAPER

- Rolls can be tracked back to fibre source
- Paper orders are sold on the world market with the CoC certificate

SHIPPING

FIBRE PROCUREMENT POLICY

Kruger has been committed to protecting the environment, as well as the quality of life of its employees and the well-being of the communities where it operates. Our environmental, forestry and wood fibre procurement policies are a testimony to our commitment to sustainable development.

Kruger shares important responsibilities with all communities with regard to their living and work environments. The company favors sustainable forest ecosystem Management, as well as the responsible use of natural forest resources.

Kruger will make its best effort to ensure that its wood fibre is sourced from forests where management practices comply with the requirements of recognized forest certification standards, such as FSC®, SFI, PEFC and CSA 2008, and that wood fibre is not sourced from conflict timber or from controversial sources, such as:

- illegally logged forests;
- genetically modified trees;
- high conservation value forests that are threatened by forest industry activities;
- areas where civil or traditional rights under laws, agreements or treaties recognized by governmental authorities are violated;
- (natural or primary) forests being converted to plantations or non-forest uses; and
- areas where any ILO Core Conventions, as defined in the ILO's 1998 Declaration on Fundamental Principles and Rights at Work, are violated.

Kruger further undertakes to maintain control measures to ensure its customers that the forest products it produces contain no fibres obtained from controversial sources and that they meet the strictest environmental requirements.

In support of this commitment, Kruger shall provide the human, material and financial resources needed to administer, and comply with, this procurement policy at each of its subsidiaries.

Joseph Kruger II
Chairman of the Board and CEO

Eric Abbey
Executive Vice President and Chief Operating Officer



Corner Brook Pulp and Paper Limited Woodlands

- SFI - Sustainable Forestry Initiative® Forest Management Standard
- SFI - Sustainable Forestry Initiative® Fibre Sourcing Standard
- ISO 14001 International Standards Organization Environmental Management System

Corner Brook Pulp and Paper Forest and Environmental Policy

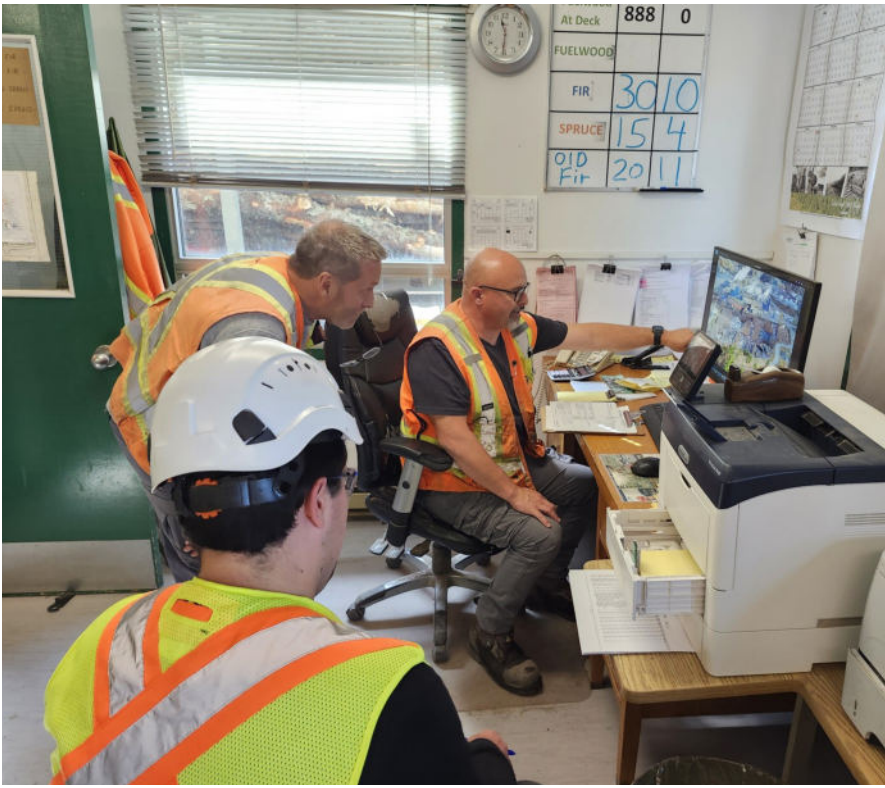
What it means to me:

P Protect our environment

U Utilize our natural resources

L Leave wildlife trees

P Preserve for future generations



CBPPL Woodlands Scaler Chris Curnew orientating a new wood truck driver to the CBPPL yard.

During the 2025 audit, auditor Tyler Doucet recorded two Good Management Practices (GMP) on the report.

The first one being the new driver orientation; during the orientation new drivers are shown how to use the safe unwrapping station, the check-in system, told about driver amenities, informed about safe travel routes, communication, and PPE for the yard site.

The second GMP was supporting the province's scaling training in the mill yard. The Scaling practical takes place in the mill yard with the CBPPL Woodlands Scaling team setting up the wood scaling teaching layout.



WHAT TO DO WITH USED OIL

Protect our environment.

DO THIS: Proper Management of Used Oil



Store Safely:
Use leak-proof, clearly labeled containers in a secure area with secondary containment (spill trays or berms).



Label It Right:
Clearly label containers: **"USED OIL – DO NOT DUMP"**



Prevent Spills:
Keep lids closed. Do not mix used oil with antifreeze, solvents, gasoline, or any other contaminants.



Dispose Responsibly:
Take used oil to an approved Used Oil Collection Facility or arrange for a pickup by a licensed waste oil hauler.

No Illegal Disposal



NO dumping on the ground, down storm drains, or in water
→ It's illegal and causes serious environmental harm.



NO burning used oil in heaters or equipment.



NO open-air burning.
Violates the Environmental Protection Act and can result in fines or prosecution.

DID YOU KNOW?

1 litre of used oil can contaminate 1 million litres of water.
Improper disposal is a criminal offense



Kruger
Pulp and Paper

COMPLIANCE = CLEAN OPERATIONS

This site follows all used oil Control Regulations under the Environmental Protection Act

MOBILE Fuel Tank Awareness Program — Harvesting Operations

Know your tank. Follow the rules. Protect our land.

TANKS 450 LITRES OR LESS

Regulatory Framework:

- Environmental Protection Act—Used Oil Control Regulations

Requirements:

- Clearly labeled with fuel type and "Combustible"
- Must be in good condition (no leaks or rust)
- Secondary containment not required, but recommended
- No registration required if per Service NL, but best practice to track

TANKS OVER 450 LITRES

Regulatory Framework:

- Registered with Service NL
- Requires a certified (e.g., ULC approved for mobile fuel use)
- Valid registration tag and certificate
- Spill kit on-site
- Secondary containment berm or spill tray) when stationary
- Subject to inspection by Service NL
- Operated by TDG Certified employees

ALL TANKS MUST:

- Be inspected regularly for leaks or defects
- Be located 100 metres away from water courses and outside protected zones
- Operated by trained personnel
- Have fire extinguishers nearby
- Grounding during fuel transfer to prevent static ignition
- Nozzel in holster

NEED HELP?

- Contact your Supervisor
- Review CBPPL Fuel Handling SOP
- Check NL GAP Guidelines

CBPPL is committed to safe, compliant, and environmentally responsible fuel handling in all forest operations.

RIGHT TANK. RIGHT USE. RIGHT WAY. Kruger Pulp and Paper

ZERO HARM
SAFETY FIRST, SAFETY ALWAYS!



Operator Victoria Pittman practicing fire extinguisher usage after a classroom training session

Fire Management: A SEA Program Under ISO 14001

In CBPPL Woodlands fire is a key environmental consideration. Under our ISO 14001 Environmental Management System, fire is treated as a Significant Environmental Aspect (SEA), meaning we actively identify, monitor, and manage all activities that could impact the environment through fire.

Being a SEA program guarantees that fire prevention and response aren't just reactive measures; they are integrated into everyday operations. From tracking potential ignition sources to controlling fuel on the forest floor, every step is designed to reduce environmental risk while safeguarding our people and surrounding communities.

ISO 14001 requires us to evaluate each SEA for potential impacts, develop mitigation plans, and measure effectiveness over time. For fire, this includes seasonal planning, equipment inspections, employee training, and coordination with local authorities. The program ensures that we're prepared, proactive, and continuously improving.

Ultimately, treating fire as a SEA reflects our commitment to sustainable operations. By systematically managing fire risks, we protect both the natural landscape and the long-term productivity of our forest operations-keeping safety and sustainability at the core of everything we do.

Update on SEA Fire program 2025:

The Fire Significant Environmental Aspects (SEA) program ran through the 2025 season. It helped track and understand possible contractor gaps and ensure that contractors were prepared across the land base.

Tracked engagement included: Tool box discussions, fire suppression audits, Emergency Response Tests with fire themes, fire near miss reviews, fire pump testing.

This year we also added cabin owner outreach packages to the program. These packages are based around the FireSmart program and were handed out to cabin owners in harvesting and road construction areas across the DFA. A total of 22 packages were handed out at cabins around our operating areas in 2025.

FOREST FIRE AWARENESS
For Cabin Owners and Land Users on CBPPL's Managed Land Base

Why It Matters
Corner Brook Pulp and Paper Ltd. (CBPPL) is committed to protecting the forests we all rely on - for recreation, wildlife, and the future of our communities. As cabin owners and land users, your awareness and actions play a key role in preventing forest fires.

Our Commitment to Sustainable Forestry
CBPPL manages the land base with care and responsibility. We are proud to be certified to:

- ✓ SFI® Forest Management Standard
- ✓ SFI® Fibre Sourcing Standard
- ✓ ISO 14001 Environmental Management System

Help Us Protect the Forest

- ✓ Follow local fire bans and restriction
- 🔥 Use fire pits or stoves safely
- 🚨 Report any signs of fire immediately
- 👤 **Report a Wildfire:** 1-866-709-FIRE (3473)
- 🔥 Never leaves a fire unattended
- 👤 Share this information with others

Together, we can reduce the risk and impact of forest fires.
Let's keep our forests safe, healthy, and sustainable for generations to come.

FireSmart Canada

FIRESMART BEGINS AT HOME GUIDE

Photo: 2025 FireSmart Canada. All rights reserved. Photo: The Ontario Fire Service (OFS)

Fire Near Miss from the summer: An example of quick action by workers

Exert taken from the EMS Environmental Incident Report Files:

There was a spark from a bar tip that landed on a cut green spruce. The harvester operator noticed the spark, waited and didn't see any smoke; traveled to the road to get a new bar. Forwarder operator seen smoke and alerted the rest of the crew on site. A back tank & 4 fire extinguishers were deployed to douse around the area. The forwarder tore the stump up from the ground to make sure the fire was out. A fire watch was put in place to ensure no flare ups until the Forestry Department showed up to take over.

Corner Brook Mill

Kruger Pulp and Paper

Corner Brook Pulp and Paper Limited
P. O. Box 2001
Corner Brook, NL A2H 6J4
Tel: 709 637-3000
Fax: 709 637-3469

To: Lovell's Logging Ltd.
July 17, 2025

Subject: Commendation for Lovell's Logging – Quick Action Prevents Wildfires

We would like to extend our sincere appreciation to the crew at Lovell's Logging for their prompt and professional response to a fire that occurred on their operation earlier this week.

Thanks to your fast action and preparedness, the fire was quickly contained before it could spread behind control and cause further damage. This incident is a valuable reminder of the importance of having fire suppression equipment in place, conducting regular safety checks, and ensuring that all personnel are trained and feel confident in their ability to respond to an emergency event.

Once again, on behalf of the woodlands department, thank you to Lovell's Logging for your leadership in fire safety. Your quick thinking helped prevent what could have been a much more serious incident.

Let's all continue to remain vigilant, especially during heightened fire risk periods.

Stay safe,



Corner Brook City Wildfire Resiliency Plan (CB CWRP)

The Woodlands Division at CBPPL are one of the stakeholders and working group members activity working towards a Corner Brook City Wildfire Resiliency Plan (CB CWRP).

Corner Brook is one of three communities in Canada selected by the Canadian Inter-agency Forest Fire Centre (CIFFC) and FireSmart Canada to pilot the development of a national Community Wildfire Resilience Plan template. The project began in fall 2025 and focuses on completing a detailed local wildfire risk assessment and analysis, which will both guide Corner Brook specific resilience plan and help refine a standardized template for use by communities across Canada.

The pilot is designed to:

- Assess wildfire hazards and exposure based on Corner Brook’s unique landscape and conditions
- Identify priority risk areas and mitigation needs (fuels, wildland-urban interface, preparedness, etc)
- Develop a locally tailored plan to reduce wildfire risk and improve readiness
- Test and improve the national planning framework so it can be applied elsewhere

This project is a good fit for CBPPL Woodlands Division participation because the forested land base surrounding and overlapping the city of Corner Brook’s planning zones are a part of managed forest land base for the local Corner Brook Pulp and Paper mill, under Kruger.

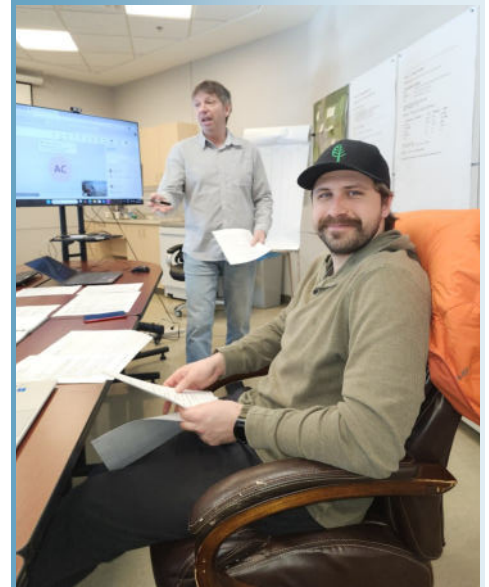
The Kruger land base around the city has forest fire education and awareness programs that are ran as part of the requirements of environmental certifications of ISO 14001 and the Sustainable Forestry Innovative (SFI) Forest management standards under the Kruger Woodlands division. These programs make up a large part of the community outreach initiatives that the department has been focusing on during the provincial fire season.

This plan assesses wildfire risk and ways to reduce risk within the municipal boundary of the City of Corner Brook. The work is expected to produce a completed plan and finalized City Plan and template by the end of April 2026.



Wildfire Community Preparedness Day - FireSmart

Is observed annually on the first Saturday in May, with community events typically held throughout the wildfire season.



Corner Brook City WRP Meeting

Background: Joe Russell - CIFFC Project Lead (past NL gov. provincial FireSmart specialist)

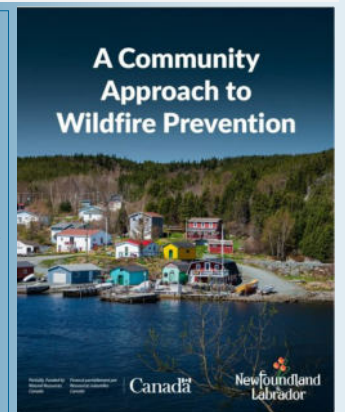
Foreground: Dylan Rumbolt - Wildland fire risk reduction & mitigation Special Project Officer NL Gov.

Meeting have been taking place bi-weekly working with a vast array of stakeholders.

The success at this table will be used Provincially to support and inform the governments 'Community Approach to Wildfire Prevention' projects.

Deadline to apply March 16th, 2026

Project scope includes Community Reliance Plan Support and physical fire prevention measures such as fuel control & fire breaks



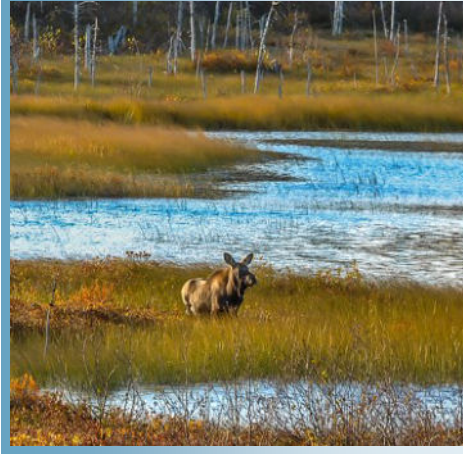


Significant Environmental Aspects

- GHG Emissions & Climate Change**
Soil Disturbance – Transportation of Round Wood
- Fire**
Forest Fire
- Release to Water and Land**
Fuel Spill – Garbage – Water Quality
- Natural Resources Management**
Fibre Recovery – Fibre Utilization – Visual Quality



Crew Support (Gofer) Meril Noble with Three Rivers



Long time contractors Doug and Kathy Cook, of Three Rivers Silviculture, with their crew, as well as Dave Armstrong, Silviculture and Scaling Supervisor in our Woodlands Department, and summer student Sam Stuckless.

Safety First: Annual Drill Keeps Crews Prepared

On June 25, Three Rivers Silviculture, longtime contractors of Corner Brook Pulp and Paper’s Woodlands Division, carried out their annual emergency preparedness drill. This exercise is a key part of Kruger’s Environmental Management System and supports multiple certifications tied to operations on Kruger-managed lands.

The drill included a test of the local “Report Wildfire” phone line and a briefing from the Provincial Forestry Office, which covered fire weather index ratings and expected response times for aerial support and ground crews to the location.

During fire season, all contractors working in the woodlands must hold a valid operating permit and specific fire suppression equipment on site. Provincial legislation also requires them to report any fire and begin fighting it immediately using all available resources until relieved by forestry officials or the fire is extinguished.

As Kruger’s only dedicated silviculture crew, the proud crew at Three Rivers Silviculture plays a vital role in forest renewal, planting an average of 2.1 million trees each year across the Kruger land base. Their commitment to safety and sustainability helps protect both people and the environment.



Jane-Way Children's Hospital Log-A-Load fundraiser through the CIF
Each year CBPPL Woodlands puts in a team to help support this great cause!

Snags: Vital Habitat in Our Woodlands

Sustainable forest management includes landscape planning and ecosystem awareness. We leave snags (standing dead trees) on the landscape to support species diversification. These snags are essential for species at risk, including owls, woodpeckers, and bats, thus providing nesting cavities, roosting sites, and hunting perches.

By retaining priority snags across our land base and planning for future legacy trees, we help maintain forest biodiversity while supporting responsible forestry. Ecological stewardship and forest operations do thrive together with a work force that are activity involved and committed in the health of our forest ecosystems.



Large yellow birch are retained during harvesting helping preserve legacy trees that support wildlife habitat and long-term forest diversity



Mapping Newfoundland's Breeding Birds

The Newfoundland Breeding Bird Atlas, led by Birds Canada, is mapping where birds breed across Newfoundland. The Forest Planning department has been activity involved, helping place bird recorders and providing area maps on the land base. Launched in 2020, the five-year project is now in its final field season, with full results and an interactive online atlas coming soon-offering the most complete picture yet of Newfoundland's breeding birds.



Did you know? Most owls don't dig their own nests. They rely on snags and tree cavities left behind by woodpeckers or natural decay. Leaving just a few standing dead trees can make the land base a safe home for this species.

Retaining white pine helps conserve seed sources and supports the long-term presence of this iconic species on the landscape. Woodlands Planner Jerome Compton



Spring Roads Meeting

Building Better Forest Roads: CBPPL Woodlands Takes Part in Resource Roads Training.



Allen Bradley and Papa-Masseck Thiam of FPInnovations talking to the group

FPInnovations

Is Canada's national forest sector research organization, delivering applied science and technology to improve the performance, sustainability, and competitiveness of forestry and forest products.

It is a not-for-profit research and development organization with research labs in Montreal, Quebec City, and Vancouver and technology-transfer support across Canada. FPInnovations collaborates with industry, governments, and partners to develop innovations, solve operational challenges, and move new technologies into real-world use.

The end of April CBPPL Woodlands team took part in a two-day Resource Roads Training program organized by the NL Government Forest Engineering and Industry Services Division, in partnership with CBPPL Woodlands, and FPInnovations. The session brought together a diverse group of resource professionals to strengthen knowledge, share best practices, and take a hands-on look at the infrastructure that supports safe and sustainable operations.

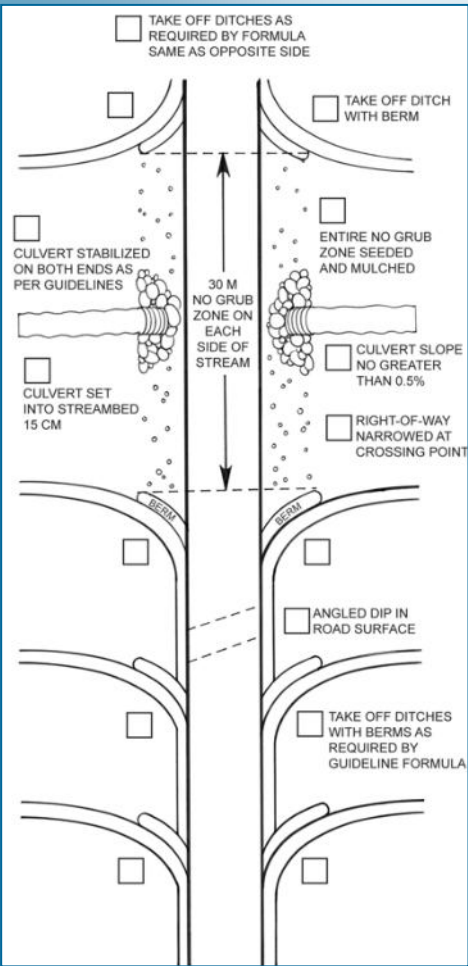
The program combined classroom instruction and technical presentations with field visits to both the Kruger land base and nearby Crown land. Participants reviewed road conditions, and explored practical approaches to managing resource road networks across different operating environments.

A key highlight was the Forestry Engineering department's introduction of a new ArcGIS Field Maps application for bridge inspections. The mobile tool is designed to improve efficacy, consistency, and real-time reporting in the field-which is a huge step up from paper inspections and manual inputting, across the vast land base of Newfoundland and Labrador. Participants applied the technology during inspections of multiple bridge types, including panel bridges, purpose-built structures, and traditional wooden bridges, gaining hands-on experience with the system and reinforcing the importance of accurate infrastructure monitoring.

The training underscored the critical role that well-planned and well-maintained transportation systems play in supporting safe access, operational efficiency, and responsible resource management across Newfoundland and Labrador. It also highlighted the value of strong partnerships and shared learning among government, industry, and technical organizations.

In true Newfoundland & Labrador spring fashion, the experience came with a full range of weather. Participants froze through the first day and returned home with sunburns after the second!

By participating in initiatives like this, CBPPL Woodlands continues to support continuous improvement and collaboration across the operating areas.





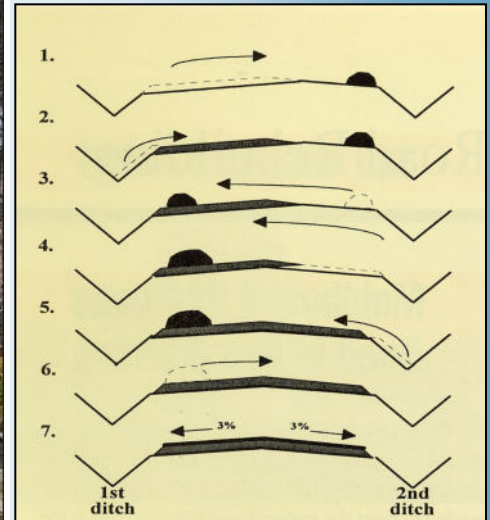
Looking at a culvert install location for a stream crossing through a buffer zone. Right-of-way cutting for roads in these areas needs to be narrowed in, and often leads to soft spots on the road surface.

Also note in the picture: Buffer zones for National Topographic Services (NTS) water ways are 30 meters no cut zones and no grub zones on each side of the high water mark. Historically these zones were Pre Commercially Thinned right up to the water line. This has left this strip of wood prone to blow down without an in stand structure type.

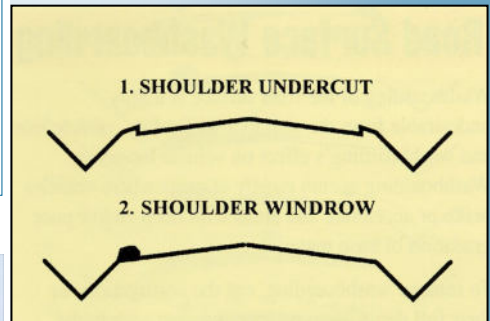


CBPPL Roads Supervisor Lorne Flynn talking to the group about the road subgrade and difficulties of building on shale and loam on the west Coast of NL.

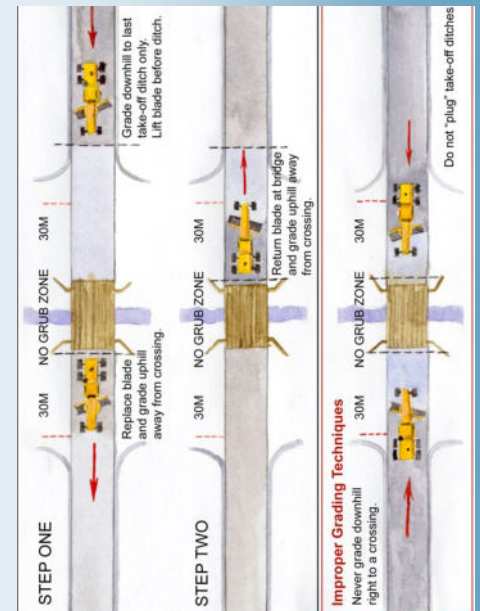
Road Grading



Common Problems



Grading by a Water Crossings



Climate Change Impacts on Forest Operations Across the CBPPL Land Base: Summer and Fall 2025

The impacts of climate change is a operational reality for forest management in Newfoundland and Labrador. Across the CBPPL land base climate conditions are directly affecting harvesting, silviculture, and fibre supply.

From wildfire risk and heat stress to water shortages impacting both silviculture and hydroelectric generation, climate-related disruptions influenced forestry operations from early summer through late fall during 2025. These events reinforce the need for adaptive planning, increases awareness, and long-term resilience strategies within the forest sector.

Fire Weather Index Shutdowns and Harvesting Delays

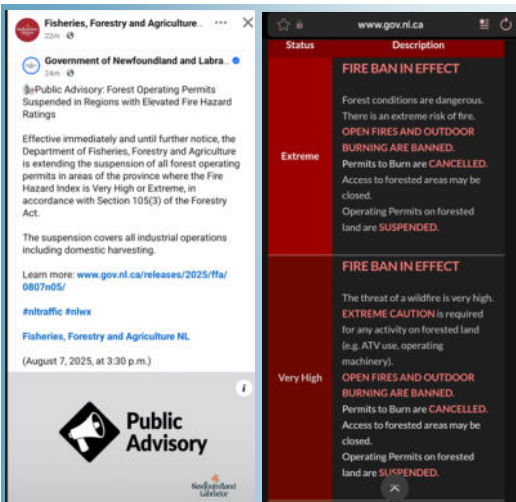
Throughout the summer months, elevated Fire Weather Index (FWI) ratings led to multiple harvesting shutdown across the province. Prolonged periods of warm temperatures, low precipitation, and drying fuels increased wildfire risk to levels that required operational pauses to protect workers, infrastructure, and forest values.

These shutdowns reduced available operating days for harvesting contractors and compressed production into shorter windows. In some areas, crews were unable to access planned blocks for extended periods, creating scheduling challenges and knock-on effects for fibre flow to the mill. The frequency and duration of FWI related shutdowns this season were notably higher than historic norms, highlighting a growing trend of climate-driven fire risk in Newfoundland and Labrador. A province not traditionally associated with sustained wildfire pressure.

Heat Stress and Silviculture Planting Pauses

Silviculture operations were also affected by extreme weather conditions. During peak summer months, high temperatures and dry site conditions forced pauses in tree planting activities. Elevated heat increases the risk of seedling mortality and reduces planting success, particularly on exposed or shallow-soil sites.

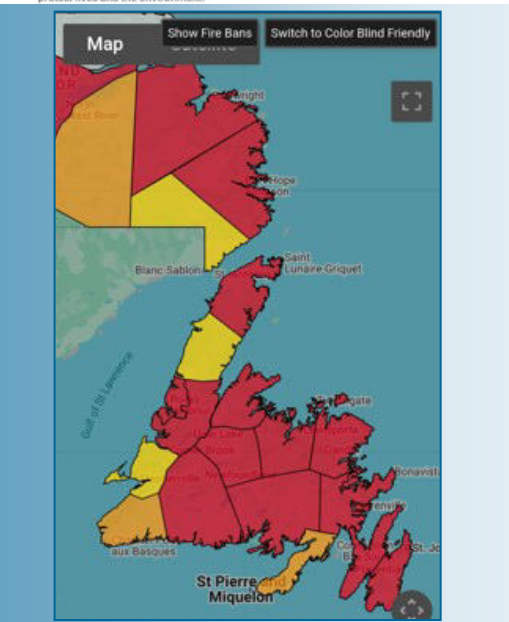
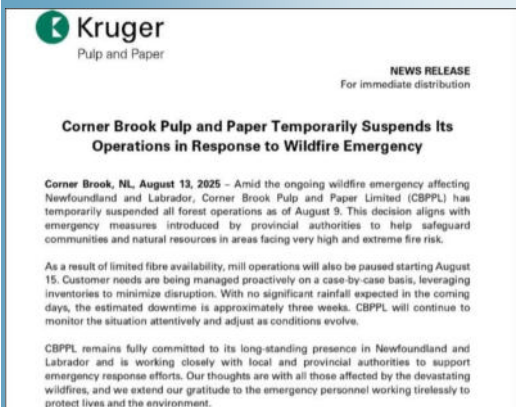
As summer heat events become more frequent and prolonged, silviculture scheduling will increasingly need to account for temperature thresholds, soil moisture availability, and seedling resilience.



August 7th first group of CBPPL Woodland Contractors shut down from FWI.

August 10th Rest of operations shut down.

August 13th memo sent out regarding mill shut due to fibre supply



More weather stations for the provinces FWI monitoring system have been ordered for the 2026 season to allow for increased accuracy across the large zones of the province's land base.

Fall Water Shortages and Harvesting Interruptions

In November, harvesting operations experienced another climate-related interruption. This time it was driven by a lack of water. Persistently low precipitation levels resulted in reduced water availability feeding the Deer Lake hydroelectric system that supplies power to the paper mill. This led to temporary harvesting pauses across the CBPPL land base and a pause in crown wood purchase.

Water availability, once considered a stable input to hydroelectric-powered industrial operations in western Newfoundland, is increasingly variable. Extended dry periods are placing new constraints on both energy supply and the timing of forest operations.

A Visible Indicator: The Humber River

Perhaps the most striking and widely observed indicator of these changing conditions was the water level of the Humber River. During late summer and fall, sections of the riverbed became visible in areas that have not been exposed in decades.

For many residents and forestry workers, this served as a powerful display of the severity of the dry conditions affecting the region. These low water levels were not only symbolic but operationally significant reflecting broader watershed stress that directly influenced hydroelectric generation, aquatic ecosystems, and forest hydrology.

Looking Forward: Adaption and Awareness

The 2025 season demonstrated that climate change is already influencing everyday operations. The Environmental Management System has identified climate change aspects and continues to look at mitigation measures.

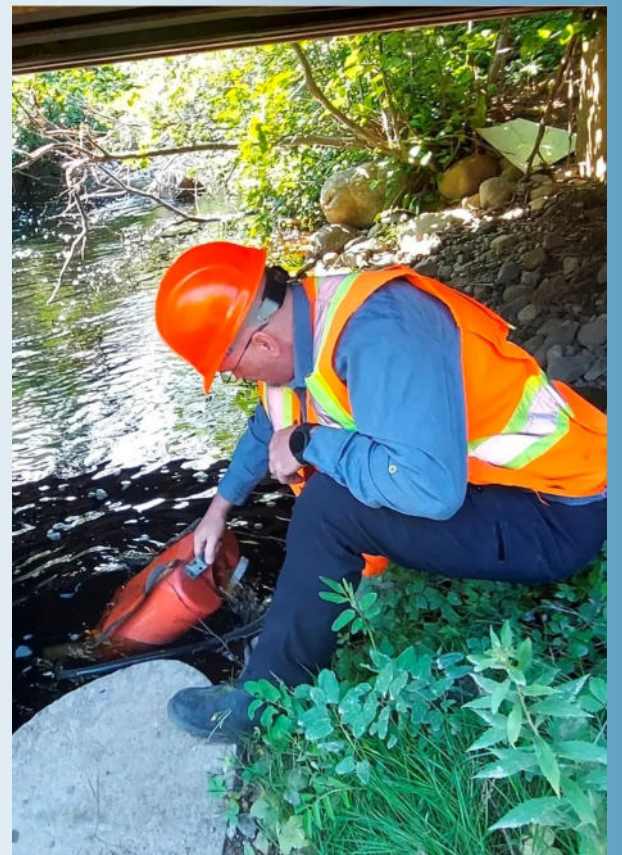
Moving forward, adaptive strategies may include:

- Increased contingency planning for FWI shutdowns.
- Flexible silviculture scheduling and seeding selection
- Enhanced monitoring of water availability and watershed conditions
- Ongoing education and awareness for contractors and staff on climate-related operational risks

Climate change is reshaping how forestry is planned and executed in Newfoundland and Labrador and proactive adaptation will be key to navigating what lies ahead.



Along the banks of the Humber River, decades-old four-foot pulpwood, remnants of historic river drives, had re-emerged after years beneath the water. It highlighted the changing water level conditions and the growing influence of climate change on Newfoundland and Labrador's forest industry.



Site Supervisor Jeff Decker filling up a Water Back Tank used for Class A fire preparedness during summer operations.

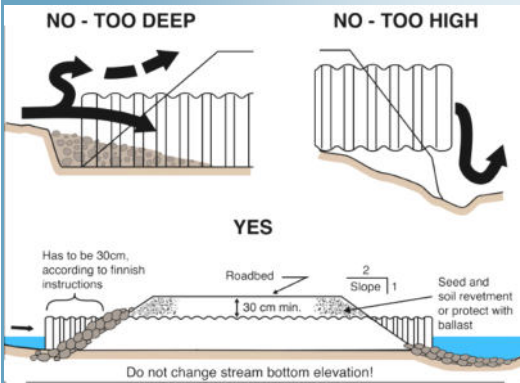


Harvester Operator Rick Terry taking part in an emergency response training during climate related shut down.

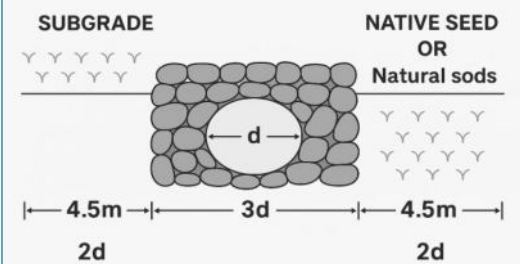
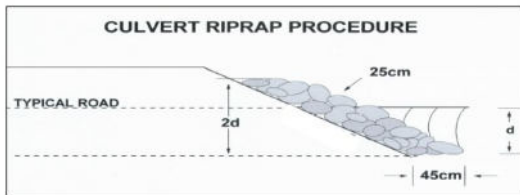
By setting off old fire extinguishers, personnel obtain the muscle memory needed to respond quickly in a real event.



Culvert Installation Guidelines



Never have a ditch line run directly into a water course



Harvester operator Dean Pilgram following the flow of round wood during the CBPPL mill tour

Woodlands Training Blitz and Site Tours

During the November paper production shut down, Woodlands Operators stayed employed through a training blitz. For 3 weeks, personnel updated their training in courses such as First Aid, Powerline Safety, Environmental Awareness, and Respectful Workplaces. As well, they were given the opportunity to tour the Pulp and Paper Mill and Deer Lake Power Plant, Burtons Cove Logging & Lumber Ltd., sawmill and Sexton Lumber Co. Ltd. sawmill. A lot of the operators who cut wood for the mill had never seen the other processes and infrastructure that make the industry run.



Union Trucker Charles Harding getting a birds eye view of the CBPPL mill yard



Woodlands operators standing over top of the debarker drums in the wood room at CBPPL



Centre for Research and Innovation

Operators were given a full tour of the Centre for Research and Innovation (CRI). A space built on more than a century of forestry heritage. The space itself is a symbol of transformation: once the former human resources building of Corner Brook Pulp and Paper Ltd., it stood vacant for 16 years before being redeveloped into a vibrant hub for research, skilled training, and innovation.

CBPPL played a foundational role in creating the CRI. As one of the three primary founding partners-alongside Memorial University's Grenfell Campus and College of the North Atlantic-CBPPL contributed not just the funding, but also the building itself and a long-term commitment to its maintenance. This partnership allowed the \$8.9-million redevelopment to proceed, transforming an unused industrial space into a modern centre that supports workforce development, applied research, and new economic opportunities.

This partnership shows how industry, education, and community can come together to build resilience. CBPPL's involvement ensures that the CRI is directly connected to real industry needs, including the training of current and future workers, the development of new forestry technologies, and the exploration of sustainable practices that will support both the mill and the surrounding region.

CRI stands as an example of how Corner Brook's forest industry continues to evolve. The same building that once supported the mill's workforce now houses makers, researchers, entrepreneurs, and students people shaping the next generation of wood-based innovation and rural economic development. It is a place where the past and future of the forestry community meet, creating new opportunities while honoring the industry that has long sustained the region.

Key Components of the CRI

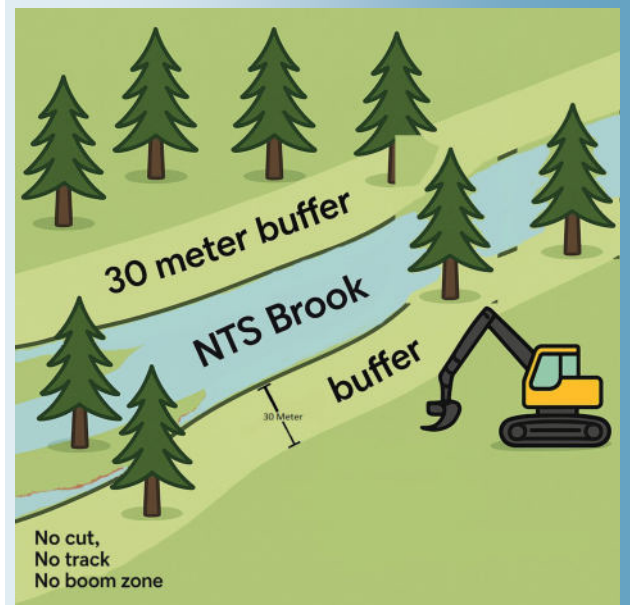
- **Makerspace:** a multi-level workshop offering wood and metal-working tools, CNC router and plasma cutter, a digital loom, 3D printers, vinyl and laser cutters, and more. Designed to support hands-on creativity and rapid prototyping.
- **Navigate Business Incubator:** Supports early-stage entrepreneurs with coaching, programming, events, and business development support.
- **Co-working Space:** Free and open to the public on weekday, with open seating, Wi-Fi, and amenities for freelancers, remote workers, and entrepreneurs.
- **Innovation Events:** CRI hosts events like Innovation Week, featuring workshops across design, creativity, prototyping, business skills, and technology.
- **Training & Conference Area for CBPPL**



Woodlands Operators & Truckers looking at the new plasma cutter CRI building



Woodlands Operators checking out the new wood working area at CRI building





Site Tour to Deer Lake Power

Since 1925, Deer Lake Power has been turning water from Grand Lake into electricity. Built to power the massive Corner Brook paper mill. At the time one of the largest in the world.

What makes the system impressive, even by today's standards, is its design. Water is diverted from Grand Lake through an 11-kilometre canal to the generating station, where the facility produces roughly **129 MW** of clean hydroelectricity. It's an early example of sustainable engineering done right, long before "green energy" became a buzzword.

Today, Deer Lake Power blends historic engineering with modern technology and energy demands, continuing to fuel industry and support the province's hydro-driven grid. Nearly a century later, it remains a symbol of innovation, resilience, and the potential of renewable power in Atlantic Canada.



Turbine-generators at Deer Lake Power
The British Thomson-Houston Co Ltd. Rugby England



Deer Lake Power Hydraulic Turbines
Bult 1929 Newport News Shipbuilding & Dry Dock Co
General Electric



Deer Lake Power
Sir.W.C Armstrong Whitworth & Co. Ltd
Elswick Works 1923



Deer Lake Power Control Room



Looking out at the Grand Lake Water Shed on the way to Main Dam in Deer Lake



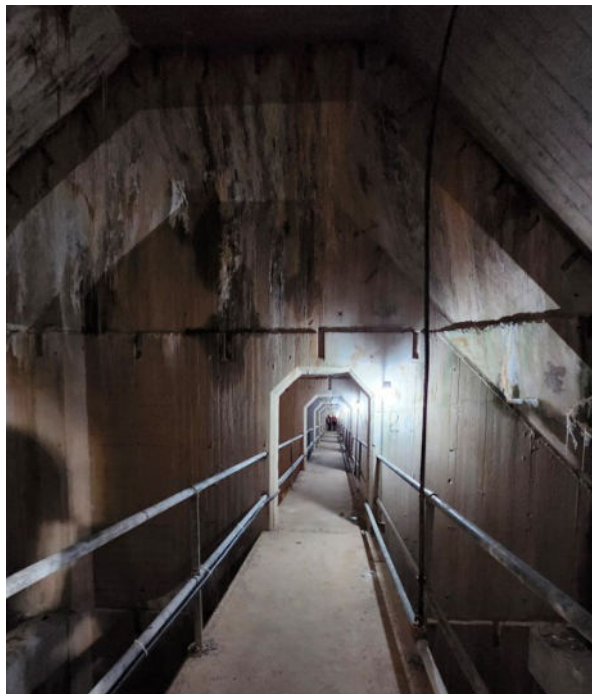
Sexton Lumber, located in Bloomfield, NL, is another one of Newfoundland and Labrador's largest and most advanced sawmills. Established in the late 1940s (originally Bloomfield Lumber), it now operates high efficiency twin small log production lines capable of producing approximately 80–90 million board feet annually, including SPF 2×3, 2×4, 2×6 lumber and finger jointed products.

The mill uses modern scanning, debarking, and milling technology to maximize output and sustainability. Sexton Lumber also supplies chips and residues to CBPPL.

The company employs roughly 100 people throughout their operations.



To set the mood before going inside the Main Dam, Roy Pittman, wood loader operator, told the group a ghost story from the original construction.





A stack of pulp wood you “could wall paper” at Avery’s operations along the Hampton highway during a site inspection for Fibre sourcing. Avery’s are one of the contractors cutting saw logs for Burtons Cove Logging & Lumber

Burtons Cove Logging & Lumber Ltd.

Rooted in the close-knit community of Hampden, Burtons Cove Logging & Lumber Ltd. Has grown from a humble backyard operations in the 1980s into one of Newfoundland and Labrador’s most trusted and established sawmills. Over four decades, the company has built its reputation on hard work, steady innovation, and a deep sense of responsibility to the land and people who depend on the forest sector.

Today, Burtons Cove operates a fully integrated mill producing roughly 120,000 Bdf of lumber each day and supporting more than 50 employees, making it a major regional employer. Its steady supply of pulp chips and hog fuel to CBPPL also keeps the provincial forestry supply chain strong and interconnected.

Modernization and Future Growth

The company continues to embrace modernization. In 2023, Burtons Cove completed a significant upgrade with the addition of a planing mill equipped with advanced optimization, sorting, and grading technologies. An investment that strengthens efficiency and long-term competitiveness.

Looking ahead: A New Generation at the Helm

Family has always been at the heart of Burtons Cove. As the business evolves, the next generation of the Osmond family are taking on greater responsibility within the operations. They are bringing new energy, fresh perspectives, and shared commitment to carry to company’s values forward into the future. This thoughtful transition reflects both stability and optimism for the decades ahead.

Provincial Impact

Provincially, Burtons Cove stands as one of the just three major sawmills producing 95% of Newfoundland and Labrador’s lumber supply. The forestry sector generates \$400 million annually and supports approximately 5,000 jobs, with mills like Burtons Cove serving as anchors of economic and community stability across rural regions.



Kruger's Corner Brook Pulp and Paper Mill: A Bold Step Towards a Sustainable Future

This past summer, Kruger Inc. unveiled a major diversification project aimed at securing the long-term future of its historic pulp and paper facility in Corner Brook, Newfoundland and Labrador. With an investment from Kruger of up to \$700 million, the plan represents one of the largest industrial commitments to the region in decades, signaling a renewed vision for both the mill and the province's forest sector.

The Corner Brook mill has been a pillar of Newfoundland's industrial and community life for a century. From its early days producing newsprint to its evolution into a modern pulp and paper operation, the facility has weathered global market changes while providing stable employment and supporting rural communities dependent on forestry. For Kruger, a Montreal-based company founded in 1904, Corner Brook is part of a long history of strategic investments that combine industrial growth with community and environmental stewardship.

The 2025 diversification initiative lays out a multi-faceted approach: modernizing paper production lines for greater efficiency and flexibility, expanding pulp storage and chip handling systems, upgrading hydroelectric capacity, and introducing a private wind farm to support renewable energy for mill operations. Beyond machinery and infrastructure, the plan emphasizes sustainability and focuses on reducing the facility's carbon footprint while strengthening its position in the global forest products market.

Within Canada's forestry sector, the initiative is a timely adaptation. Traditional markets for newsprint and paper have continued to shift dramatically, requiring diversification to maintain economic viability. By investing in advanced processing technologies and renewable energy, Kruger protects jobs and local economies while continuing to lead in responsible forest management and sustainable industrial practices.

For decades environmental responsibility has been a major part of Kruger's philosophy and is a prime reason why the Corner Brook operations are still here today. In Newfoundland & Labrador Kruger has led sustainable forest management practices, renewable energy intergradation, and energy efficiency measures, building on decades of ongoing environmental improvements. The new diversification project further embeds these principles, ensuring the facility's growth aligns with long-term ecological and community goals.

At its core, this project is about evolution. It represents a commitment to modern, sustainable manufacturing while honoring the legacy of a mill that has shaped both industry and communities for generations. If successful, it will position Corner Brook as a model for how Canada's forest-based industries can balance tradition, innovation, and sustainability while securing a vibrant future for forestry and the communities that depend on it.

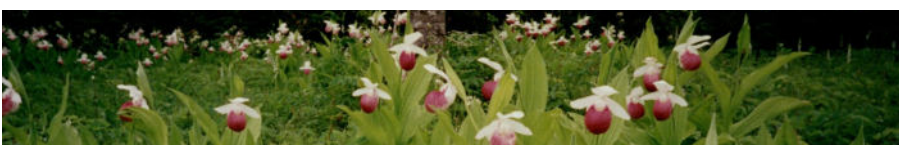


Looking across to town to the
Corner Brook Pulp and Paper Mill



The Sustainable Forestry Initiative (SFI) Qualified Logging Professional (QLP) program helps ensure the harvesting crews working in certified forests have the knowledge and training required to operate safely and sustainably. Under the SFI standard, each harvesting crew must include a trained professional who understands best management practices for protecting soils, water, wildlife habitat, and other forest values while conducting timber operations. At CBPPL we train every personnel working on our land base in QLP.

Through ongoing education and training, the QLP program also provides an opportunity to integrate emerging priorities such as wildfire awareness and fire prevention. Fire training for woodlands operators covering topics like equipment readiness and wildfire response helps ensure that forestry crews are prepared to reduced risk and respond quickly when fires occur.





Forestry Day in the Park

Corner Brook Pulp and Paper Woodlands take part in the annual Forestry Day in the Park event. This outreach is geared towards middle-school students from the local area. With over 300 students taking part each year, the event is a great experience for everyone. It provides an interesting and fun way to connect directly with the local forestry networks.

Lee Dunphy-Billard, from Immaculate Heart of Mary private school

Learning about environmental protection and testing the hydrophobic properties of the spill pad. The kids just came from the provincial silviculture booth where they received trees to plant at home.

This fall the woodlands set up an interactive table to teach about protection and clean up of hydrocarbons (oils, fuels) on our land base. A pan of water was put out and cooking oil added. The children then took pieces of spill pads, a hydrophobic material used for spill prevention and clean up of hydrocarbons, and took the oil off the water. The children also handled other environmental response items such as Rupture Seals.

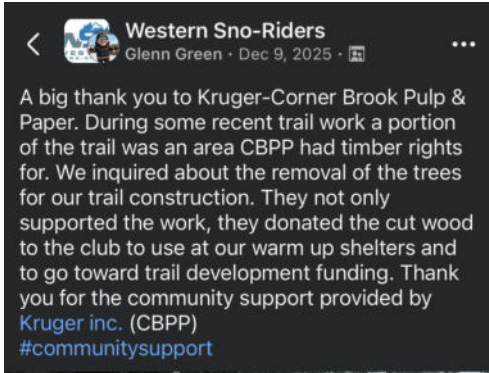
There was a draw for 100th years of CBPPL picnic baskets, a anniversary print painted by our Sustainable Management Forester, Kim Childs. Warm Apple Cider was handed out.

Both participants in Forestry Day in the Park include the Canadian Forest Service, NL Forest Safety Association, FireSmart, provincial government departments, local industry, and Indigenous organizations.

Another great fall Forest Day in the Park!



Supporting the Community



The Newfoundland & Labrador Snowmobile Federation recently relocated one of their trails from its original route to a newly designated area secured through a Kruger tender. As part of this transition, CBPPL generously donated all timber cleared from the new right of way. The Federation is using this wood both as firewood for warm up shelters and as a valuable resource for fundraising efforts that support continued trail development across the region.



Forestry day in the Park winner
Lexi Wight

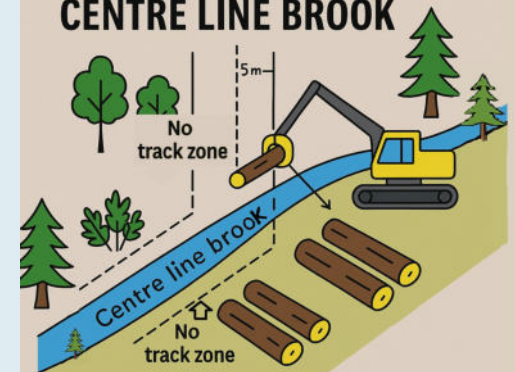
Immaculate Heart of Mary School receiving a 100th year anniversary print and picnic basket.

Original artwork by Kim Childs (Sustainable Management Forester in the Woodlands Department at CBPPL). The painting subject is from an historic photograph of wood going to the Corner Brook Pulp and Paper mill by Hayes trucks.



Union roundwood Trucker Charles Harding and Woodroom Superintendent Chris Hawkins with their participation prizes during a Kruger Curling event.

FORESTRY OPERATIONS CENTRE LINE BROOK



- Pile wood outside the 5 meter no track zone.
- Leave unmerchantable soft woods, hard woods, and shrubs next to Centre line brook
- Boom can reach into 5 m no track zone to harvest merchantable wood

The Woodlands Harvesting Department and Northwest Forest Resources Limited hosted the 2nd year Forest Resources Technician class on site at an active winter harvest operation in Taylors Brook.

This tour is a curriculum activity in the Forest Harvesting II course of their program. As part of this course, students study logging systems and machine configurations with an emphasis on productivity, environmental performance, and safety. Students were exposed to harvesting equipment and given the opportunity to interview operators and supervisory staff on the forest operations.

In their future roles as forest technicians, some graduates may be employed in planning or supervising such operations. To this end, it is important that they get exposure while training at CNA. The students in the photo above graduated in Spring 2025.

CBPPL is longstanding supporter of the Forest Resources Technician program lending support to CNA faculty and students through: the use of facilities, such as the woodyard in Corner Brook; tours of the paper manufacturing facility; funding scholarships; hosting silviculture and harvesting tours; offering insight and support to CNA through guest lecturing, sharing of knowledge, provision of data\information to support our field-based training; actively participating in the FRT PAC, and supporting the annual CNA Tree Planting Service Learning project (linked to support for the Silver Ring Ceremony through the Canadian Institute of Forestry). As another example of our support, CBPPL has formally volunteered to designate a well-used CNA training site in Crescent Pond as a "Special Conservation Area" to protect a unique training area planted with an exotic spruce (Sitka Spruce).



During the site visit wood product specifications were highlighted and how to tell operator saw log effort by looking at the wood piles.



The class talking to union operator Victoria Pittman.



The Forest Resource Technicians class watching a cut to length operation.



College of the North Atlantic's Forest Resources Technician students complete their practical scaler training at the CBPPL Wood Yard alongside the Government of Newfoundland and Labrador's Scaling & Sawmill Specialist (Chief Scaler), Justin Mutford. The Woodlands Department's scalers prepared and organized the wood for the course.



Comprehensive Truck & Trailer Inspections

The inspection program continued throughout 2025 and will persist throughout 2026. All trucks that enter the wood yard at Corner Brook is subject to a comprehensive truck and trailer inspection. These inspections continue to ensure total safety and efficiency of the fleet according to the Department of Transportation (DOT) regulations.

If a deficiency is found a directive for its repair is issued. In the event that a serious deficiency is identified, the truck is taken out of service until issues are fixed.

Every ditch, culvert, and slope plays a role in watershed health. When these systems are designed, installed, and maintained correctly, they help:

- ✔ Protect water quality
- ✔ Reduce erosion & sedimentation
- ✔ Support fish habitat & natural stream function
- ✔ Prolong road & infrastructure lifespan
- ✔ Meet environmental compliance requirements

Small problems upstream can become big problems downstream. Regular inspections, proper design, and timely repairs are key to safeguarding our waterways for the future



All operations are required to have straw bales and filter fabric in their environmental response kits for sedimentation prevention

Proper Watercourse Installation and Maintenance

Protecting our waterways begins long before water reaches a brook, stream, or river. Proper installation and ongoing maintenance of watercourse structures—such as ditches, culverts, and roadside slope—are essential to preventing erosion, maintaining water quality, and supporting healthy ecosystems. When these systems fail or are poorly managed, the results can be immediate and damaging.

Water Course Check List:

ISSUE EXAMPLES; If any of this are observed fix immediately



- A) Silty Water
- B) Ditch running directly to brook
- C) Ruts leading to brook
- D) Road side slopes unstable and eroding to brook
- E) Grading leaving ridge, allowing road runoff to enter brook
- F) Tops or debris in stream
- G) Improper stabilization causing erosion
- H) Hanging culvert



Photo by Woodlands Planner Michael McCarthy



Connecting Communities and Forests: CBPPL at the 2025 SAM Workshop



When the Stewardship Association of Municipalities (SAM) hosted its 2025 Newfoundland and Labrador Habitat Conservation Workshop in St. John's, it brought together municipal leaders, conservation groups, Indigenous representatives, environmental professionals, and industry partners all focused on the future of our land. Corner Brook Pulp and Paper's Woodlands Planner, Jerome Compton, was there representing both the company and the forests we manage.

SAM workshops have a reputation for being practical, down to earth gatherings where people speak openly about what's working, what isn't, and what needs to happen to protect natural spaces. The 2025 workshop carried on that tradition, covering everything from habitat conservation to land use planning to the environmental challenges communities face today.

For CBPPL, taking part in events like this isn't just about staying informed it's about contributing to the conversation. What we learn at SAM directly influences how we plan, harvest, build roads, and manage the forests surrounding so many communities. Hearing municipalities talk about issues like wetland protection, wildlife habitat, and development pressures helps us adjust our planning so community and forestry priorities line up instead of competing.

The workshop highlighted key topics such as habitat protection, wildfire resilience, and biodiversity insights that help shape how CBPPL manages its land base and ensures our practices keep pace with evolving environmental expectations.

Forestry doesn't happen in isolation. It intersects with hiking trails, water supplies, cabin areas, and wildlife corridors. SAM brings together the people connected to these places—municipal staff, conservation leaders, community stewards and creates space to find solutions that work for everyone.

Showing up at the table matters. It demonstrates CBPPL's role as an active partner in land stewardship, not just an operator on the landscape. As environmental challenges become more complex, collaboration between industry, communities, and conservation groups will be essential.

Jerome's involvement in the 2025 workshop helps ensure the forests we manage continue to support healthy ecosystems, strong communities, and sustainable forestry well into the future.



Caribou in Port Aux Choix (taken from the SAM website)



“Forests play a valuable role in the economic, social, and environmental health of our communities. That’s why we take our forest management and environmental protection seriously.”



Corner Brook Pulp and Paper Limited

Forest Management - Planting



• Plant 2.1 million trees annually



Preparing for ISO 14001:2026 Through SFI Certification

ISO 14001:2026 places greater emphasis on climate change, biodiversity, natural resource availability, change management, and supply chain accountability. These priorities are already core elements of our SFI Forest Management and Fibre Sourcing programs, placing us in strong alignment with the updated standard.

Our SFI-certified systems address formal change management, supplier oversight, and environmental risk management across the supply chain, supported by robust monitoring, documentation, and third-party verification. We are also EUDR compliant and have provided full GeoJSON-based geolocation data for all fibre supply since January 2025, ensuring complete traceability and transparency.

In summary, our SFI certification and traceability systems position us to meet ISO 14001:2026 with confidence, ensuring responsible sourcing, strong environmental performance, and dependable products for our customers.



Photo (left): Natural Regeneration in Western Newfoundland and Labrador

This image shows processed, cut-to-length wood on the right and limbs from processing on the left, called brush mats. These brush mats provided stable travel surfaces for harvesting and forwarding equipment moving across the cut block.

The brush mats play an important environmental role by protecting the underlying soil and existing successional forest vegetation. By minimizing soil disturbance and compaction, they help preserve the integrity of the forest floor while harvesting occurs in the overstorey.

In the western region of the island, natural regeneration is the primary method of reforestation. Following harvesting, forests are allowed to regenerate naturally from existing seed sources and vegetation. All harvested areas are legally required to achieve successful reforestation, ensuring the long-term sustainability of the forest land base.



Atlantic SFI

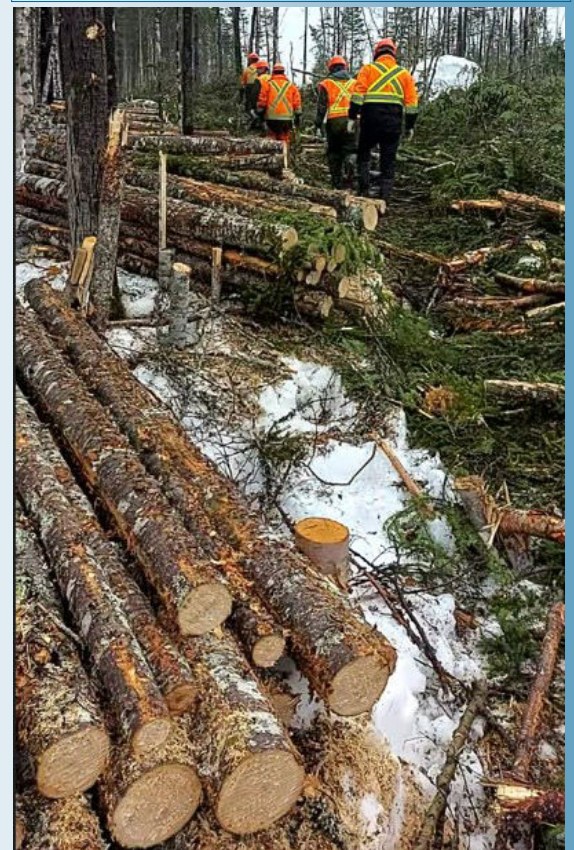
The Atlantic Sustainable Forestry Initiative® Implementation Committee (Atlantic SIC) plays a key role in promoting responsible forest management across Atlantic Canada and the Northeastern United States. As part of the larger SFI® network, the committee brings together forest companies, government agencies, Indigenous communities, landowners, conservation groups, and academic partners to support sustainable forestry at a regional scale.

The current chair of the Atlantic SIC is the Environmental Management Representative from Corner Brook Pulp and Paper Ltd, reflecting the company's active involvement in regional sustainability initiatives.

The Atlantic SIC focuses on four primary areas:

- **Public Outreach:** Increasing awareness of sustainable forestry and the value of SFI certified products.
- **Training & Development:** Supporting logger and forester training to strengthen safety, professionalism, and best practices.
- **Conservation & Community Projects:** Backing initiatives that protect water, biodiversity, wildlife, and cultural values.
- **Certified Product Recognition:** Helping markets understand the credibility and rigor behind SFI certification standards.

As sustainable forestry challenges evolve, the Atlantic SIC continues to provide leadership, innovation, and collaboration across borders. The committee's efforts help ensure that forests in the region remain healthy, resilient, and valued for generations to come.





Highlight on a Woodlands Hazard

Chain shot is a hazard on all logging operations. It can cause serious injury or death to the machine operator, ground personnel and bystanders. Chain shot occurs when the chain breaks within the harvesting head and ejects a piece or pieces of chain at high velocity (similar to the speed of a bullet).

Major Chain Shot Rules

1. Ensure all guards are in place and in good condition.
2. Always follow the manufacturer's recommendations of saw chain based on cutting systems to minimize risk of cutting system failure.
3. **Never engage in a cut whereby the operator, ground personnel, and or bystanders are located in the shot cone zone.** Always perform cuts as close to the ground as possible.
4. Inform all crew and bystanders/visitors of the dangers of chain shot through site inductions and toolbox meetings.
5. 19 mm or thicker polycarbonate front windshields on all harvesters and processors.

Connecting Canada's Forest Sector: The Canadian Woodlands Forum

For more than a century, the Canadian Woodlands Forum (CWF) has played a vital role in connecting the people who work every day in Canada's forest sector. Founded in 1919, the CWF is the country's only national, grass roots organization dedicated specifically to woodlands operations, bringing together forestry contractors, forest product companies, suppliers, and on the ground professionals to share knowledge, strengthen practices, and support a sustainable fibre supply chain.

Through training, outreach, industry advocacy, and networking events, the Forum continues to promote professionalism, operational efficiency, and environmental responsibility across Canada's working forests. Its membership spans the full supply chain, providing a trusted space for collaboration on the practical challenges and opportunities facing the sector today.

Spotlight on the 2025 Spring Meeting

Representatives from the Woodlands Division and Government of Newfoundland and Labrador, once again attended the CWF spring meeting in Moncton. The CWF Spring Meeting 2025 demonstrated the Forum's importance as a national convenor for the forestry community. Held April 9–10, 2025, at the Delta Beauséjour Hotel in Moncton, New Brunswick, the event drew more than 200 attendees from across Atlantic Canada and beyond, marking the Forum's 106th Annual General Meeting.

The conference featured two full days of technical sessions, panel discussions, and networking opportunities focused on issues shaping the future of woodlands operations. Program topics included market trends and outlooks, sustainable forest management, contractor training and certification, emerging technology, and equipment maintenance reflecting on the operational realities and long term priorities of the sector.

Beyond the technical program, the Spring Meeting maintained its tradition of strong community engagement. The Log A Load for Kids fundraising gala and auction raised over \$11,000 in support of pediatric health care at the IWK Health Centre, reinforcing the industry's longstanding commitment to giving back to the communities where it operates.

The meeting also celebrated leadership and excellence within the contracting community, including recognition of the 2024 Contractor of the Year, highlighting the professionalism and dedication that define Canada's forestry workforce.

The success of the 2025 Spring Meeting reflects the Canadian Woodlands Forum's continuing role as a trusted voice and connector within the forest industry.





FSANL 2025 Annual Forest Industry Health & Safety Conference

Safety First in the Forests:

Inside the Forest Safety Association of Newfoundland & Labrador

In Newfoundland and Labrador’s forestry sector, the Forestry Safety Association of Newfoundland and Labrador (FSANL) stands as a driving force for safer workplaces and stronger industry standards. Based in Corner Brook, the not for profit association is dedicated to the core principle:

“Safety is good business – plain and simple.”

Founded to support workers and employers across the province’s diverse forest industries of pulp and paper, sawmilling, harvesting, silviculture, trucking, FSANL focuses on ensuring every worker returns home as healthy as they arrived. Training and awareness are at the heart of this mission, and the association offers an impressive suite of programs ranging from chainsaw and brush saw safety to first aid, power line hazard training, hearing testing, and fit testing.

Beyond classroom training, FSANL is known for its public outreach and practical safety resources. Its “Into the Woods” and “Chainsaw Safety” video series educate both industry professionals and the general public on safe practices around forestry operations. These videos help demystify forest work and remind viewers of the hazards and responsibilities involved in rural and industrial environments.

The association also fosters industry collaboration through events such as its annual Forest Industry Health and Safety Conference (pictured here), which brings together workers, employers, regulators, and safety professionals to share ideas and strengthen the culture of safety. FSANL’s ongoing involvement in school and community events, including activities during National Forest Week, further demonstrates its commitment to encouraging safe, sustainable engagement with the province’s forest resources.

With its continued growth and expanding membership, FSANL has become a central pillar in Newfoundland and Labrador’s forestry sector promoting accident prevention, offering practical safety tools, and leading the way toward safer forest operations for generations to come.

October 8th, 2025 Agenda

- Workplace NL—Return to Work & PRIME changes
- Insect & Fire Damage in NL Forests
- Newfoundland Power—”Mind the Line” Safety Campaign
- Combustible Dust & Vapour Hazards
- FSANL Updates & Initiatives
- Newfoundland Forest Industry Update
- Personal Safety Story– Injury Recovery
- Awards



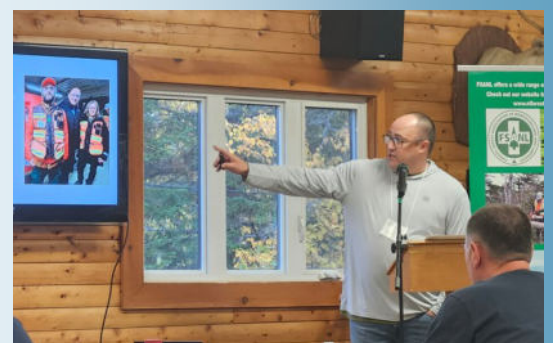
Appreciation Award winners

- St. John’s Ambulance (pictured)
- NL Lumber Producers Association



Safety Champion Award Winner

- BlackStar



Personal Safety Story Injury Recovery
Presenter: Alan MacDonald

Your comments on our environmental performance, or suggestions on how we might improve our operations are always welcome.

To comment or to request information on CBPPL Woodlands, please contact:

Jessica Galllott
SRM Inc.
Environmental Management
Representative

Woodlands Division
Corner Brook Pulp & Paper Limited
P.O. Box 2001, Corner Brook, NL
A2H 6J4
Tel: (709) 637-3426
Email: jessica.galllott@kruger.com

www.cbppplwoodlands.com



Socio-Economic impact of Corner Brook Pulp and Paper numbers are tracked for all locations of the province Newfoundland and Labrador.

Socio-Economic Impact Assessment

Corner Brook Pulp and Paper Employees ~500 people in three divisions:

- 300 in the Mill
- 175 in Woodlands
- 25 at Deer Lake Power

Labour income impacts (direct, indirect, and induced) of CBPPL operations totals: **128.49 million** to the provincial economy (CBPPL, 2024).

Union employee payroll Mill/DL/Woods: **27.59 Million** (CBPPL, 2024)

The Woodlands Division of CBPPL is responsible to supply all wood fibre needed for operations to the mill.

Besides newsprint production, CBBPL also supply the needs of large local sawmills that operate throughout the year.

All wood fibre is tracked and monitored by the Woodlands Division through:

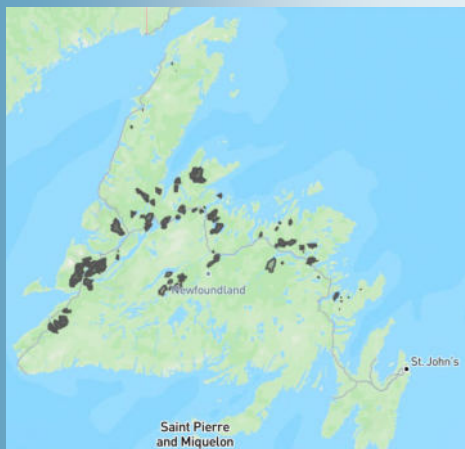
ISO 14001:2015

Sustainable Forestry Initiative's (SFI) Forest Management Standard

SFI Fibre Sourcing Standard

PEFC Chain of Custody Standard

All geographic location of our fibre is tracked as per the European Union Deforestation Regulations (EUDR) as of December 2024 and fibre Geo-reference in Geojson files are available upon request to our purchasers.



Map of wood fibre harvest locations on the island portion of the province of Newfoundland and Labrador during 2025

