

# Corner Brook Pulp & Paper Limited Woodlands Department

## Environmental Progress Report Year in Review 2024

Approaching 100 years of making Pulp & Paper in Corner Brook





## Forest and Environmental Policy and SFI Principles

This Forest and Environmental Policy applies to the scope of the environmental management system for the Woodlands Division and the principals of the SFI Forest Management and Fibre Sourcing Standards.

### We commit:

To conduct activities in a manner that protects the **health and safety** of our employees and the public.

To practice **sustainable forestry** to meet the needs of the present while promoting the ability of future generations to meet their own needs by practicing a land stewardship ethic that integrates reforestation and the managing, growing, nurturing and harvesting of trees for useful products, and for the provision of ecosystem services such as the conservation of soil, air and water quality and quantity, climate change adaptation and mitigation, biological diversity, wildlife and aquatic habitats, recreation and aesthetics.

To provide for regeneration after harvest, maintain the health and productive capacity of the forestland base, and to protect and maintain long-term soil health and productivity. In addition, to protect forests from economically, environmentally and socially undesirable impacts of wildfire, pests, diseases, invasive species, and other damaging agents and thus maintain and improve long-term **forest health and productivity**.

To protect and maintain the water quality and quantity of water bodies and riparian areas, and to conform with forestry best management practices to **protect water** quality, to meet the needs of both human communities and ecological systems.

To manage forests in ways that **protect and promote biological diversity**, including animal and plant species, wildlife habitats, ecologically and culturally important species, threatened and endangered species and native forest cover types at multiple scales.

To **prevent pollution** and protect key forest resources.

To manage the **visual impacts** of forest operations, and to provide **recreational opportunities** for the public.

To manage lands and **special sites** that are geologically or culturally important in a manner that takes into account their unique qualities.

To meet or exceed applicable federal, provincial and local forestry and related environmental **laws, statutes and regulations**.

To support advances in sustainable forest management through **research**, science and technology.

To improve the practice of sustainable forestry through **training and education** programs.

To set appropriate environmental **objectives and targets**, develop action plans to meet them, monitor progress and regularly review and update them.

To broaden the practice of sustainable forestry on all lands through **community involvement**, socially responsible practices, and through recognition and respect of **Indigenous Peoples' rights** and traditional forest-related knowledge.

To broaden the understanding of forest certification to the Forest Management and Fibre Sourcing Standards by documenting certification audits and making the findings **publicly available**.

To **continually improve** the practice of forest management, and our environmental management system regularly. And to monitor, measure and report performance in achieving the commitment to sustainable forestry.

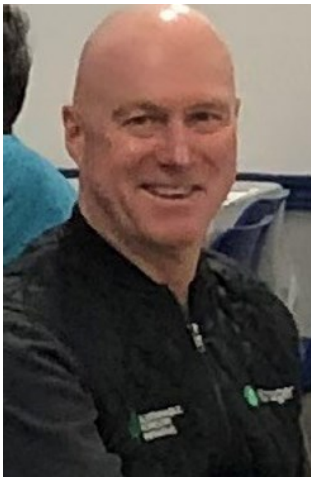
To use and promote sustainable forestry across a diversity of ownership and management types that is both scientifically credible and socially, environmentally, and economically responsible to **avoid sourcing from controversial sources** both domestically and internationally.

John MacLellan  
Woodlands Manager



Jean-Paul Moore  
General Manager





## Message from John MacLellan, Woodlands Manager

It is that time of year again. The days are lengthening and the clock jumped ahead! One of the certain signs of Spring in this country and province.

The articles and people you will see and read about in this annual report are just a few of the 126 people directly involved with Corner

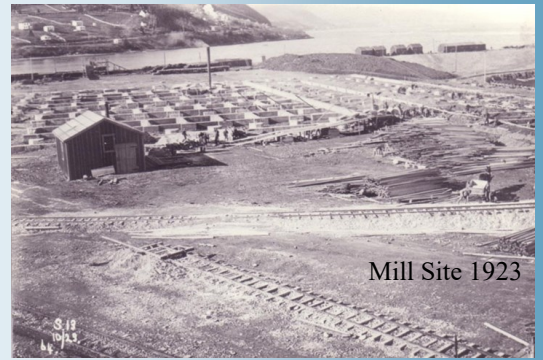
Brook Pulp Paper's Woodlands. 2024 was the 99<sup>th</sup> year since the inception of paper making on the Humber River and Bay of Islands. No mean feat for enterprise and the people who built, operated and caused the timber to move down the valleys and along the shores in that time. Everyone involved is proud of this heritage and our stewardship. CBPPL continues to seek opportunity and partnerships with-in the communities of Newfoundland.

This year, we decided to re-establish our past commitment to the Forest Stewardship Council by seeking certification of our Timber License under their stamp. This process is anticipated to be completed in 2025 and will be in parallel to the present SFI certification. If that was not enough, we responded to our customers in the European Union's introduction of Deforestation Regulations (EUDR) for January 2025. With the efforts of our staff, provincial forestry (NL FFA), and professional partners, we have a working compliance model for our European customers in place. This is already supporting our corporate sales team in marketing Corner Brook's paper to present and maybe future customers soon!

Finally, I want to close on the most important note for our business and communities. 2024 was our best year for the least amount of injury and incidents in the past 5 years. That is a credit to everyone involved from driving, operating or auditing!

Thank you to you all for your care and personal conduct.

*John MacLellan*



Mill Site 1923

Corner Brook had the advantage of a deep water port where cargoes of newsprint could be loaded directly at the mill site.

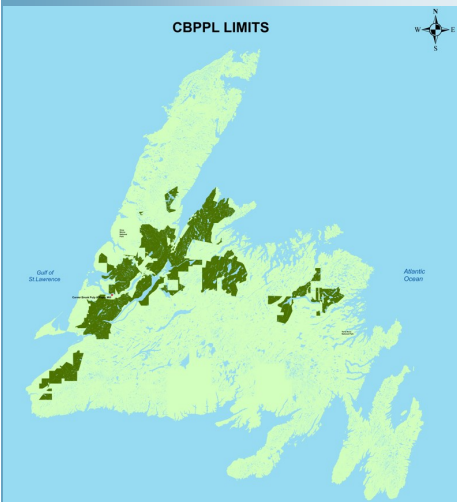
The cost of construction amounted to \$45 Mil.



**The pulp and paper mill continues to be the heart of Corner Brook to this day**







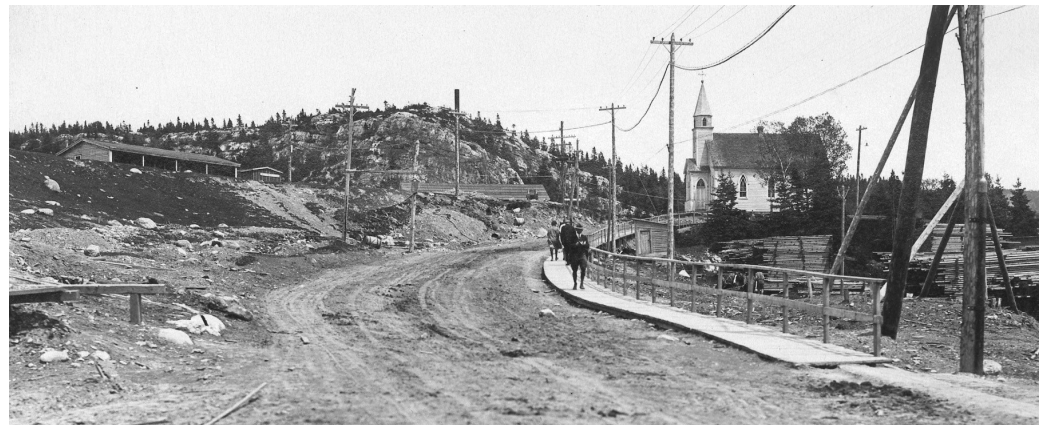
Corner Brook is a picturesque forest city located on the west coast of Newfoundland, nestled at the head of a deep, natural Harbour. This strategic location on the Bay of Islands, part of the larger Gulf of St. Lawrence, offers easy access to international markets, making it an ideal place for trade and industrial activity. One of the city's most notable landmarks is the Corner Brook Mill, a cornerstone of the local economy for decades.

The Corner Brook Pulp and Paper Mill had been in operation since the 1920s, and over the years, it has become a significant player in the paper industry, contributing to both regional employment and Canada's global export reach.

The location of the mill in Corner Brook is a vital asset. The natural harbour allows for easy and efficient shipping of goods, ensuring quick access to both the North American market and global destinations. The city's access to raw materials, such as timber from surrounding sustainably managed forests and plentiful water resources further enhances the mill's efficiency and long-term sustainability.



Construction of Central Street, Town Site area  
Corner Brook. July 15, 1924.



Park Street, Corner Brook. Sept 1925

## Background History of Corner Brook Pulp and Paper Mill

- 1925-1928  
Newfoundland Pulp and Paper Company
- 1928-1938  
International Paper Company of Canada
- 1938-1984  
Bowater's Newfoundland Pulp and Paper Mills Limited
- 1984 - present  
Kruger Inc.  
Corner Brook Pulp and Paper Ltd.

In addition to its industrial significance, the mill is a vital part of the community's history. Over the years, it has provided employment to generations of local families, shaping the social and economic landscape of Corner Brook. The mill plays a key role in the city's efforts to balance industrial growth with environmental responsibility, striving to adapt to modern technological advancements that promote sustainability.

## Corner Brook Pulp and Papers' Sustainable Wood Fibre Supply and EUDR Compliance

A focus of the CBPPL Kruger mill has been sustainability across the operations. The woodlands of CBPPL has made significant strides in ensuring the sustainability and traceability of its wood fibre supply, aligning with global environmental standards. As part of its commitment to responsible forestry practices, CBPPL has the geolocation of all its wood fibre supply, meeting the stringent requirements of the European Union Deforestation Regulation (EUDR).

(continued on next page...)



## Corner Brook Mill: A Vital Part of the City's Economy and History

(Continued...)

CBPPL's fibre supply is certified under both the Programme for the Endorsement of Forest Certification (PEFC) Chain of Custody Tracking and the Sustainable Forestry Initiative (SFI) Fibre Sourcing Standard. These certifications demonstrate that CBPPL adheres to rigorous environmental and social criteria, ensuring that the fibre is sourced from well managed forests. Both PEFC and SFI standards promote the long-term health of forests, respect for biodiversity, and responsible land management practices.

Corner Brook Pulp and Paper Limited stands as part of a dynamic city, where nature, history, and industry meet. With it's friendly people, four seasons, beautiful surroundings, and its robust infrastructure that connects it to both the national and international markets, Corner Brook continues to be an important hub in Eastern Canada.

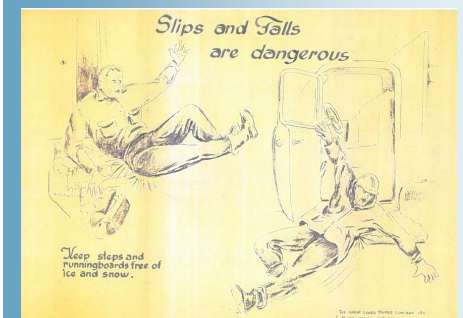
Since its establishment in 1925, the mill has not only provided high-quality products but also created a stable source of employment for generations of families across the province. CBPPL's dedication to responsible forestry practices, sustainable operations, and community engagement has helped to maintain the role as a cornerstone of the region's economy. As the mill reaches it's 100th year of making paper, the ongoing efforts to balance industrial growth with environmental stewardship continue to position CBPPL as a leader in the pulp and paper industry.



Harvest area of days gone by. When you look at tree stands throughout the province you can find hints of history. In this picture you can see the old stumps from an earlier stand harvest. As well, 4 foot logs can still be found through out water bodies on the Island from the days of the spring drive, when pulp wood was moved by water.



City of Corner Brooks' Town water supply dam facing upstream Oct, 1924





## The EUDR regulation affects seven commodities:



Cocoa



Coffee



Soy



Palm Oil



Wood



Rubber



Cattle/Beef

**SEVEN COMMODITIES AFFECTED BY THE EUDR** These commodities and associated products will soon be required to undergo strict mandatory due-diligence checks when entering the EU to demonstrate they have not been sourced from areas affected by deforestation or forest degradation.



### Corner Brook Pulp and Paper leads the way in EUDR Compliance

Corner Brook Pulp and Paper is proud to be one of the few paper mills capable of fully complying with the European Union Deforestation Regulation (EUDR). Thanks to the support and collaboration of the provincial government, and the local company Resource Innovations, we can provide precise geolocation data for our fibre sources, ensuring transparency and sustainability throughout our supply chain. Our continued dedication to responsible forestry and regulatory compliance sets us apart in the industry, reinforcing our dedication to environmental stewardship and sustainable paper production.

Deadline to comply with the new law was extended from Dec 2024 until Dec 2025. CBPPL was able to meet the first deadline

### Sustainable Forestry 3rd generation cut

During the summer of 2022, a harvesting operation at Logger School Road area, located just outside of Corner Brook, revealed a sign from a pre-commercial thinning operation back in 1986. This was the third harvest of this area for the Corner Brook Pulp and Paper Mill. Because of sustainable forestry practices, it is assured that this location, will once again produce a healthy forest stand that can be harvested. Most of CBPPL fibre is coming from 3rd generation harvests.



### Tracking Newfoundland Wood Fibre for EUDR Compliance: The Role of ISO 14001, SFI, and PEFC

The European Union Deforestation Regulation (EUDR) requires companies to prove that wood products do not originate from deforested or illegally logged areas. For Newfoundland wood fibre, ensuring compliance involves robust certification systems. Three critical frameworks—**ISO 14001**, **Sustainable Forestry Initiative (SFI)** Forest Management & Fibre Sourcing, and **Programme for the Endorsement of Forest Certification (PEFC) Chain of Custody**—help ensure the origins of NL wood fibre and verify its sustainability.

#### ISO 14001: Environmental Management and Compliance

ISO 14001 is an internationally recognized standard that ensures organizations establish and maintain environmental management systems (EMS). While it does not directly track wood fibre, it plays a crucial role in:

- ◇ **Documenting sustainable sourcing policies**, requiring companies to track and report raw material origins.
- ◇ **Verifying compliance with environmental laws**, including forest management regulations in Newfoundland.
- ◇ **Supporting due diligence efforts**, helping businesses demonstrate sustainable forestry practices that align with EUDR requirements.

For Newfoundland and Labrador's forestry sector, ISO 14001 provides a structured approach to ensuring that wood fibre originated from legal, well-managed sources.

#### SFI Forest Management & Fibre Sourcing: Ensuring Sustainable Forestry

The **SFI Forest Management** and **SFI Fibre Sourcing** standards provide specific frameworks for sustainable wood production and responsible procurement. These standards help ensure forestry operations are maintaining healthy, productive forests.

- ◇ **SFI Forest Management**: Ensures forests are managed for long-term sustainability, preventing illegal logging and deforestation.
- ◇ **SFI Fibre Sourcing**: Requires mills and manufacturers to conduct risk assessments and verify that wood fibre comes from responsible sources—even if the forests themselves are not certified.
- ◇ **Due diligence system (DDS)**: Supports EUDR compliance by ensuring that supply chains track fibre back to legal, well-managed sources.

(Continued on next page...)



(Tracking Newfound Wood Fibre for EUDR Compliance Continued...)

By applying SFI standards, CBPPL strengthens its ability to demonstrate responsible forest management and legal sourcing.

PEFC Chain of Custody: Enhancing Traceability in the Supply Chain

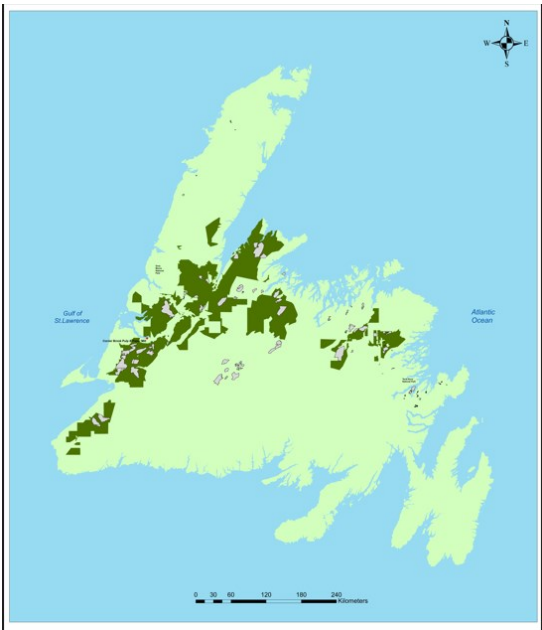
The **PEFC Chain of Custody (CoC)** certification is crucial for providing the origin of wood fibre for Corner Brook Pulp and Paper Limited (CBPPL) products and ensuring compliance with international regulations like the EUDR. This certifications enables:

- ♦ **Full traceability from forest to final product**, ensuring that Newfoundland wood fibre can be tracked throughout the supply chain.
- ♦ **Risk-based assessments**, preventing fibre from high-risk or illegal sources from entering supply chains.
- ♦ **Third-party verification**, which provides independent oversight to ensure that sustainability claims are credible.

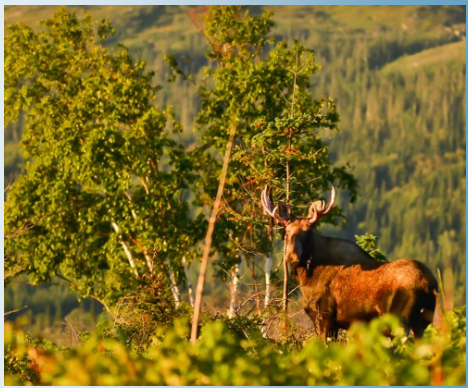
For companies sourcing wood fibre from CBPPL, PEFC CoC certification ensures that we meet EUDR requirements while maintaining transparency and accountability.

The combination of **ISO 14001, SFI Forest Management & Fibre Sourcing**, and **PEFC Chain of Custody** creates a robust system for tracking Newfoundland’s wood fibre that goes into CBPPL products and proving compliance with the EUDR. ISO 14001 establishes environmental accountability, SFI strengthens sustainable forestry and responsible sourcing, and PEFC ensures full supply chain traceability. Together, these certifications help CBPPL demonstrate its commitment to legality and sustainability while maintaining access to international markets.

With the information already gathered through these certifications, it was an easy step to acquire the remaining EUDR requirement– **geolocation data**–with the help of a local forestry company, ensuring full compliance with the regulation.



A picture from the GeoJSON data for the 1st Quarter location of fibre in black outline. All fibre comes from the Island portion of the province of Newfoundland and Labrador, Canada. CBPPL land base (in dark green on the map) and crown land base (in light green).



Main components of the EUDR:

EUDR regulation (ref. article 3)  
The goods and products concerned shall not be made available on the market or exported unless all the following conditions are met:

- 1) They are deforestation-free
- 2) They have been produced in compliance with current legislation in the country of production (legality)
- 3) They are covered by a declaration of due diligence. EUDR due diligence statements require specific information:

- a. Geolocation of forests where wood has been harvested (data collection and geolocation)
- b. Assessment of the risk attributed to the country of origin concerned (Risk Assessment)
- c. Mitigation measures (Risk Management)







September 2024 the external auditor visited Nobles harvesting operation, checking objectives for the SFI fibre sourcing standard; log books and wood tags are being reviewed here.

Nobles truck fleet continue to place at the top ranking for CBPPL truck inspection awards for safety and maintenance.

## On Track

### Environmental and Sustainable Forest Management Systems

Corner Brook Pulp and Paper Limited, Woodlands Department maintains its commitment to Sustainable Forest Management by upholding the standards to three certifications within our woodlands operations; ISO 14001 Environmental Management Standard; Sustainable Forestry Initiative® (SFI®) Forest Management Standard; SFI® Fibre Sourcing Standard.

During the period of September 9th, 2024, CBPPL had a surveillance audit completed on our system.

The registration cycle is over five years with surveillance audits conducted annually. The audit assessed active and/or completed harvest operations through interviews with the company staff and contractors. The audit also assessed the SFI documentation and records at the company's office including stakeholder and Indigenous communication.

The SFI program third-party audit was undertaken by Intertek. Intertek is an independent third-party registrar that is accredited by the ANSI National Accreditation Board (ANAB) Standard ensuring the integrity and credibility of the audit process.

#### Results In 2024

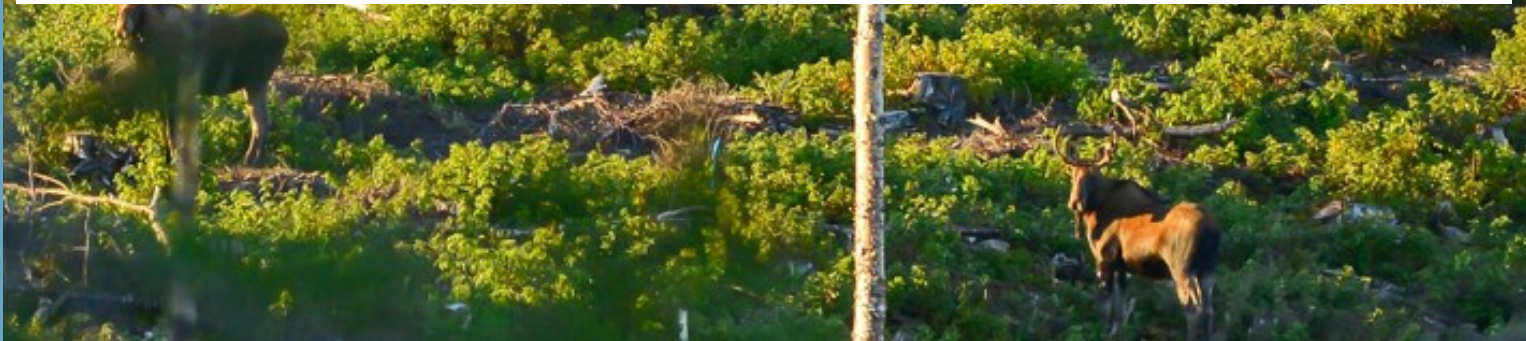
We are happy to report that CBPPL Woodlands maintains certification to all standards.

There were 3 minor nonconformances reported from the 2024 fall audit. All prior Nonconformities were closed.



Standard	Performance Measure and Indicator	Finding
SFI	9.1.2b The organization shall evaluate compliance and take action if needed.  SFM FM Clause 11.1.2 System to achieve compliance with applicable federal, provincial, state, or local laws, and regulations	Deficiencies were identified in the monitoring program to achieve legal and environmental compliance: <ul style="list-style-type: none"> <li>The silviculture contractors are not being monitored by the EMS</li> <li>Some harvesting contractors are not consistently conducting their #1 inspection as required by the EMS</li> </ul>
SFI	SFI FS 2.2.1	The fibre sourcing monitoring program on Crown Land has not been fully implemented
SFI	SFI FS 2.2.2	The information collected via the fibre sourcing monitoring system is not sufficient to evaluate the rate of conformance to best management practices and to identify areas of improved performance

Based on the findings, corrective actions have been implemented to address the minor nonconformities identified. The next audit of our system is scheduled for May 2025, at which time the effectiveness of these corrective measure will be evaluated to ensure full conformance.





## Caribou Industries Inc.: A New Chapter in Newfoundland's Forestry Industry

A new forestry company, Caribou Industries Inc., is making a place for itself in Western Newfoundland. Owned by Scott Lucus, a member of the Bay St. George Qalipu Band, this Aboriginally owned business is bringing fresh energy to the region's forestry sector.

Caribou Industries has hired 17 young workers from Western Newfoundland, with some employees returning home from jobs away to seize this opportunity. The company supplies wood to Kruger's Corner Brook Pulp and Paper mill, using a Grapple Skidder full-tree roadside processing operation-an approach that is new to the CBPPL woodlands contractors.

Scott, who has been running a successful welding business in Fort McMurray, Alberta, saw the forestry industry as a way to expand his business ventures while bringing his family back to Newfoundland and Labrador. His vision of Caribou Industries is not just about business growth but also about supporting the local economy.



## Woodlands Department Celebrates National Forestry Week with the community

On Sept 25<sup>th</sup>, the Woodlands department helped celebrate National Forestry Week. Events took place with representation throughout the forest industry, in Corner Brook, Newfoundland at Margaret Bowater Park. In attendance were local grade 4 & 5 students and their teachers. The Woodlands department talked about the importance of sustainable forestry planning and how far forestry operations and environmental protection have advanced through the century. Kruger's Corner Brook Pulp and Paper mill in Newfoundland and Labrador is unique among Kruger locations due to its extensive land base. This mill is supported by a woodlands department, managing significant forest resources within the Island of Newfoundland. Kruger's Corner Brook Woodlands department plays a major role in the provinces forest industry and in the advocacy of environmental and sustainable practices. All wood fibre for the mill is tracked and monitored through the Sustainable Forestry Initiative (SFI) Forest Management Standard, SFI Fibre sourcing Standard, and ISO 14001. As of this fall of 2024, all fibre is now geolocation referenced from the original cut site locations for the European Union Deforestation Regulations (EUDR) requests. In 2015 the department helped the province acquire the ISO 14001 certified by giving them the management system that is used within the Kruger land base. Thanks to the Canadian Forestry Services for organizing this year's event. It is always nice to have an opportunity to engage future generation with forestry and the role it plays in our province, also to help a new group feel proud of our green industry.

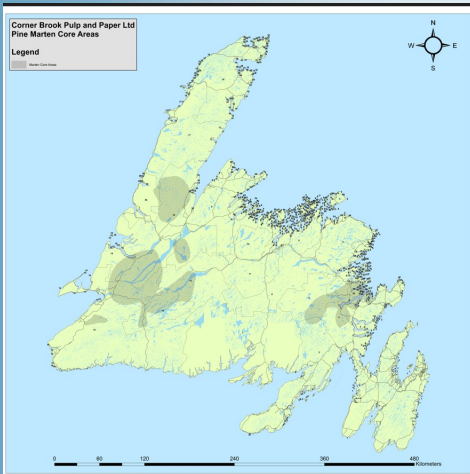


Kim Childs & Trevor Kinden, Supervisors in the Woodlands Department CBPPL



# Newfoundland Marten

## Species at Risk Tracking Across the Land Base



Today, the Newfoundland marten is no longer considered at immediate risk of extinction, thanks to the continued efforts of Corner Brook Pulp and Paper, government agencies, and wildlife organizations. The story of recovery is a testament to the importance of responsible industry practices and collaborative conservation work.

The Newfoundland marten (*Martes americana atrata*) is a small carnivorous mammal endemic to Newfoundland, Canada. It is a subspecies of the American marten, distinguished by its darker fur and smaller population size.

Newfoundland Marten is one of only 14 mammal species native to the Island of Newfoundland. The population geographically isolated, genetically and ecologically distinct.

Once widespread across the island, the Newfoundland marten faced significant declines in the 19th and early 20th centuries due to hunting, trapping, and habitat loss. By the 1970s, the population had dwindled to near extinction, with only a small population in the forested areas of the island's western region.

First considered endangered in 1996, it was one of the first species formally designated under the provincial Endangered Species Act in 2002. Recovery programs in place since the 1990s have supported population growth, resulting in downlisting from Endangered to Threatened in 2007, and then from Threatened to Vulnerable in 2023.

The recovery of the Newfoundland marten is a remarkable story of conservation efforts, and Corner Brook Pulp and Paper Limited played a vital role in its restoration. In the 1980s, recognizing the importance of preserving local wildlife, CBPPL, along with the Newfoundland and Labrador government and various wildlife organizations, began initiatives to protect and restore the marten population. CBPPL contributed to these efforts by promoting forest management practices that supported the natural habitat of the marten.

CBPPL's approach involved sustainable forestry practices that emphasized maintaining a healthy, diverse ecosystem. This included minimizing habitat fragmentation and ensuring the preservation of key forest areas that the marten relied on for hunting and shelter. Additionally, the company worked closely with conservationists to monitor the marten population and gather data to inform further conservation actions.

Through these joint efforts, the Newfoundland marten population began to recover, with monitoring programs showing a gradual increase in their numbers. CBPPL's commitment to environmentally responsible practices and its collaboration with wildlife experts has been instrumental in fostering a more sustainable relationship between industry and conservation, ensuring that the Newfoundland marten can thrive in its natural habitat once again.

Today, the Newfoundland marten is no longer considered at immediate risk of extinction, thanks to the continued efforts of Corner Brook Pulp and Paper,





## Supporting Forest Research in Newfoundland & Labra-

### Birds Canada Putting Newfoundland's Birds on the Map

Since 2021 Corner Brook Pulp and Paper woodlands have been supporting Birds Canada's first ever Bird Atlas for the province of Newfoundland and Labrador. CBPPL partnered with Birds Canada to apply for funding through the Sustainable Forestry Initiatives (SFI) Community grants program. Birds Canada has been successful in obtaining grant money from the SFI to help some of the project and has been mapping out the distribution and relative abundance of bird species breeding on the island of Newfoundland. The Atlas will provide an invaluable tool for wildlife conservation, education and research in the province. The Atlas will provide an invaluable tool for wildlife conservation, education, and research in the province.

For more information visit the Birds Canada website ([www.birdscanada.org](http://www.birdscanada.org)) Or the Newfoundland Breeding Bird Atlas website (<https://nf.birdatlas.ca>)



Jeff Lewis of harvesting contractor Nobles Resources won the Species at Risk Trivia during the Environmental Health and Safety meeting in the spring.



(Above) Katherine Dale Birds Canada, Kim Childs of CBPPL, & Jenna McDermott Birds Canada. Project update meeting fall 2024



Do past and present forest management techniques support pollinators and culturally significant species for Indigenous peoples? How do we adapt practices in the future?



For more information: <https://forests.org/seeing-the-forest-for-the-bees/>

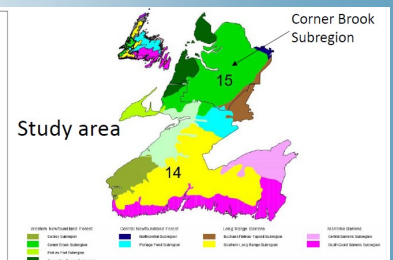
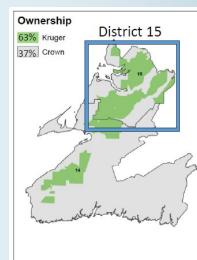


Camouflaged bird recorder placed to record bird mating calls during nesting season. To date, CBPPL Woodlands Department have placed and retrieved 90 recorders across our timber land base and provided printed maps to volunteers.



### Seeing The Forest For The Bees: Researching Plant-Pollinator Relationships in Managed Forests

This collaborative research project will study pollinator and plant diversity through a 35-year view of managed boreal forest. Undertaken by the Memorial University of Newfoundland and supported by the Qalipu First Nations Band, Sustainable Forestry Initiative, and Corner Brook Pulp and Paper. The project will employ a combination of field surveys, flight intercept traps, time-lapse cameras, and data loggers to capture a comprehensive snapshot of plants and associated pollinators across a series of managed forests. Methods of ecology, entomology, botany, western and traditional knowledge. The project aims to advance ecological understanding as well as foster cultural appreciation of key plant species and support future monitoring.





## New Harvest Contractors to CBPPL Land Base:

### Commitment to Environmental Stewardship and Health & Safety

In 2024 we welcomed new harvesting contractors to the CBPPL land base,

With the help from our district planners and superintendents the new contractors have actively worked to embrace CBPPL Environmental Management System, implementing strategies to meet and exceed expectations. They utilize best management practices to protect sensitive ecosystems, reduce soil disturbance, and mitigate the risks associated with harvesting operations. Through careful planning and close collaboration with CBPPL, they have successfully integrated environmental considerations into every stage of the harvesting process.

In addition to environmental standards, health and safety remain a top priority. The contractors are fully committed to the health and well-being of their workers with incorporating comprehensive safety protocols. By fostering a culture of safety, they ensure that every team member is equipped with the knowledge and tools to work in a safe and efficient manner. Regular audits, continuous improvement processes, and proactive measures are helping to create a safer work environment for all involved.

As these contractors continue to grow with CBPPL, they will no doubt plan an integral role in shaping a sustainable future for our land base. Their ongoing efforts are a testament to their professionalism and commitment to upholding the highest standards of environmental and safety practices.



Kirk Lovell, owner of Lovells Logging Ltd



Owner Jeff Stuckless of Pathways Construction with operator Bill Ennis and CBPPL roads tech. Audrina Parsons



## Prompt and Effective Emergency Response by Harvesting Contractors: A Testament to Training and Preparedness

Our harvesting contractors have consistently demonstrated their ability to swiftly and effectively manage fire emergencies on their operations, a direct result of their emergency response training and the invaluable support from the provincial forest fire department. When faced with fire related incidents, these contractors were able to take immediate action, controlling and containing the fire while ensuring the safety of both personnel and the surrounding environment.



Operator awareness, fast action, and on site fire fighting equipment, prevented what could have been a major fire when the dry duff layer started smoking. Operators Rick Terry & Gregory Madore, Mechanic Chad Reid, and Supervisor Andrew Reardon worked to identify hot spots and mitigate fire danger. Fire protection at Massey Drive was contacted and a fire crew was dispatched. When on site, they confirmed their confidence that the fire was indeed fully extinguished and had no need for further action.



### Emergency Response Tests

Operations on Corner Brook Pulp and Papers' land base regularly take part in Emergency Response Tests.

These tests are carried out to help personnel be prepared for an emergency should one occur. Practicing dealing with emergencies promote confident and capable responses as well as regular maintenance of emergency response equipment.

Some of the tests that are scheduled throughout the year include:

#### Health & Safety

- Medical AED
- Medical first Aid
- Man Over Board

#### Environmental

- Fuel/Oil spill
- Forest Fire
- Sedimentation

Contractors also use these tests for proof for CORE certification requirements and discounts on insurance premiums.



When this harvester caught fire the summer in the Upper Humber area, there was quick action to contain the situation by operator Jeff Dennis, Foreman Gerry Turner, & Luke Worthman. With harvesting equipment that was close by all brush was pulled from the ignition zone. Site fire fighting equipment was used and spread was prevented.



The NL Forest Fire department are always contacted during a fire incident and are at the stand by to assist with personal and water bomber support if needed.





Paddy's Pond COs explaining the new forest fire protection gear and scenario's they face when answering a fire related call.



### Training

Newfoundland and Labrador's forest firefighters undergo rigorous training to prepare for the province's challenging wildfire conditions. Their training includes wildfire behavior, suppression tactics, equipment operation, and safety protocols. They learn to use hand tools, pumps, and water delivery systems while also receiving instruction in Fireline construction and controlled burns. Physical fitness is a major focus, ensuring firefighters can handle intense, unpredictable conditions. Many also complete courses in aviation safety for working with water bombers and helicopters. This training equips them to protect communities, wildlife, and vast forested areas from the increasing threat of wildfires.



Water bombers stationed out of Gander put on an outstanding demonstration.

## Canadian Institute of Forestry held AGM in St. John's NL Fall 2024

During the fall of 2024 Woodlands staff had an opportunity to attend the Canadian Institute of Forestry AGM that was held in St. John's Newfoundland. An event that CBPPL was a sponsor of.

During the CIF conference the group visited Paddy's Pond Forestry Depo, where fire crew demonstrated their new fire equipment that they were able to obtain through Federal and Provincial forest fire funding.

Newfoundland and Labrador continues to be an important player nationally with fire fighting assistance:

In 2024, Newfoundland and Labrador extended support to the town of Jasper, Alberta, during the devastating wildfires. Newfoundland and Labrador has developed a comprehensive wildfire management strategy, encompassing both aerial and ground-based firefighting resources:

### Aerial Firefighting Resources:

- **Water Bomber Fleet:** The province operates a fleet of five CL-415 water bomber aircraft, recognized for their substantial aerial wildfire suppression capabilities-the most significant in Atlantic Canada.
- **Planned Enhancements:** In 2024, the government announced plans to repair the existing CL-415 aircraft and acquire two additional "bird dog" aircraft to bolster aerial firefighting operations.

### Ground-Based Firefighting Resources

- **Fire Smart Personnel:** The province maintains a dedicated team of wildfire suppression staff, strategically positioned to respond promptly to wildfire incidents.
- **Equipment Upgrades:** Recent investments include procuring firefighting equipment such as fire trucks, command trailers, sprinklers, weather stations, and protective gear like Nomex suits.

### Training and Coordination

- **Atlantic Wildfire Centre:** Plans are underway to establish the Atlantic Wildfire Centre at Gander International Airport Wildfire Centre at Gander International Airport. This facility aims to provide leadership and expertise in wildfire management, focusing on specializing training, applied science, and data localization.
- **Interagency Collaboration:** As a member of the Canadian Interagency Forest Fire Centre, Newfoundland and Labrador participates in the Mutual Aid Resources Sharing (MARS) agreement, facilitating the efficient sharing of firefighting resources across provinces.

Corner Brook Pulp and Paper plays a role in supporting the Newfoundland and Labrador's wildfire management efforts. As a major stakeholder in the province's forestry sector, CBPP contributes financially to fire suppression initiatives through provincial forestry management agreements and operational levies. Additionally, CBPPL collaborates with government agencies to promote responsible forest management, invest in fire prevention strategies, and ensure sustainable fibre sourcing. All contractors working on CBPPL land base are required to have fire fighting arsenal on the harvest site.

### Education

Newfoundland and Labrador's forest firefighters participate in ongoing education, conferences, and specialized training to stay at the forefront of wildfire management. They attend national and international wildfire conferences to learn about the latest research, technology, and firefighting techniques. Training often includes advance wildfire behavior modeling, incident command system (ICS) certification, and leadership development. Some firefighters pursue specialized courses in drone operations, fire ecology, and climate change adaptation. Collaborative training with other provinces and organizations, such as the Canadian Interagency Forest Fire Centre (CIFFC), ensures they are equipped with the latest knowledge and best practices to tackle evolving wildfire challenges.



Canadian Institute of Forestry  
held AGM in St. John's NL Fall 2024  
Forest Certification for sustainable forestry was showcased



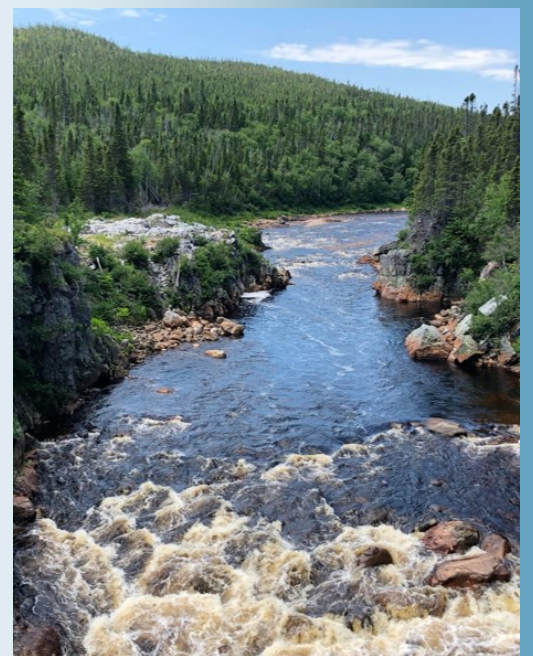
At the 2024 Canadian Institute of Forestry's National Conference and 116th Annual General Meeting, held from September 15-18 in St. John's, Newfoundland & Labrador, Dr. Darren J.H Sleep, Lead Scientist at the Sustainable Forestry Initiative (SFI), delivered a compelling presentation titled "The Role of Forest Certification in Climate Adaptation and Mitigation."

Dr. Sleep emphasized the critical importance of forest certification standards, such as those implemented by SFI, in promoting sustainable forest management practices that contribute to both climate adaptation and mitigation. He highlighted how these certifications ensure responsible forestry operations, enhance ecosystem resilience, and support carbon sequestration efforts.

Since its inception in 1995, the Sustainable Forestry Initiative (SFI) has mandated that its program participants invest in forest productivity, biodiversity, and climate change. This commitment has led to cumulative investments exceeding \$2 billion as of 2022, underscoring SFI's dedication to advancing sustainable forest management practices across the land base.

Dr. Joe Bowden's project, *Seeing the Forest for the Bees*, based out of Corner Brook, has benefited from scientific funding supported through SFI-certified land bases. This research project, which studies pollinator and plant diversity in managed boreal forests, aligns with SFI's broader commitment to advancing biodiversity conservation and sustainable forestry practices. By collaborating with partners such as Corner Brook Pulp and Paper Limited and the Qalipu First Nation, the project exemplifies how SFI's investment in scientific research contributes to local ecological understanding and sustainable land management.

Transportation of wood to CBPPL has changed over the past 100 years. In Canada, the responsibility for water management is shared by the federal, provincial, and municipal governments, and in some instances, by the territories and by aboriginal governments under self-government agreements. Transportation of round wood via water ways is now a way of the past in Newfoundland and Labrador.







Trucker John Bowers demonstrates how to use the unwrapping station in the mill yard.

All new trucks to the wood yard receive a safety orientation that includes a demonstration on how to use the unwrapping station.

## Unwrapping Station

New Safety system in Corner Brook Pulp & Paper Yard

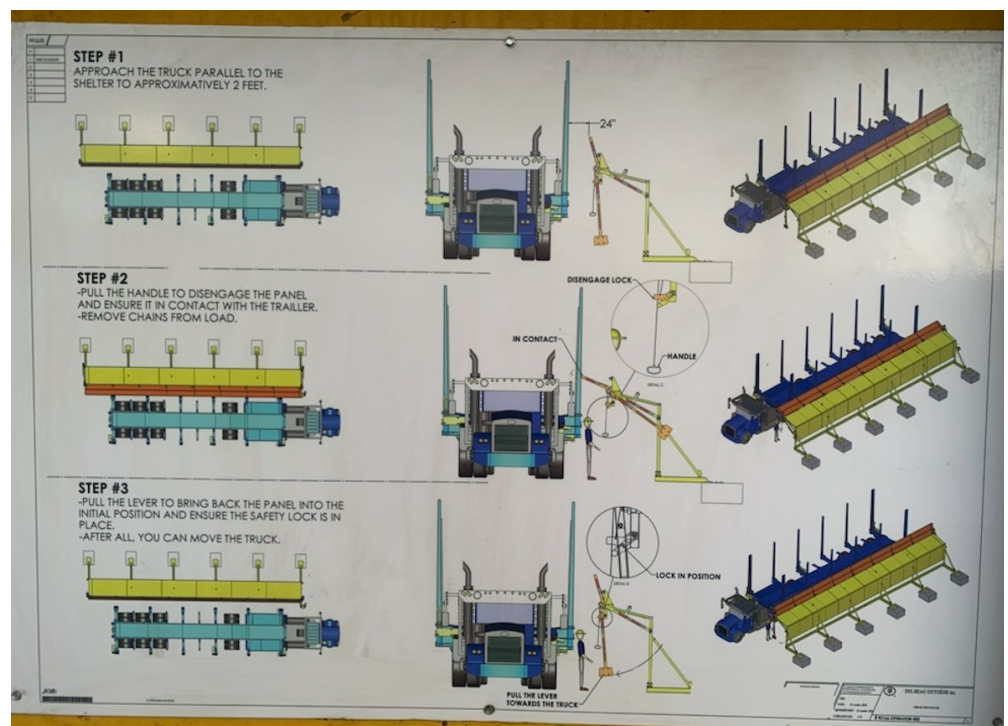
Over the past few years, Corner Brook Pulp and Paper Limited has been actively improving trucking operations to enhance efficiency, reduce emissions, and prioritize safety. Among these efforts, a major shift in 2023 saw the transition from legacy cross-pile trailers to shotgun-load trailer. This transition not only improved flexibility in transporting wood of varying lengths between sites and companies but also supported a backhauling system—an initiative aimed at reducing transportation emissions.

Furthering its commitment to sustainability, CBPPL partnered with FPIInnovations, a private not-for-profit organization specializing in solutions for the Canadian Forest Industry, to introduce changes to allowable gross vehicle weight (AGVW) for two truck configurations on Newfoundland and Labrador highways. This pilot program significantly reduced greenhouse gas (GHG) emissions—equivalent to removing approximately 135 passenger vehicles from the road.

Beyond environmental benefits, CBPPL has also prioritized the well-being of truck drivers. One major concern has been the soft muscle injuries associated with securing loads of wood using heavy chains and straps. To address this, CBPP rolled out new lightweight cords as a replacement, easing the physical strain on drivers and improving safety.

The company took another significant step forward in November 2024 with the installation of an unwrapping station in the mill yard. This safety system was designed to protect truckers from the potential hazard of round wood falling off their loads while they unwrapped their trucks. The station adds an extra layer of protection, ensuring that drivers can safely remove their load-securements without the risk of injury from falling round wood.

CBPPL's ongoing initiatives reflect its commitment to innovation, environmental responsibility, and the safety of those who keep its operations moving. By continuously adapting to industry advancements and prioritizing workers well-being, we set a strong example in safe forestry logistics.





## Environmental Good Catch: Pathways Construction Restores Access to Cabin Owners on Butt's Pond Logging Road

On November 21st, heavy rains caused significant washouts along the Butt's Pond logging road, a critical access route for local cabin owners. Torrential rains washed out sections of the road, cutting off access and leaving several cabin owners stranded.

Recognizing the urgency of the situation, *Pathways Construction* swiftly responded by bringing in an excavator to restore the road. Their team worked efficiently to replace damaged culverts, refill wash-out sections, and reinforce the roadway. In addition to immediate repairs, they took proactive measures by clearing debris from existing culverts and deepening ditches to improve drainage, reducing the risk of future washouts.

This rapid response ensured safe passage for cabin owners. Pathway Construction's efforts exemplify the importance of timely intervention in protecting both local communities and natural landscapes from the impact of extreme weather.

For cabin owners in the Butt's Pond area, Pathway Construction's dedication to accessibility and environmental stewardship was a much-appreciated good catch.



## Corner Brook Pulp and Paper Woodlands' help support data collection for Memorial University researcher.

Memorial University Doctoral dissertation student, Lucas Garica, did a site visit to Corner Brook Pulp and Paper west coast harvesting operation. He is collecting data for his research project entitled "Gender Parity in the Forest Sector: Identifying barriers and opportunities through collaborative research".

The project is partnered with the Newfoundland and Labrador Forest Industry Association (NLFIA) and Newfoundland and Labrador Organization of Women Entrepreneurs (NLOWE).

By supporting Lucas, it also helps fill the SFI® requirement of supporting forest research projects, as well as the requirement to support diversity within the workplace.

This was Lucas's first time being on a Newfoundland harvesting operation. Lucas also attended the Canadian Institute of Forestry's AGM the fall in St. Johns and talked about his experience on CBPPL harvesting site and the information he obtained from this part of his research.



Major's Contracting Jim Reid with Doctoral student Lucas Garica



## On site Emergency Response Drills

Emergency response tests are practiced regularly with various themes ranging from environmental to medical emergencies. Lovell's Logging Limited performed a medical emergency response test in December. The scenario was an operator had slipped on wet tracks while exiting his machine with a possible leg break. Woodlands staff Jeff Decker & Micheal McCarthy helped run through the scenario and the ERT protocol with contractor employees Kevin and Thomas.





## Gros Morne National Park Partnership with Reforestation

Parks Canada staff contacted CBPPL to collect cones from one of our active harvest sites in the early fall of 2023 for their forest restoration project.

In 2024, Gros Morne National Park advanced its program to address ecological imbalances caused by over-browsing from a previously hyper-abundant moose population. Building on prior initiatives, the park collaborated with Replant.ca Environmental to plant approx. 300,000 trees between August and early September. The large-scale planting targets areas severely affected by over-browsing, aiming to restore forest health and biodiversity.

To support these restoration efforts, the park continued its moose population management program. For the 2024-2025 hunting season, 500 licenses were issued for Gros Morne National Park, with an additional 75 not-for-profit licenses available to registered organizations.



### What is the spray Btk?

*Bacillus thuringiensis* var. *kurstaki* is a naturally occurring bacterium used as a biological insecticide. It specifically targets caterpillars of moth and butterflies, including the spruce budworm, cabbage looper, and other pests that feed on plants.

Btk is widely used in both forestry and agriculture:

- **Forestry:** It is applied aerially to control outbreaks of defoliating insects like the spruce budworm while minimizing harm to non-target species.
- **Agriculture & Gardening:** Is commonly used on crops like cabbage, broccoli, and other vegetables to control caterpillar pests without harming beneficial insects, humans, or animals.

Btk works by producing toxins that, when ingested by susceptible insects, disrupt their digestive systems, causing them to stop feeding and eventually die. It is considered safe for humans, pets, and pollinators like bees.

## Forest Health Debate from Provincial Boundaries into the National Park

The Newfoundland and Labrador provincial government and Gros Morne National Park have taken different approaches to managing the spruce budworm outbreak on the Island.

### Provincial Government's Early Intervention Strategy (EIS):

The NL government continues to participate in an Early Intervention Strategy (EIS) to control the spruce budworm outbreak. The EIS is a proactive approach at reducing budworm populations before they reach outbreak levels, using targeted aerial spraying of a biological insecticide (Btk) to protect valuable forests. The strategy is biased on research indicating that early intervention can prevent widespread defoliation, mitigate economic losses in the forestry sector, and reduce long-term ecological impacts. The province has collaborated with partners, including CBPPL, Natural Resources Canada and the Canadian Forest Service, to implement this strategy.

### Gros Morne National Park's Position:

Parks Canada, decided not to participate in the EIS within park boundaries. The agency's decision was based on its mandate to allow natural ecological processes to take place unless intervention is required to protect species at risk of other critical conservation values. Parks Canada also considered that the spruce budworm is a native species, and outbreaks are a natural part of forest dynamics that contribute to ecological renewal. Additionally, by the time discussion took place, the budworm population in the park had already reach high levels, making early intervention less effective.

Despite these differing approaches, the provincial government and Parks Canada continue to collaborate on monitoring and research effort to assess the impacts of the outbreak and improve future forest management strategies.



## College of the North Atlantic Forestry Technician Program



Class of 2024 CNA Forestry Technician students the Crescent Pond Operating Area.

Corner Brook Pulp and Paper Limited (CBPPL) and Northwest Forest Resources Limited hosted the 2nd year Forest Resources Technician class site visit and tour of an active winter harvest operation in Crescent Pond.

This tour is a curriculum activity in the Forest Harvesting II course of their program. As part of this course, students study logging systems and machine configurations with an emphasis on productivity, environmental performance, and safety. Students were exposed to harvesting equipment and given the opportunity to interview operators and supervisory staff on the forest operations.

In their future roles as forest technicians, some graduates may be employed in planning or supervising such operations. To this end, it is important that they get exposure while training at CNA. The students in the photo above graduated in Spring 2024.

CBPPL is longstanding supporter of the Forest Resources Technician program lending support to CNA faculty and students through: the use of facilities, such as the woodyard in Corner Brook; tours of the paper manufacturing facility; funding scholarships; hosting silviculture and harvesting tours; offering insight and support to CNA through guest lecturing, sharing of knowledge, provision of data\information to support our field-based training; actively participating in the FRT PAC, and supporting the annual CNA Tree Planting Service Learning project (linked to support for the Silver Ring Ceremony through the Canadian Institute of Forestry). As another example of our support, CBPPL has formally volunteered to designate a well-used CNA training site in Crescent Pond as a "Special Conservation Area" to protect a unique training area planted with an exotic spruce (Sitka Spruce).



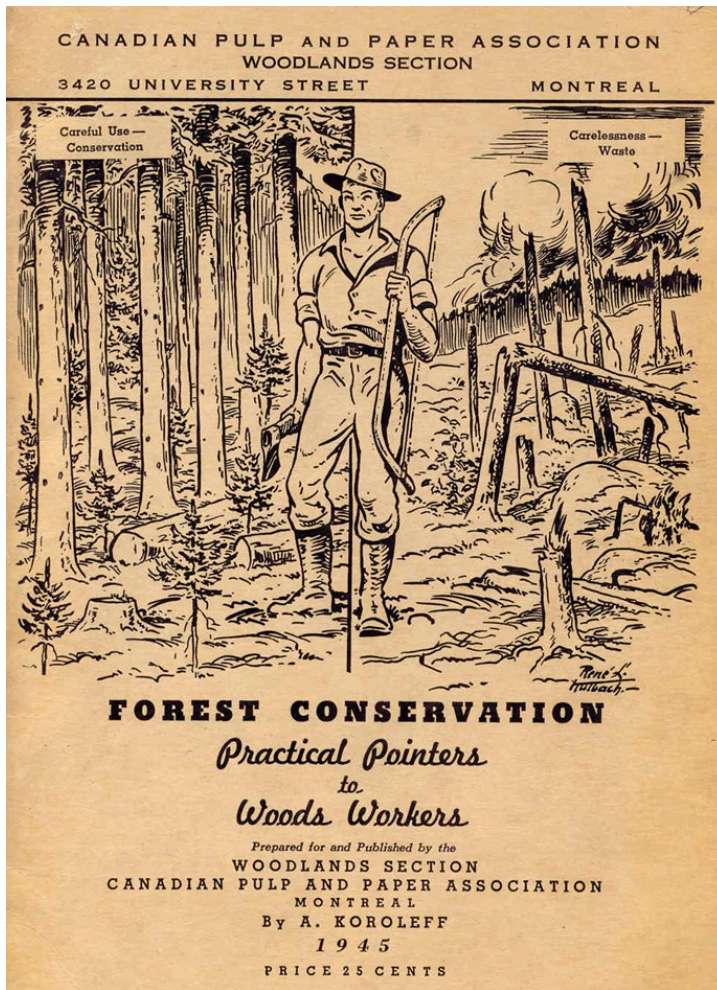
The Forest Resources Technician program at the College of the North Atlantic includes NL Timber Scaling certification as part of the curriculum.

The provincial government's Chief Scaler spends a day in the CBPPL mill yard with the students before certification.

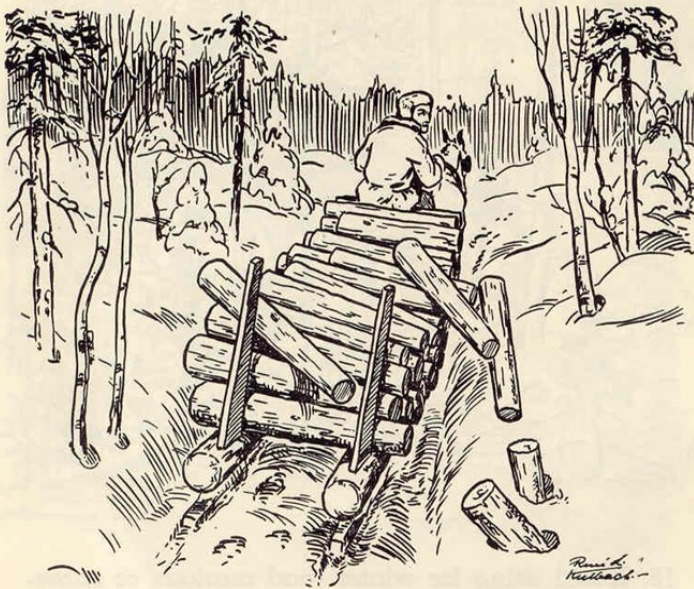




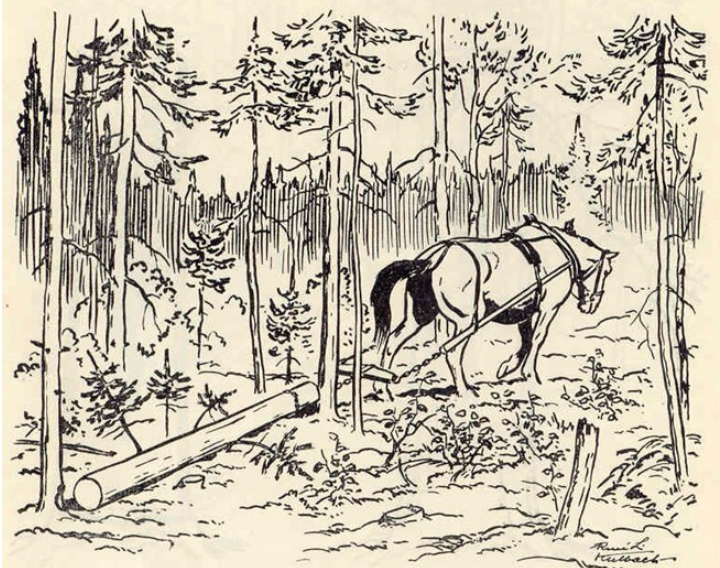
## Best Management Practices From the Past With Themes That Still are Practiced Today



1. Small trees of valuable kinds are needed for the next crop of wood. Treat them with care. Given a chance they will grow into big trees.



20. Load so that no wood will be spilled and make sure that no good wood is left behind.



18. Drive your horse carefully, when skidding, to avoid damage (as shown in the picture) to young growth and trees left uncut. Careless driving does not pay and is too hard on the horse.



# Kruger Proudly Supports Students



## Planting for CIF Silver Ring

Every year CBPPL supports a tree planting activity for the College of the North Atlantic on the land base. This day gives the students the opportunity to obtain hands on experience, as well as raise money to go towards their graduation with the Silver Ring Ceremony with the Canadian Institute of Forestry (CIF) in March. Fall of 2024 the CNA students planted an area of 1.3 ha, with an overall quality of 93.4% based on student quality assessments. They used a 50/50 species mix of Black Spruce bS and White Spruce wS. In total there were 2000 trees planted by the students at this event.



Jennifer Kelly

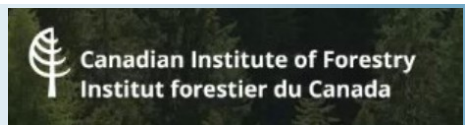


Kay Narinesingh



Tyler Turner

Student Laura Green, with Academy Canada's Occupational Health and Safety program, went on a forestry field visit to see how health & safety programs run in the woodlands. Laura learned importance of radio contact and communication traveling to and from site, as well as on location. She got to take in various types of harvesting and transportation equipment and climbed up into the drivers seat of a harvester to understand the ergonomics of getting in and out of these types of machines. Her inquisitive nature will serve her well in her future career in this field.



IN THE PAST 20 YEARS, KRUGER AWARDED MORE THAN  
\$80,000 IN SCHOLARSHIPS  
TO THE COLLEGE OF THE NORTH ATLANTIC  
IN CORNER BROOK

## College of the North Atlantic Scholarships

### CBPPL ENVIRONMENTAL SCHOLARSHIP \$1300

-Cameron Duff, Environmental Engineering Technology (Co-op)  
-Jennifer Kelly, Environmental Engineering Technology (Co-op)  
-Kay Narinesingh, Environmental Engineering Technology (Co-op)

### CORNER BROOK PULP & PAPER SCHOLARSHIP \$500

-Tyler Turner, Forestry Resources Technician

## Highlight on a Woodlands Hazard

Chain shot is a hazard on all logging operations. It can cause serious injury or death to the machine operator, ground personnel and bystanders. Chain shot occurs when the chain breaks within the harvesting head and ejects a piece or pieces of chain at high velocity (similar to the speed of a bullet).

## Major Chain Shot Rules

1. Ensure all chain catchers and chain shot guards are in place and in good condition
2. Always follow the manufacturer's recommendations for the operation & maintenance of saw chain based on cutting systems to minimize risk of cutting system failure.
3. **Never engage in a cut whereby the operator, ground personnel, and or bystanders are located in the shot cone zone.** Always perform cuts as close to the ground as possible.
4. Inform all crew and bystanders/visitors of the dangers of chain shot through site inductions and toolbox meetings
5. 19 mm or thicker polycarbonate front windshields on all harvesters and processors.





## Significant Environmental Aspects

### GHG Emissions & Climate Change

Soil Disturbance – Transportation of Round Wood



### Fire

Forest Fire



### Release to Water and Land

Fuel Spill – Garbage – Water Quality



### Natural Resources Management

Fibre Recovery – Fibre Utilization – Visual Quality



## Significant Environmental Aspects

2024 seen a refresh of CBPPL SEAs to now include GHG Emissions & Climate Change, and Fire.

Identification and evaluation of significant environmental aspects (SEAs) is the most fundamental part of ISO 14001 International Standard. To understand the environmental aspects and impacts is one of the key success factors of implementing an ISO 14001 Environmental Management System. In the language of ISO 14001, “an environmental aspect is an element of an organization’s activities, products, or services that has or may have an impact on the environment.” Annual continual improvement programs are built around the identified SEAs.

Corner Brook Pulp and Paper submits planning documents to the Provincial Government for each Management District in which the Company operates. These 5-Year Operating Plans identify where, when, and how, forest management activities will occur in each district.

For each year of this 5-Year Operating Plan, an Annual Operating Plan (AOP) is also submitted for approval. This plan includes information on road construction, stream crossings, time and method of harvest, and a complete description and map of timber stands to be harvested.



## Corner Brook Pulp and Paper Limited

### Wood Yard

## Comprehensive Truck & Trailer Safety Inspections

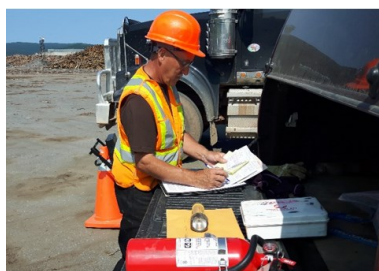
Trucks that enter the wood yard at Corner Brook are subject to comprehensive truck and trailer safety inspections. This is done to ensure total safety and efficiency of the fleet according to the Department of Transportation (DOT) regulations. During the month of September 43 trucks were inspected.



## Inspection Type of Deficiencies

- **Minor**
  - ✓ Fire extinguishers, marker lights, reflective tape, etc.
- **Serious**
  - ✓ Headlights, taillights, signal lights, windshields, air leaks, etc.
- **Very Serious**
  - ✓ Fifth wheel, steering components, brakes, damaged chassis, worn out tires, brake lights, load binding equipment, drive line components, loose air tank, loose fuel tank, etc.

When a deficiency is found a directive for its repair is issued. In the event that a very serious deficiency is identified, the truck is taken out of service.



Norm Osmond performing truck inspections in the mill wood yard







Roman



Nathan & Nash



Carrie, Mackenna, Frankie, Nash, & Emily



Mackenna & Frankie



Emily



River & toad



Kyle, Brady, and Roman



## Community Engagement

Tree Planting with the 54th Corner Brook Beavers & Cubs group is always a riot! This has become an annual event that we look forward to every year.

It was a beautiful fall day when the group got out to plant. Trees were planted on a summer harvest operation into Logger School Road area just a couple minutes outside of Corner Brook. The woodlands department helped with a planting location, basic direction of how to plant a tree and how to check for quality control. CBPPL also helps fuel the fun with hot chocolate and loads of marshmallows! It was another great opportunity to get the kids out in the fresh air, learn about their natural environment and the forestry industry (while catching some toads and fishing some boots out of the mud!).

The kids smiles say it all.

Corner Brook Pulp and Paper Woodlands

Kruger

**SPRING MEETING**

Spring Meeting & Public Information Day  
Centre for Research & Innovation Building - April 26, 2025  
10:00 am - 4:00 pm

Booths and Presentations on:  
Species at Risk, Culvert and Bridge Installations, Fire Pump Demonstrations, SFI and FSC Certifications, Forest Sector Importance and much more.

Proudly Supported by:

For More Information Contact: [Jessica.Galliot@kruger.com](mailto:Jessica.Galliot@kruger.com)



Corner Brook Pulp and Paper  
Employees ~500 people in three divisions:

300 in the Mill  
175 in Woodlands  
25 at Deer Lake Power

Labour income impacts (direct, indirect, and induced) of CBPPL operations totals:  
**132.47 million to the provincial economy** (CBPPL, 2023).

Runs 2 paper machines requiring 680,000m<sup>3</sup> of wood fibre.

Produces 250,000 tones of newsprint annually.

The woodlands department is responsible to supply all wood fibre needed for operations to the mill yard.

Besides newsprint production, CBPPL also supply the needs of three large local sawmills that operate throughout the year, and the newsprint mill receives chips in return.

All wood fibre for the mill is tracked and monitored by the Woodlands Department through 3 certification standards:

Sustainable Forestry Initiative's (SFI) Forest Management Standard

SFI Fiber Sourcing Standard

ISO 14001 International Standard Organization

All geographic location of our fibre is tracked as per the European Union Deforestation Regulations (EUDR) as of Dec 2024 and fibre Geo-reference in GeoJson files are available upon request to our purchasers.

Your comments on our environmental performance, or suggestions on how we might improve our operations are always welcome.  
To comment or to request information on CBPP Woodlands, please contact:

Jessica Galliot  
Environmental Management  
Representative

Woodlands Department  
Corner Brook Pulp and Paper Limited  
P.O. Box 2001, Corner Brook, NL  
A2H 6J4

Tel: (709) 637-3426  
Email: [jessica.galliot@kruger.com](mailto:jessica.galliot@kruger.com)

[www.cbppplwoodlands.com](http://www.cbppplwoodlands.com)

## Forest Management - Planting



- Plant 2.1 million trees annually

Old forestry back tank Jessica Galliot found while doing block layout in Lady Slipper Road, out side of Corner Brook. When she showed the picture to some operators on site one of the young crew member asked "did you take it?", when she said no and was asked "why not?!" Brad, one of the older crew members, who was a woodlands retrain from the manual cutting days to mechanical logging replied "It's a memorial to the old days". If you spend much time in the woods in Newfoundland you can still find remanence of the people and their hard work that has shaped the pulp and paper industry for more than 100 years.

