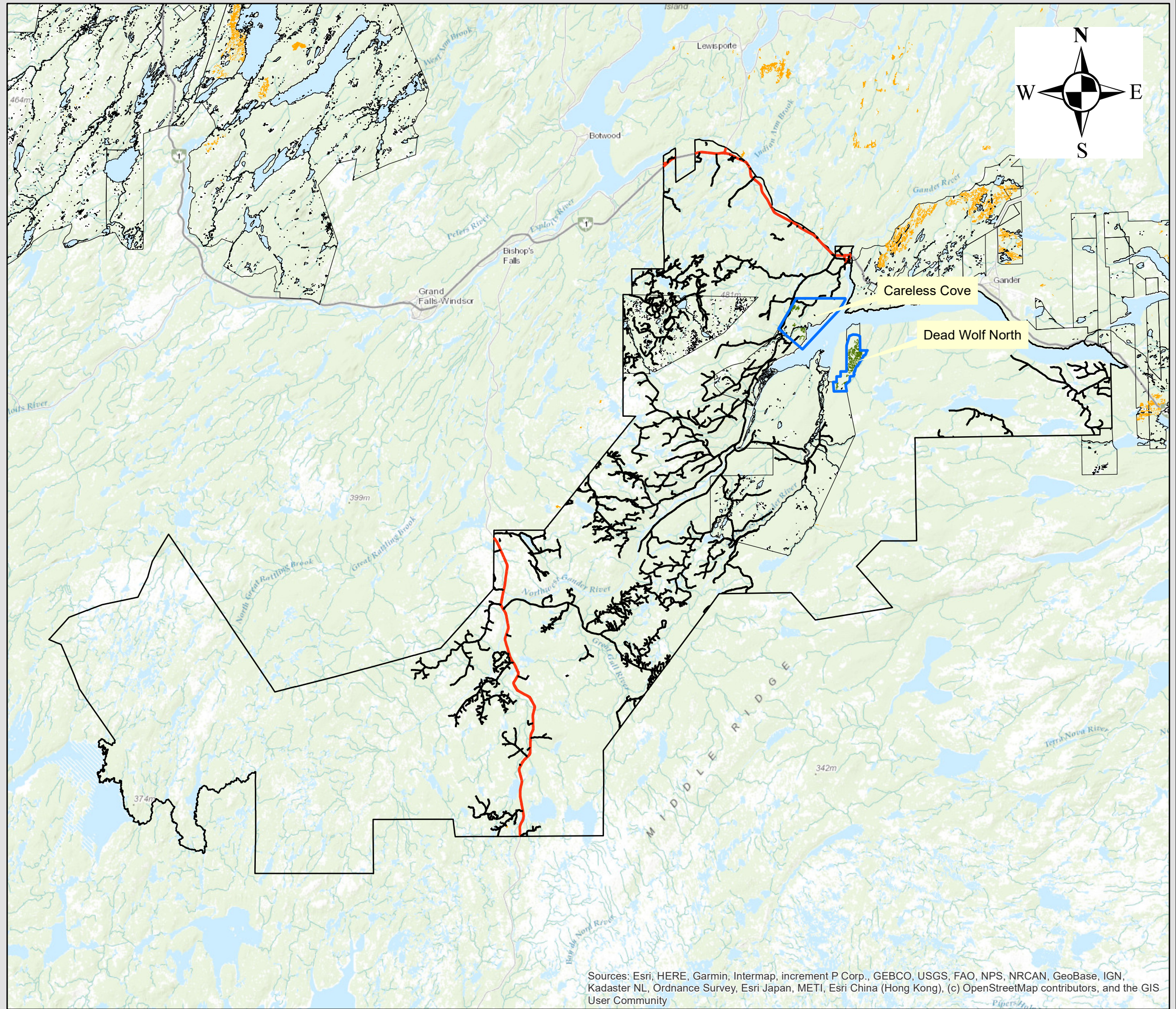
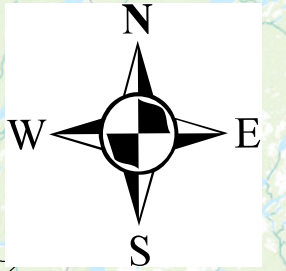


**Corner Brook Pulp and Paper Ltd.
Forest Management District 06
Five Year Plan (2022-2026)**

Legend

- Highways
- Resource Roads
- 5YP 27-31
- CBPPL Tenure
- Proposed Harvestables 27-31
- Cutovers

1:500,000



K Number	5YP Operating Area
K-06-03	Careless Cove
K-06-18	Deadwolf North

Sources: Esri, HERE, Garmin, Intermap, increment P Corp., GEBCO, USGS, FAO, NPS, NRCAN, GeoBase, IGN, Kadaster NL, Ordnance Survey, Esri Japan, METI, Esri China (Hong Kong), (c) OpenStreetMap contributors, and the GIS User Community