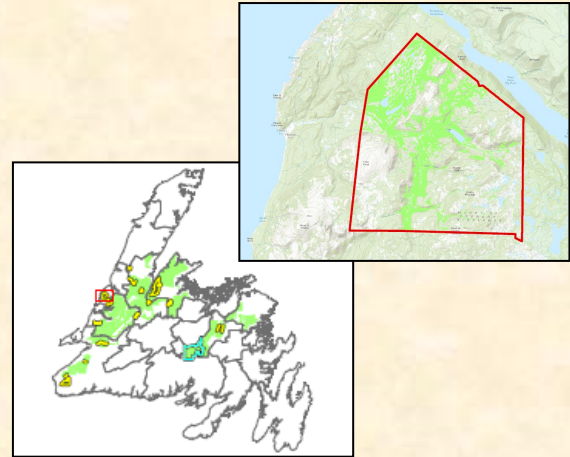


# CHIMNEY COVE

Adjacent to Gros Morne National Park, near Trout River Pond, the Chimney Cove area encompasses 10,229 ha in western Newfoundland. A regional landmark, the International Appalachian Trail passes through this beautiful landscape.



Chimney Cove is part of a large, intact landscape within the Western Newfoundland Forest ecoregion. The landscape consists of barrens, wetlands, and balsam fir stands. There are smaller areas of hardwoods and pine. Flora such as the endangered feathery false Solomon's seal can be found here.

The site is valued both for its scenery and for recreation. Chimney Cove is a historic community that has been abandoned. However, there continues to be active cabins in the area. Recreational activities include firewood harvesting, livestock grazing, rabbit snaring, and other small game hunting.



As this site is part of the Joint Voluntary Protected Areas Agreement in partnership with CPAWS, we are committed to supporting local recreational activities, and have pledged to defer commercial harvesting and road building in this area. It is our commitment to residents to allow traditional recreation to continue within the Protected Area.

Photo Credits: Adrian Ricketts