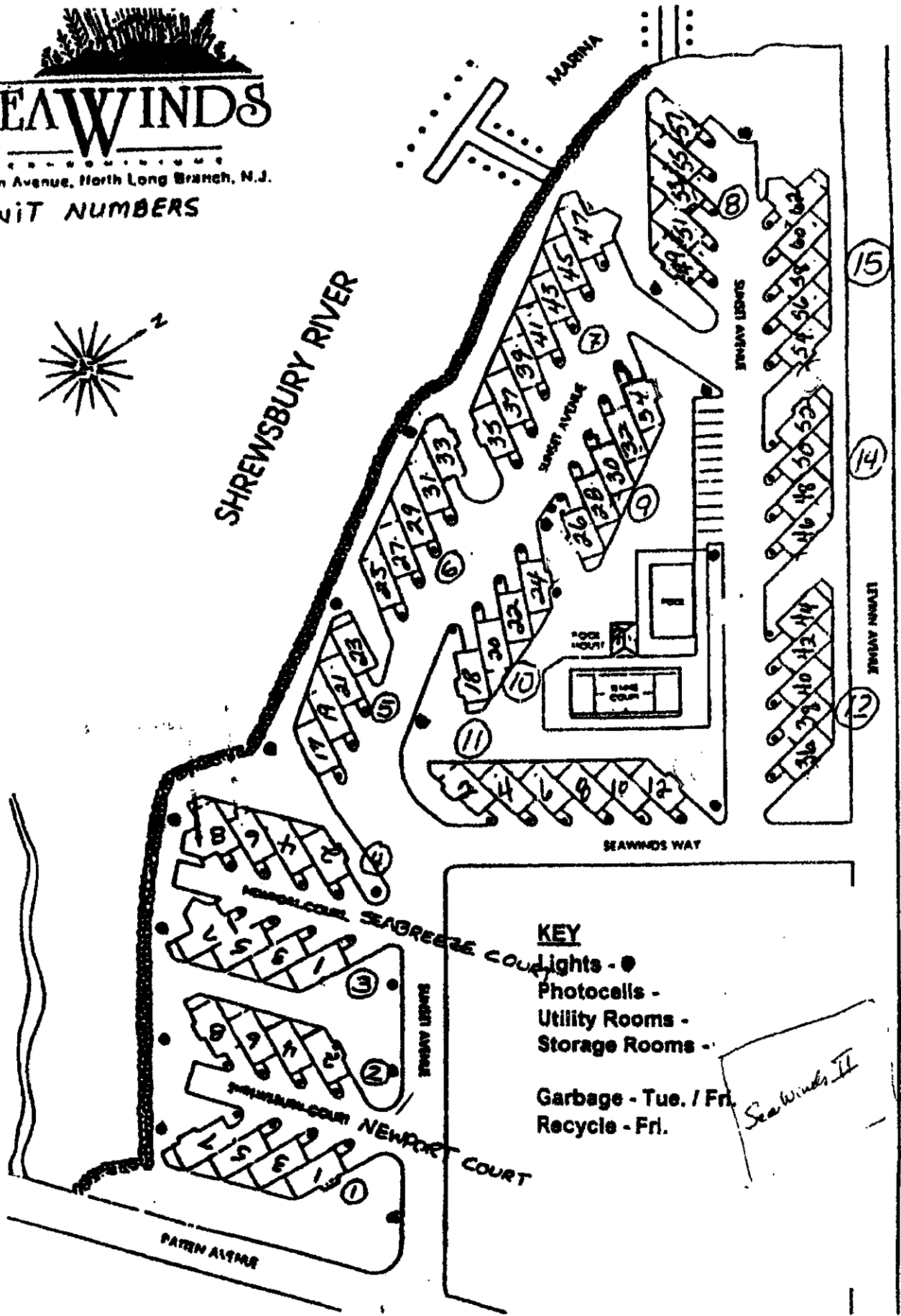
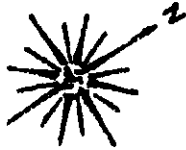


SEAWINDS

Patten Avenue, North Long Branch, N.J.

UNIT NUMBERS

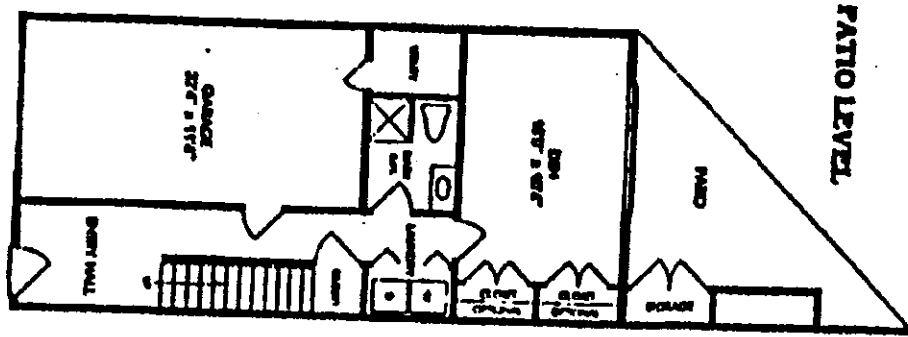


KEY

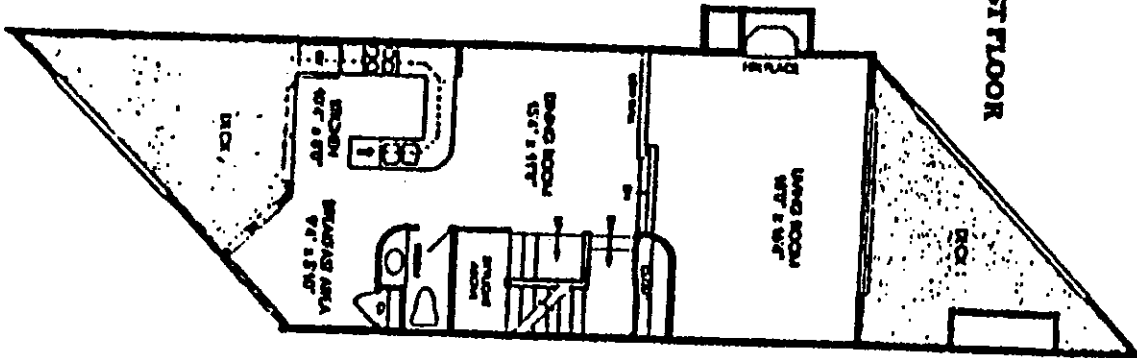
- Lights - ●
- Photocells - ○
- Utility Rooms - □
- Storage Rooms - ▭

Garbage - Tue. / Fri.
 Recycle - Fri.

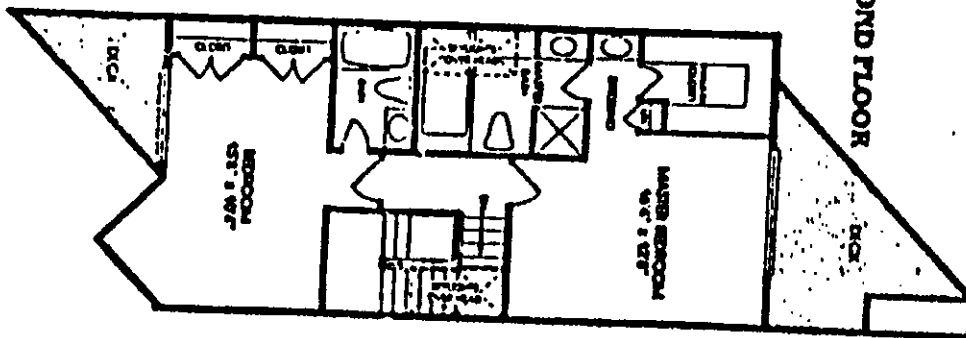
Seawinds II



PATIO LEVEL



FIRST FLOOR



SECOND FLOOR

TYPE A UNIT

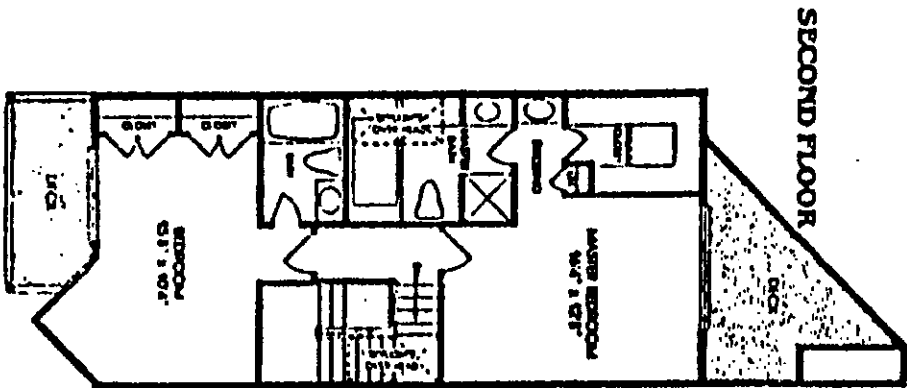
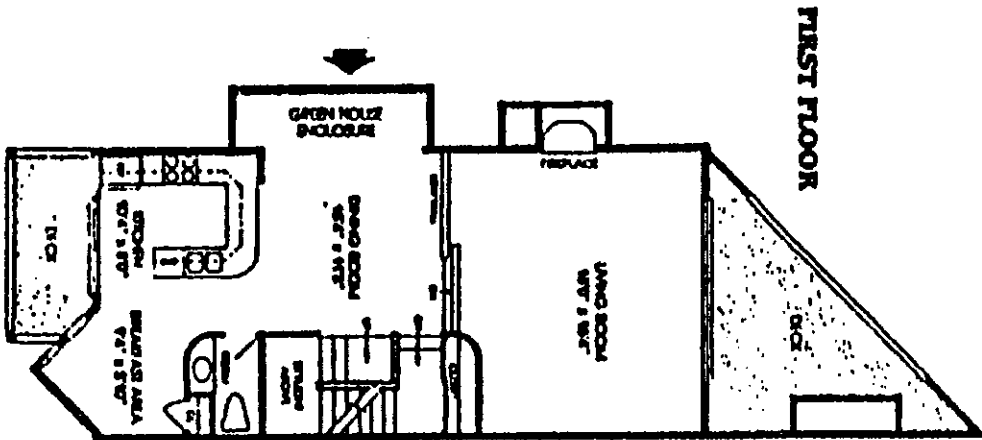
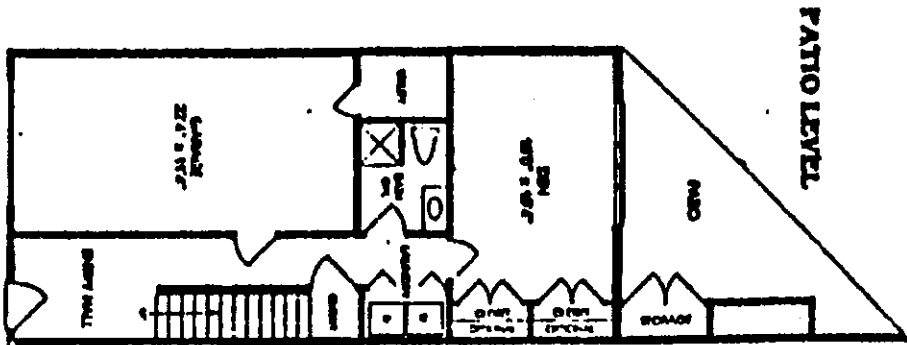
4506 121 807

	<p>3/22/84</p> <p>7898K</p>	<p>SEAWINDS - A CONDOMINIUM</p> <p>LONG BRANCH, N.J.</p>
--	-----------------------------	---

TOMAINO & TOMAINO ARCHITECTS & PLANNERS, P.A.
 136 Brighton Avenue • Deal, N.J. 07723 • 201 531 2282

Paul H. Tomaino
 STATE OF NEW JERSEY
 COUNTY OF MONMOUTH
 COUNTY CLERK
 COUNTY OF MONMOUTH, N.J. 07042

MASTER BILL BOOKING CONTINUED



TYPE C UNIT

4506 1st 800

<p>7998K</p>	<p>SEAWINDS - A CONDOMINIUM LONG BRANCH, N.J.</p>	<p><i>Frank</i></p> <p>Frank P. Tomaino, P.A. 36 Brighton Avenue Deal, NJ 07723</p>
--------------	---	---

MASTER FILED EXHIBIT C CONTINUED