

The background is a vibrant, abstract composition of various shapes and patterns. On the left, there's a large red shape with a teal oval on top and a pink dotted area at the bottom. In the center, a yellow shape is filled with a white plus sign pattern. On the right, a teal shape with white wavy lines is positioned above a yellow shape with a dotted pattern. The overall palette includes teal, red, yellow, pink, and grey with various textures like dots, wavy lines, and zig-zags.

The Student Life Alliance

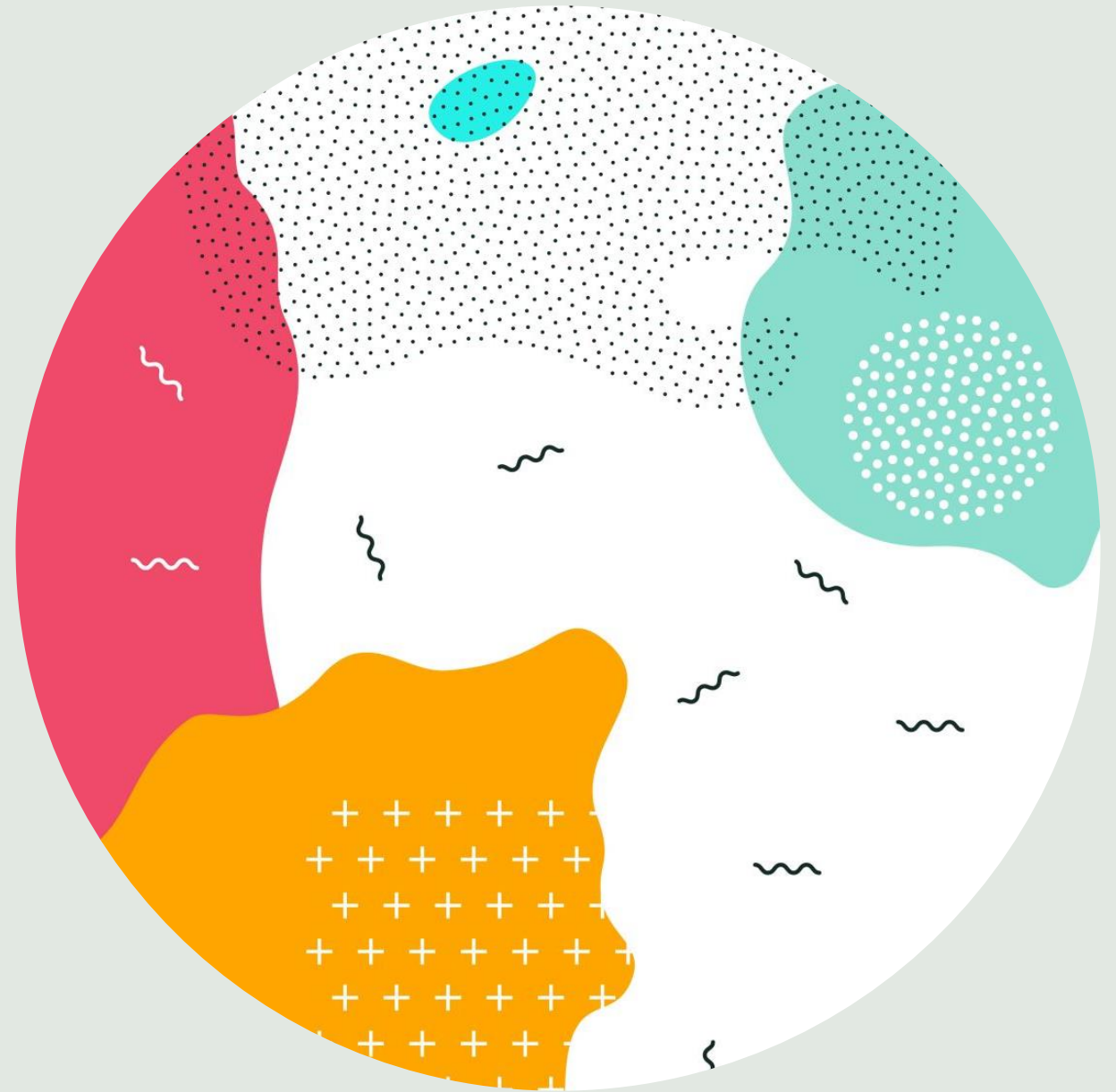


Here for the life supports our
homeless and at-risk
students need in an
unpredictable world

We believe every student
has potential worth
nourishing and investing in.



We know some students
are experiencing
homelessness and trauma
while going to school.







1. Food packs
2. Hygiene kits
3. Backpacks and school supplies
4. New uniforms
5. New casual clothes
6. New sneakers
7. A Journal or Book
8. Laundry service
9. New socks and underwear
10. Gift cards
11. Florida State ID
12. Bus Passes
13. Transportation & Gas
14. Housing

Here is how we meet our students needs

| Supplies | Provider |
|--|--|
| Weekend Bags of Food | Living Hungry |
| Backpacks | Care Ministry |
| Hygiene Kits with Brands kids want | Living Hungry, Giving Closet, St. Vincent Ferrer |
| School Supplies Sets | Red Apple Supplies |
| New Uniforms wardrobe | Giving Closet |
| New Casual Clothes wardrobe | Giving Closet |
| Laundry Service | Giving Closet, Launder with Love |
| New Sneakers | In Jacob's Shoes |
| New Socks & Underwear | Living Hungry |
| Social Emotional Book Club & Packs | Literacy Coalition PBC, SEFLIN, Carol Berger (donor) |
| Florida State ID & VIP appointment | Anne Gannon Tax Collector Office |
| Publix Gift Cards, Gas Cards or Bus Passes | Donors |





We see a future where
children and teens
experiencing trauma have
all the support they need
to succeed.

We are a group of people in over 40
agencies who care about our
students well being. We are the
Student Life Alliance

The background is a vibrant, abstract composition of various shapes and patterns. It features large, organic shapes in shades of teal, red, yellow, and grey. The grey areas are filled with different patterns: a fine dot pattern, a larger dot pattern, and a cross-hatch pattern. There are also wavy lines, small black squiggles, and a central icon of two overlapping leaves. The overall aesthetic is modern and energetic.

By working together - providers,
schools, donors and recipients - we
form a RESOURCE NETWORK

We collaborate - one team - for the good of our
students as the Student Life Alliance.



Student Life Alliance Membership

Anne M Gannon Tax Collector Staff

Boca Helping Hands

Cason United Methodist Church

Catholic Charities PBC

Celina Kupferman Rooms to Go

Communities in Schools

Compass

Daughters of the American Revolution(DAR)

Delray Beach Initiative

Delray Beach Initiative to End Homelessness

Delray Beach Library

Delray Elks and Antlers

Eat Better Live Better

Family Promise

Hospitality Helping Hands

In Jacob's Shoes

James Chess Club

Jesus Lounge Ministry

KOP Mentoring Network

Let's Talk Period.

Living Hungry

Palm Beach County Office of Community Revitalization

PBC School District School Food Service

Positive Promotions

SEFLIN Library Network

South Florida Hunger Coalition

Stand Down

Sysco SEFL

The Avenue Church

The Box Gallery

The Education Foundation

The Giving Closet Project

The Lords Place

Vita Nova

The In Crowd

Communities in Schools



- What can we do for you?
- ***Please let us know what your homeless and McKinney Vento students needs are?***
- Let's get their needs met together.
- We are here for you.

Co-Chairs, Maura Plante & Jennifer Smith

Secretary, Jackie Ermola

Treasurer, Founa Badet

Fiscal Agent, Teresa Dumbrowsky

- Contact Email: Maura@livinghungryorg
- Contact Text: 561-400-2712