



Group of Seven

A Collection by:

images
by **FRAMEMAKERS**

416-665-8215

90 Martin Ross Ave, North York, ON, M3J 2L4

imagesbyFrameMakers.com

Table of Content

Page 3: Matte & Glass / Triples Pricing

Page 4: Textured Pricing

Page 5: Canvas Pricing

Page 6: A. J. Casson

Page 16: Arthur Lismer

Page 20: A. Y. Jackson

Page 27: Clarence Gagnon

Page 31: Edwin Holgate

Page 33: Emily Carr

Page 37: Frank Johnston

Page 40: Franklin Carmichael

Page 45: Frederick Varley

Page 48: J. E. H. MacDonald

Page 53: Lawren Harris

Page 62: Lemoine Fitzgerald

Page 64: Tom Thomson

Matte and Glass

Small 20x21
Price Code "C"

Large 34x38
Price Code "K"

Triples

Horizontal or Vertical
20x42
Price Code "K"

Choose any three horizontal
images for your own personalized
Triple.

Three Framing Options



Mahogany



Black with Oak Lip



Chardonnay

ALL IMAGES ARE AVAILABLE IN ALL FORMATS

Textured

Small 13x15
Price Code "AQ"

Large 25x29
Price Code "E"

Extra Large 34x38
Price Code "M"

Two Framing Options



Black



Espresso

ALL IMAGES ARE AVAILABLE IN ALL FORMATS

Canvas

20x24 Gallery
Wrapped
Price Code "AD"

30x36 Gallery
Wrapped
Price Code "P"

38x46 Gallery
Wrapped
Price Code "DD"

20x24 Float Frame
Price Code "AI"

30x36 Float Frame
Price Code "AA"

38x46 Float Frame
Price Code "AW"

Three Framing Options



Champagne



Espresso



Black

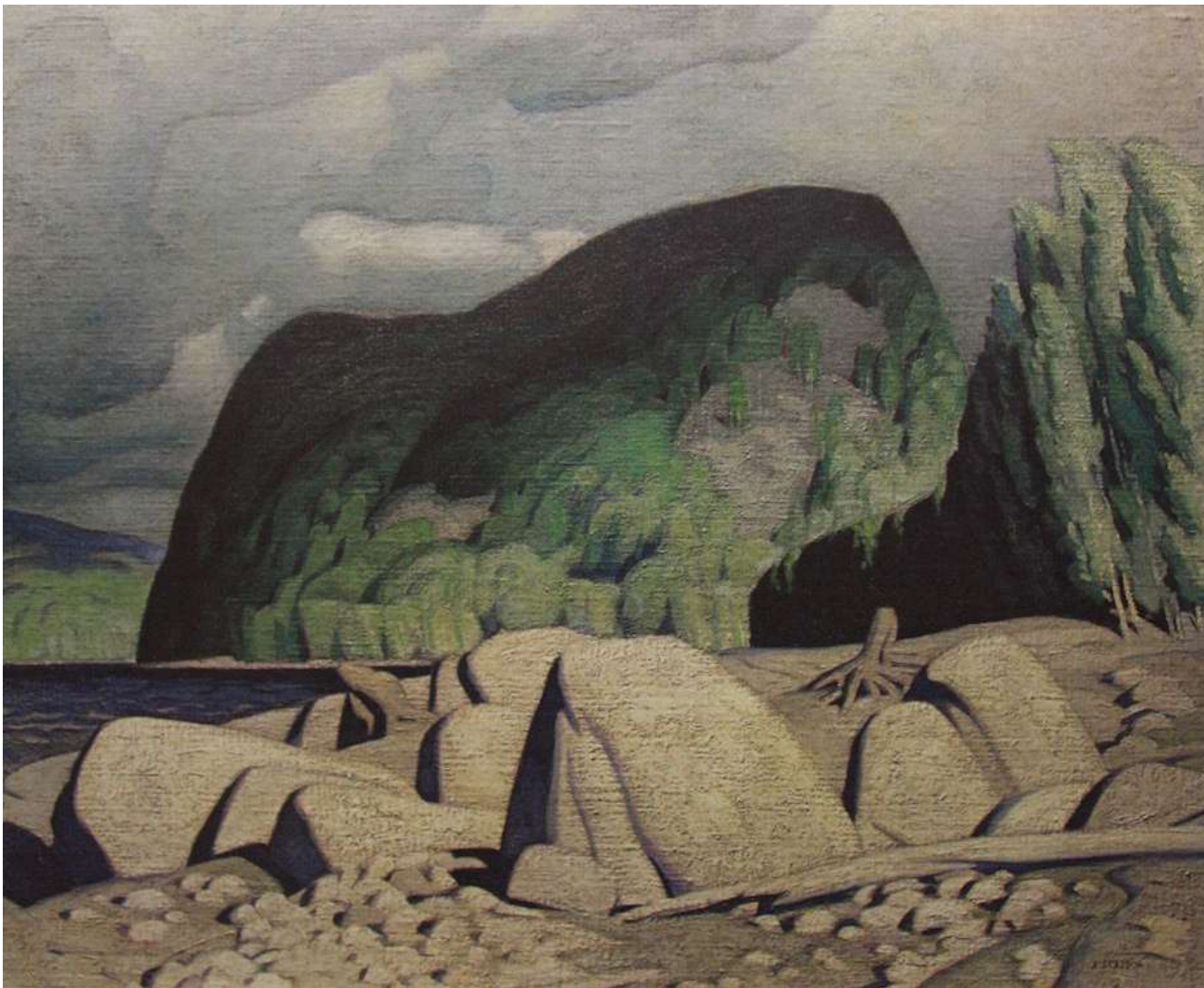
ALL IMAGES ARE AVAILABLE IN ALL FORMATS

images

by **FRAMEMAKERS**

A. J. Casson

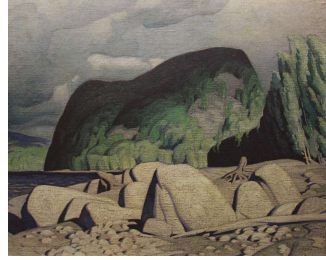
Collection



A. J. Casson Collection



A Little Bay in La Cloche
Channel, 1958
AJC-001



Aftermath
AJC-002



Algonquin Park, 1943
AJC-003



Algonquin Provincial
Park
AJC-004



Anglican Church at
Magnetawan
AJC-005



Approaching Storm, Lake
Superior
AJC-006



Approaching
Thunderstorm, 1935
AJC-007



August, Algonquin Park
AJC-008



Autumn Afternoon
AJC-009



Autumn Evening, 1935
AJC-010



Autumn, Georgian Bay
AJC-011



Autumn on the York
AJC-012



Back of House, 1924
AJC-013



Backwater, 1954
AJC-014



Baie Fine Entrance
AJC-015



Barn, Lake Baptiste, 1955
AJC-016

A. J. Casson Collection



Below High Falls, 1954
AJC-017



Below Ragged Falls
AJC-018



Blue Heron
AJC-019



Bobcaygeon, 1934
AJC-020



**Bon Echo, Lake Mazinaw,
1952**
AJC-021



Casson Lake
AJC-022



**Coldwell Bay, Lake
Superior, 1928**
AJC-023



Cool Weather
AJC-024



Country Crisis, 1940
AJC-025



Country Road
AJC-026



Country Store I
AJC-027



Country Store, 1930
AJC-028



Credit Forks, 1930
AJC-029



Crescendo
AJC-030



Dark Lake
AJC-031



Doc Snyder's House
AJC-032

A. J. Casson Collection



Early Snow
AJC-033



Early Summer Norval,
1928
AJC-034



Farmhouse
AJC-035



Farmhouse Near Bancroft, 1954
AJC-036



Farmhouse Near Wigle
AJC-037



First Snow, Grenadier Pond, 1921
AJC-038



Fisherman's Point, 1948
AJC-039



Fog Lifting
AJC-040



Fresh Snow
AJC-041



Frood Lake, 1948
AJC-042



Frood Lake, La Cloche,
1950
AJC-043



Green Hills
AJC-044



Grey March Day
AJC-045



Hamilton
AJC-046



Hazy October Morning
JC-047



Hills in Autumn
AJC-048

A. J. Casson Collection



Hillside Village, 1927
AJC-049



House at Parry Sound
AJC-050



House Tops in the Ward,
1924
AJC-051



Ice Hummocks
AJC-052



Kleinburg, 1929
AJC-053



Lake Kashagawigamos
AJC-054



Lake Kushog, 1925
AJC-055



Lake Mazinaw
AJC-056



Late Flurry
AJC-057



Little Island
AJC-058



March Morning
AJC-059



Markham, 1935
AJC-060



Mill at Elora, 1930
AJC-061



Mill at Washago, 1938
AJC-062



Mill Houses, 1928
AJC-063



Mill Lake
AJC-064

A. J. Casson Collection



Mist, Rain and Sun
AJC-065



Moose Lake
AJC-066



Morning Mist, Rouge
River
AJC-067



Morning on the Key
AJC-068



Near Nobel, 1933
AJC-069



North Channel
AJC-070



North Shore, Lake
Superior
AJC-071



North York Schoolhouse
AJC-072



Northern Church
AJC-073



Northern Farm
AJC-074



October, 1928
AJC-075



October Evening
AJC-076



October, Lake Superior
AJC-077



October, Lake Superior,
1928
AJC-078



October Morning, 1980
AJC-079



October Storm Clouds
AJC-080

A. J. Casson Collection



Old Farm House
AJC-081



Old House, Parry Sound
AJC-082



Old Lime Kilns
AJC-083



Old Store at Salem, 1931
AJC-084



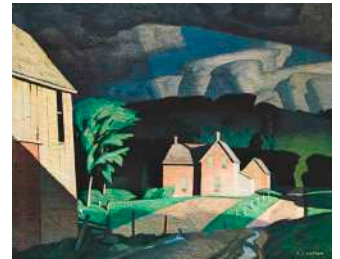
On the Don, 1924
AJC-085



Oxtongue River
AJC-086



Parry Sound
AJC-087



Passing Storm
AJC-088



Picnic Island
AJC-089



Pike Lake, 1929
AJC-090



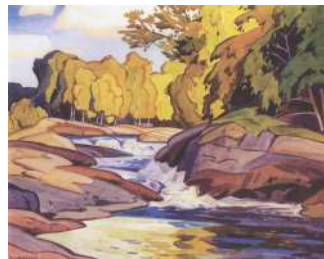
Pink Farmhouse
AJC-091



Prelude
AJC-092



Ragged Sky, Moose Lake
AJC-093



Rapids on the Magnetawan
AJC-094



Ringwood, 1947
AJC-095



River's Edge, 1957
AJC-096

A. J. Casson Collection



Rock Cluster
AJC-097



Rock Pool, Cloche Hills
AJC-098



**Saturday Afternoon,
1927**
AJC-099



Shore Pattern
AJC-100



Silver Morning
AJC-101



Smoke Lake
AJC-102



Snow-Covered Spruce
AJC-103



Snowflurries
AJC-104



Spring Flood, 1947
AJC-105



Spring Lasky, 1932
AJC-106



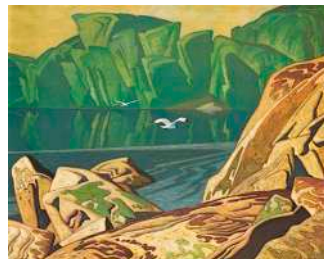
Stillness After Rain
AJC-107



Street in Glen Williams
AJC-108



Summer Hillside
AJC-109



Summer Morning
AJC-110



Summer Sky
AJC-111



Summer Storm
AJC-112

A. J. Casson Collection



Summer Sun
AJC-113



Sun After Thunder
AJC-114



Sunlit Isle
AJC-115



Sunshine After Rain
AJC-116



Sunshine Alley, 1947
AJC-117



**Tea Lake, Algonquin
Park**
AJC-118



The Archway
AJC-119



The White Village
AJC-120



Thunderheads
AJC-121



Thunderstorm, 1933
AJC-122



Unionville
AJC-123



Valley Farm
AJC-124



Village House, Summer
AJC-125



Village House, Winter
AJC-126



Village Mill
AJC-127



**Village of Mt. Albert,
1938**
AJC-128

A. J. Casson Collection



West Guilford, 1930
AJC-129



White Forest, 1937
AJC-130



White Pine, 1948
AJC-131



White Pine, 1957
AJC-132



Winter House, 1942
AJC-133



Winter in the Village,
1938
AJC-134



Winter on the Don, 1926
AJC-135



Winter Sun I
AJC-136



Winter Sun II
AJC-137

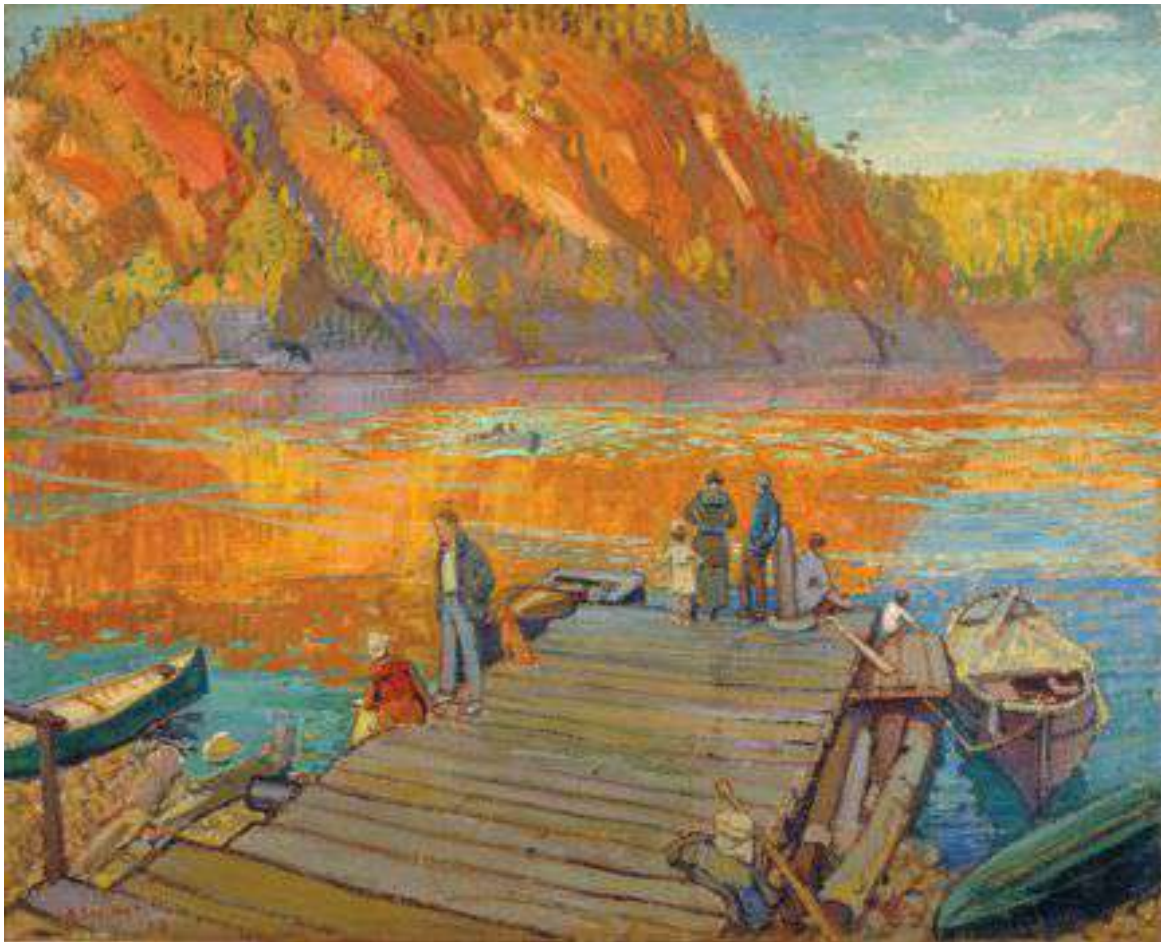


York Mills, 1947
AJC-138

images

by **FRAMEMAKERS**

Arthur Lismer Collection



Arthur Lismer *Collection*



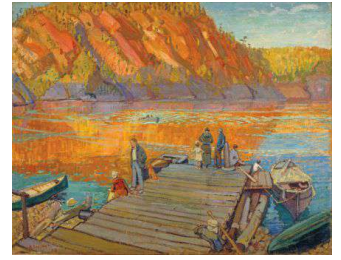
A September Gale
AL-001



A Westerly Gale, Georgian
Bay, 1916
AL-002



Autumn in Algonquin,
October, 1914
AL-003



Autumn, Bon Echo, 1923
AL-004



Baie Saint Paul, 1931
AL-005



Bright Land, 1938
AL-006



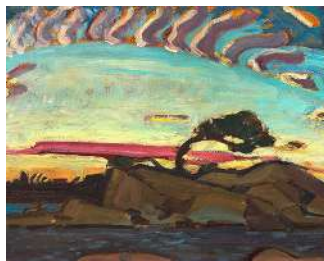
Cape Breton Island
Beach, 1924
AL-007



Convoy at Sea, 1920
AL-008



Evening Glow, McGregor
Bay, 1923
AL-009



Evening Silhouette, 1928
AL-010



Fishing Village, New
Brunswick, 1929
AL-011



Georgian Bay, Spring
1917
AL-012



Halifax Harbour, Time of
War, 1918
AL-013



Island with Pine, 1914
AL-014



Isles of Spruce
AL-015



Lilies and Apples
AL-016

Arthur Lismer Collection



Little Lake, Bay Finn,
1932
AL-017



McGregor Bay, 1923
AL-018



Mine Sweepers at Sea,
1917
AL-019



My Wife, Sackville River,
Nova Scotia, 1918
AL-020



October on the North
Shore, Lake Superior, 1927
AL-021



Old Pine, McGregor Bay
AL-022



Pic Island, 1927
AL-023



Poppies, Bedford Park
Avenue, 1924
AL-024



Quebec Village, 1926
AL-025



Ragged Lake, Algonquin
Park, 1914
AL-026



Sackville River, 1917
AL-027



Seal Cove, Grand Manan,
1931
AL-028



September Sunlight,
Georgian Bay, 1933
AL-029



Severn River, 1925
AL-030



Somber Hill, Algoma,
1922
AL-031



Somber Island of Pic, Lake
Superior, 1927
AL-032

Arthur Lismer *Collection*



Springtime on the Farm,
1917
AL-033



Sumach and Maple, 1915
AL-034



Sunglow, 1915
AL-035



The Big Rock, Bon Echo,
1922
AL-036



The Guide's Home,
Algonquin, 1914
AL-037



The Happy Isles, 1924
AL-038



The Sheep's Nose, Bon
Echo, 1922
AL-039

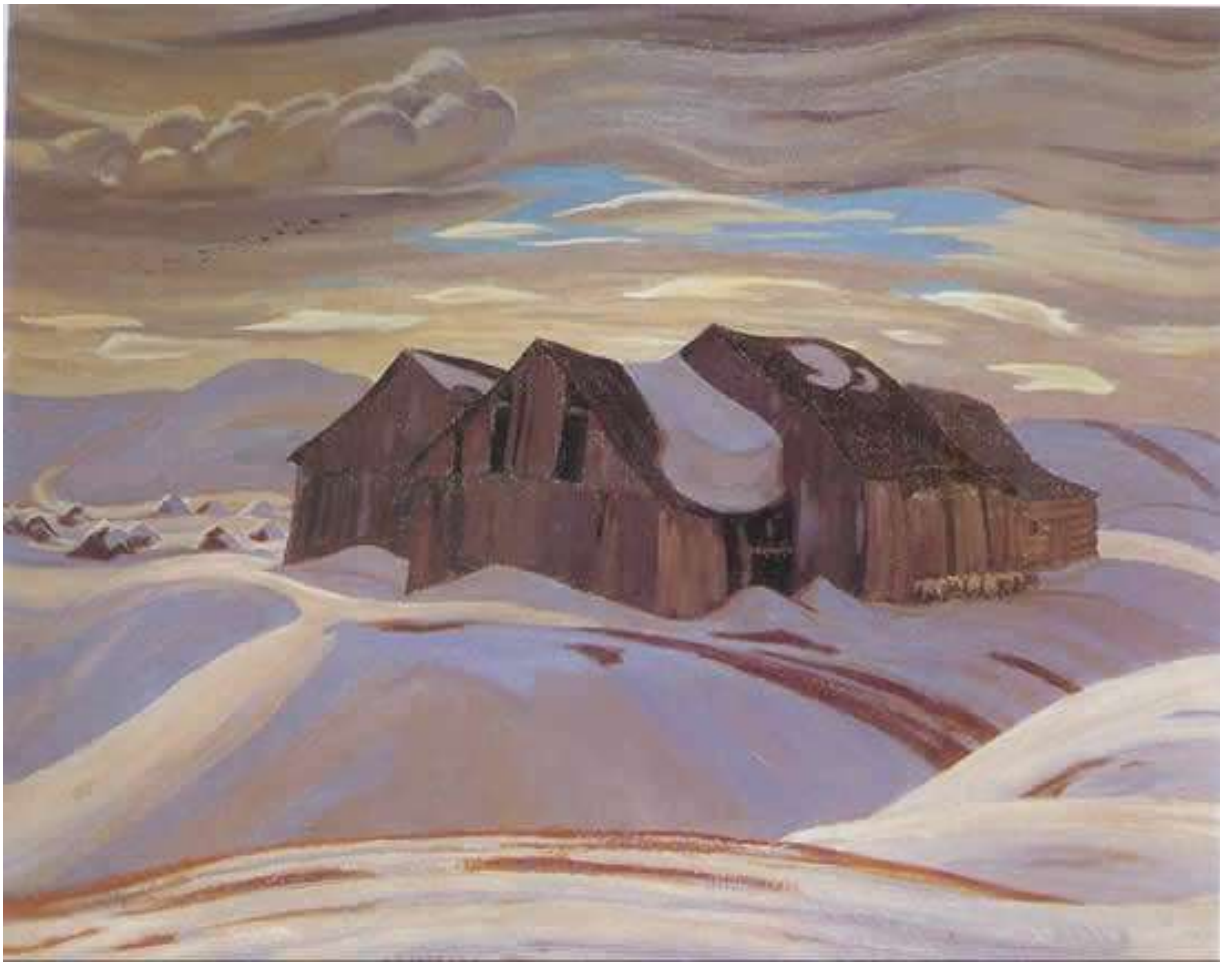


Winter Camouflage, 1918
AL-040

images

by **FRAMEMAKERS**

A. Y. Jackson Collection



A. Y. Jackson Collection



A Copse, Evening, 1918
AYJ-001



A Lake in Labrador, 1930
AYJ-002



A Quebec Farm, 1930
AYJ-003



A Quebec Village, 1921
AYJ-004



A Street in Murray Bay,
1926
AYJ-005



Afternoon, St. Hilarion
AYJ-006



Algoma, November, 1934
AYJ-007



Algoma Rocks, Autumn,
1923
AYJ-008



Barns, 1926
AYJ-009



Bent Pine, 1948
AYJ-010



Blue Gentians, 1913
AYJ-011



Bon Echo, Ontario, 1924
AYJ-012



Camouflaged Huts, Villers-
au-Bois, 1917
AYJ-013



Coniston, 1957
AYJ-014



Cypress Trees, Assisi,
1912
AYJ-015



Early Spring, Georgian
Bay, 1920
AYJ-016

A. Y. Jackson Collection



Early Spring, Quebec,
1927
AYJ-017



First Snow, Algoma, 1920
AYJ-018



First Snow, Georgian
Bay, 1920
AYJ-019



Freddy Channel, 1930
AYJ-020



Frozen Lake, Early Spring,
Algonquin Park, 1914
AYJ-021



Gaspé Landscape, 1938
AYJ-022



Georgian Bay, November
AYJ-023



Grace Lake, Algoma, 1939
AYJ-024



Grand Canal, Venice, 1912
AYJ-025



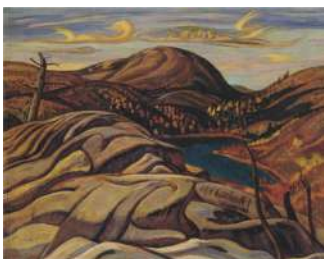
Grey Day, Laurentians
AYJ-026



Grey Day, October, 1933
AYJ-027



Herring Cove, Nova
Scotia, 1919
AYJ-028



Hills, Killarney, 1933
AYJ-029



Hillside, St. Tites-des-Caps,
1937
AYJ-030



House at Ypres, 1917
AYJ-031



Ile aux Coudres, 1926
AYJ-032

A. Y. Jackson Collection



Indian Home, 1927
AYJ-033



Labrador Coast, 1931
AYJ-034



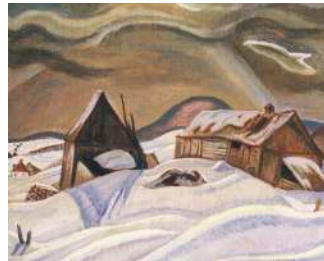
Lake Cognashene, 1920
AYJ-035



Les Eboulements, 1933
AYJ-036



Maple Woods, Algoma,
1920
AYJ-037



March Day, Laurentians,
1933
AYJ-038



March Storm, Georgian
Bay, 1920
AYJ-039



Montreal, Algoma River
AYJ-040



Morning After Sleet, 1919
AYJ-041



Morning, Agawa River,
1920
AYJ-042



Mountains on the West Side
of Haines Road
AYJ-043



Night, Pine Island, 1924
AYJ-044



North Shore, Lake Superior,
1926
AYJ-045



Northern Landscape
AYJ-046



November, 1922
AYJ-047



Oak and Birch, March, 1920
AYJ-048

A. Y. Jackson Collection



October Morning, Algoma,
1920
AYJ-049



Porcupine Hills, Alberta,
1937
AYJ-050



Red Barn, Petite-Riviere,
1930
AYJ-051



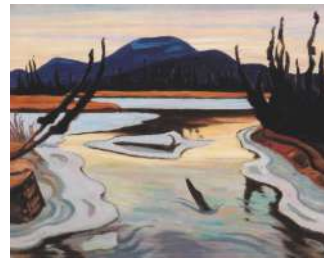
Saint Hilarion
AYJ-052



Saint Tite-des-Caps
AYJ-053



Shoreline, Wawa, Lake
Superior, 1955
AYJ-054



Smart River, Alaska
Highway, 1944
AYJ-055



Smoke Fantasy, 1932
AYJ-056



Spring, Lower Canada, 1915
AYJ-057



Springtime in Picardy,
1919
AYJ-058



St. John's Harbour,
Newfoundland, 1951
AYJ-059



Tadenac, November,
1924
AYJ-060



Terre Sauvage, 1913
AYJ-061



The Beothic at Bache Post,
Ellesmere Island, 1929
AYJ-062



The Convoy, 1919
AYJ-063



The Edge of the Maple
Wood, 1910
AYJ-064

A. Y. Jackson Collection



The Entrance to Halifax
Harbour, 1920
AYJ-066



The Freddy Channel,
Georgian Bay, 1920
AYJ-067



The Highway Near Kluane
Lake, 1943
AYJ-068



The Old Gun, Halifax, 1919
AYJ-069



The Red Maple, 1914
AYJ-070



The Road to St. Fidele, 1929
AYJ-071



The Sleigh Ride
AYJ-072



The St. Lawrence at St.
Fidele, 1930
AYJ-073



The St. Lawrence in Winter
AYJ-074



The Winter Road, 1921
AYJ-075



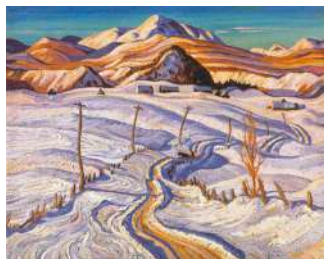
Totem Poles, Kitawanga,
1926
AYJ-076



Wartz Lake, Algoma,
1919 AYJ-077



Winter Night
AYJ-078



Winter, Charlevoix County,
1914
AYJ-079



Winter, Georgian Bay, 1914
AYJ-080



Winter: L'Islet, Quebec,
1940
AYJ-081

images

by **FRAMEMAKERS**

Clarence Gagnon Collection



Clarence Gagnon *Collection*



A Lonely House, 1928
CG-001



A Sainte Petronille, Ile d'Orleans, 1908
CG-002



After a Snow Fall
CG-003



Autumn Scene, Baie St. Paul, 1909
CG-004



Autumn, Baie St. Paul, 1938
CG-005



Autumn, Pont de l'Arche, 1905
CG-006



Burning Stumps, 1928
CG-007



Canal du Long, 1908
CG-008



Children at Play
CG-009



Clearing, Charlevoix, 1915
CG-010



Clearing in the Woods
CG-011



Evening on the North Shore, 1924
CG-012



Evening, Sienna, 1911
CG-013



Farm on a Hill, 1928
CG-014



Harvesting, 1928
CG-015



Horse Racing in Winter, Quebec, 1925
CG-016

Clarence Gagnon *Collection*



Ice Harvest, Quebec, 1925
CG-017



Jour de Boucherie, 1913
CG-018



L'Hiver dans les
Laurentides, 1911
CG-019



Laurentian Homestead
CG-020



Laurentian Village, 1921
CG-021



March in the Birchwoods,
1920
CG-022



Midnight Mass
CG-023



Mountain Stream, Dalen-
Kelemark, Norway, 1935
CG-024



Near Baie St. Paul, 1912
CG-025



Old Houses, Baie St. Paul,
1912
CG-026



Overlooking the Vallee du
Gouffre, Charlevoix, 1915
CG-027



Oxen Ploughing, Beaufre,
1903
CG-028



Quebec Village Street
CG-029



Red Sleigh
CG-030



Spring Thaw, Quebec
Village, 1934
CG-031



Street Scene, Quebec at
Night, 1917
CG-032

Clarence Gagnon *Collection*



Summer Breeze at Dinard,
1907
CG-033



Sunset, Normandy, 1913
CG-034



The Beach at Dinard, 1909
CG-035



The Ice Bridge, Quebec,
1919
CG-036



The Red Door, Charlevoix
CG-037



The Train, 1912
CG-038



The Train, Winter, 1913
CG-039



The Trapper's Return
CG-040



The Two Beaches
CG-041



The Wayside Cross,
Autumn, 1916
CG-042



The Wayside Cross, Winter,
1916
CG-043



The Yellow House
CG-044



Village in the Laurentian
Mountains, 1925
CG-045



Winter Morning in Baie
St. Paul
CG-046



Winter, Village of Baie
St. Paul
CG-047

images

by **FRAMEMAKERS**

Edwin Holgate Collection



Edwin Holgate *Collection*



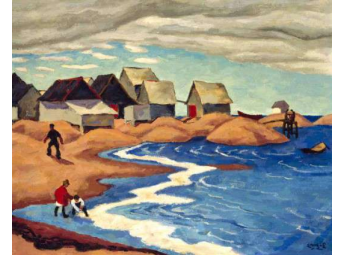
Autumn Tangle, 1940
EH-001



Baie St. Paul, 1924
EH-002



**Fete des Filets Bleus,
Concarneau, 1921**
EH-003



Fishermen's Houses, 1933
EH-004



Francis' Tree, 1950
CG-005



**Haeguilgaet, Skeena River,
1926**
EH-006



Laurentian Cemetery, 1948
EH-007



Laurentian Lake, 1935
EH-008



Ski Tracks, 1935
EH-009



**Totem Poles, Gitsegiuklas,
1927**
EH-010



Tree Stump by the Lake
EH-011

images

by **FRAMEMAKERS**

Emily Carr Collection



Emily Carr Collection



Abstract Tree Forms, 1931
EC-001



Autumn in France, 1911
EC-002



Autumn Woods
EC-003



Beacon Hill Park, 1909
EC-004



Big Raven, 1931
EC-005



Broom, Beacon Hill, 1937
EC-006



Cleared Land
EC-007



Clear Sky
EC-008



Clover Point, Victoria, 1936
EC-009



Cordova Bay
EC-010



Cumshewa, 1912 I
EC-011



Cumshewa, 1912 II
EC-012



Forest Clearing
EC-013



Forest, British Columbia,
1940
EC-014



Gitwangak, 1912
EC-015



Heina, Maude Island, Queen
Charlotte Islands, 1912
EC-016

Emily Carr Collection



House Posts,
Tsatsinuchomi, B.C., 1912
EC-017



In the Woods of British
Columbia, 1942
EC-018



Indian Canoes in Harbour,
1895 I
EC-019



Indian Canoes in Harbour,
1895 II
EC-020



Indian Village, Cumshewa,
1910
EC-021



Indian War Canoe, 1912
EC-022



Kispiax Village, 1929
EC-023



Kwakiutl, 1912
EC-024



Landscape, 1935
EC-025



Logging Camp, 1920
EC-026



Metchosin
EC-027



Mrs. Jones' Farm, 1938
EC-028



Odds and Ends
EC-029



Overhead, 1935
EC-030



Pine Trees and Blue Sky
EC-031



Sea & Sky, 1936
EC-032

Emily Carr Collection



Seascape, 1935
EC-033



Skedans Poles, 1912
EC-034



Skedans I, 1912
EC-035



Skedans II, 1912
EC-036



Sky, 1935
EC-037



Spring, 1936
EC-038



Strait of Juan de Fuca, 1936
EC-039



Stumps and Sky, 1934
EC-040



Tanoo, Q.C.I., 1913
EC-041



The Shoreline
EC-042



Tribe Klawatsis,
Karlukwees Village, 1912
EC-043



Tsatsisnukomi, B.C.,
1912
EC-044



Tsatsisnukomi, Tribe
Klawatsis, 1912
EC-045



Village Totem
EC-046



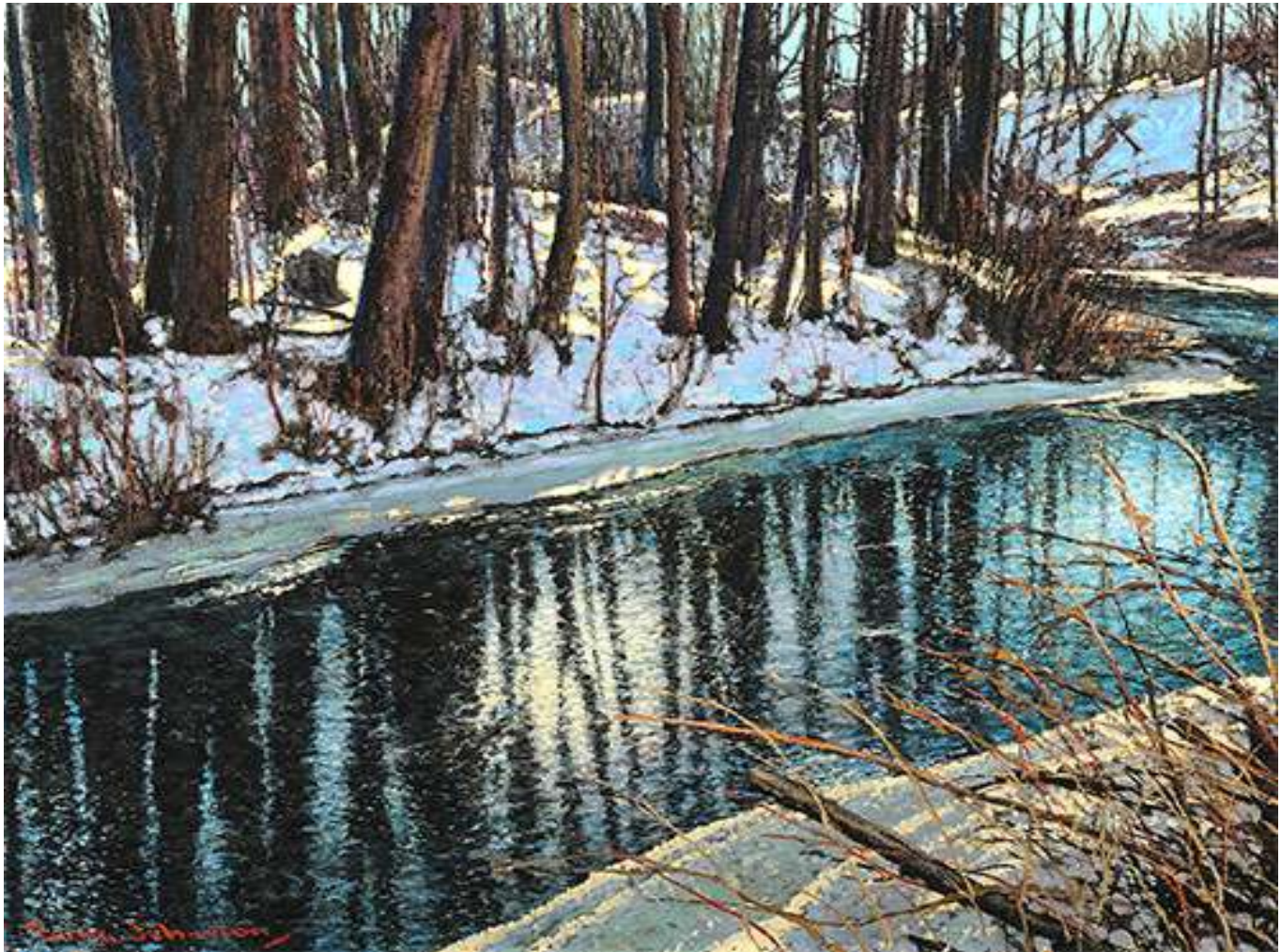
Yan, Q.C.I., 1912
EC-047

images

by **FRAMEMAKERS**



Frank Johnston Collection



Frank Johnston *Collection*



A Bend in the River
FJ-001



A Northern Night, 1917
FJ-002



Approaching Storm,
Algoma, 1919
FJ-003



Beamsville
FJ-004



Blue and Gold, Algoma
FJ-005



Early Evening, Winter, 1928
FJ-006



Fire-Swept, Algoma, 1920
FJ-007



Landscape, 1922
FJ-008



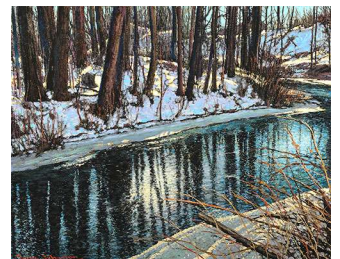
Looking into the Blue, 1919
FJ-009



Nature's Rug, Lake of the
Woods, 1922
FJ-010



Near the Berry Patch, 1920
FJ-011



Reflections, Algoma, 1918
FJ-012



Serenity, Lake of the
Woods, 1922
FJ-013



Shadowed Valley
FJ-014



Sunset in the Bush
FJ-015



The Dark Woods, Interior,
1921
FJ-016

Frank Johnston *Collection*



The Fire Ranger, 1921
FJ-017



Where the Eagles Soar
FJ-018



Woodland Tapestry, 1919
FJ-019

images

by **FRAMEMAKERS**



Franklin Carmichael Collection



Franklin Carmichael Collection



A Northern Silver Mine, 1930
FC-001



Autumn Hillside, 1920
FC-002



Autumn in the Northland
FC-003



Autumn Splendor, 1921
FC-004



Autumn Tapestry
FC-005



Autumn, Orillia, 1924
FC-006



Bay of Islands
FC-007



Bay of Islands, 1930
FC-008



Bon Echo, 1928
FC-009



Clouds, Georgian Bay, 1919
FC-010



Cranberry Lake
FC-011



Evening, North Shore
FC-012



Falling Leaves, Autumn
FC-013



Fanciful Autumn, 1922
FC-014



Frood Lake
FC-015



Grace Lake, 1931
FC-016

Franklin Carmichael Collection



Grace Lake, 1933
FC-017



Grace Lake, 1934
FC-018



Grey Day, 1916
FC-019



Industrial Building
FC-020



Island, Georgian Bay
FC-021



Jackfish Village, 1926
FC-022



La Cloche Hills, Rocks and
Streams, 1932
FC-023



La Cloche Landscape
FC-024



La Cloche Landscape and
Trees, 1930
FC-025



La Cloche Mountains
FC-026



La Cloche, 1934
FC-027



Lake Superior, 1929
FC-028



Light & Shadow, 1937
FC-029



Looking Down onto Grace
Lake, 1933
FC-030



Mirror Lake, 1929
FC-031



North Shore, Lake Superior,
1927
FC-032

Franklin Carmichael Collection



North Town, 1927
FC-033



October Gold, 1922
FC-034



Red Maples, 1922
FC-035



Scrub Oaks and Maples
FC-036



Silvery Tangle, 1921
FC-037



Snow Clouds, 1926
FC-038



Sumachs
FC-039



The Glade, 1922
FC-040



The Hilltop, 1921
FC-041



The Nickel Belt, 1928
FC-042



The Upper Ottawa, Near
Mattawa, 1924
FC-043



Twisted Pine, 1939
FC-044



Wabajisk: Drowned Land,
1929
FC-045



Waterfalls on the Way to
Nellie Lake, 1939
FC-046



Wild Cherry Blossoms,
1932
FC-047



Winter Trees, 1916
FC-048

Franklin Carmichael *Collection*



Winter, 1916
FC-049

images

by **FRAMEMAKERS**



Frederick Varley Collection



Frederick Varley Collection



Burnt-Out Tank, 1918
FV-001



Cheakamus Canyon, 1929
FV-002



Dawn, 1929
FV-003



Evening, Georgian Bay, 1920
FV-004



Fire Ranger's Look-Out, 1932
FV-005



For What?, 1918
FV-006



Gas Chamber at Seaford, 1918
FV-007



German Prisoners, 1918
FV-008



Lynn Valley, 1932
FV-009



Mount Garibaldi, 1927
FV-010



Mountain Lake, 1930
FV-011



Mountain Vista, B.C., 1929
FV-012



Night Ferry, Vancouver 1913
FV-013



Open Window, 1933
FV-014



Quebec Village, 1926
FV-015



Snow in the Mountains, Garibaldi Park, 1927
FV-016

Frederick Varley Collection



Sphinx Glacier, Mt.
Garibaldi, 1927
FV-017



Springtime in Picardy, 1919
FV-018



Stormy Weather, Georgian
Bay, 1921
FV-018



Sun and Wind, Georgian
Bay, 1916
FV-019



The Cloud, Red Mountain,
1928
FV-020



The Sunken Road, 1919
FV-021



The Wonder Tree, 1924
FV-022



View from the Artist's
Bedroom Window, Jericho
Beach, 1929
FV-023

images

by **FRAMEMAKERS**



J. E. H. MacDonald Collection



J. E. H. MacDonald *Collection*



A Northern Home, 1915
JEHM-001



A Rapid in the North, 1913
JEHM-002



Algoma
JEHM-003



Algoma Waterfall
JEHM-004



Asters and Apples, 1917
JEHM-005



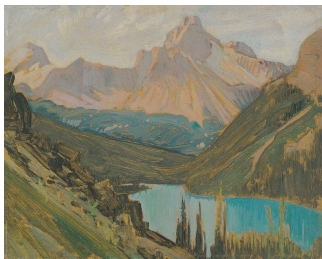
Autumn Leaves,
Batchewana
JEHM-006



Batchewana Falls, Algoma
JEHM-007



Bridge at Petite Riviere,
Nova Scotia, 1922
JEHM-008



Cathedral Peak, Lake
O'Hara, 1927
JEHM-009



Cattle by the Creek, 1918
JEHM-010



Cedar, Little Turtle Lake,
1919
JEHM-011



Falls, Montreal River,
1920
JEHM-012



Fine Weather, Georgian
Bay
JEHM-013



Flower Border, Usher's
Farm, York Mills, 1918
JEHM-014



Georgian Bay, 1931
JEHM-015



Gleams on the Hills
JEHM-016

J. E. H. MacDonald *Collection*



Goat Range, Rocky
Mountains
JEHM-017



Hazy Sunshine, Near Split
Rock, 1912
JEHM-018



Lake O'Hara, Rocky
Mountains
JEHM-019



Lake O'Hara, 1928
JEHM-020



Lake Simcoe, 1919
JEHM-021



Larch Trees
JEHM-022



Laurentian Hillside,
October 1913
JEHM-023



Laurentian Hillside,
October 1914
JEHM-024



Laurentian Village, October
1916
JEHM-025



Leaves in the Brook
JEHM-026



Logs Coming Down the
Narrows, Turtle Lake
JEHM-027



Logs on the Gatineau, 1915
JEHM-028



Mist Fantasy, Northland,
1922
JEHM-029



Mist Fantasy, Sand River,
Algoma, 1920
JEHM-030



Misty Morning, Algoma,
1921
JEHM-031



Mountain Snowfall, Lake
Oesa, 1932
JEHM-032

J. E. H. MacDonald *Collection*



Northland Hilltop, 1931
JEHM-033



Nova Scotia Barn, 1922
JEHM-034



Nova Scotia Cove, 1922
JEHM-035



Nova Scotia Fishing Village,
1930
JEHM-036



October Shower Gleam
JEHM-037



Old Dock, Petite Riviere,
Nova Scotia 1922
JEHM-038



On Montreal Lake, Algoma,
1919
JEHM-039



Pump and Pumpkins,
1916
JEHM-040



Rain, Lake O'Hara Camp
JEHM-041



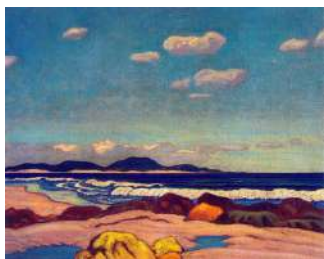
Rain, Laurentians, 1913
JEHM-042



Red Maple and Flowers
JEHM-043



Rowanberries, Algoma
JEHM-044



Seashore, Nova Scotia, 1923
JEHM-045



September Snow on Mount
Schaffer
JEHM-046



Snowbound, 1915
JEHM-047



Spring Rapids, 1912
JEHM-048

J. E. H. MacDonald *Collection*



Stream in Algoma
JEHM-049



Sunflowers, Thornhill
JEHM-050



Tamarack and Mountain
Stream
JEHM-051



The Beaver Dam, 1919
JEHM-052



The Church by the Sea,
1924
JEHM-053



The Elements
JEHM-54



The Little Falls, 1918
JEHM-055



The Sleighing Party,
Winter Moonlight
JEHM-056



The Solemn Land,
1921 JEHM-057



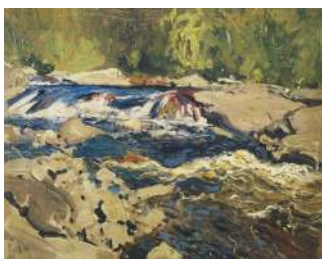
The Supply Boat, 1916
JEHM-058



The Tangled Garden, 1916
JEHM-059



The Wild River, 1919
JEHM-060



Thomson's Rapids,
Magnetawan River, 1910
JEHM-061



Tracks and Traffic, 1912
JEHM-062



Valley from McArthur
Lake, Rocky Mountains,
1925
JEHM-063

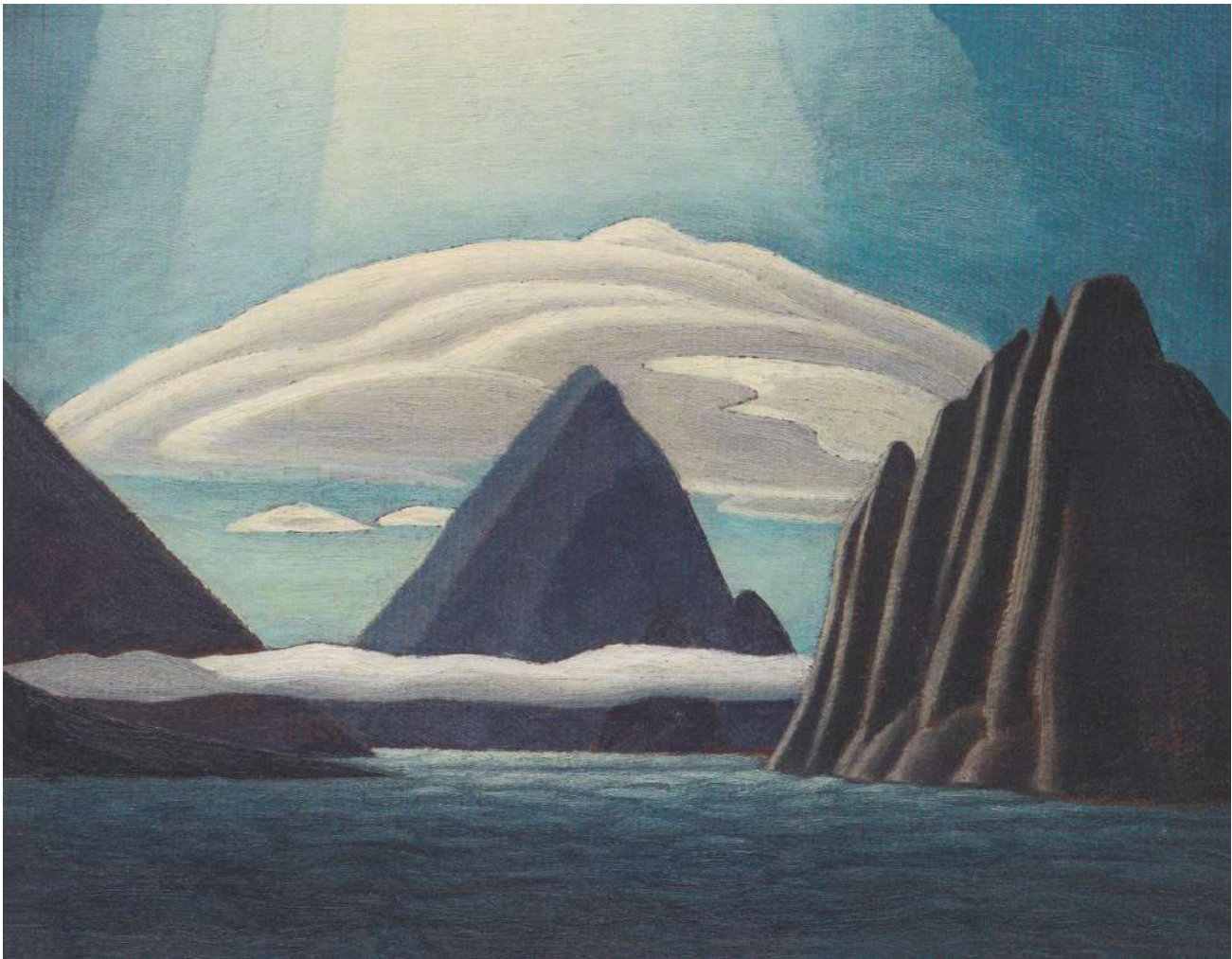
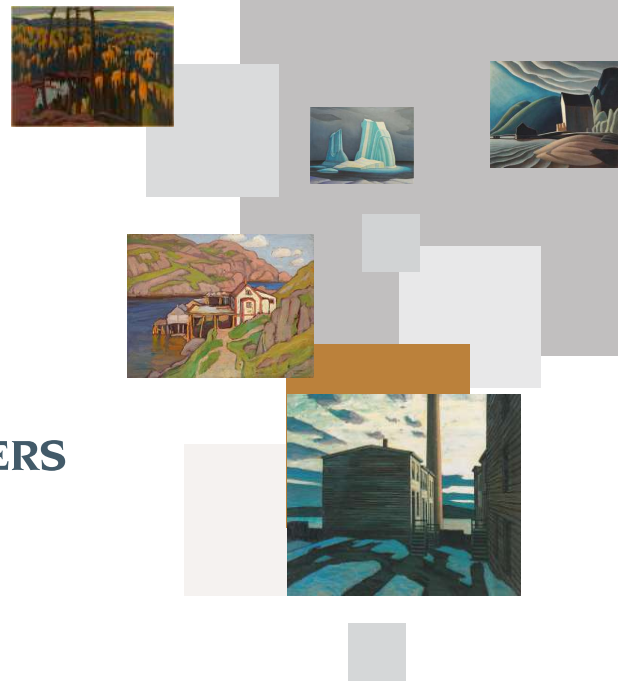


Young Canada
JEHM-064

images

by **FRAMEMAKERS**

Lawren Harris Collection



Lawren Harris *Collection*



A Load of Fence Posts, 1911
LH-001



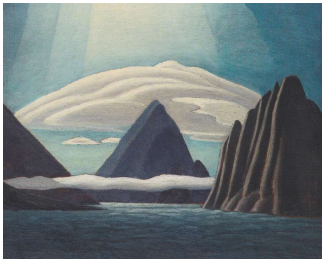
A Side Street, 1919
LH-002



Above Lake Superior, 1922
LH-003



Afternoon, Lake Superior
LH-004



Albert Harbour, North
Baffin Island, 1930
LH-005



Algoma Country
LH-006



Algoma Hill, 1920
LH-007



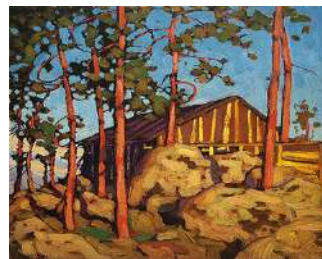
Algoma Sketch
LH-008



Algoma Sketch II
LH-009



Algoma Waterfall
LH-010



Algonquin Park, 1917
LH-011



Autumn, Algoma
LH-012



Autumn, Algoma, 1920
LH-013



Autumn, Batchewana, 1918
LH-014



Autumn, Kempenfelt Bay,
Lake Simcoe, 1916
LH-015



Barren Lake Superior, 1926
LH-016

Lawren Harris *Collection*



Beaver Swamp, Algoma,
1920
LH-017



Billboard Jazz, 1920
LH-018



Black Court, Halifax, 1921
LH-019



Building the Ice House,
Hamilton, 1912
LH-020



Chestnut Tree, House,
Barrie
LH-021



Clouds, Lake Superior, 1923
LH-022



Coldwell Bay
LH-023



Early Houses
LH-024



Early Light
LH-025



Elevator Court, Halifax,
1921
LH-026



Ellesmere Island, 1930
LH-027



Eskimo Tent, Pangnirtung,
Baffin Island, 1930
LH-028



First Snow, North Shore of
Lake Superior, 1923
LH-029



Fish Stage, Quidi Vidi,
Newfoundland, 1921
LH-030



From the North Shore, Lake
Superior, 1923
LH-031



Glaciers, Rocky Mountains
LH-032

Lawren Harris *Collection*



Golden October
LH-033



Greenland Mountains, 1930
LH-034



Grey Day in Town
LH-035



High Country, Lake Superior, 1925
LH-036



House in Autumn
LH-037



House in the Ward
LH-038



Houses, Chestnut Street, 1919
LH-039



Houses in Winter I
LH-040



Houses in Winter II
LH-041



Houses on Wellington Street, 1910
LH-042



Houses, Richmond Street
LH-043



Hurdy Gurdy, 1913
LH-044



Ice House, Coldwell, Lake Superior, 1923
LH-045



Icebergs, Davis Strait, 1930
LH-046



In Buchanan Bay, Ellesmere Island, 1930
LH-047



Island in the Lake, Algonquin Park, 1916
LH-048

Lawren Harris *Collection*



Island, MacCallum Lake,
1921
LH-049



Isolation Peak, 1930
LH-050



Joe Lake, Algonquin Park,
1914
LH-051



Lake and Mountains
LH-052



Lake Harbour, South Shore,
Baffin Island, Morning, 1930
LH-053



Lake in Algoma
LH-054



Lake McArthur, 1920
LH-055



Lake Simcoe, Summer, 1918
LH-056



Lake Superior Hill, 1925
LH-057



Lake Superior, 1923
LH-058



Lake Superior, 1924
LH-059



Lake Superior, 1928
LH-060



Lake Superior, 1928 II
LH-061



Laurentian Landscape, 1913
LH-062



Lighthouse, Father Point,
1930
LH-063



Maligne Lake, Jasper Park,
1924
LH-64

Lawren Harris *Collection*



Miners' Houses, Glace Bay,
1925
LH-065



Moonlight, Corner Store,
Toronto, 1911
LH-066



Morning, 1921
LH-067



Morning Light, Lake
Superior
LH-068



Morning, Lake Superior
LH-069



Mount Lefroy
LH-070



Mount Robson, 1929
LH-071



Mount Thule, Bylot Island,
1930
LH-072



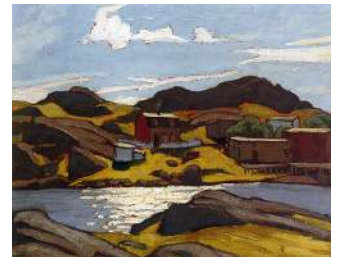
Mountain Forms, 1926
LH-073



Mountains and Lake
LH-074



Mountains Near Jasper
LH-075



Newfoundland Sketch, 1921
LH-076



North Shore, Lake Superior,
1922
LH-077



North Shore, Lake Superior,
1926
LH-078



North Shore, Lake
Superior, Pic Island II, 1922
LH-079



Northern Autumn
LH-080

Lawren Harris *Collection*



Northern Lake, 1923
LH-081



Northern Lake, 1926
LH-082



Northern Painting, 1924
LH-083



Old House, Toronto,
Winter, 1919
LH-084



Pic Island
LH-085



Pic Island, Lake Superior,
1923
LH-086



Pic Island, Lake Superior,
1924
LH-087



Pine Tree and Red House,
1920
LH-088



Pine Tree and Rocks, 1921
LH-089



Pines, Kempenfelt Bay
LH-090



Quiet Lake, 1923
LH-091



Red House and Yellow
Sleigh, 1920
LH-092



Red House, Winter, 1925
LH-093



Red Sleigh, House, Winter,
1919
LH-094



Return from Church, 1919
LH-095



Shacks
LH-096

Lawren Harris Collection



Shimmering Water,
Algonquin Park, 1922
LH-097



Snow II, 1915
LH-098



Snow, 1917
LH-099



Snowfall
LH-100



Spruce and Snow, Northern
Ontario
LH-101



Spring on the Oxtongue
River, 1924
LH-102



Summer, Algoma
LH-103



Summer Houses, Grimsby
LH-104



Sunset, Kempenfelt Bay
LH-105



Tamarack Swamp
LH-106



The Corner Store, 1912
LH-107



The Drive
LH-108



The Eaton Manufacturing
Building, 1911
LH-109



The Gas Works
LH-110



The Pines
LH-111



Toronto Houses, Autumn
LH-112

Lawren Harris *Collection*



Toronto Street, Winter
Morning
LH-113



Toronto, Old Houses, 1911
LH-114



Trees in the North
LH-115



Winter Afternoon, City
Street, Toronto, 1918
LH-116



Winter Landscape, 1916
LH-117



Winter Landscape with
Pink House, 1918
LH-118



Winter Sunrise, 1918
LH-119



Winter Woods, 1915
LH-120



Wood Interior, Algoma
LH-121



Yellow Sky, Blue Spruce
LH-122

images

by **FRAME**MAKERS



Lemoine Fitzgerald Collection



Lemoine Fitzgerald Collection



At Silver Heights, 1931
LF-001



Doc Snyder's House, 1931
LF-002



Farmyard, 1931
LF-003



Fort Garry Store, 1929
LF-004



From an Upstairs Window,
Winter
LH-005



Interior, 1948
LH-006



Pembina Valley, 1923
LF-007



Poplar Woods: Poplars,
1929
LF-007



Pritchard's Fence, 1928
LF-008



The Little Plant, 1947
LF-009



The Pool, 1934
LF-010



Tree Study, 1949
LF-011

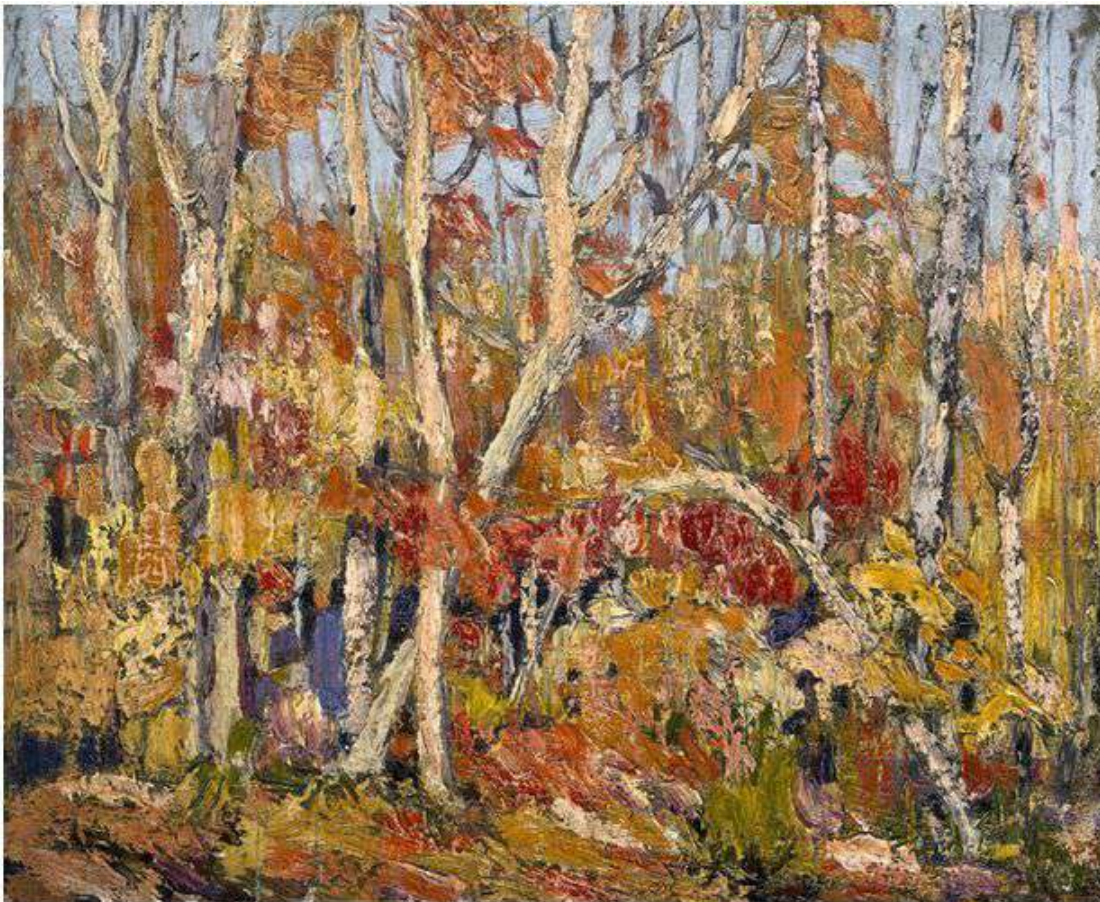


William's Garage, 1927
LF-012

images

by **FRAMEMAKERS**

Tom Thomson Collection



Tom Thomson Collection



A Rapid, 1915
TT-001



Afternoon, Algonquin Park
TT-002



Algonquin, October
TT-003



Algonquin Park, 1916
TT-004



Algonquin Woods, Sunset
TT-005



Algonquin, Autumn, 1916
TT-006



Alligator
TT-007



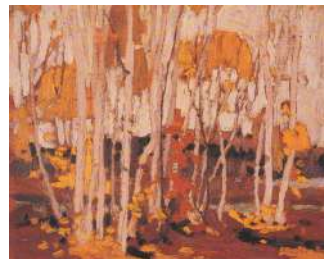
An Ice Covered Lake, 1917
TT-008



Approaching Snowstorm,
1915
TT-009



Artist's Camp
TT-010



Autumn Birches, 1915
TT-011



Autumn Birches, 1916
TT-012



Autumn Foliage, 1915
TT-013



Autumn Foliage, 1916
TT-014

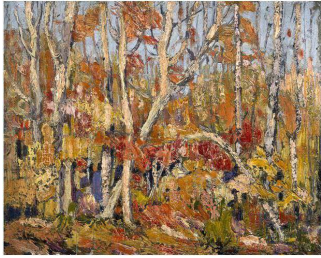


Autumn Foliage, 1916 II
TT-015



Autumn Landscape, 1914
TT-016

Tom Thomson Collection



Autumn Tapestry, Tangled
Trees
TT-017



Autumn, Algonquin Park,
1915
TT-018



Autumn, Algonquin Park,
1916
TT-019



Autumn, Algonquin Park,
Fall, 1914
TT-020



Autumn, Canoe Lake
TT-021



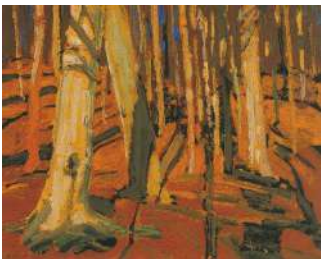
Autumn, Petawawa, 1916
TT-022



Autumn's Garland
TT-023



Bateaux, 1916
TT-024



Beech Grove, 1916
TT-025



Big Birch
TT-026



Big Elm
TT-027



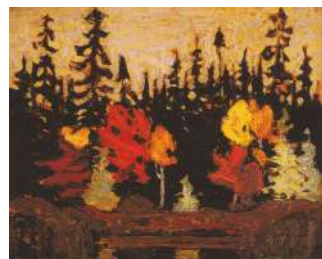
Birches and Cedars, Fall,
1915
TT-028



Birches in Winter,
Algonquin Park, 1914
TT-029



Birches, Spring, 1917
TT-030



Black Spruce and Maple,
1915
TT-031



Black Spruce in Autumn,
1915
TT-032

Tom Thomson Collection



Blueberry Bushes, October,
1916
TT-033



Brown Bushes, Late
Autumn
TT-034



Burned Over Land
TT-035



Burnt Area, Ragged Rocks
TT-036



Burnt Country
TT-037



Burnt Land, 1915
TT-038



Burnt Land at Sunset, 1915
TT-039



Burnt-Over Forest
TT-040



Campfire
TT-041



Canadian Flowers
TT-042



Canoe Lake
TT-043



Canoe Lake II
TT-044



Cedars and Pines
TT-045



Chill, November
TT-046



Clearing, Algonquin Park
TT-047



Cold Spring in Algonquin
Park
TT-048

Tom Thomson Collection



Cranberry Marsh
TT-049



Cranberry Marsh and Hill
TT-050



Dark Thunderheads
TT-051



Dark Waters
TT-052



Dawn
TT-053



Dead Spruce
TT-054



Drowned Land
TT-055



Early Morning, Georgian Bay
TT-056



Early Snow, 1916
TT-057



Early Spring in Cauchon Lake, 1916
TT-058



Early Spring, 1917
TT-059



Early Spring, Canoe Lake, 1917
TT-060



Early Winter Growth, 1916
TT-061



Evening
TT-062



Evening Sky
TT-063



Evening, Canoe Lake
TT-064

Tom Thomson Collection



Evening, Pine Island,
Summer, 1914
TT-065



Fall Woods
TT-066



Fire-Swept Hills, 1915
TT-067



First Snow in Autumn
TT-068



First Snow, Canoe Lake,
1915
TT-069



Flowers
TT-070



Forbes Hill, Huntsville
TT-071



Forest, October, 1915
TT-072



Forest, October, 1916
TT-073



Frost Laden Cedars
TT-074



Georgian Bay, Bying Inlet
TT-075



Giant's Tomb, Georgian
Bay, 1914
TT-076



Golden Autumn
TT-077



Grey Day, Giant's Tomb,
1914
TT-078



Grey Sky
TT-079



Hillside
TT-080

Tom Thomson Collection



Hot Summer Moonlight
TT-081



In Algonquin Park, 1914
TT-082



In the Northland, 1915
TT-083



Islands, Canoe Lake
TT-084



Lake and Red Tree
TT-085



Lake, Shore and Sky
TT-086



Lakeside, Spring
TT-087



Larry Dickson's Cabin, 1917
TT-088



Late Autumn
TT-089



Late Snow
TT-090



Lightning, Canoe Lake,
1915
TT-091



Little Cauchon Lake
TT-092



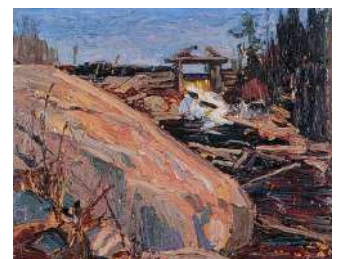
Log Jam
TT-093



Logging, Spring, Algonquin
Park, 1916
TT-094



Lumber Camp, Night
TT-095



Lumber Dam, 1915
TT-096

Tom Thomson Collection



Maple Saplings, October
TT-097



Maple Woods, Bare Trunks
TT-098



Marguerites, Wood Lilies
and Vetch, 1915
TT-099



Marsh, Lake Scugog
TT-100



Melting Snow
TT-101



Moccasin Flower, 1915
TT-102



Moonlight and Birches,
1916
TT-103



Moonlight, 1915
TT-104



Moose at Night, 1916
TT-105



Moose Crossing a River
TT-106



Morning, 1915
TT-107



Mowat Lodge
TT-108



Near Grand Lake
TT-109



Near Owen Sound
TT-110



Nocturne, 1915
TT-111



Nocturne, 1916
TT-112

Tom Thomson Collection



Nocturne, the Birches
TT-113



Northern Clouds
TT-114



Northern Lake
TT-115



Northern Landscape, 1915
TT-116



Northern Lights
TT-117



Northern Lights, 1915
TT-118



Northern River
TT-119



Northern River Study
TT-120



Northern Shore
TT-121



Northern Spring
TT-122



Northland Sunset
TT-123



Old Lumber Dam, Algonquin
Park
TT-124



Open Water, Joe Creek,
1914
TT-125



Opulent October, 1916
TT-126

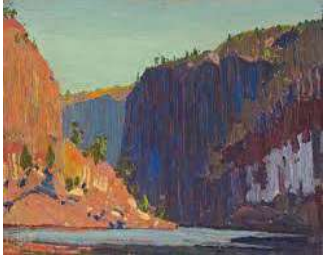


Path Behind Mowat Lodge,
1917
TT-127



Petawawa Gorge
TT-128

Tom Thomson *Collection*



Petawawa Gorges, Fall,
1916
TT-129



Petawawa Gorges, Night
TT-130



Petawawa Gorges,
September, 1916
TT-131



Phantom of Algonquin
TT-132



Pine Cleft Rock
TT-133



Pine Country
TT-134



Pine Island, 1916
TT-135



Pine Island, Georgian Bay,
1914
TT-136



Pine Trees at Sunset, 1915
TT-137



Pink Birches, 1915
TT-138



Purple Hill, 1916
TT-139



Ragged Lake, 1915
TT-140



Ragged Oaks, Fall, 1916
TT-141



Rain Clouds
TT-142



Rainbow
TT-143



Red and Gold
TT-144

Tom Thomson Collection



Red Leaves, 1914
TT-145



Red Rocks, Georgian Bay,
1914
TT-146



Red Sumac
TT-147



Rocky Shore
TT-148



Round Lake, Mud Bay
TT-149



Sand Hill, 1915
TT-150



Sandbank with Logs,
1916
TT-151



Shack in the North Country
TT-152



Shore with Houses
TT-153



Silver Birches
TT-154



Sky: The Light That Never
Was
TT-155



Smoke Lake I
TT-156



Smoke Lake II
TT-157



Smoke Lake III
TT-158



Snow and Earth, 1917
TT-159



Snow and Rocks
TT-160

Tom Thomson Collection



Snow-Covered Trees
TT-161



Snow in October, 1916
TT-162



Snow in the Village, 1915
TT-163



Snow in the Woods
TT-164



Snow Pillars in the Sky
TT-165



Snowy Trail, Algonquin
TT-166



Soft Maple in Autumn, 1914
TT-167



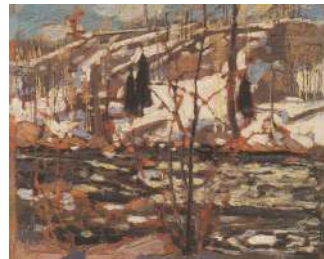
Sombre Day
TT-168



Split Rock Gap
TT-169



Split Rock, Georgian Bay,
1915
TT-170



Spring Breakup, 1917
TT-171



Spring Flood, 1917
TT-172



Spring, French River
TT-173



Spring Ice, 1916
TT-174



Spring in Algonquin
TT-175



Spring, 1917
TT-176

Tom Thomson *Collection*



Spring, Algonquin Park,
1916
TT-177



Spring, Algonquin, 1914
TT-178



Spruce and Tamarack, Fall,
1916
TT-179



Storm Cloud
TT-180



Stream Bank and Tree
TT-181



Summer Clouds
TT-182



Summer Day
TT-183



Summer Shore, Georgian
Bay
TT-184



Sun in the Bush, 1916
TT-185



Sunrise
TT-186



Sunset, 1915
TT-187



Sunset, Algonquin Park
TT-188



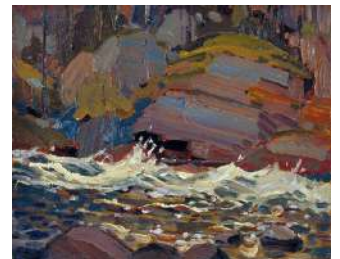
Sunset Sky
TT-189



Sunset, Canoe Lake I
TT-190



Sunset, Canoe Lake II
TT-191



Swift Water
TT-192

Tom Thomson *Collection*



Tamarack, 1916
TT-193



Tamarack Swamp I
TT-194



Tamarack Swamp II
TT-195



Tamarack, Fall, 1915
TT-196



Tea Lake Dam I
TT-197



Tea Lake Dam II
TT-198



Team of Horses
TT-199



**The Birch Grove,
Algonquin Park, 1916**
TT-200



The Bridge
TT-201



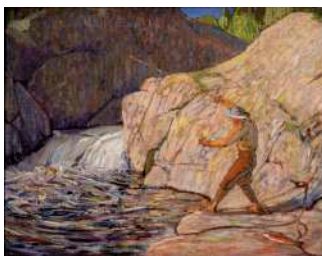
The Canoe
TT-202



The Dead Pine, 1916
TT-203



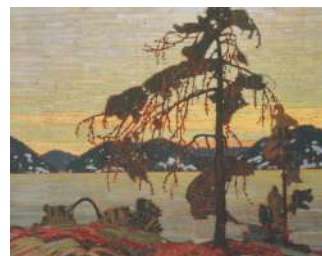
The Drive, 1916
TT-204



The Fisherman
TT-205



The Hill in Autumn
TT-206



The Jack Pine, 1916
TT-207



The Lily Pond, 1914
TT-208

Tom Thomson Collection



The Marsh, Early Spring
TT-209



The Poachers, 1916
TT-210



The Pointers
TT-211



The Pool, 1915
TT-212



The Rapids, 1917
TT-213



The Tent
TT-214



The West Wind, 1917
TT-215



The Zeppelins
TT-216



Thundercloud
TT-217



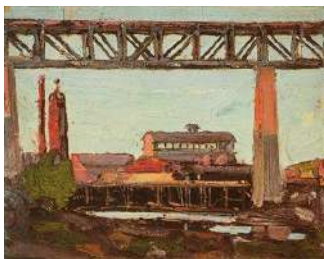
Timber Chute I
TT-218



Timber Chute II
TT-219



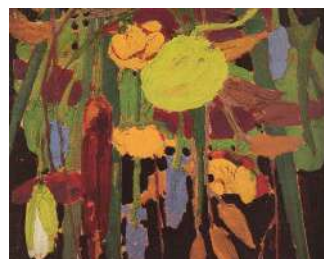
Trees, 1908
TT-220



Trestle at Parry Sound
TT-221



View from the Window of
Grip
TT-222



Water Flowers, 1915
TT-223



White Birch Grove, 1917
TT-224

Tom Thomson *Collection*



White Birches
TT-225



Wild Cherry Trees in Blossom, 1915
TT-226



Wild Flowers
TT-227



Windy Day
TT-228



Windy Sky
TT-229



Winter in the Woods
TT-230



Winter Morning, 1915
TT-231



Winter Thaw
TT-232



Winter Thaw in the Woods, 1916
TT-233



Wood Interior, Autumn, Algonquin Park, 1914
TT-234



Wood Interior, Winter
TT-235



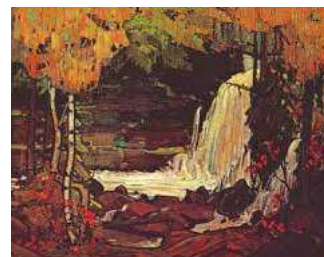
Woodland Interior
TT-236



Woodland Interior, Fall
TT-237



Woodland Stream
TT-238



Woodland Waterfall
TT-239



Woods in Winter
TT-240

Tom Thomson *Collection*



Yellow Sunset
TT-241