

Marine Plant Systems Pty Ltd

CAPABILITY STATEMENT



www.marineplantsystems.com



INTRODUCTION AND COMPANY OVERVIEW

Marine Plant Systems was established in 1996 to support the Royal Australian Navy's Mine Hunter Program. Since that time we have grown to support a wide variety of Australian and New Zealand shipbuilding initiatives within the defence, commercial and oil and gas industries. Our deliverables include sales, service and after sales support of specialty marine equipment manufactured in Europe and the United States.

Success in sales relies on our ability to accurately identify a project's requirements and the specifications defining the scope of supply. Our sales staff includes marine engineers and project managers supported by world class manufacturers of high quality marine equipment. Our collective experience as crew, project managers and marine surveyors enables us to identify requirements, benefits and risks. Our proposals capture the lessons learned and define the merits and value of the solutions under consideration.

Our service capability complements our sales program and provides us with the unique ability to ensure that our deliverables seamlessly integrate into the customer's project. Our factory trained marine engineers oversee the installation process, participate in commissioning and provide follow on support to the ship's staff. Service management includes serial number tracking within our HansaWorld Enterprise ERP system, OHS documentation, quality control and project management according to the Prince2^{®1} methodology.

Our after sales program was developed by marine engineers and project managers to ensure that the communication and documentation processes will continually exceed our client's expectations. Providing after sales support to the marine industry requires our staff to think like crew. Our performance is swift. We provide accurate and meaningful correspondence saving our clients time and money. Our objective remains to provide valuable information and resources to the right persons at the right time to reduce risk and increase the benefits of owning our brands.

¹PRINCE[®] is a Registered Trade Mark of AXELOS Limited PRINCE2[®] is a Registered Trade Mark of AXELOS Limited



CORE COMPETENCIES AND ACHIEVEMENTS

Marine Plant Systems maintain exclusive agency agreements with original manufacturers of quality, type-approved marine equipment. We consult with designers, naval architects and ship owners and provide assistance with selecting solutions appropriate for their project. Our accredited project managers ensure that our deliverables align with commercial or defence requirements allowing us to accurately manage risk and provide desirable services with measurable benefits.

Our scope of deliverables includes the supply, service and support of the following systems:

CATEGORY	SOLUTION
Environmental Solutions	Sewage treatment plants
	Oil discharge monitoring equipment
	Oily water separators
	Solid waste handling machinery
	Ballast water treatment systems
	Inventory of hazardous materials
Mineral Oil Separation	Fuel oil separators
	Lube oil separators
Support Systems	Compressed air systems
	Kitchen and laundry equipment
	Vacuum toilet systems
	Reverse osmosis desalination plants
	Potable water disinfection and treatment
	Water heaters
	Water pressurisation, filtration and delivery units
Cathodic Protection	Helm and passenger seating solutions
	Sea water pipe work anti-fouling
	Impressed current cathodic protection (hull protection)
Materials	Box cooler anti-fouling
	Blucher marine drainage piping systems
	Bulk head penetration sealing systems

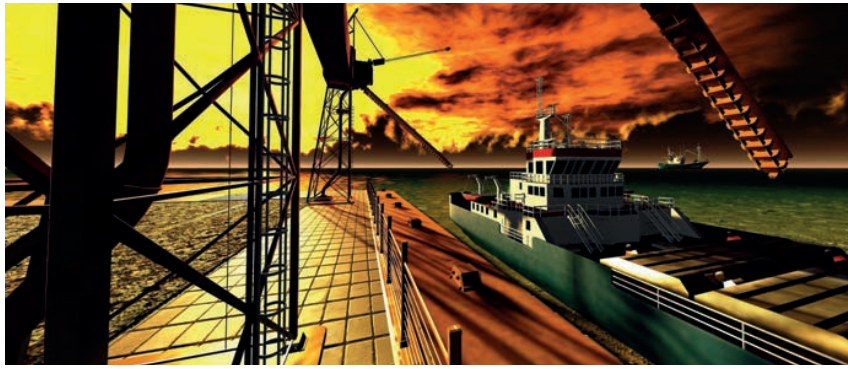
Our scope of delivery extends beyond the supply of the equipment. Our engineers are factory trained and provide installation assistance, commissioning, maintenance, troubleshooting and repairs. Our commitment to training and continuous education permits us to deliver suitably qualified personnel licensed to deliver scope across a range of platforms in almost any environment.



Our achievements include the supply of equipment, training and service packages to the following

<div>  <div> The Commonwealth of Australia Royal Australian Navy New Zealand Defence Force Royal New Zealand Navy </div>  </div>		
CLASS	VESSELS	DELIVERABLES
Minehunter Class	Diamantina, Gascoyne, Hawkesbury, Huon, Norma, Yarra	Sewage treatment, vac toilet system, commissioning, training, ILS, TLS.
Armidale Class	Albany, Ararat, Armidale, Bathurst, Broom, Bundaberg, Childers, Glenelg, Larrakia, Launceston, Maitland, Maryborough, Pirie, Wollongong	Sewage treatment, vac toilet system, solid waste machinery, training, maintenance, FOC, ILS, TLS.
Balikpapan Class	Betano, Tarakan, Wewak, Waterhen, Brunei, Labuan	Sewage treatment, electrochlorinator, commissioning, training, ILS, TLS.
Kanimbla Class	Manoora, Kanimbla	Sewage treatment, electrochlorinator, commissioning, training, ILS, TLS.
Collins Class	Collins, Farncomb, Waller, Dechaineux, Sheean, Rankin	Sea water pipe work anti-fouling system; oily water separator; ILS; TLS.
Support Ship	Sirius	Engineering change; maintenance services: fuel and lube oil separators; pilot chair.
Air Warfare Destroyer	Hobart, Brisbane, Sydney	Blucher pipe system; vac. toilet system support.
Landing Helicopter Dock	Canberra, Adelaide	Blucher pipe system; vac. toilet system support.
Survey Ship	Melville, Leeuwin	Engineering change; cathodic protection system; training; ILS; TLS.
Protector Class	RNZN Rotoiti, Hawea, Pukaki, Taupo	Sewage treatment, commissioning, training, ILS, TLS.

<div>  <div> The Commonwealth of Australia Australian Customs and Border Security </div> </div>		
CLASS	VESSELS	DELIVERABLES
Cape Class	Cape St George, Cape Byron, Cape Nelson, Cape Sorell, Cape Jervis, Cape Leveque, Cape Wessel, Cape York.	Desalination plants; potable water test equipment; potable water conditioning and sterilisation systems (silver and ultra violet); vac. toilet system; cathodic protection monitoring; Blucher pipe system; commissioning; training; SDRL; ILS; TLS.



OUR CLIENTS



MEMBERSHIPS

Marine Plant Systems is a member of the following organisations:

- Australian Shipbuilding and Repair Group (www.asrg.asn.au)
- IFAP Corporate Member (www.ifap.asn.au)
- Chamber of Commerce and Industry Western Australia (cciwa.com)



QUALITY MANAGEMENT

All of the products delivered by Marine Plant Systems are produced to the highest marine standard by manufacturers with accredited ISO quality management systems. Each machine subject to regulatory type approval is available for delivery in accordance with nearly every international classification and flag state requirement. Our services are documented and delivered according to the Prince2® (Projects in Controlled Environments) project management methodology.

Our documentation, customer relationship management, accounting, supply, service and equipment serial number tracking is completely managed within a state-of-the art enterprise resource software solution by HansaWorld.

Our staff can manage any element of our deliverables from anywhere in the world while connected to the internet.

Marine Plant Systems maintains marine and general liability insurance as well as workers compensation insurance through a nationally recognised and reputable insurer.

Marine Plant Systems is committed to taking all reasonably practicable action to protect its personnel from harm at work. Occupational health and safety is actively managed throughout all levels of our organisation and we maintain an Occupational Safety and Health Safety Management System in accordance with regulations and the requirements of our clients and working environment.

PRODUCT AND SERVICE BRANDS





MANAGEMENT PROFILES

John and Christine Neskudla, Managing Directors

John Neskudla and his wife Christine Neskudla are the founders and managing directors of Marine Plant Systems. John’s maritime career as a master mariner and engineer combined with Christine’s business management expertise provided the foundation for the company’s inception and original business plan.

Bryan Little, General Manager (2007)

Bryan Little is an experienced marine engineer and vessel manager with four years shipbuilding experience. Bryan is a member of RINA and an accredited Prince2® project management practitioner.

Shelley Bojesen, Business Manager (2008)

Shelley Bojesen is the financial heart and soul of Marine Plant Systems. Shelley’s formal education in finance, multi-currency accounting, tax and international banking regulations forms the tools and techniques required to successfully drive Marine Plant Systems.

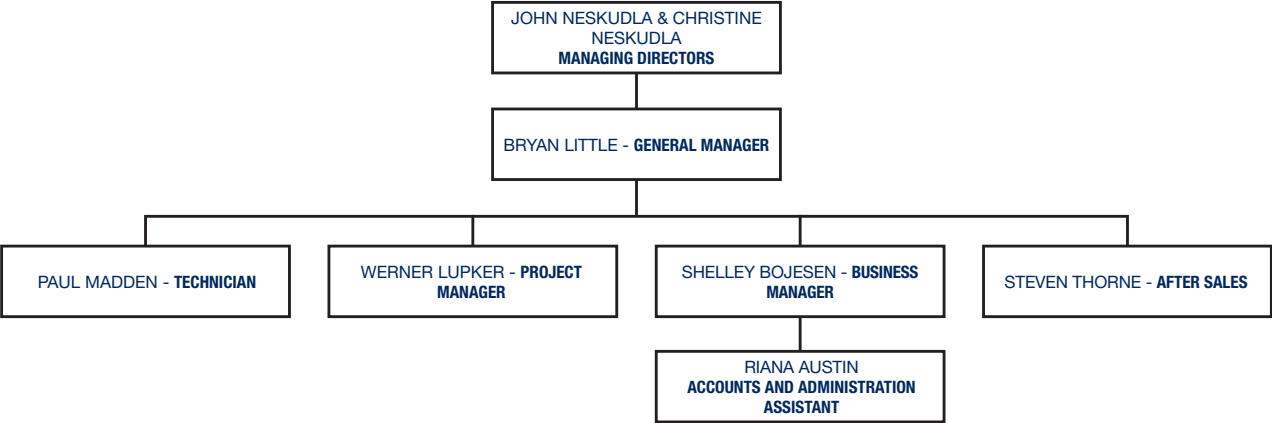
Werner Lupker, Project Manager (2010)

Werner Lupker is a formally educated industrial engineer and an accredited Prince2® project management practitioner.

Steven Thorne, After Sales Manager (2012)

Steven Thorne actively contributes to the company's business development and has served in the marine industry as ship’s crew in a variety of environments.

ORGANISATION CHART



CONTACT DETAILS

Managing Director	Mr. John R. Neskudla Direct telephone number 0412 856 445 john@marineplantsystems.com
Managing Director	Mrs. Christine Neskudla Direct telephone number 0410 427 389 christine@marineplantsystems.com
General Manager	Mr. Bryan D. Little Direct telephone number 0432 479 623 bryan@marineplantsystems.com
Business Manager	Mrs. Shelley Bojesen Direct telephone number 0423 762 046 shelley@marineplantsystems.com
Accounts and Administration Assistant	Ms. Riana Austin Direct telephone number 0412 042 270 riana@marineplantsystems.com
Project Manager	Mr. Werner Lupker Direct telephone number 0423 763 687 werner@marineplantsystems.com
After Sales Manager	Mr. Steven Thorne Direct telephone number 0412 690 959 steven@marineplantsystems.com
Senior Service Engineer	Mr. Paul Madden Direct telephone number 0407 195 834 paul@marineplantsystems.com

Australian Business Number (ABN) 61 078 997 449

Australian Company Number (ACN) 078 997 449



Marine Plant Systems Pty Ltd

T (08) 9410 0144 **F** (08) 9410 0155

E sales@marineplantsystems.com

6/8 Redemptora Road, Henderson WA 6166
PO Box 603, Claremont Western Australia 6910

www.marineplantsystems.com