



Weber

PRODUCTS



UIF

weberproducts.com



Weber PRODUCTS

TRUCK BODIES: Steel & Aluminum
Ramp, Storage, Flatbeds, Custom

HITCHES: Mechanical & Hydraulic - 2, 4 and 6 way

EXTENSION MIRRORS: Steel & Aluminum - Electric & Hydraulic



Also offering a wide variety of
Modular Home Carrier sizes and parts

UIF



PLEASE NOTE THAT THE ITEMS IN THIS CATALOG ARE STANDARD ITEMS.

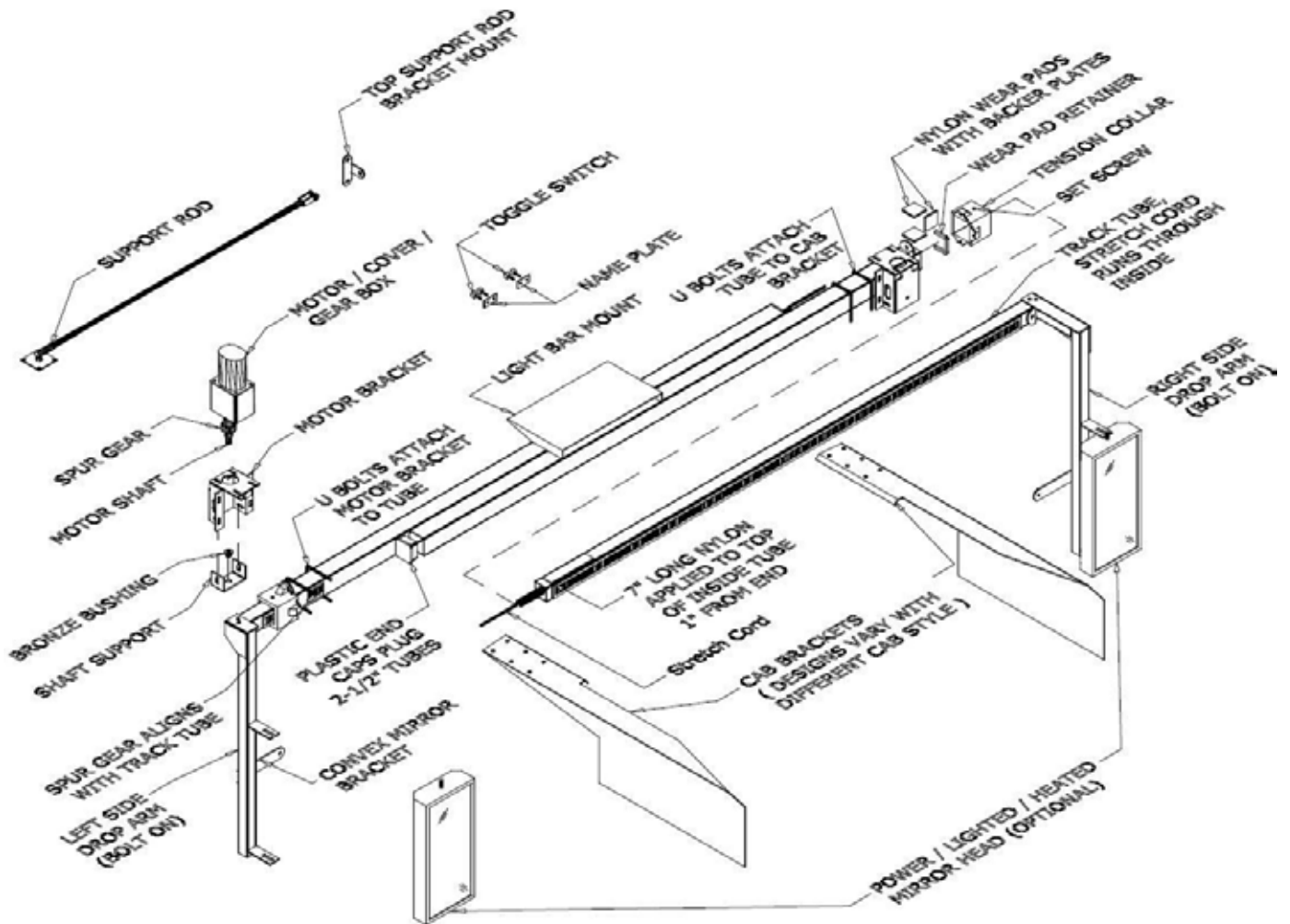
**WE ARE CONSTANTLY ON THE LOOKOUT FOR NEW PRODUCTS
TO OFFER. IF THERE IS SOMETHING OUT THERE THAT SPARKS YOUR
INTEREST OR SOMETHING THAT YOU NEED AND WE DO NOT HAVE IT,
PLEASE CONTACT SALES AT THE FOLLOWING PHONE NUMBERS:**

1-800-323-2890

1-814-226-5926

www.weberproducts.com

POWERED TRUCK MIRROR BAR



INSTALLED MIRROR BARS



Aluminum Mirror Bar Option



Standard Steel Mirror Bar

POWER MIRROR BAR ASSEMBLY “COMPLETE” PACKAGE

1) Mirror Head 357 Magnum-LH (2-Way)	#6001L	5) 14-16 Blue 3/16" Connector	#SB23710
1) Mirror Head 357 Magnum-RH (2-Way)	#6001R	11) Insulated Spade Lug for Wire	#C541203
(PWR/HTD/LTD w/Switch)		2) 1/2" Black Plastic Grommets	#SB500
*****OR*****		20) 1/4" Black Cable Ties.....	#LPC44B
2) Mirror Head Retractable Proviews (4-Way).....	#6002	8) U-Bolt w/ Hardware	#1346C
(PWR/HTD/LTD w/Switch)		2) Momentary Toggle Switch	#1348
2) Motor Gear Box Complete.....	#4005	1) Mirror Arms Switch Decal.....	#1525
w/Spur Gear, Shaft & Pin		1) Mirror Heads Switch Decal.....	#1526
2) Mirror Motor Bracket.....	#4008	2) 15 AMP Circuit Breaker.....	#CB15
w/Shaft Support, Bushing & Hardware		2) 30 AMP Circuit Breaker.....	#CB30
2) Mirror Bar Brace Assembly	#4006	1) Bus Bar 3/8 x 7 w/8 holes.....	#123
w/Rod, Yoke End, Swivel & Plate		2) 1-1/2" Sq End Plug for Drop Arm.....	#1531
2) Tension Collar Assembly	#1331	2) 2-1/2" Sq End Plug for Top Bar.....	#4011
w/Supports, Wear Pads & Hardware		2) 2" Sq End Plug for Track Tube	#4012
2) Stretch Cord (8 wire)	#1316	2) Track Tube Glider 1-1/2" x 7".....	#1858TT
30) Gray 18/8 Control Cable/ft.....	#1005	2) Track Tube	#1333C
40) 14GA Black Wire/ft	#14GABLK	2) Top Bar (welded)	#1341C
40) 14GA Red Wire/ft	#14GARED	2) Drop Arm.....	#1342C
1) 10-12 Yellow 1/4" Connector.....	#SC23014	2) Custom Cab Bracket	#1343C

POWER MIRROR BAR ASSEMBLY INDIVIDUAL PARTS LIST

Complete Assy power arms/no heads.....	#1340	Track Tubes (Power Mirror Bar Assy).....	#1333C
Complete Assy power in/out head (357 Mag)	#1344	Track only	#1334
Complete Assy power 4 way head (Proview)	#1344PV	Top Bar only.....	#1341
Motor gear box assembly	#4000	Top Bars welded (Power Bar Assy)	#1341C
Motor gear box w/ spur gear & shaft complete	#4005	Drop Arm LH/RH	#1342C
Spur gear & shaft.....	#1350	Cab Brackets (custom)	#1343C
Motor cover.....	#1351	U-bolt.....	#1346
Motor Bracket (w/support/ bushing/ hrdwr).....	#4008	U-bolt w/hardware	#1346C
Bronze bushing only	#FB8105	1-1/2" sq plastic end cap for Drop Arm.....	#1531
Toggle switch-momentary	#1348	2-1/2" sq plastic end cap for Top Bar	#4011
Toggle switch-lighted-on/off	#1349	2" sq plastic end cap for Track Tube.....	#4012
Mirror arms switch decal.....	#1525	Stretch Cord (8 wire)	#1316
Mirror heads switch decal.....	#1526	Gray 18/8 control cable.....	#1005
Tension collar assembly complete.....	#1331	Mirror Brace assembly.....	#4006
Nylon wear pads (6/set).....	#1332	5" convex mirror (optional)	#1357
Track Tube only	#1333	8" convex mirror (optional)	#1356



2010 Mirrors



- Two-way remote controlled adjustable West Coast mirror system.
- Velvac's 2010 west coast mirror offers the widest viewing area available!
- Larger glass 2010 mirrors feature over 104 square inch viewing area.
- Designed to fit any standard 17 1/2" span loop.
- Replaceable 1/8" FSC mirror glass.
- 4 amp, temperature-controlled heating element provides quick, even defrosting and prevents mirror glass from overheating.
- Polished 300 series stainless steel outer shell and heavy-duty ABS plastic inner housing combine to ensure durability and good looks.
- Optional marker light provides additional safety by indicating the widest point of the vehicle to oncoming drivers.
- Mounting hardware included.

Remote 2010 Mirror Features

- Heavy-duty, 1.5 RPM motor for fast, smooth adjustments.
- Sealed motor housing for protection against moisture and contaminants.
- Automatic slip clutch for manual adjustments without gear damage.
- Interchangeable wire harness allows for convenient retrofitting.
- Remote models also include a momentary motor switch.



POWER MIRROR HEADS CONTINUED



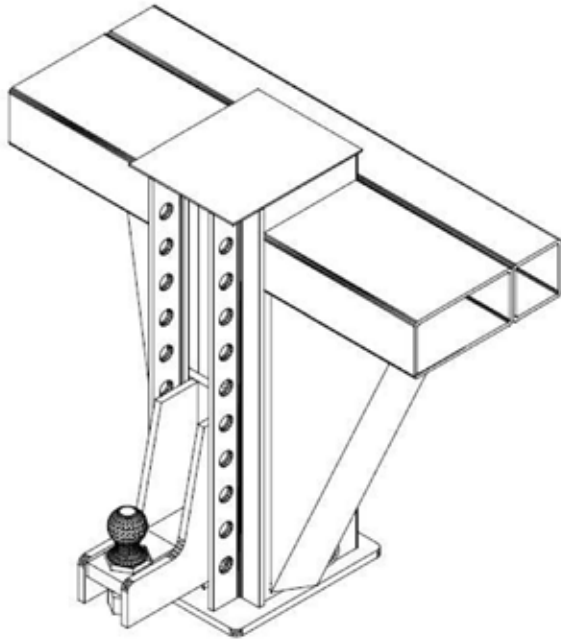
8" Convex Mirror #1356



PWR/LTD/HTD 4-Way #6002

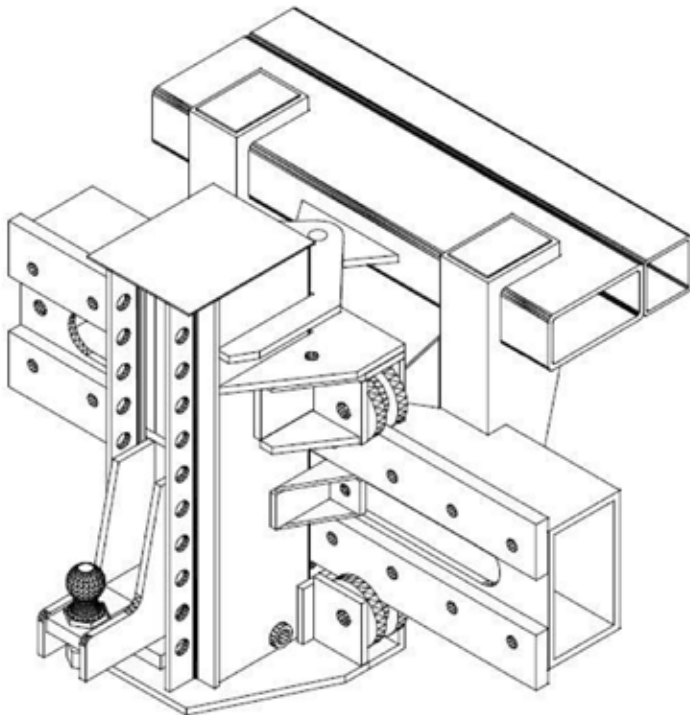
Proview Joystick #6003

2-WAY HITCH (Shown w/standard receiver)



Manual Up & Down Hitch	#1110
18" Hydraulic Up & Down	
Electric Valve	#1127
Cylinder Only	#1167
Ball Mount Only	#1115
Lock Pin	#1113
Safety Pin	#1114

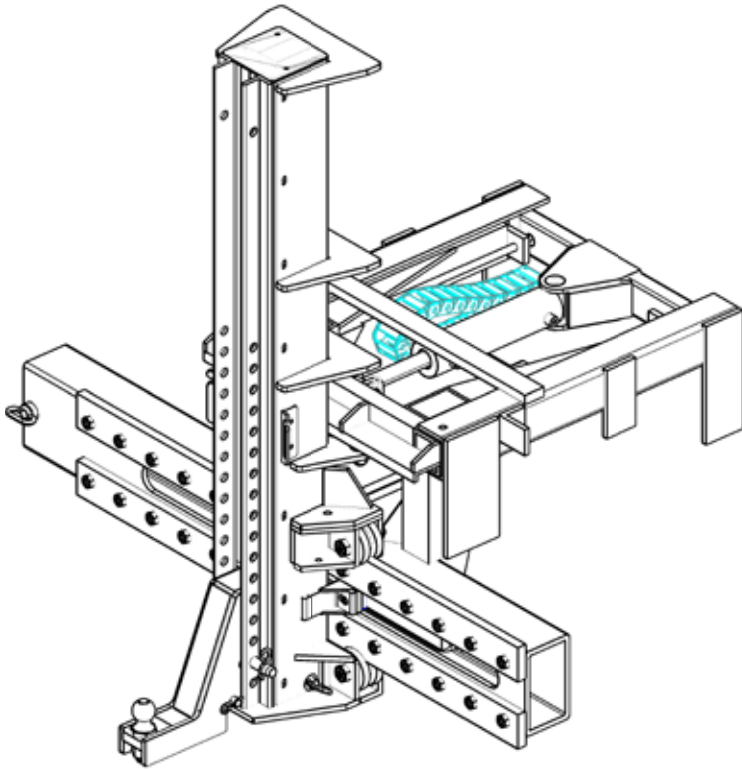
4-WAY HITCH (Short Tower Shown)



4-Way Hitch allows for 20" of side to side stroke as well as three different options for vertical lift.

Short tower	18" Vertical
Mid Tower	24" Vertical
High Tower	60" Vertical

6-WAY HITCH (High Tower Wide Body Shown)

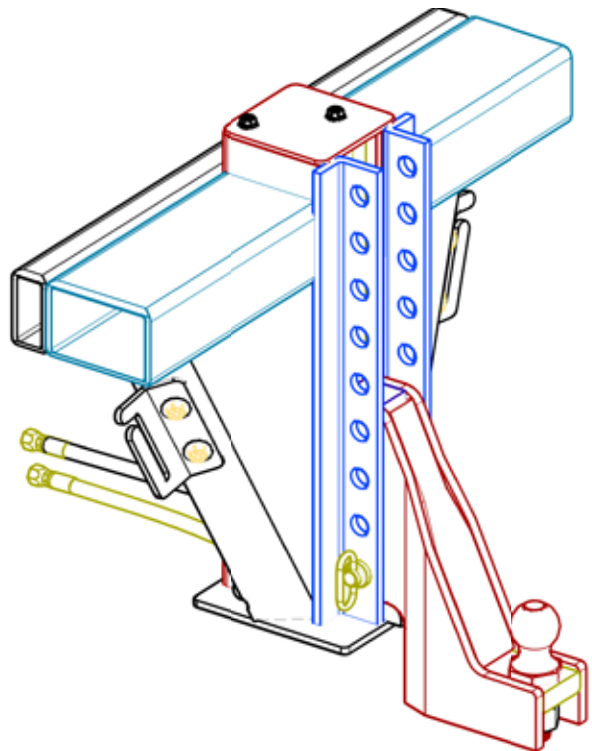


6-Way Hitch allows for 16" of in/out stroke, 36" of side to side stroke as well as three different options for vertical lift.

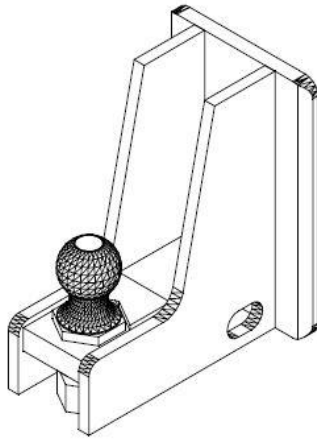
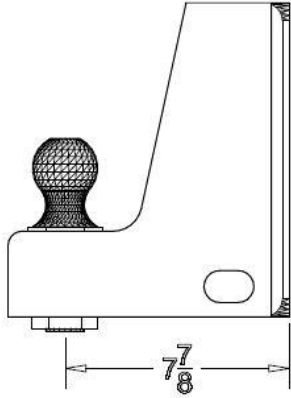
20" Standard width side to side travel also available.

MID SERIES TRUCKS:

Mid Series Hitch - Standard Height - 12" Stroke

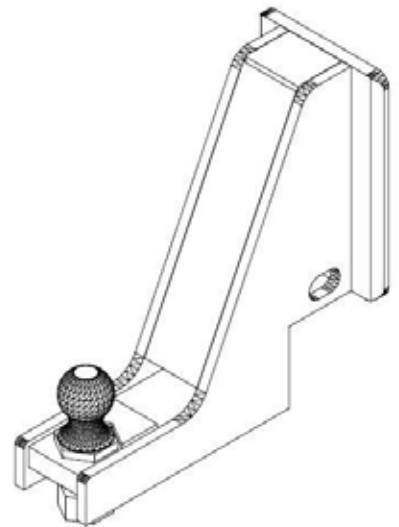
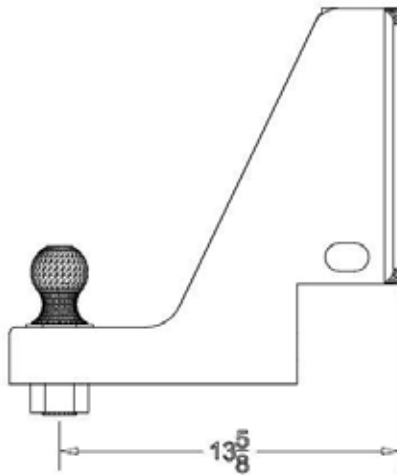


COUPLERS

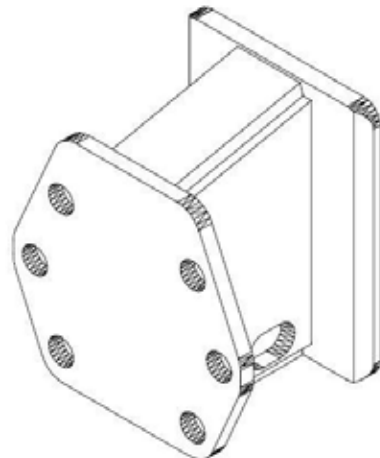


STANDARD BALL ASSEMBLY

4" DROP BALL ASSEMBLY



PINTLE ASSEMBLY



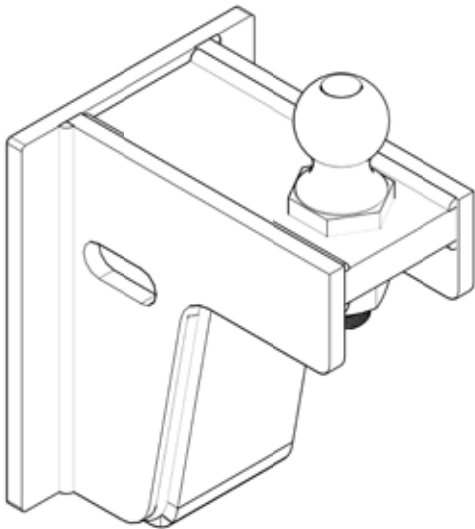
HITCH ACCESSORIES



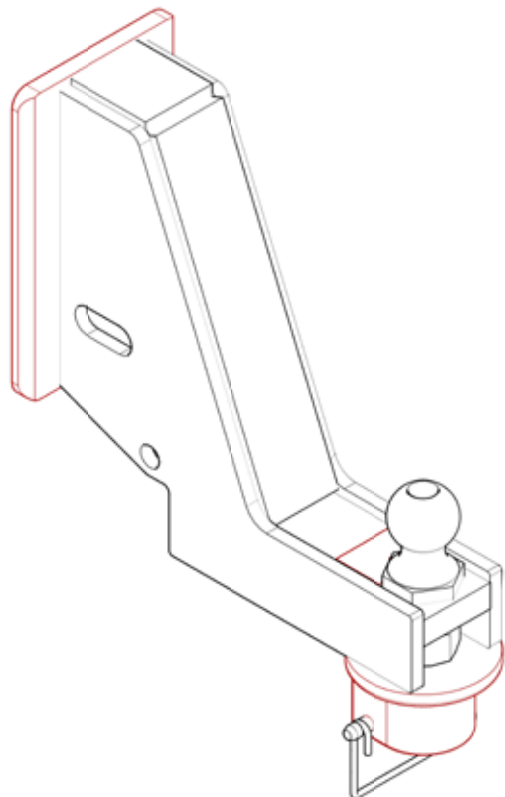
HI-LOW HITCH.....#1148

This assembly attaches to most Weber Hydraulic hitches, and enables a power lift from ground level or many feet off the ground, depending upon ball selection on the unit.

4 IN DROP RECEIVER WITH 2 5/16" GOOSENECK COUPLER UNDER.....#0190



GOOSENECK ADAPTER.....#0099



TRUCK BODY ACCESSORIES



SQUARE CUT REAR FLAP

24" X 18"#1435

24" X 36"#1431

AIR REEL

3/8" X 100' Open Face/Steel Stamped ...#1435

3/8" x 70' Enclosed/Aluminum#1431



UNCUT REAR FENDER

Fender#1415

**** Available in Steel and Stainless****

TRUCK BODY ACCESSORIES CONTINUED



FLUSH LOCK

Stainless (w/keys)..... #5470
Gasket for Flush Lock..... #PHG-1



DOOR LATCH

Southco (black).....#23325



T-HANDLE LATCH

Stainless w/Mounting Studs, keys & Gasket #L8855
Gasket Only for T-Handle Latch.....#L8815GO

TRUCK BODIES



CUSTOM STORAGE BODIES

- *Multiple Designs Available
- *Full Height or 1/2 Size Toolboxes
- *Single or Tandem Axle Available

HYDRA SLIDE BED

- *Hydraulic ramp assembly
- *With or without fold ups
- *Dual pump assembly
- *Load and strap down from the safety of ground level
- *No more climbing down the side of the truck



TRUCK BODIES



CUSTOM ALUMINUM BEDS AND TOOLBOXES AVAILABLE.

- REMOVABLE SIDES ALLOW FOR USE
OF 5TH WHEEL.

STEEL FLATBED WITH TRAP DOOR

AND 4-WAY HITCH ALLOWS FULL USE
OF GOOSENECK HITCH.



TRUCK BODIES



STEEL “HOUSE TUG” BED

*Shown with 6 way extended side travel, mid tower hitch



TWIN FLIP UP RAMP STYLE BED

*Two-way hitch
*Ramps are folded and unfolded using the hydraulic pump assembly
*With slide out extensions

D.O.T. APPROVED SIGNS

FRONT FOLDING METAL OSL SIGNS

Reversible - Two signs is one for tow vehicle.



- Versatile Double Sided Sign
- Lightweight Metal Alloy
- Baked on Enamel
- Scratch Resistant
- Will not Fade, Crack, Peel or Rust
- Custom Designed Fold for Easy Storage

6' OSL/WL Metal Sign #3100

6' OSL/16' WL Metal Sign #3102

Length 6'0" Letters 12"

Height 15" Letter Stroke 2"

7' OSL/WL Metal Sign #3103

Length 7'0" Letters 16"

Height 18" Letter Stroke 2"

OVERSIZE LOAD SIGNS/BANNERS

Polycoated, Open Weave Mesh



- Long Lasting • Durable • Reinforced Metal Grommets • Weatherproof • Economical • Attach Easily with Shock Cords • Flexible for Easy Storage
- Highly Resistant to Most Chemicals • Black on Interstate Yellow

OSL/16' WL Heavy Duty Vinyl #3230

Length 8'0" Letters 16"

Height 18" Letter Stroke 2"

OSL Open Weave Mesh Fabric (PVC Coat) .#3235

NOTE 7' WIDE LOAD sign can be special ordered, minimum quantity 50.

QUICKMOUNT WARNING FLAGS & BRACKET ASSEMBLIES



First introduced to the trucking industry in 1996, the Quickmount flag is the BEST flag system on the market. The construction industry, trailer manufacturers, implement dealers, and snow plows love this product. Just press the flag assembly onto the bracket and twist - you're ready to go!

Grommet Oversize Load Sign



8" x 84" Durable vinyl coated poly-mesh material allows airflow. Wrap around double stitch border. Six #2 brass grommets for easy attachment. Bold 12" black letters, hand silk screened on yellow background. Easy to clean.

******We offer the complete line of OVERSIZE WARNING PRODUCTS******

D.O.T. APPROVED FLAGS & TOWING ACCESSORIES



STAFF FLAG

Red Nylon Tricot Mesh Flag

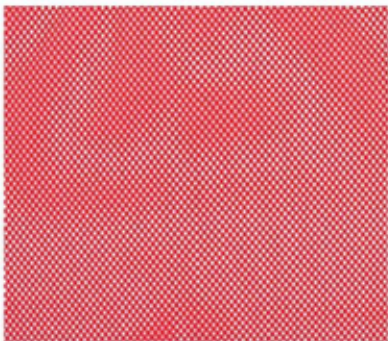
18" Flag on 3/4" Staff	#3310
18" Flag on 5/8" Staff	#3313
18" Flag on 1/2" Staff	#3311
24" Flag on 3/4" Staff	#3315
24" Flag on 5/8" Staff	#3312
24" Flag on 1/2" Staff	#3314



FLAG CLIP

Attaches flag to corner of coach. Loosen the screw & attach. Holds flag securely w/o ripping and won't scratch.

Plastic Flag Clips 25/Bag.....	#3351
Plastic Flag Clip each	#3335
18" Flag N Clip Kit (2 each)	#3334
24" Flag N Clip Kit (2 each)	#3335



CORNER FLAG

Red Tricot Mesh Flag.

Use with flag clips on corner of mobile home.

18" Nylon Tricot Flags 6/pkg	#3330
24" Nylon Tricot Flags 6/pkg	#3331
18" Nylon Tricot Flag (each).....	#3332
24" Nylon Tricot Flag (each).....	#3333



STAFF FLAG HOLDER

Stainless Holder (each)	#3323
-------------------------------	-------

FRONT METAL SIGN BRACKET

Metal Sign Bracket (set of 3)	#3112
-------------------------------------	-------

SAFETY EQUIPMENT



PIGTAIL HARNESS

Connector with copper alligator clips, covered with color-coded boots.

6' Assembly#4200-6
 Boot (6 Color Available)#4201
 *Black, Yellow, Green, Red, Blue, White

SHUR-SET III BREAKAWAY KIT

Complete with rechargeable battery, nylon switch and case. Meets or exceeds D.O.T. specs for trailers having up to three axles equipped with electric brakes. These kits feature an advanced sealed/maintenance free, rechargeable 12-volt battery. Trickle Charger available 12-volt compatibility with automotive electrical systems.

Complete Kit.....#3600
 Complete Kit w/Trickle Charger#3601
 Rechargeable/Sealed Battery.....#3610
 Plastic Case.....#3612
 Nylon Switch.....#3620
 Metal Switch#3261
 Trickle Charger#3622



POLLAK CONNECTOR

9 PIN OMNI CONNECTIONS

Male Plug (Trailer End)#1003
 Female Plug (Truck End)#4201



BARGMAN CONNECTOR

7-Way Plug

Male Plug (Trailer End)#4155
 Female Plug (Truck End)#4154
 Mounting Bracket.....#4153



OMNI CONTROL BOX #1001

SAFETY EQUIPMENT CONTINUED



Prodigy P2 Brake Controller (Shown).....#90885

(For 1 to 4 Axle Trailers)

LIGHTS

TowMate Mobile Home Wireless Bar



Your complete system includes:

- The light, Transmitter (the sending unit that plugs into the truck), outrigger strobes, and a 7-Pin plug that you will use for charging.
- High performance electronics provide optimum range and reliability. 1,000 feet of "line-of-sight" range.
- Injection molding keeps the electronics completely sealed from the elements such as moisture corrosion, or vibration damage.

*******We offer the complete TowMate line of lights and accessories*******

LIGHTS CONTINUED



5" Square Work Light (Shown).....#COM1200-SQ

(12A @ 12.8VDC, 27 Watts, 1200 Lumen)

**Spire 100 Beacon
6.54" Amber LED.....#100SP-A**

(12A @ 12.8VDC, 27 Watts, 1200 Lumen)



3-3/8 Low Profile LED Strobe Light.....#8892300

(0.48A @ 12VDC)

5-1/8 Ultra Thin Mount LED Strobe Light.....#8892200

(0.5A @ 12VDC)



LIGHTS CONTINUED



48" Lightbar LED (Shown)

IP67 Rated, 13 Flash Patterns, 360 Degree Light, Ultra Thin



Federal Signal 15" Class 1 Mini Lightbar (Shown).....#45410HL-02

(4A (depends on flash pattern), 12V/26 LED's)

LIGHTS ON MIRROR BAR



TOW BAR WHEEL LIFT ASSEMBLY

Pin together assembly so it will break down into small parts.
Heavy duty design to carry most large vehicles.
Works with all Weber Hitches.



WIRE DIVERTER - WE-WD

Lightweight Aluminum construction.
Reduce low hanging wire damage.
Works on most manufacturer overhangs.
Quick knock down for storage in truck or escort vehicle.
Quick pin assembly.
Recommended and used by top transportation companies.
Save on roof damage claims.
Easy to install.





TERMS & CONDITIONS

CONDITIONS OF SALE

Prices and discounts are subject to change without notice.
We reserve the right to ship all orders at the price prevailing at the time of shipment.
Current price lists are sent to customers from time to time, and these override all previous price lists.
Wherever applicable, all prices are subject to Pennsylvania sales tax, unless shipped out of state.
All prices are F.O.B. Shippensburg, Pennsylvania.

SHIPPING AND DELIVERY

All shipments become legal property of the carrier at the time they pick up the freight.
Weber Products will do all we can to rectify any shipping errors on the behalf of our customers.
It is the customer's responsibility to make provisions for any lift trucks, hoists, ramps, etc., required to unload freight from the carrier's trailer.
It is important that all shipments be inspected by customer at time of delivery so that any problems, loss or damage are noted to the driver and on the freight bill.

TERMS

Prepayment or C.O.D. unless credit has been established with our company.
Visa, Master Card & American Express cards are accepted.
A credit card convenience fee may apply.
Money Order or Cashier's Check payment only accepted on C.O.D. shipments.
Advanced payment by Business or Personal check needs to be cleared through bank before order can ship.
ComCheks are accepted and available at Weber Products.
Open account terms are Net 30 Days.

C.O.D. SHIPMENTS

UPS: C.O.D. shipments include an additional fee set by United Parcel Service.
Truck Freight: C.O.D. payment of invoice will incur an additional cost equal to a percentage of the C.O.D. amount (approx. 3%) or a flat rate minimum charge to be determined by the freight company.
Note: Prepayment of freight charges will qualify you for discounts offered to our company by certain freight companies. Freight charges can be calculated at the time you place your order.

RETURNS

Authorization is required for returns. Returns are to be prepaid & subject to 15% restocking charge.



WEBER PRODUCTS

MFG BY:

UNIQUE FABRICATIONS, INC.

19059 PAINT BLVD

SHIPPENVILLE, PA 16254

1-800-323-2890 or 1-814-226-5926

www.weberproducts.com



PENNSYLVANIA



We are located just off
Exit 60 of
Interstate 80,
Shippensburg, PA exit.

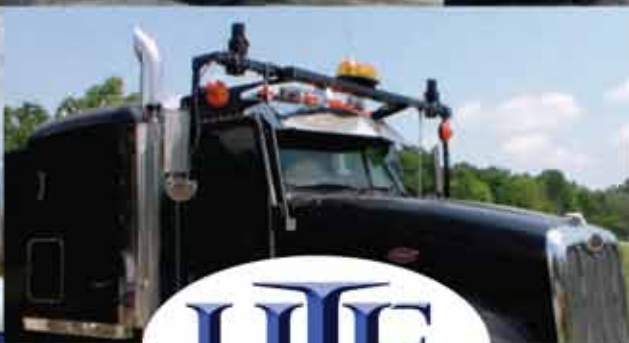


Home of
Weber
PRODUCTS
weberproducts.com

19059 Paint Blvd.
Shippensburg, PA 16254
Ph: 814.226.5926
Fx: 814.226.5961

unique@unqfab.com
www.unqfab.com

Toll Free: 800-323-2890



Home of
Weber
PRODUCTS
weberproducts.com

19059 Paint Blvd.
Shippensburg, PA 16254
Ph: 814.226.5926
Fx: 814.226.5961

unique@unqfab.com
www.unqfab.com

Toll Free: 800-323-2890