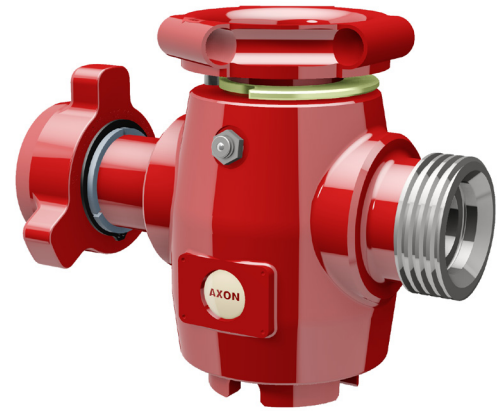


# Plugmaster™ Plug Valve

Designed for reliability and easy maintenance, the AXON Plugmaster™ Plug Valve is an optimized, quarter-turn valve that can be utilized for numerous high pressure and pumping applications, such as: blow-out preventer systems, snubbing, cementing, well stimulation, sand separator systems, gravel pack applications, coiled tubing systems, production testing, flow control and flow back operations, and more.

The compact design on our Plugmaster™ Plug Valve features a large bore that allows for larger tools to be worked through, as well as larger volumes to be pumped and flowed back. This results in less equipment required on location and decreased abrasive erosion.



## SPECIFICATIONS

### Technical Details

- Bore sizes 2" (2.06" bore), 3" (2.75" bore), and 4" (3.06" bore)
- One-piece, forged steel body is constructed from rugged materials that exceed API 6A specifications
- Standard valve trim offered for H<sub>2</sub>S service
- Available in hammer union or flanged connection
- Available in PSL-1 to 3 and Temperature Class P to U

## FEATURES / BENEFITS

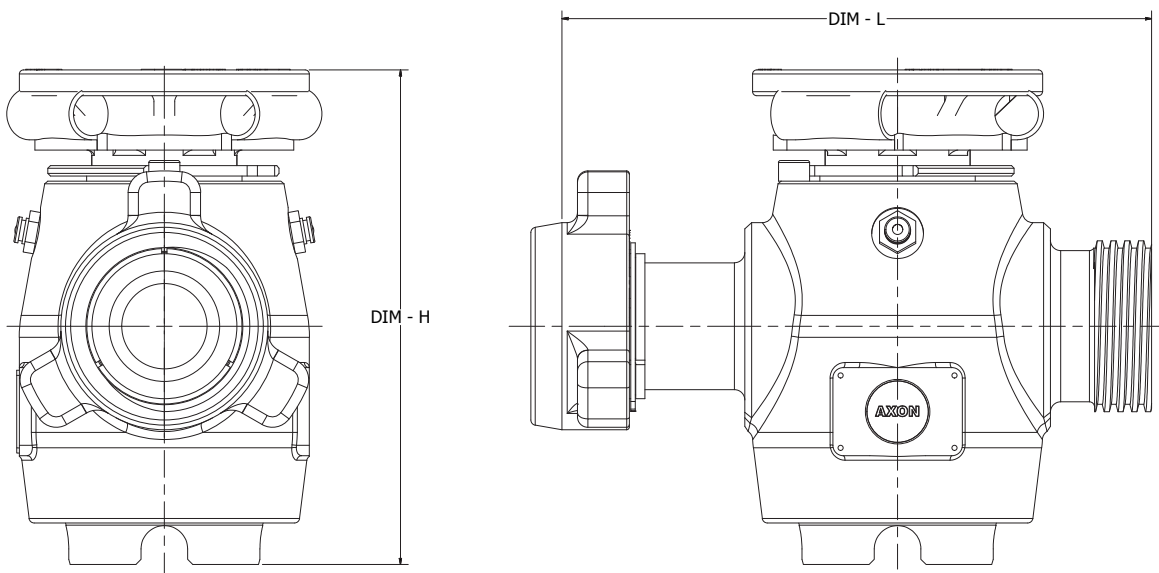
### Design Advantages

- Lubricated, tapered seal, quarter-turn valve results in rapid full open or close operation
- Tapered valve cavity ensures uniform seating of the sealing inserts and provides a reliable seal at the full range of pressure
- Engineered to provide low operating torque and resistance to tough abrasive and corrosive conditions
- Grease point\* allows grease to flow between inserts and grease the plug
  - \*See Great Point Diagram on following page for more information
- Plug and inserts located on the adjusting nut to allow precise location of the plug, seat, and body
- Raised area around seal acts as a bearing surface to the body
- Hexagonal shaft accommodates handle, actuator or gearbox
- Key insert and body designed to prevent rotation
- Valve seals can be removed without removal from the line
- Hydraulic actuators available upon request

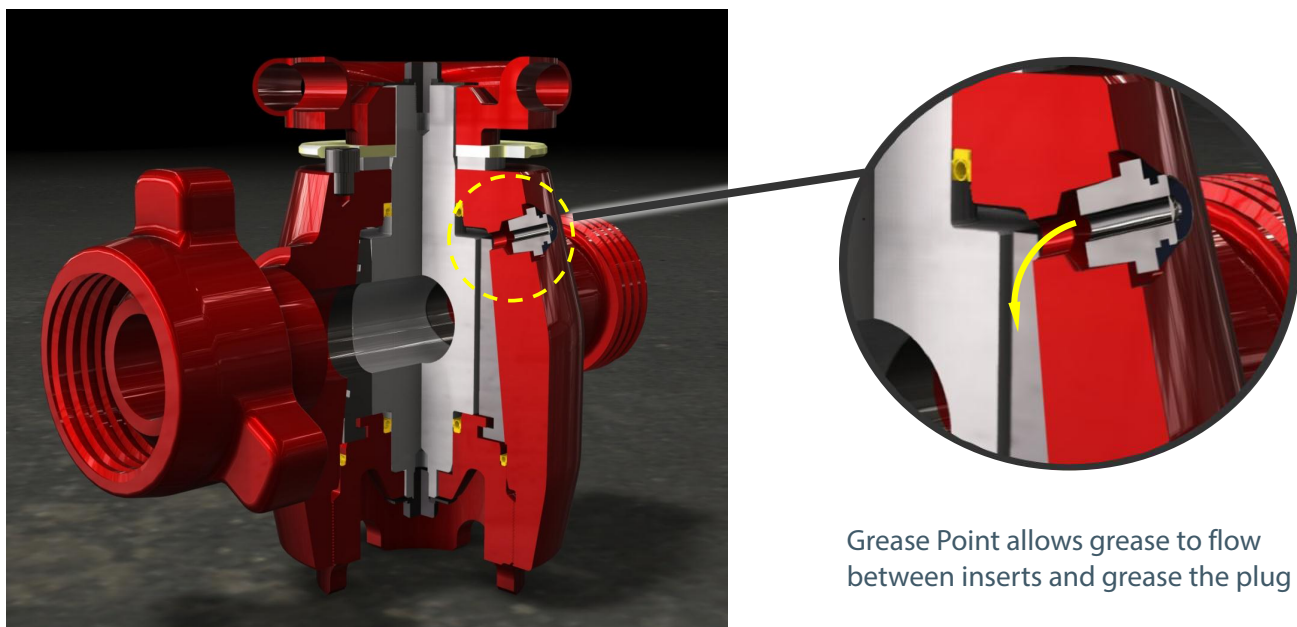
# Plugmaster™ Plug Valve

## SPECIFICATIONS

Plug Valve Type	Pressure	Bore	Service	DIM - H	DIM - L	Weight
2" Fig 1502, M/F	15,000 psi	2.06 in	Standard	11.50 in	13.88 in	103 lb
2" Fig 1502, M/F	10,000 psi	2.06 in	H <sub>2</sub> S	11.50 in	13.88 in	103 lb
3" Fig 1502, M/F	15,000 psi	2.75 in	Standard	13.38 in	17.00 in	220 lb
3" Fig 1502, M/F	10,000 psi	2.75 in	H <sub>2</sub> S	13.38 in	17.00 in	220 lb
4" Fig 1502, M/F	15,000 psi	3.06 in	Standard	13.38 in	19.50 in	264 lb
4" Fig 1502, M/F	10,000 psi	3.06 in	H <sub>2</sub> S	13.38 in	19.50 in	264 lb



## Grease Point Diagram



Grease Point allows grease to flow between inserts and grease the plug