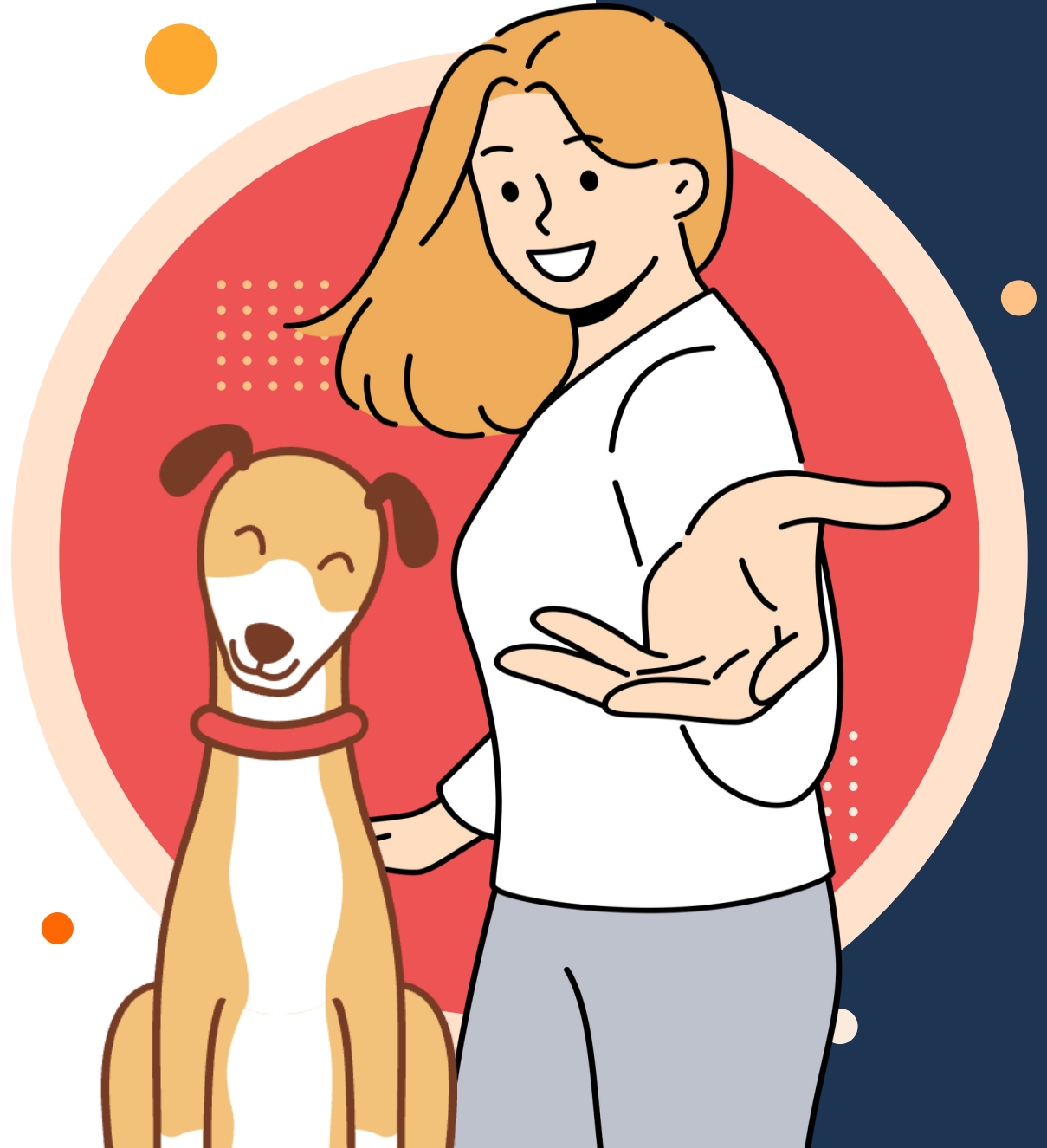


# Safety Training

*for Volunteers*

Get Started





Hey there, I'm **Sadie**, and  
this is my buddy, **Gizmo**.

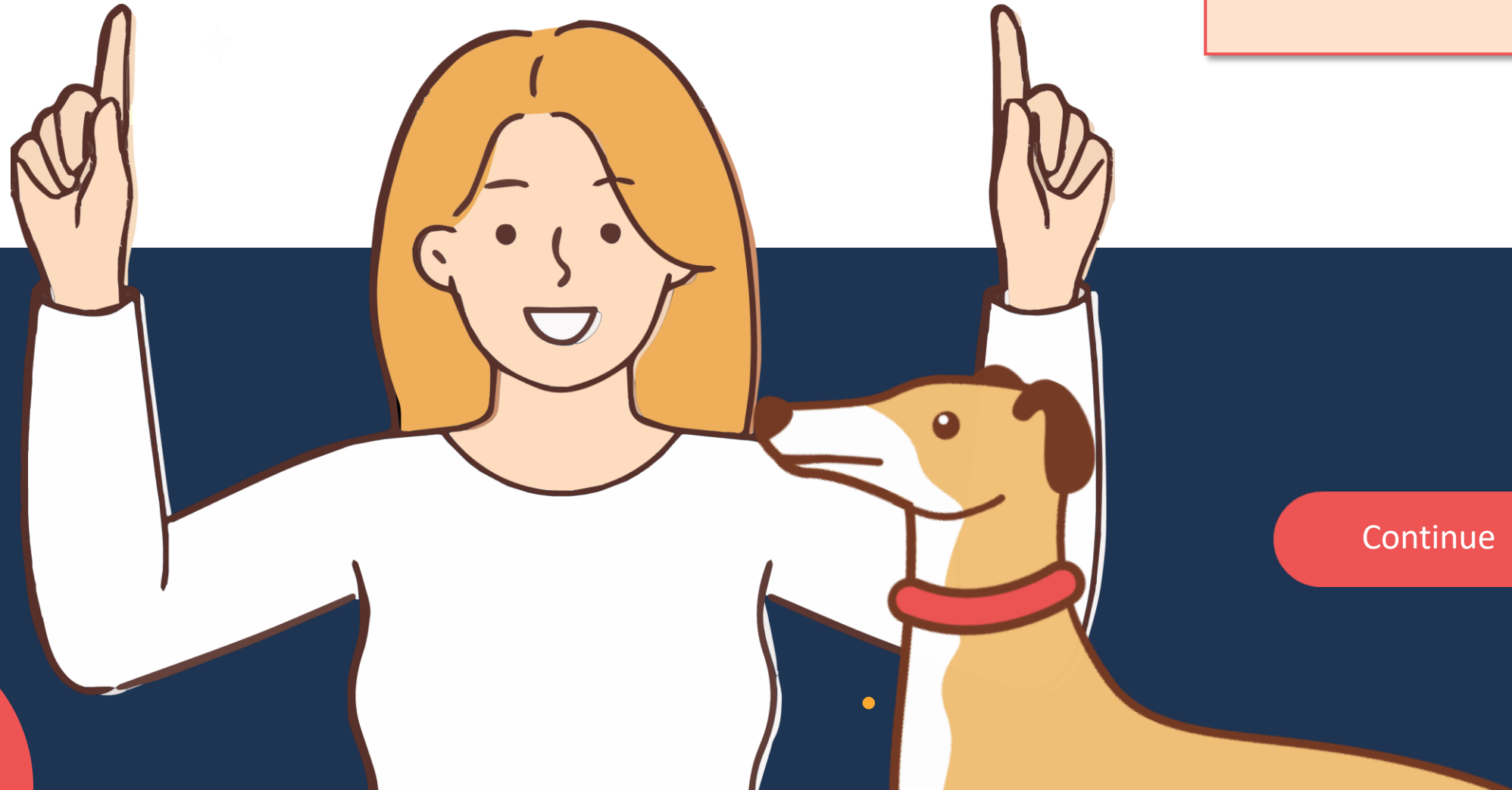
Welcome to Retired Racers!  
Our goal is to find loving homes  
for hounds.

**That's where you come in!**  
We rely on volunteers like you  
to help care for these pups.

Continue

**Turnout** = *Fresh air*  
*Potty breaks*  
*Playtime*

**3 times a day**  
**EVERY DAY**



Continue

Sighthounds  
are Special!



- Strong, sweet, and sensitive
- Hunt by sight and speed
- Many breeds, including Greyhounds, Whippets, Italian greyhounds, Irish Wolfhounds, Borzois and Salukis
- Greyhounds are bred with scent hounds to make hunters called “Lurchers”
- Greyhounds have universal blood type and are used as blood donors

Continue

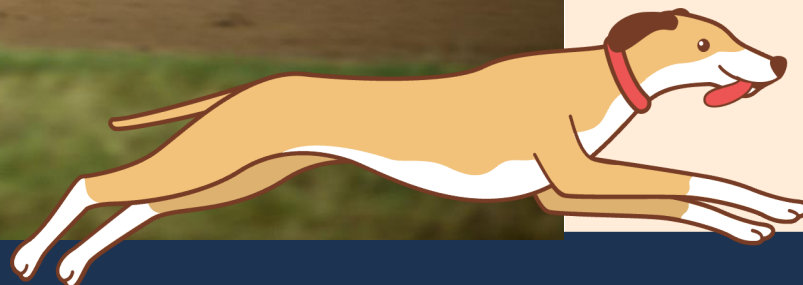
# Speed and Safety



Our greyhound racers come from tracks in the **United Kingdom, Ireland, and Australia** since most of the U.S. tracks have closed.

Racers are trained to **spot and chase movement**, so they must always be **leashed or fenced**.

They **wear muzzles** while running because they nip at each other's **thin and delicate skin**.

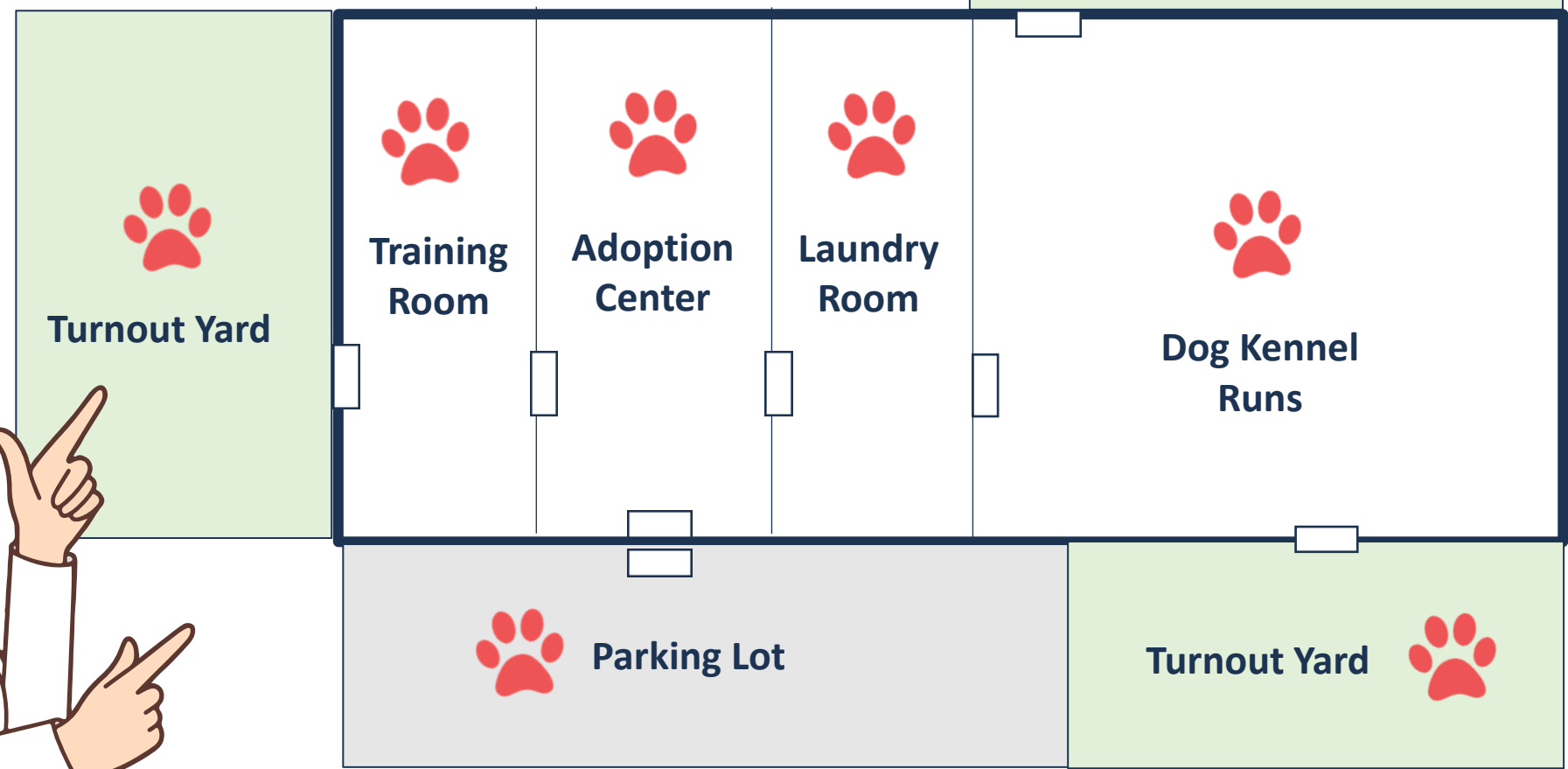
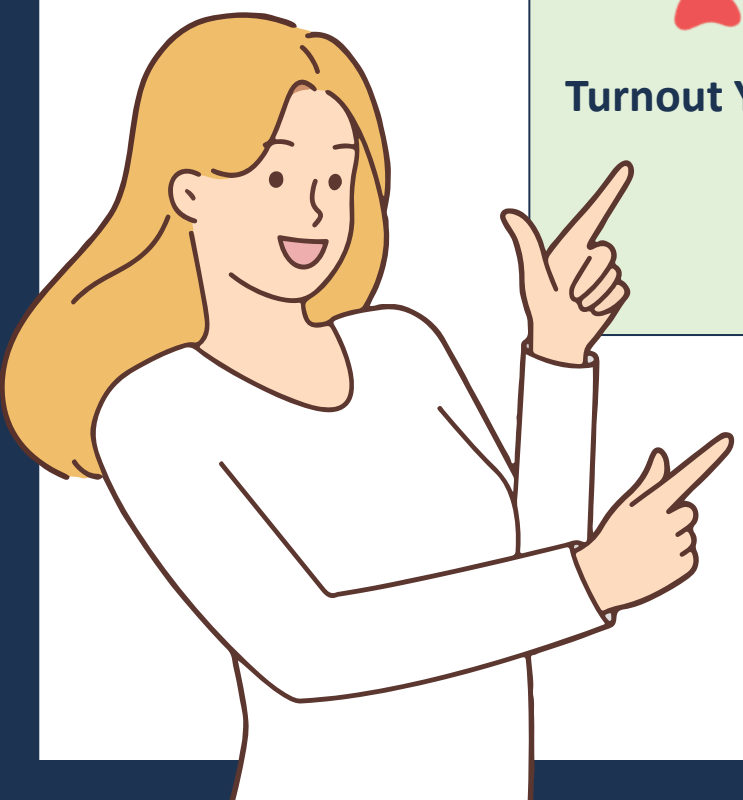


Continue



# Safety First

*Click on each paw to learn more.*



Continue

Continue



# Parking Lot

**Lock your car** and don't leave valuables inside. This is a high car prowler area. We're located off a busy highway, so it's critical to **keep building doors shut and dogs leashed** so they don't zoom out into the road.

[Back](#)





# Turnout Yards

**Close the door!** When you are out in the yard with dogs, make sure the door to the building is securely closed.

**Maximum capacity:** 3 dogs in a yard a time.  
1 dog needs 1 volunteer. 2 or 3 dogs need 2 volunteers.

[Back](#)





## DO



Watch the dogs closely



If dogs get tense, give a quick spray with the water bottle and a sharp “Hey!” or “Stop it!”



If a fight starts, blast dogs in the face with the hose or use the broom to break them up.



Immediately return the dog in conflict to an empty run.



Tell an employee right away about any fighting.

# Yard Safety

## DON'T



Don't use your phone except for emergencies. The dogs need your full attention.



Don't use the restroom until after you return the dog to its run.



Don't use your hands to break up fighting dogs. Collars and muzzles could come off and you could get hurt!



Don't give treats in the yards. Dogs may fight over them.

Back





# Training Room

When you are out in the yard with dogs, make sure the door to the building is securely closed.

[Back](#)



# Adoption Center Entry

The entryway has two doors. Close the first door completely before opening the second door. That way, in case a dog gets loose, it can't escape.

[Back](#)



# Adoption Center

*Our “living room” where hounds meet  
their new families.*

*Click on each paw to learn more.*



Continue

Continue



# Paws Off the Furniture

No dogs on the Adoption Center furniture. We don't know if future owners want dogs on the couch, so we don't want to create bad habits.

[Back](#)



# Adoption Center Playtime

Only **one dog at a time** allowed in the center  
for playtime after turnout.

[Back](#)





# Laundry Room:

Be careful of wet floors after bathing dogs.  
Do not run the industrial laundry machines  
without employee direction and supervision.

[Back](#)





## **Dog Kennel Runs:**

This is where the hounds live. Keep the doors to these rooms shut. Enter quietly. No visitors allowed here during turnout times.

[Back](#)

*Click on **each letter** to see what it stands for.*

**H O U N D**

*Safety Protocol  
Let's get started!*



Continue

*Click on **each letter** to see what it stands for.*



H stands for **HOME SAFE HOME**. Our kennel is home to these hounds. Every dog has its own **RUN**. They live in their runs over 23 hours a day.



Continue

# SAFETY in the RUNS

## Do



Enter the run quickly and get the dog



Exit with the dog right away



Securely latch the run gate

## Don't



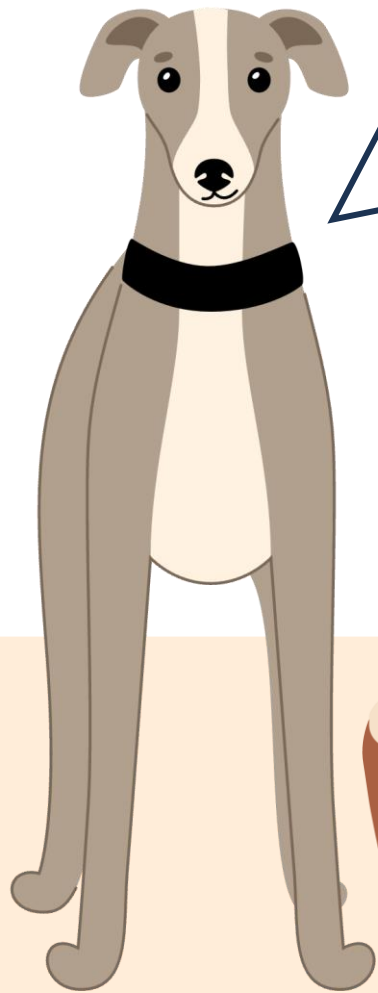
Hang out in the run with the dog



Sit on the dog's bed or the floor

Continue





**G'DAY! I'm Tilly** from Australia!  
Welcome to my new home.  
Will you **click and move me and  
my belongings into my RUN?** I like  
my privacy, so exit when you're  
done. **Please lock my gate.**



Continue

Continue

*Click on **each letter** to see what it stands for.*



O stands for “**Observe Details.**” You’ll need to get to know the hounds that you’re assigned to turn out. Reading each dog’s **kennel card** and observing the details is the best way to keep us and the hounds safe.

Continue



Observe the details on Tilly's Kennel card. In the "Notes" section, hover over two specific directions for Tilly's turnout.

Tilly



Name: TILLY  
Breed: Greyhound

DOB: Mar 11, 2019  
Country: Australia

Sex: F  
Tag No: 2834

**Weight:** 58 lbs

**Color:** Brindle

**Vaccines:** Current

**Food:** 1.5 c, moistened. fish oil

**Allergies:** None

**Health / Injuries:**

Healthy.

Current broken toe, front left foot.  
See notes.

**Temperament :**

Sweet, gentle. Walks well on the leash. Loves playing with toys.

**TURNOUT NOTES:**

No turnout to large yard until toe fully heals.

Tilly will drink water excessively. She loves water. DO NOT let her continue drinking in the turnout yard. Engage her to play and move her away from the water buckets.

Continue

Continue





Observe the details on Joey's Kennel card.

In the "Notes" section, hover over the direction for Joey's turnout.

Joey



Name: Joey  
Breed: Borzoi

DOB: June 5, 2021  
Country: USA

Sex: M  
Tag No: 3609

**Weight:** 90 lbs

**Color:** Red-brown and white

**Vaccines:** Current

**Food:** 2 c, moistened. Fish Oil

**Allergies:** None

**Health / Injuries:**

Healthy

**Temperament:**

Friendly, fun, big boy. Active and eager to please. Walks well on the leash. Loves playing with toys—see notes.

**TURNOUT NOTES:**

Joey is obsessed with playing with balls. NO balls in the turnout yard with Joey or he won't take a break to go potty. He will also get wound up and have a hard time settling down.

Continue

Continue

*Click on **each** letter to see what it stands for.*

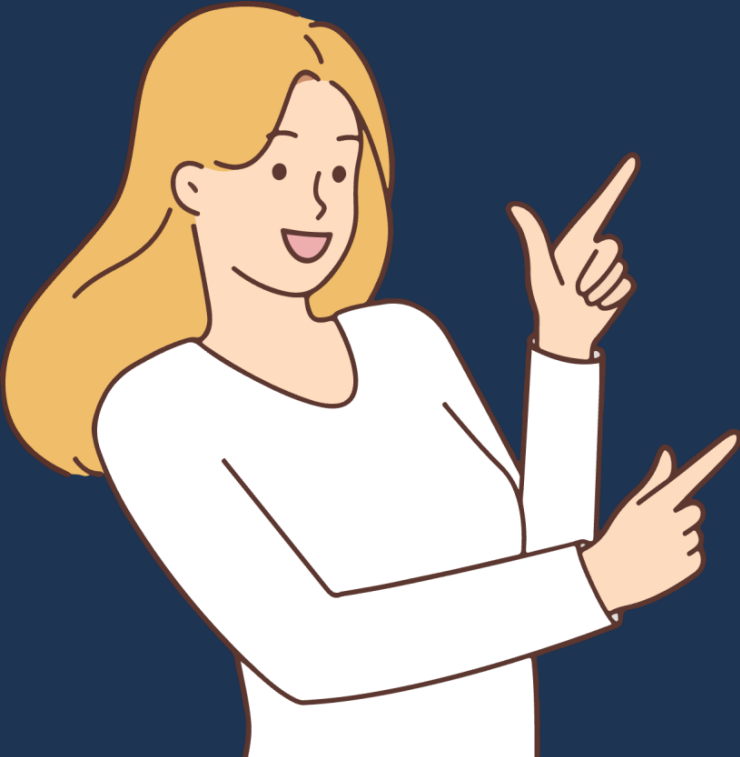
H

O

U

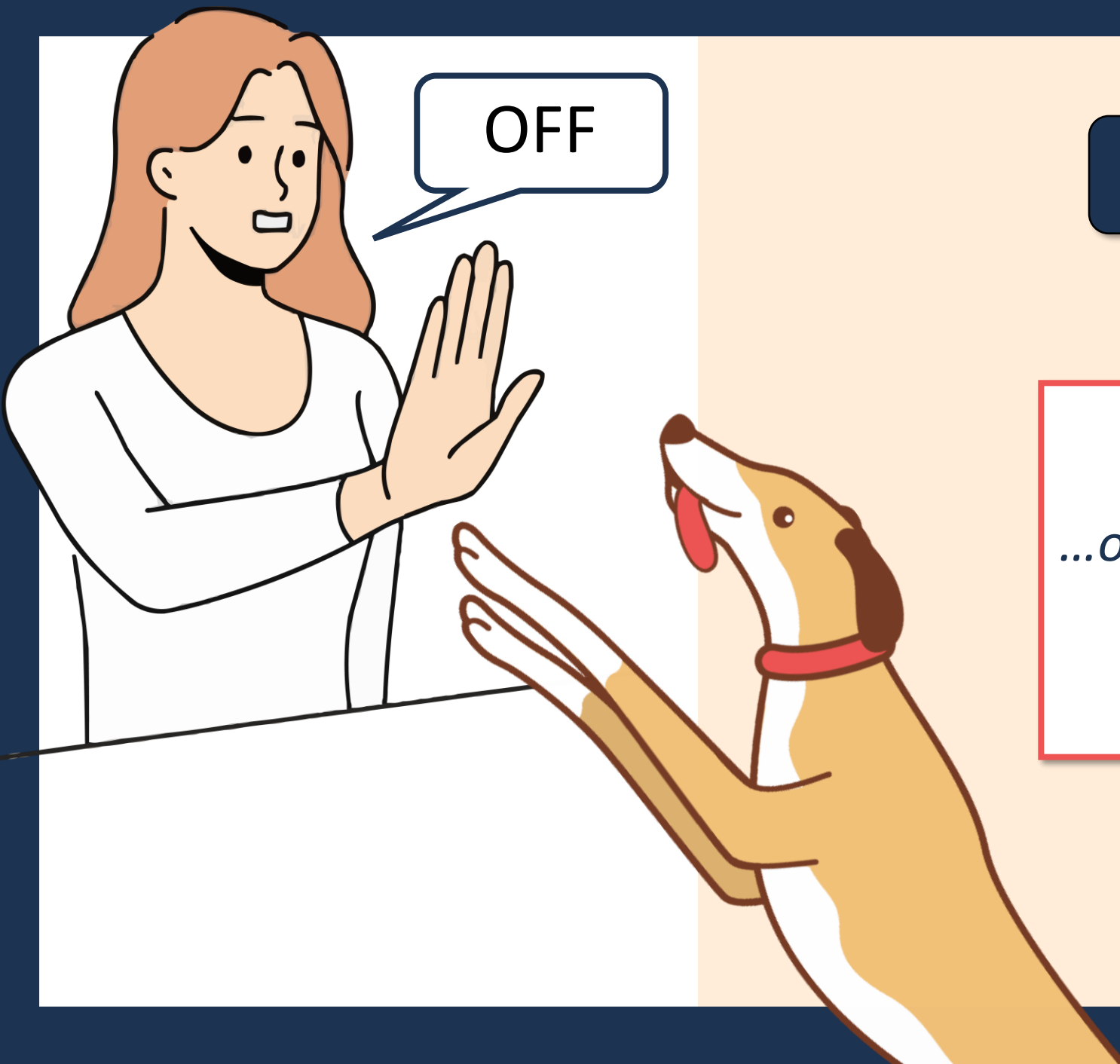
N

D



U stands for “**Use Consistent Commands.**” When we all use **OFF** and **WAIT** correctly, the dogs learn what to do, and everyone stays safe. You’ll practice using commands during your in-person training.

Continue



OFF

## When to use "OFF"

**OFF = GET OFF**

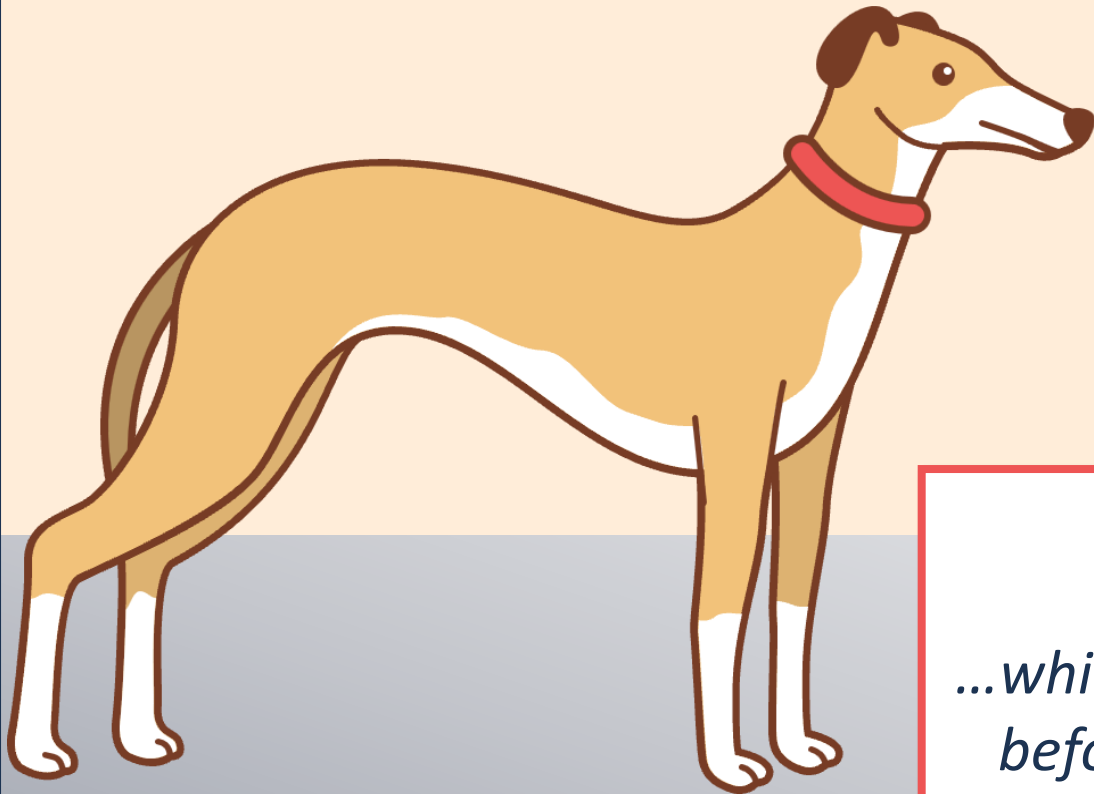
*...off people, doors, furniture*

**OFF ≠ DOWN**

**DOWN = LIE DOWN**

Continue

## When to use “WAIT”



WAIT



**WAIT**

*...while we leash and muzzle,  
before we go through the  
gate or door*

Continue

*Click on **each letter** to see what it stands for.*

H

O

U

N

D



N stands for “**Navigate Safely.**” As a turnout volunteer, you will navigate dogs safely **from their kennel runs to the yards and back.**

Continue



# Safely navigate Tilly to the yard

*Which items do you need?  
Move each item to YES or NO*



YES

NO

Continue

Continue

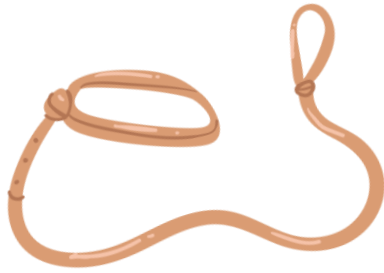


# Muzzle

**Yes,** our dogs wear muzzles during turnout. Muzzles protect dogs and people during rambunctious play.

[Back](#)





# Slip Leash

**Yes,** always use a slip leash to walk the dog to the yard.

Back



# Collar

**Yes,** all our dogs wear collars 24/7.

In addition to using the slip leash, you can hold a dog by the collar if the dog is very strong or wiggly.

[Back](#)



# No treats in the yards

Give treats to the dogs **AFTER** turnout when they are **back in their runs**.

[Back](#)



# No retractable leashes

These are **dangerous**! Never use them.  
You will not find these at our facility.

[Back](#)



## No Distractions

Your focus is on navigating the dogs safely.  
You need your hands free. Enjoy your coffee  
AFTER your turnout shift.

[Back](#)

*Click on each letter to review.*

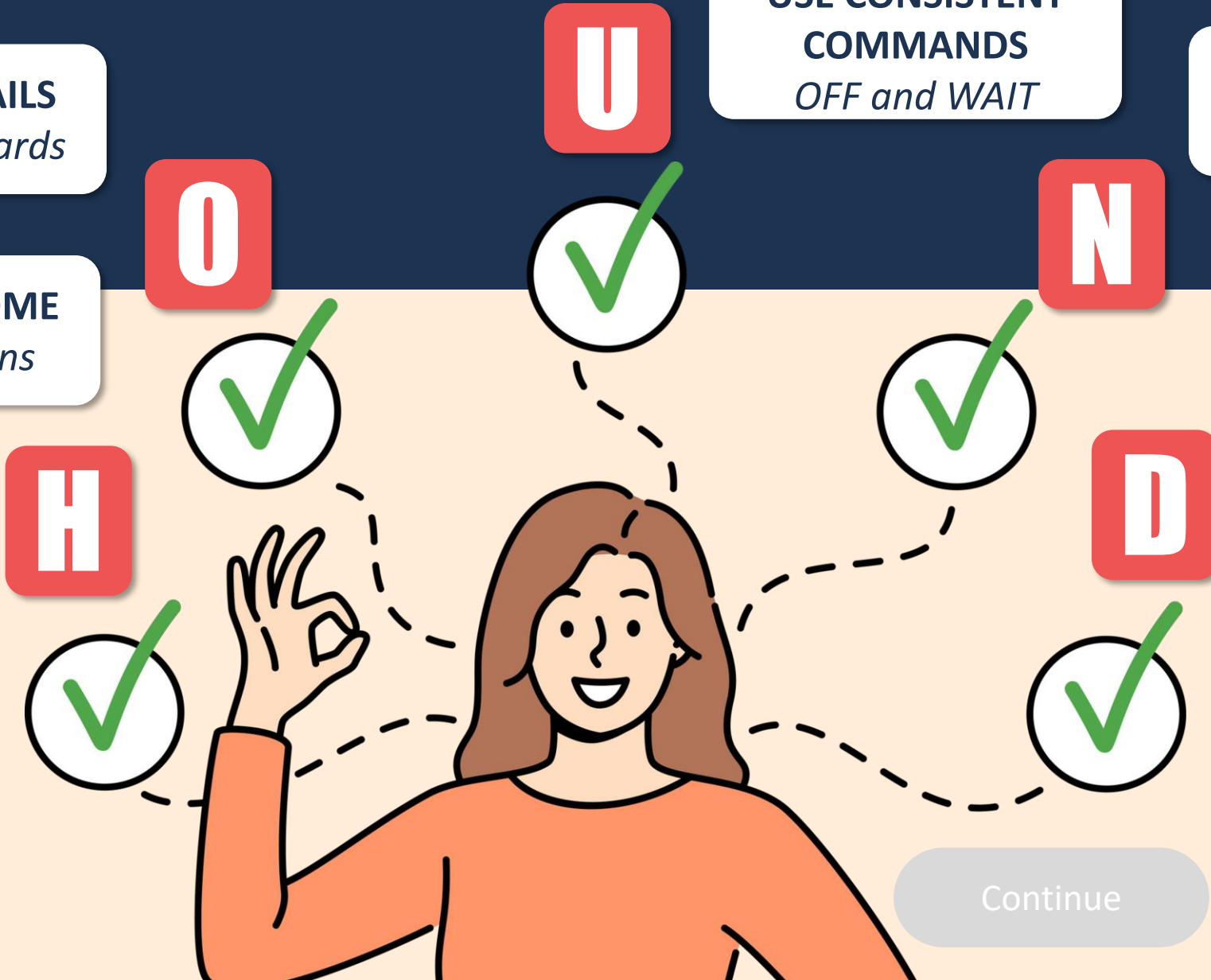
**OBSERVE DETAILS**  
*on the kennel cards*

**HOME SAFE HOME**  
*Respect the runs*

**USE CONSISTENT  
COMMANDS**  
*OFF and WAIT*

**NAVIGATE SAFELY**  
*Use muzzles, slip  
leashes, and collars*

**DON'T HESITATE  
TO ASK FOR HELP**  
*Always ask an  
employee*



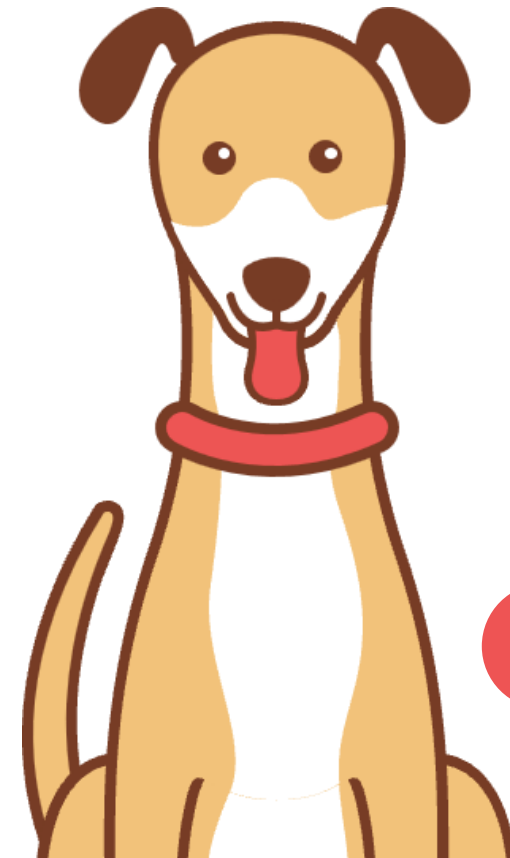
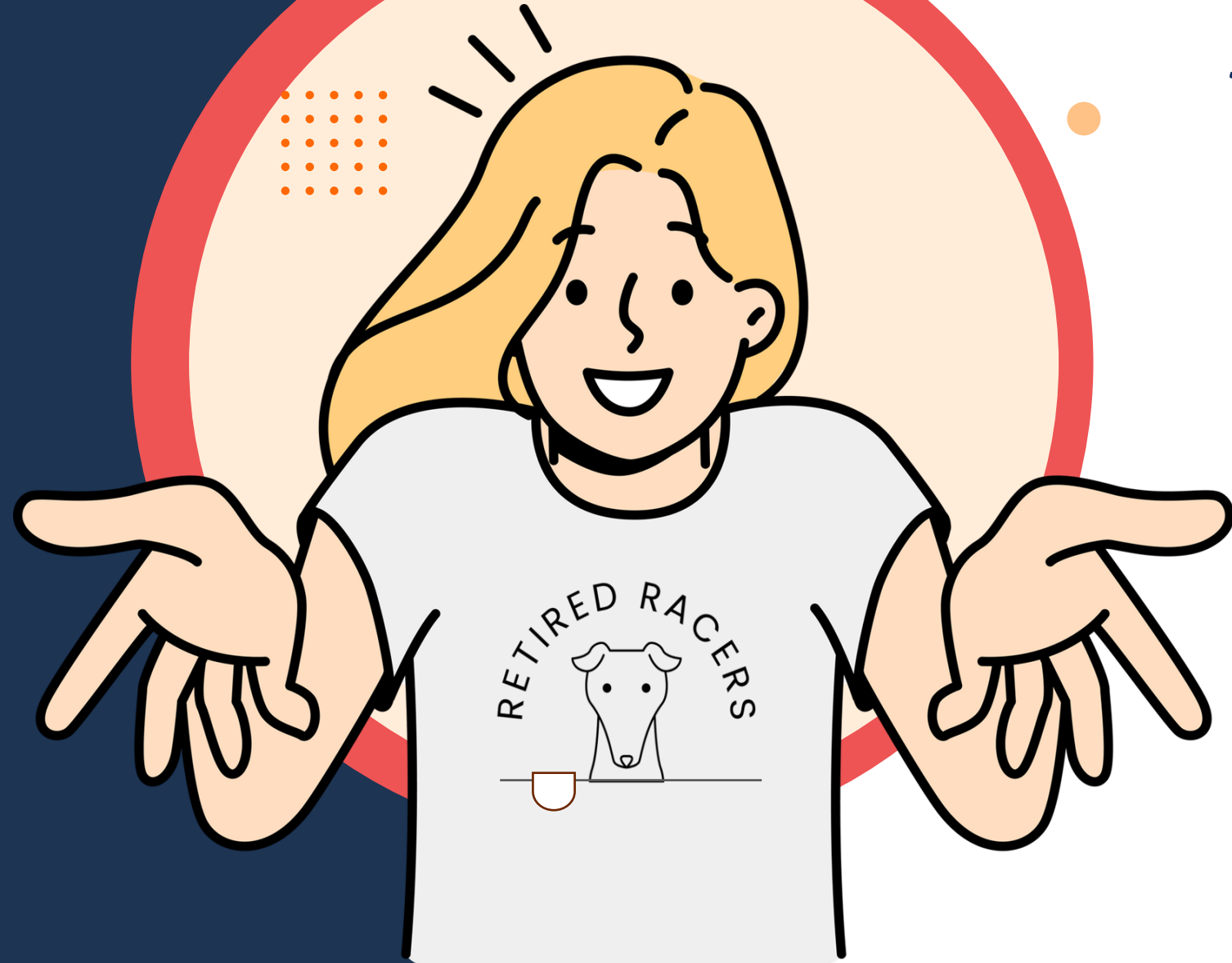
Continue

Continue

# Safety Training

*for volunteers*

## Complete!



Exit