



## D-3 STUDY GUIDE

---

### HORSE MANAGEMENT EXPECTATIONS

*The candidate should be able to demonstrate simple skills without assistance, and to discuss care of the mount, using common horse terms.*

---

*The use of the 2012 USPC D Manual of Horsemanship, 2<sup>nd</sup> Edition is required in order to complete this study guide.*

---

### PRESENTATION/TURNOUT/TACK

---

- *Rider in safe and neat attire, in accordance with the Standards of Proficiency (SOP).*
- *Mount to be well brushed (no sweat), clean (no dirt), with feet picked out, showing farrier care. Mane and tail brushed and eyes, nose, lips, and dock wiped off.*
- *Tack to be safe, especially stitching on stirrups/girth, and clean. No jockeys or dust, stress points clean, stirrup pads (if used) clean, and bit clean. All tack must be properly adjusted.*
- *Groom and tack up independently*
- *Describe the bit your mount is wearing and its adjustment.*
- *Describe 4 ways to correctly fit your mount's bridle so it is safe and comfortable for your mount.*

**What are some behaviors your mount may show if the bit is not fitted properly?**

- 1.
- 2.
- 3.



© 2023 The United States Pony Clubs, Inc.  
4041 Iron Works Parkway, Lexington, KY 4051  
(859)254-7669 ~ [www.ponyclub.org](http://www.ponyclub.org)

Copying permitted for internal use only by members and volunteers of  
The United States Pony Clubs, Inc.

---

## LEADING & LONGEING

---

- *Lead safely from both sides at the walk.*
- *Demonstrate correctly jogging a mount in a bridle and turning in the correct direction which is away from you. (Whip may be carried and, if necessary, used to move mount forward.)*

---

## BANDAGING

---

- *Describe the 5 critical areas protected by shipping bandages or boots.*
  - 1.
  - 2.
  - 3.
  - 4.
  - 5.
- *Describe the area a stable bandage covers and what materials are used.*
  - 1.
  - 2.
- *Under direct supervision, apply a protective boot and 1 bell boot to a mount's leg and 1 polo wrap to a front leg with assistance, if needed.*

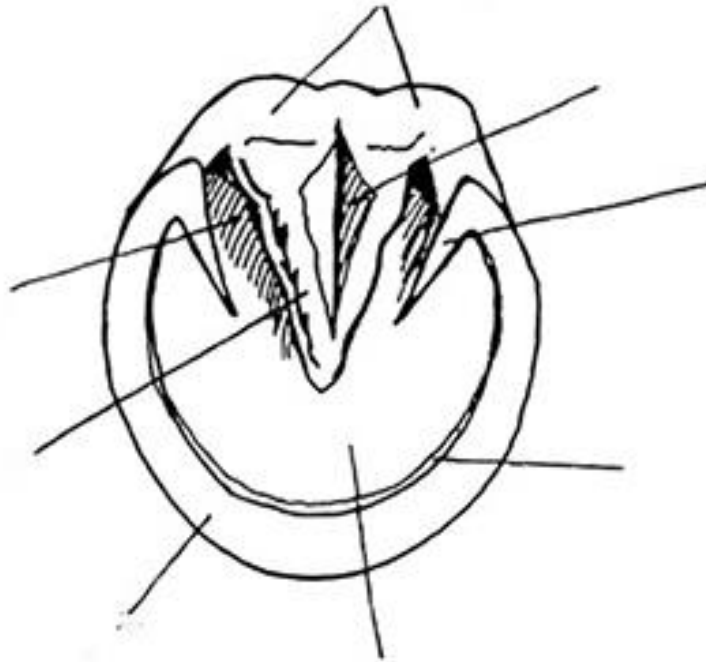
---

## FOOT & SHOEING

---

- *Name 3 parts of the hoof.*

**Label the diagram below**



- *Describe 3 obvious signs of a foot needing shoeing or trimming.*

1.

2.

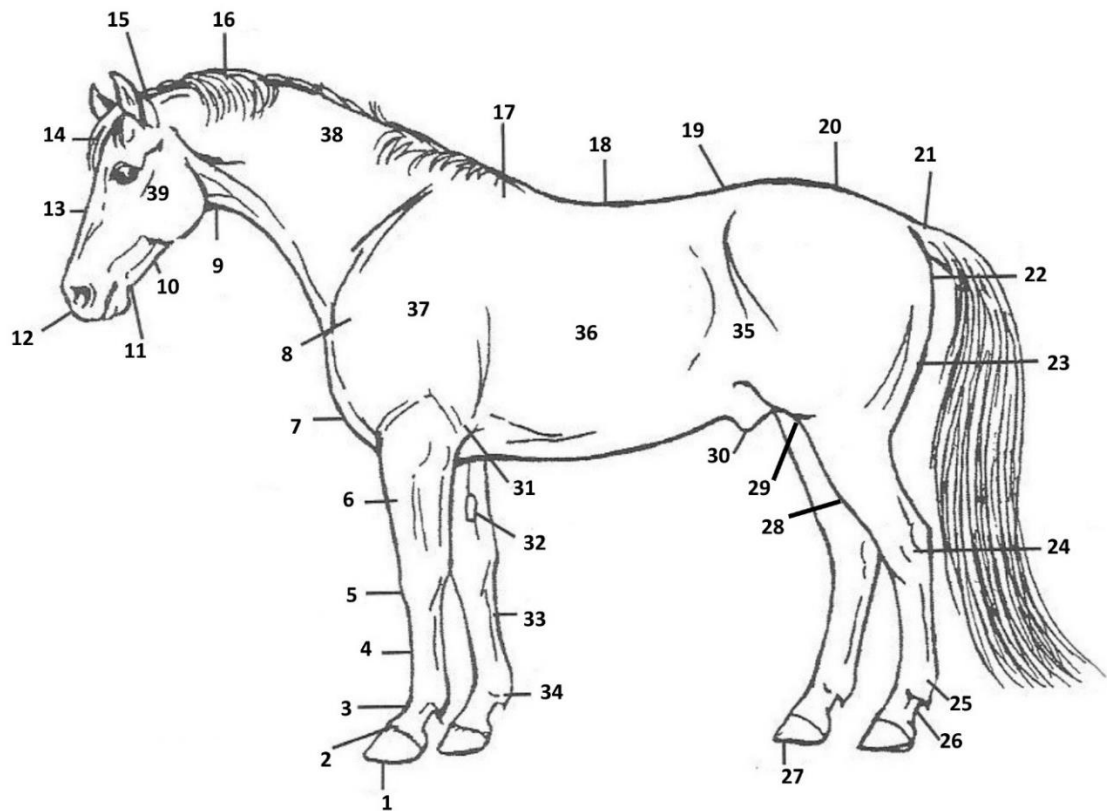
3.

---

## BREEDS, PONY PARTS, CONFORMATION

---

- *Locate and name 20 parts of the mount.*



- |     |     |     |
|-----|-----|-----|
| 1.  | 14. | 27. |
| 2.  | 15. | 28. |
| 3.  | 16. | 29. |
| 4.  | 17. | 30. |
| 5.  | 18. | 31. |
| 6.  | 19. | 32. |
| 7.  | 20. | 33. |
| 8.  | 21. | 34. |
| 9.  | 22. | 35. |
| 10. | 23. | 36. |
| 11. | 24. | 37. |
| 12. | 25. | 38. |
| 13. | 26. | 39. |

- Name 10 equine breeds.

Can you name any specific pony or draft breeds as well?

1.

2.

3.

4.

5.

6.

7.

8.

9.

10.

.

- *Know 1 common conformation fault for each of the following: head, neck, shoulder, back, and pasterns.*

**Conformation faults of the neck:**

1.

2.

**Conformation faults of the back:**

1.

2.

**Conformation faults of the shoulder:**

1.

2.

**Conformation faults of the head:**

1.

2.

### Conformation faults of the pasterns:

- 1.
  - 2.
- *Describe the eyes' location and how this affects the mount's vision.*

---

### HEALTH AND MAINTENANCE RECORD BOOK

---

- *Provide a hard copy (in a folder/binder) of mount's Health and Maintenance Record Book that contains records for at least 3 months prior to the test. In addition to the information from the D-2 record book, records must contain:*
  - *Dated list of routine care (vaccinations, deworming, shoeing, and dentistry.)*
  - *Daily schedule of care which may include grooming, riding, and clinics, etc.*

### Share your record book with your Pony Club instructor

---

### STABLE MANAGEMENT

---

- *Discuss steps and reasons for cleaning a stall*
  - 1.
  - 2.
  - 3.
  - 4.
  - 5.
  - 6.
- *Demonstrate and discuss the proper methods of hanging a water bucket and hay net/hay bag at proper height for your mount, either in a trailer or in a stall.*

### How high should the bucket be hung in the stall?

## TRAVEL SAFETY

---

- *Name rules for riding safely on public roads.*

1.

2.

3.

4.

- *Describe the proper steps to load and unload a mount.*

**Steps for loading a horse in the trailer:**

1.

2.

3.

4.

5.

**Steps for unloading a horse from the trailer:**

1.

2.

3.

4.

5.

---

## NUTRITION

---

- *Know 5 basic rules of feeding.*

1.

2.

3.

4.

5.

6.

7.

- *Describe how feeds are measured and weighed.*
- *Discuss the amount of roughage and the amount of concentrates per ration for own mount.*

Write down your mount's feeding schedule below:

	AM	Noon	PM
<b>Roughage</b>			
<b>Concentrate</b>			
<b>Supplement</b>			



---

## CONDITIONING

---

- *Describe care of mount after strenuous work, to include cooling out, checking legs, watering, and feeding.*

- *Describe two indications a mount may not be fit enough for the work asked of him/her.*

1.

2.

- *Know vital signs of mount at rest and what TPR stands for.*

T- at rest = \_\_\_\_\_

P- at rest = \_\_\_\_\_

R- at rest = \_\_\_\_\_

**What is the reason that we need TPR taken at rest?**

---

## LAND CONSERVATION

---

- *Name 3 important rules when riding across privately owned land.*

1.

2.

3.

4.

---

## HEALTH CARE & VETERINARY KNOWLEDGE

---

- *Name 3 symptoms of a sick or injured mount that would cause you to seek help.*

1.

2.

3.

- *Name 3 diseases your horse can be vaccinated against.*

1.

2.

3.

4.

---

## TEACHING

---

- *Describe how you assisted at 1 unmounted Pony Club activity.*

---

## RIDER SAFETY

---

- *Name 2 items of rider equipment that are required to ride in a Pony Club mounted lesson.*

**1.**

**2.**

- *Give 2 examples of when a riding helmet needs replacing.*

**1.**

**2.**