

Dirac Machine Tool LLC

Technology For The Modern World

Product Lines

+GF+

**ABSOLUTE
MACHINE TOOLS**

 **NexGenCAM**

 **acieta**

 **HARDINGE**

MIKRON 5AXIS
Agie Charmilles
EDM
Laser Texturing
Consumables
System 3R

Johnford
QuickTech
Nexturn Swiss
Tongtai
Seiki

Powermill
Esprit
Feature Cam
Fusion 360
CamPlete

FANUC Robot
Collaborative
Custom
Automation
Co-bot
Material
Handling

Hardinge/Bridgeport
Kellenberger/OTW
Hauser/Jones
Shipman
Weisser/WPT

starrag

 **HEXAGON**

DynaPath 

KENT

 **QUASER**
Group

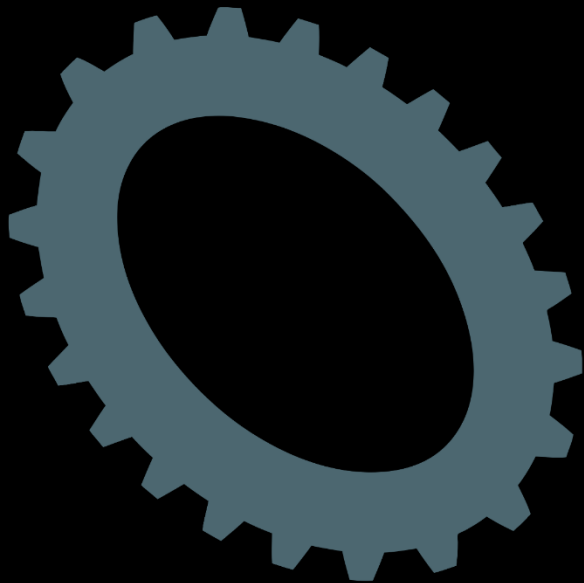
Bumotec
Droop+Rein
Heckert
Dorries
Ecospeed

CMM
3D laser Scanner
2D laser Scanner
Measuring Arms
Optical CMM

Tool Room Mills
Conversational
Teach Lathes
Enclosed Machines
Easy to operate

Surface Grinders
Bridge Grinders
Automatic
Manual

Machine Builder
5 axis
3 Pallet changer
4 axis Horizontal
Private label



Direc Machine Tool

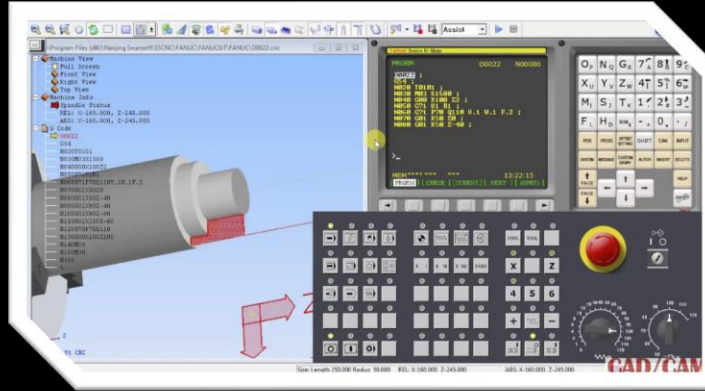
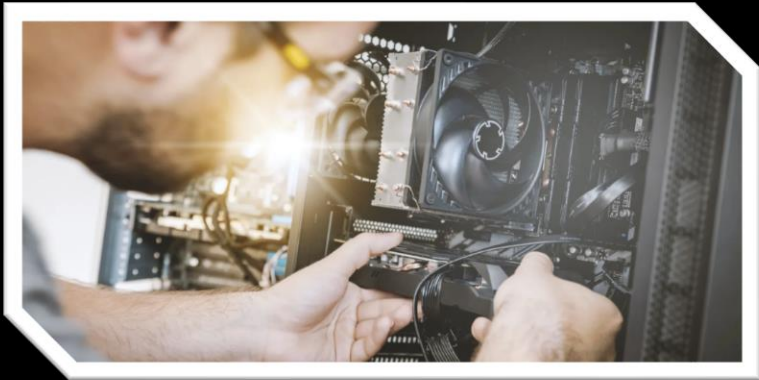
Direcmachinetool.com

Machine Tool Service

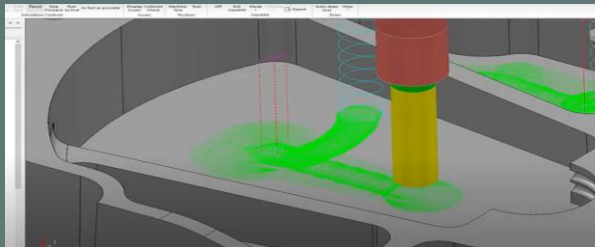
- CNC service (any brand)
 - PM programs
 - Plant Moves
- Industrial Maintenance
- No trip charge (within 2hr of Waukesha office)
 - \$120hr rate

Contact: Joe Trost
service@direcmachinetool.com
Cell: 920-905-3737

Additional Service Partners Offered:



Robot Integration
CNC repair and PM service
Knowledge of all types of machine tools.
Headquarters in Franklin WI



Contract Programming 5axis,3axis
Machine Tool Consulting
Turn-Key Solutions
Contract Designing
CNC training- PRINT TO PART



Financing "One" Page App
Lease Options With Buy Out
Payment Skips
Bumper To Bumper Warranty
For length Of Lease



Direc Machine Tool Solutions

GF MACHINING SOLUTIONS

AGIE CHARMILLES WIRE / SINKER EDM
MIKRON 3 AND 5 AXIS MACHINES

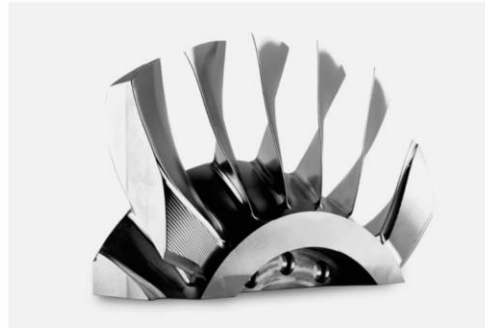
LASER TEXTURING

MICRO LASER

SYSTEM 3R TOOLING AND AUTOMATION

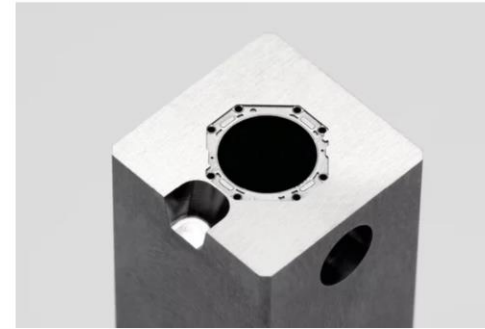
EDM CONSUMABLES

EDM HOLE DRILLING



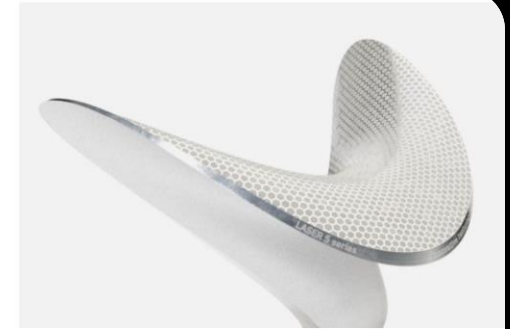
Milling

3 axis - 5 axis



EDM

Die sinking - Wire cutting - Hole drilling



Laser technologies

Laser texturing - Micromachining



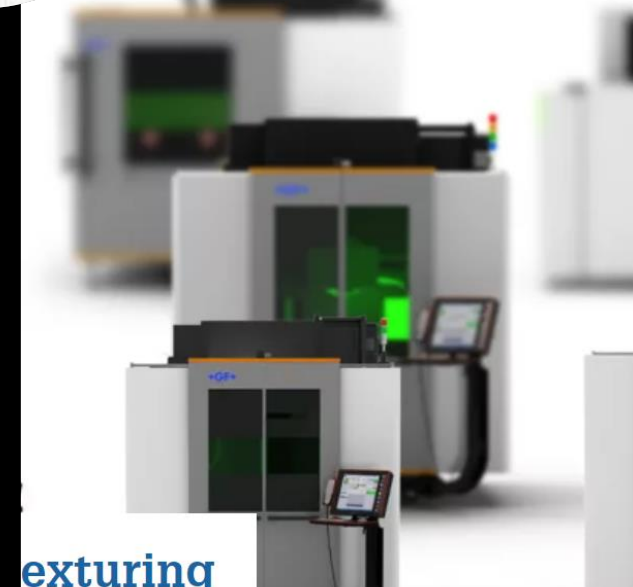
Vertical milling



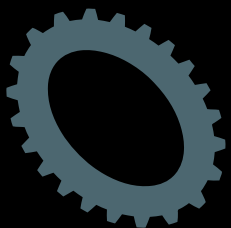
Machine solutions for industries



Machining Solutions



Laser texturing



Direc Machine Tool
Direcmachinetool.com

EDM CONSUMABLES

- PREMIUM EDM WIRE, FILTERS, DI TANKS, AND RESIN SOCKS.

*In stock and available
for local delivery !*

CALL
FOR A
QUOTE
TODAY!!

CONSUMABLES@DIRECMACHINETOOL.COM

(262) 606-4924



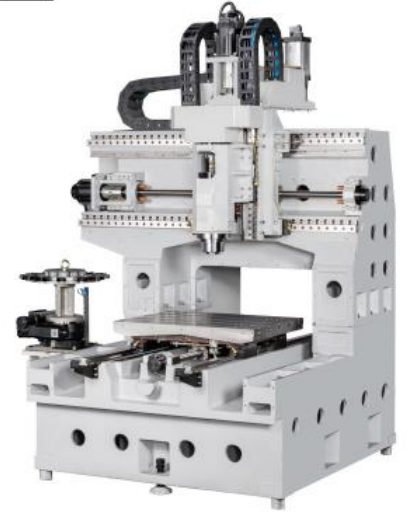
DynaPath



Flat Bed Lathes

- **2x USB ports**
- **1x LAN** for networking and file transfer
- **Standard G/M-Code** support
- **Touchscreen LCD** for intuitive operation
- **8GB SSD** file storage
- **DRO + Semi-Auto Mode** for basic operation
- **Conversational Programming + DXF Import** for shop floor programming
- **Standard G/M-Code** for running direct CAD/CAM posts
- **Advanced motion control** for high speed, high precision machining

Frame



MILL CENTERS



HIGH SPEED MILLS



GRAPHITE MILLS



CNC Control Systems

Knee Mills





- **Hardinge** is the leading global provider of advanced, high precision metal-cutting machine tool solutions and aftermarket tooling and accessories. With over 125 years of experience, the company has been on the forefront of innovation with a full spectrum of CNC turning, milling and grinding machines.

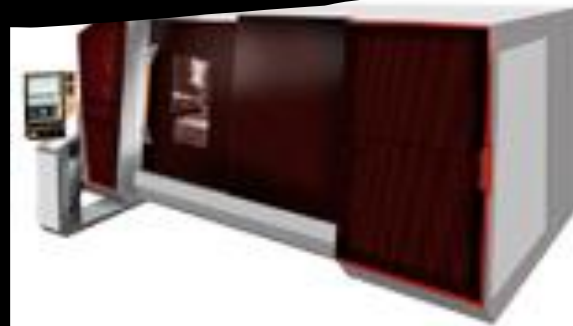
**MADE IN THE
USA**



MILLING



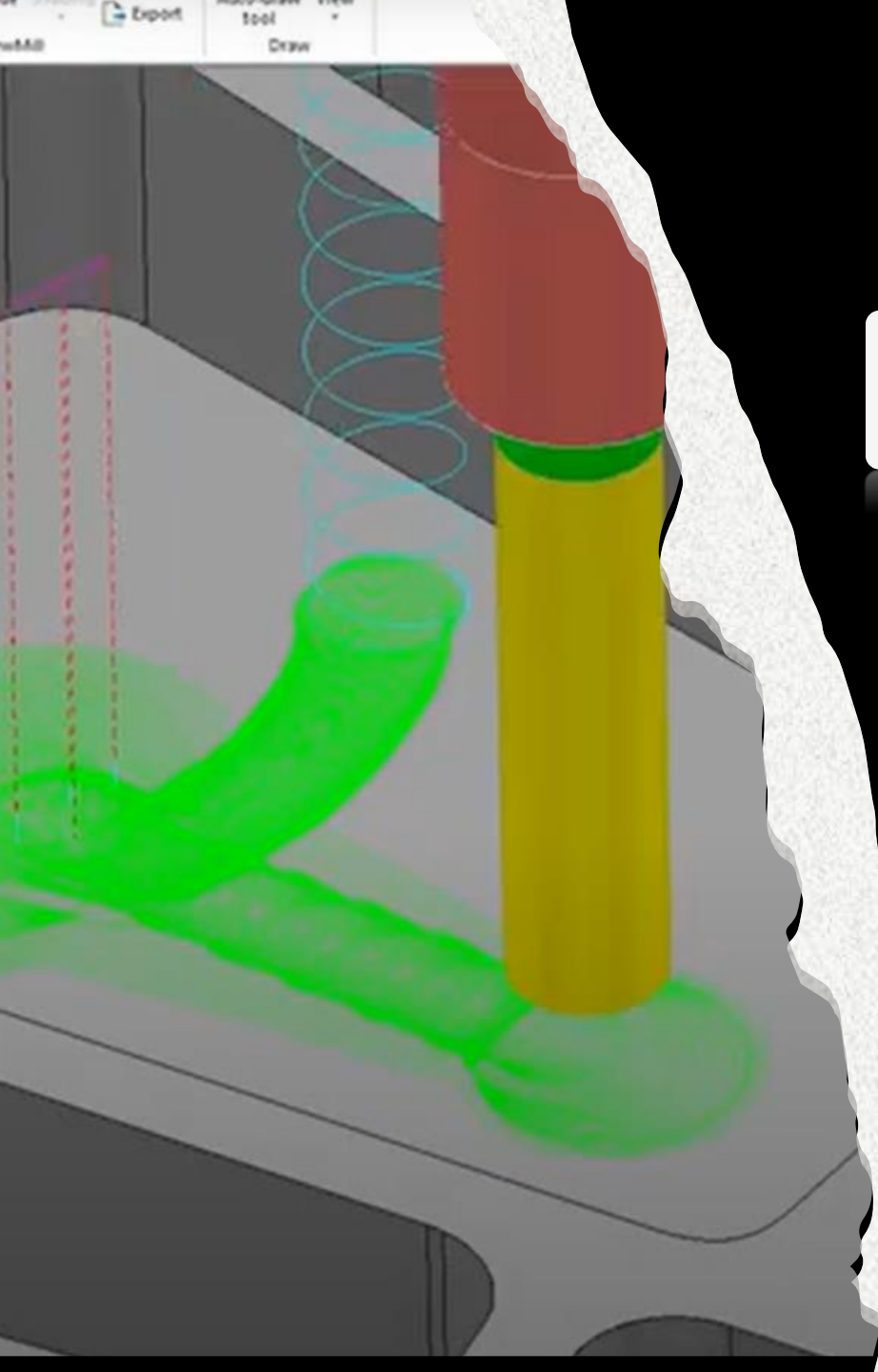
GRINDING



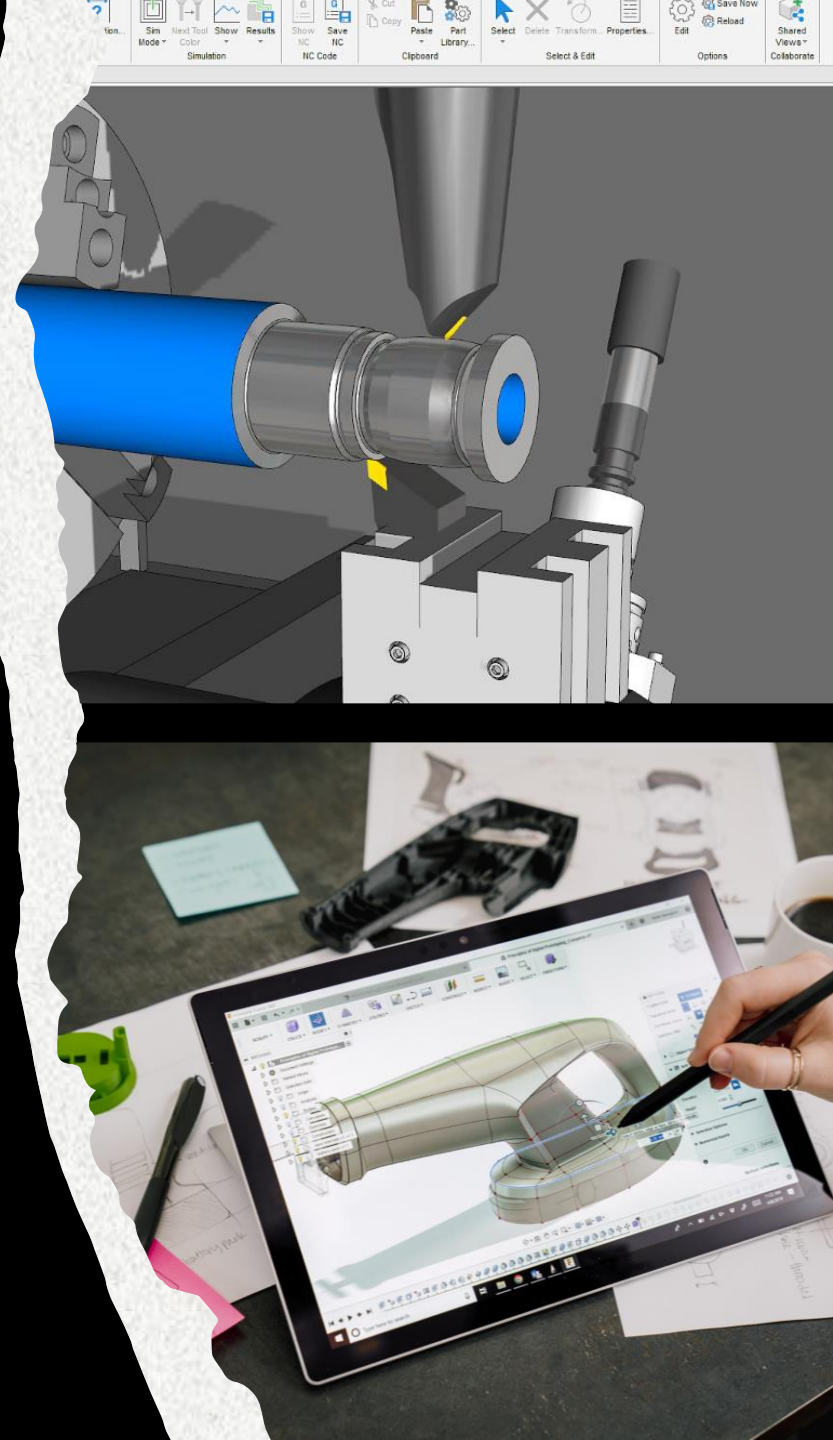
MULTIFUNCTIONAL



TURNING



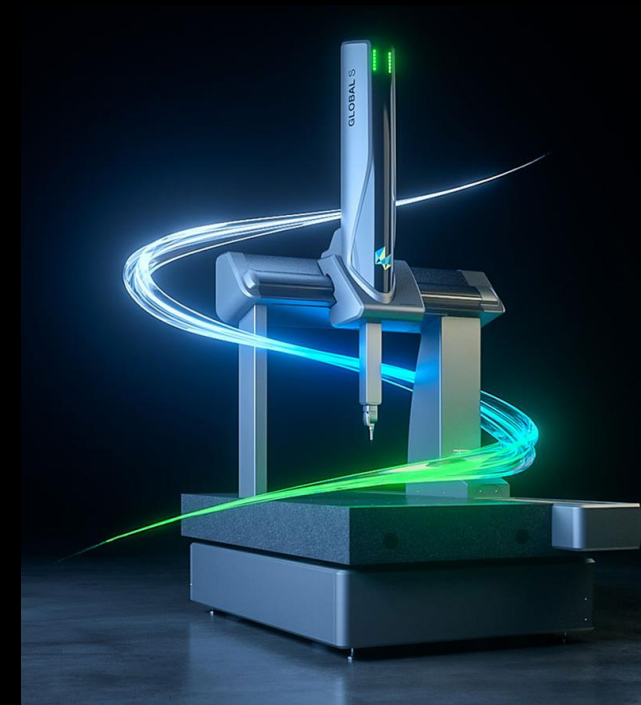
- CAM SOFTWARE/SIMULATION
- POWERMILL
- FEATURECAM
- PARTMAKER
- FUSION 360
- CAMplete
- NETFABB
- POWERSHAPE
- POWERINSPECT





HEXAGON

- 2D scanners
- 3D laser scanners
- Coordinate Measuring Machines
- Industrial theodolites
- Laser trackers
- Machine calibration and optimisation
- Machine tool measurement
- Micrometers, calipers and gauges
- Photogrammetry
- Portable measuring arms
- Robotics and automation
- Structured light scanners

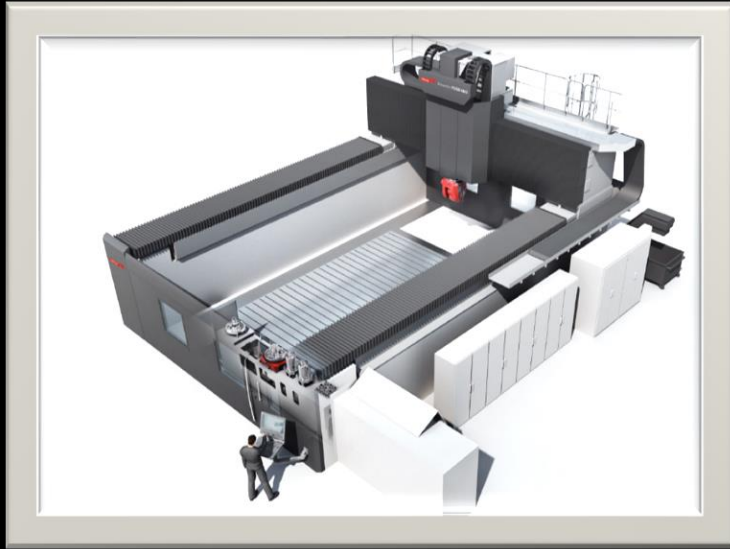


Precision Hand Gages and CMM Styli



Hard Gaging





starrag

EXPERTS IN AEROSPACE
OIL/GAS
TRANSPORTATION
MULTI TASKING GUN SLIDES

SWISS/GERMAN TECHNOLOGY

95% UPTIME GAURENTEE!

- **BUMOTEC** 5 axis Mill turn
- **DROOP-REIN** Large Gantry machines
- **HECKERT** 3 and 5 Axis Horizontal Machines
- **ECOSPEED** World record holder in chip removal
- **SIP** Most accurate machine on the planet



*Taiwan Private Label
For Matsura, Hardinge and
many other Builders

*Large Capacity Vertical
Pallet changer.
Horizontals
5 axis
Factory Direct Pricing





Since 1983, the Acieta team has installed more than 5,000 robotic systems throughout North America, leading the charge in the robot integration industry.



**INDUSTRIAL
AUTOMATION
EXPERTS**





**ABSOLUTE
MACHINE TOOLS**

JOHNFORD –LATHE, BRIDGE MILL
NEXTURN – SWISS LATHE
QUICKTECH- LARGER SWISS TYPE LATHE
SEIKI - DRILL TAP MACHINE
TONGTAI- HORIZONTAL, LATHE FORMER
HITACHI SEIKI
YOU JI – LARGE VTL





EDM HOLE DRILLER EXTRA LARGE CAPACITY

| Specifications | Titan Force 30 | Titan Force 60 | Titan Force 1200 | Titan Force 4042 | Titan Force 6053 |
|-------------------------|-------------------------|-------------------------|-----------------------------------|-----------------------------------|-----------------------------------|
| "X" Axis Travel | 16.0 (400 mm) | 24.0" (610 mm) | 53.0" (1350 mm) | 40.0" (1016 mm) | 60.0" (15 24 mm) |
| "Y" Axis Travel | 12.0 (250 mm) | 16.0" (400 mm) | 16.0" (400 mm) | 42.0" (1066 mm) | 53.0" (1346 mm) |
| "Z" Axis Travel | 16.0" (400 mm) | 16.0" (400 mm) | 16.0" (400 mm) | 30.0" (760 mm) | 30.0" (760 mm) |
| "W" Axis Travel | 16.0" (400 mm) | 16.0" (400 mm) | 16.0" (400 mm) | 30.0" (760 mm) | 30.0" (760 mm) |
| Height of Workpiece | 17.75" (450mm) | 17.75" (450mm) | 17.75" (450mm) | 40.0" (1016 mm) | 40.0" (1016 mm) |
| Max Length of Electrode | 16.0" (400mm) | 16.0" (400mm) | 16.0" (400mm) | 24.0" (600 mm) | 24.0" (600 mm) |
| Machine Weight | 4900 lbs (2400kg) | 5100 lbs (2400kg) | 7500 lbs (3400kg) | 6740 lbs (3060 kg) | 6740 lbs (3060 kg) |
| Weight Capacity | 1100lbs (500kg) | 1100lbs (500kg) | 1900lbs (860) | 3000 lbs (1363kg) | 3000 lbs (1363kg) |
| Machine Footprint | 65 in x 69 in x 78.7 in | 65 in x 69 in x 78.7 in | 65 in x 103 in x 78.7 in | 114 in x 83 in x 98 in | 114 in x 83 in x 98 in |
| Tooling System | Stainless Steel Rails | Stainless Steel Rails | Precision granite with M8 inserts | Precision granite with M8 inserts | Precision granite with M8 inserts |
| Peak Amperage | 70 Amps | 70 Amps | 70 Amps | 70 Amps | 70 Amps |
| Electrode Capacity | .004 - .256" | .004 - .256" | .004 - .256" | .004 - .256" | .004 - .256" |
| Country of Origin | USA | USA | USA | USA | USA |
| AEC | 20 | 20 | 20 | 20 | 20 |
| AGC | 4-8 | 4-8 | 4-8 | 4-12 | 4-12 |



- MILLING TOOL HOLERS



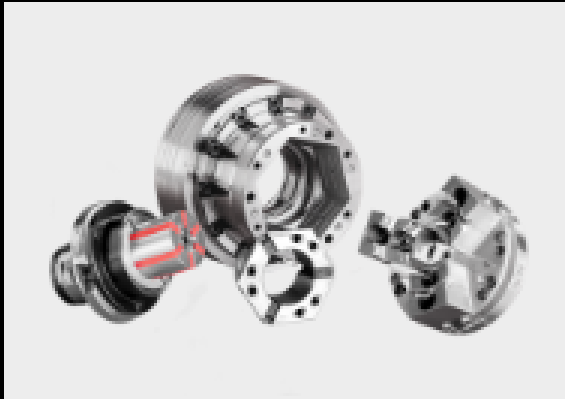
- Tooling certificates available for other brands not listed.

• CUTTING TOOLS, TAPS & INDEXABLE CUTTING INSERTS



• WORKHOLDING LINES





• TOOLING AND WORKHOLDING FOR TURNING APPLICATIONS



Stamping Consumables



- Std. and Custom Die Sets | Die Components | Gas Springs | Die Springs | Punches | Buttons | Retainers

