

## CSA WEEKLY SHARES

**Our CSA has 20 weekly shares for most markets**, starting the 2nd week of June through the end of October. Large Share: Retail Value \$625, pay by April 1ST for a **discounted price of \$500**. **The price will be \$550 if paid by June 8th**

Small share is still a weekly pick up for a smaller family. Retail price \$325, pay by April 1st for a **discounted price of \$285**, **the price will be \$310, if you join by June 8th** **The Pittsfield, Tecumseh and Canton markets** have a shorter season and the price will be prorated to reflect the number of weeks. If you join during the season you will only be charged for the remaining weeks of the program. Your shares will be in our "Kapnick Crates"; it is your responsibility to swap your crate out every week. We will bag your share if you forget your crate.

**If you are unable to pick up your weekly share, 48hrs notice is required.**

If you let us know we will provide you a \$30 or \$15 credit to make up for your missed share. Failing to notify us will forfeit your share that week. No cash refunds will be issued.

Growing fruits in Michigan can be challenging with current weather patterns. We reserve the right to substitute different fruits or add more vegetables if needed. We feel with our diverse fruit plantings that we will be able to provide a great selection all season long.

NAME: \_\_\_\_\_  
PHONE: \_\_\_\_\_  
EMAIL: \_\_\_\_\_  
Vacation Dates: \_\_\_\_\_

## HISTORY OF KAPNICK ORCHARDS

Kapnick Orchards is a family farm operated in Britton MI. 4 miles south of Tecumseh and 30 miles from Ann Arbor. It is currently owned and operated by Bruce & Sharon Kapnick Shaffer & Scott Robertello. Kapnick's was established by Robert & Gertrude Kapnick in the late 1930's.

## OUR PEST MANAGEMENT PRACTICES

We are not an organic farm but we are very conscious of our environment and our growing practices. We practice I.P.M. (Integrated Pest management) which means we do not spray on a once a week schedule. We only spray when there will be significant injury to our crops. We use computer programs from Michigan State to determine the best time to spray to control a large group of pests at once to limit our applications. We are licensed by the MDA.

# KAPNICK ORCHARDS



# 2020 C.S.A.

COMMUNITY SUPPORTED AGRICULTURE

## COORDINATOR

Scott Robertello  
**517.673.6927**  
Kapnicks@tc3net.com

4245 Rogers Highway  
Britton, MI 49229

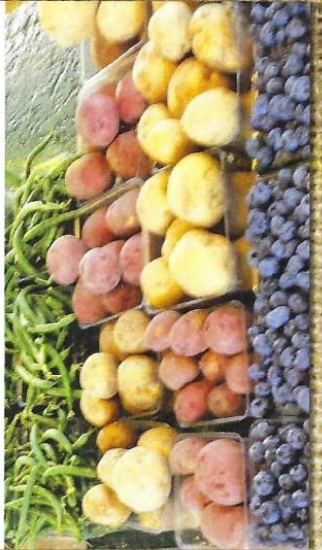
FARM PHONE  
**517.423.7419**

# CIRCLE PICK UP LOCATION AT THE FOLLOWING FARMERS MARKETS

You can choose only 1 location

- **Kapnick Orchards**  
4245 Rogers Hwy. Britton  
T, W, TH, F, S, SUN
- **Wednesday**  
Ann Arbor Farmers Market 7-3pm or  
Chelsea 1-5pm  
Ann Arbor City Hall
- **Thursday**  
Northville 8-2 or Pittsfield 2-6pm  
- Closes for season on 9/24
- **Saturday**  
Ann Arbor 7-3  
Chelsea 8-1  
Tecumseh 9-1  
- Closes for season 10/3
- **Sundays**  
Canton 9-1  
- Closes for season 10/4

- 🍏 **CASH**    🍏 **CREDIT CARD**
- 🍏 **CHECK**    /    / 2020
- 🍏 **LARGE SHARE**    🍏 **SMALL SHARE**



# LARGE SHARE

- |  |   |  |   |
|--|---|--|---|
| <p>Week 1<br/><b>JUNE 9TH</b><br/>2 LB ASPARAGUS<br/>4 QTS STRAWBERRIES</p> <p>Week 2<br/><b>JUNE 16TH</b><br/>4 QTS STRAWBERRIES<br/>1 QT SUGAR SNAP PEAS</p> <p>Week 3<br/><b>JUNE 23RD</b><br/>4 QTS STRAWBERRIES<br/>1 QT SUGAR SNAP PEAS<br/>1 CONTAINER OF OUR<br/>HOMEMADE NUT BUTTER</p> <p>Week 4<br/><b>JUNE 30TH</b><br/>2 QTS SWEET CHERRIES<br/>1 QT STRAWBERRIES<br/>2 QTS NEW POTATOES</p> <p>Week 5<br/><b>JULY 7TH</b><br/>2 QTS SWEET CHERRIES<br/>1 PT BLACK RASPBERRIES<br/>1 QT STRAWBERRIES</p> <p>Week 6<br/><b>JULY 14TH</b><br/>2 QTS TART CHERRIES<br/>2 QTS SWEET CHERRIES<br/>1 QT BLUEBERRIES</p> | <p>Week 7<br/><b>JULY 21ST</b><br/>1 QT SWEET CHERRIES<br/>2 QTS BLUEBERRIES<br/>2 QTS GREEN BEANS<br/>1 QT PEACHES</p> <p>Week 8<br/><b>JULY 28TH</b><br/>2 QTS BLUEBERRIES<br/>2 QTS PEACHES<br/>1 QT PLUMS</p> <p>Week 9<br/><b>AUGUST 4TH</b><br/>2 QTS BLUEBERRIES<br/>2 QTS PEACHES<br/>1 QT PLUMS</p> <p>Week 10<br/><b>AUGUST 11TH</b><br/>MAKE YOUR OWN CSA!<br/>\$30 CREDIT TO PICK OUT<br/>ANYTHING YOU WANT</p> <p>Week 11<br/><b>AUGUST 18TH</b><br/>1 PECK PEACHES<br/>1 QT BLUEBERRIES<br/>1 QT NECTARINE</p> <p>Week 12<br/><b>AUGUST 25TH</b><br/>½ PECK PEACHES<br/>1 QT NECTARINES<br/>½ PECK APPLES</p> | <p>Week 13<br/><b>SEPTEMBER 1ST</b><br/>½ PECK PEACHES<br/>1 QT NECTARINES<br/>2 QTS APPLES<br/>2 QTS SEEDLESS GRAPES</p> <p>Week 14<br/><b>SEPTEMBER 8TH</b><br/>1 QT PEACHES<br/>1 QT PEARS<br/>1 PECK APPLES<br/>1 QT NECTARINES<br/>1 PT RASPBERRIES</p> <p>Week 15<br/><b>SEPTEMBER 15TH</b><br/>1 GALLON CIDER<br/>½ PECK APPLES<br/>2 QTS SEEDLESS GRAPES<br/>1 QT PRUNE PLUMS</p> <p>Week 16<br/><b>SEPTEMBER 22ND</b><br/>½ PECK HONEY CRISP<br/>APPLES<br/>1 QT PEARS<br/>1 GALLON CIDER<br/>1 QT PRUNE PLUMS</p> <p>Week 17<br/><b>SEPTEMBER 29TH</b><br/>1 PECK APPLES<br/>1 QT PRUNE PLUMS<br/>1 GALLON CIDER<br/>1 PT HOMEMADE<br/>APPLEBUTTER</p> | <p>Week of<br/><b>OCTOBER 6TH</b><br/>NO SHARES DUE TO OUR<br/>42ND APPLE FESTIVAL<br/>THE 10TH &amp; 11TH</p> <p>Week 18<br/><b>OCTOBER 13TH</b><br/>MAKE YOUR OWN CSA!<br/>\$30 CREDIT TO PICK OUT<br/>ANYTHING YOU WANT</p> <p>Week 19<br/><b>OCTOBER 20TH</b><br/>1 PECK OF APPLES<br/>1 GALLON CIDER<br/>2 WINTER SQUASH<br/>1 QT PEARS</p> <p>Week 20<br/><b>OCTOBER 27TH</b><br/>2 WINTER SQUASH<br/>1 GALLON CIDER<br/>1 QT PEARS<br/>½ PECK HONEY CRISP<br/>1 CONTAINER OF OUR<br/>HOMEMADE NUT BUTTER</p> |
|--|---|--|---|

Small share  
schedule will be  
emailed to you.  
Share has similar  
items just less  
quantity.

