

# Chase 6

## TROPHYLITE

### 6066

Get both race trucks to the start line and stay with them until the start of the race. Keep them hydrated, motivated and happy.

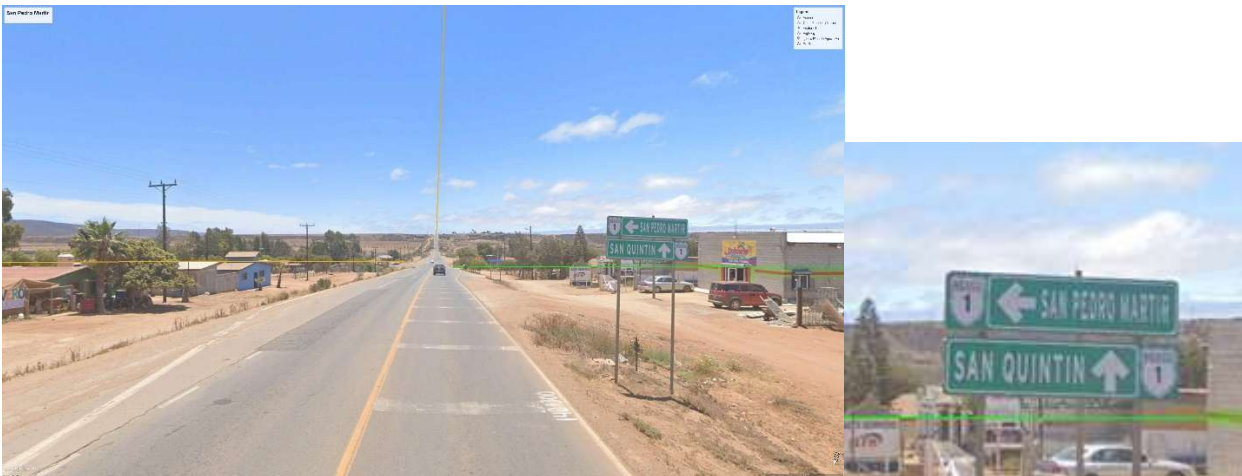
Once the race trucks leave the start line, walk back to team hotel.

Follow the race using the tracking and the team group chat throughout the day.

No later than 8:00pm, head south on HWY 1 toward Cabo San Lucas. Feel free to go earlier to watch the Trophy Trucks. It will take you at least 3 hours to arrive at your first stop.

At KM 126, **FUEL YOUR CHASE TRUCK** at the Pemex in Punta Colonet at KM 128 (approximately 75 miles south of Ensenada).

At KM 140.5, take the exit on left to Sierra de San Pedro Martir. It will be a paved road to Meling Ranch, National Park, and Observatory. Follow signs to Meling Ranch/Observatory/Sierra de San Pedro Martir.





Caution: There are narrow roads, blind corners and speed bumps in towns. Proceed 10.7 miles on Observatory Road from HWY 1 and you will encounter the race course traveling on this road going opposite your direction of travel. Continue another 6 miles going against race traffic through RM 565 where the race course comes in onto the asphalt. (Note you do not stop here now, but you will on the way back.) Drive 14.6 miles further to RM 520 at the Baja Pits. **THIS IS A VISUAL STOP.**

Immediately proceed back toward HWY 1 after 6066 leaves RM 520 at Baja Pits. Drive 14.6 miles and find the Baja Pits at RM 565 and wait for 6066 to reach this section. **THIS IS A FUEL STOP.** Leave this pit at the same time as the race truck, if possible.

Continue down Observatory Road while following the 6066 race truck. Note: this is a 37 mph speed zone for the race truck. Help the race truck maintain their speed while you are driving behind them. Follow the race truck 6 miles until the race course turns off the pavement. Then continue on the pavement 10.7 miles back to HWY 1. Make sure the race truck has cleared RM 585 before you turn right onto HWY 1.

Turn right (north) on HWY 1 toward Ensenada to Colonet at KM 128. **FUEL YOUR CHASE TRUCK.**

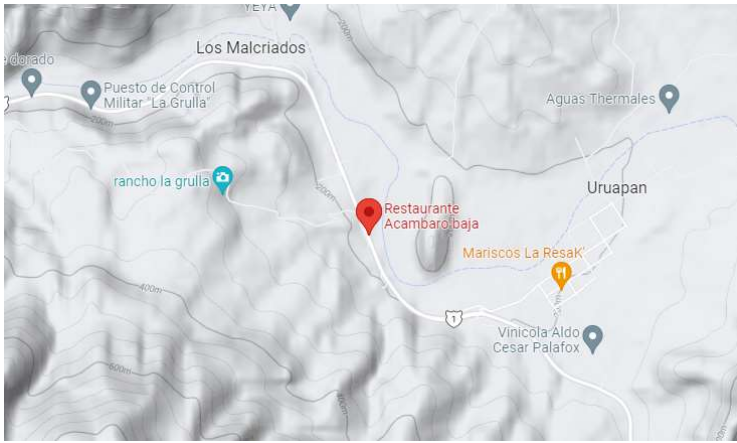
At KM 126, the race course crosses under the HWY at RM 602. **THIS IS A VISUAL ONLY** on the 6066.

Continue to KM 123.6, RM 605 where the race course crosses HWY 1 from your right to your left. **THIS IS A VISUAL ONLY** on 6066.

Continue to KM 102, RM 639 where the course is on the highway headed the opposite direction (coming at you). Baja Pits is at RM 640. Find Baja Pits. **THIS IS A FUEL STOP.**

Continue north on HWY 1. Caution: you will be going against race traffic until KM 96.

Continue north on HWY 1 through Santo Tomas to Uruapan. At KM 40.5 is Restaurante Acambaro Baja. Grab a taco or two and wait for 6066 to clear RM 780.



**HEAD TO THE FINISH LINE!**

