



10 Things To Know Before Ordering Custom Cabinets

Table of Contents

- 1. Define Your Style and Functionality**
- 2. Understand Materials and Construction Methods**
- 3. Measure Your Space Accurately**
- 4. Budget Realistically**
- 5. Know Lead Times and Project Timeline**
- 6. Explore Hardware and Finishes**
- 7. Plan for Maintenance and Durability**
- 8. Consider Workflow and Layout**
- 9. Understand Installation Process**
- 10. Verify Warranty and Service**



Define Your Style and Functionality

Key Point: Clarify the design aesthetic (modern, mid-century, contemporary) and intended use (storage, display, hidden appliances).

Why It Matters: Early decisions on style save time and prevent costly revisions.



Traditional



Mid-Century



Modern

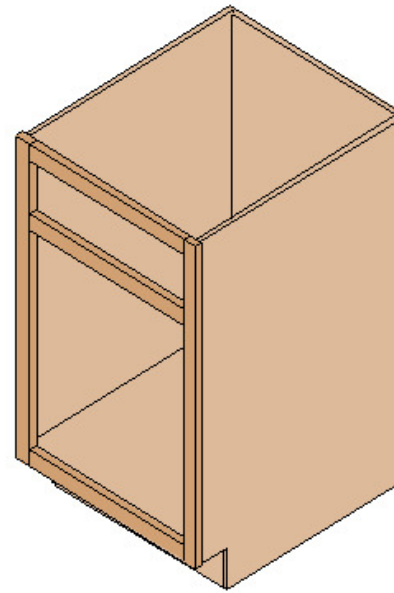
Understand Materials and Construction Methods

Key Point: Know the difference between solid wood, plywood, MDF, and particleboard; and frameless vs. framed cabinets.

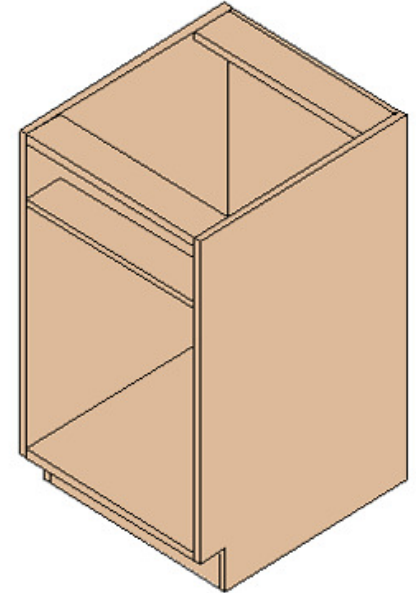
Why It Matters: Material choice affects cost, durability, and appearance.



Solid Wood



Face Frame / Framed



Frameless / Box / Euro



Plywood



MDF



Particle Board

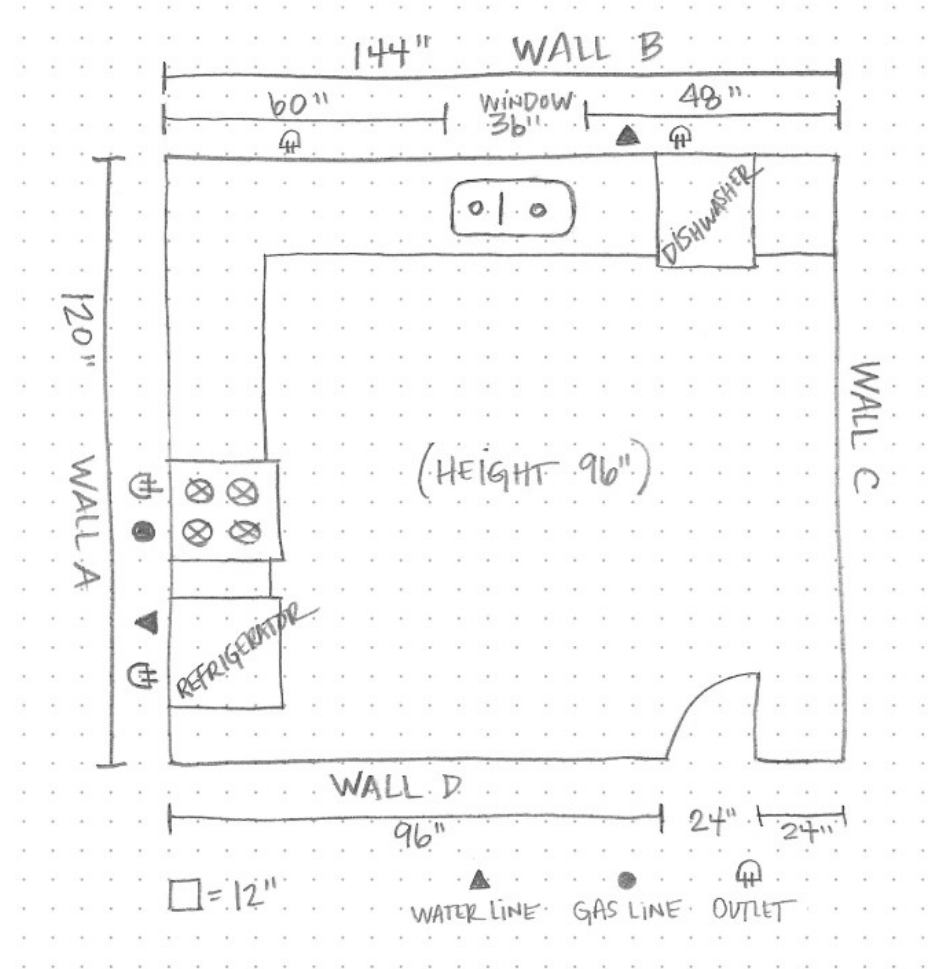
Measure Your Space Accurately

Key Point: Obtain precise measurements of height, width, depth, and consider ceiling slopes, vents, and obstacles.

Why It Matters: Accurate measurements prevent gaps, misfits, and delays.



Precise Measuring



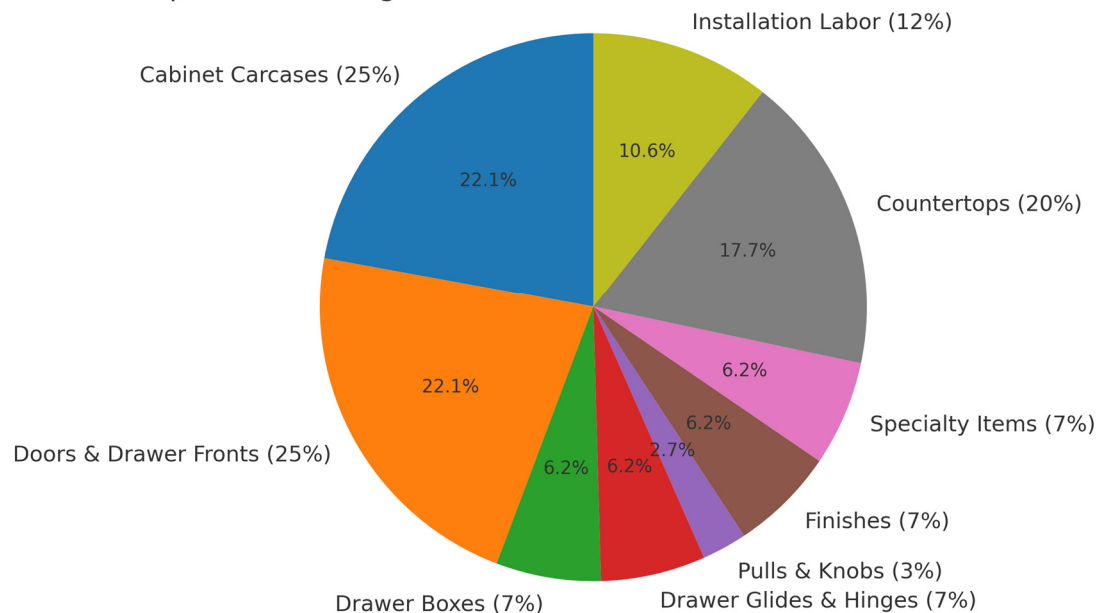
Basic Floor Plan

Budget Realistically

Key Point: Allocate funds for cabinets, hardware, installation, and potential adjustments.

Why It Matters: Helps avoid unpleasant surprises and scope creep.

Midpoint Percentage Breakdown of Custom Kitchen Cabinet Costs



Cabinet Carcasses (20–30 %) The box is the structural core plywood or MDF panels, shelving, and end panels. Higher-end plywood and dovetailed joints increase cost toward the top of the range.

Doors & Drawer Fronts (20–30 %) Style (flat panel vs. raised panel), wood species, edge profiles, and applied moldings drive this cost. Full-overlay doors cost more than frameless slab fronts.

Drawer Boxes (5–10 %) Solid-wood or plywood boxes with dovetail joints at corners are pricier than melamine-wrapped particle board. Soft-close bottoms and under-mount slides add to it.

Hardware (5–15 % total)

Drawer glides & hinges (5–10 %): Soft-close, undermount drawer slides and concealed European hinges.

Pulls & knobs (2–5 %): Price varies widely by metal finish and style.

Finishes (5–10 %) Includes cleaning, sanding, multiple coats of primer/stain/paint, and seal coats. Specialty finishes (e.g. distressing, glazing) push costs up.

Specialty Accessories (5–10 %) Trash roll-outs, built-in spice racks, custom wood vent hoods, appliance garages, pull-out cutting boards, etc.

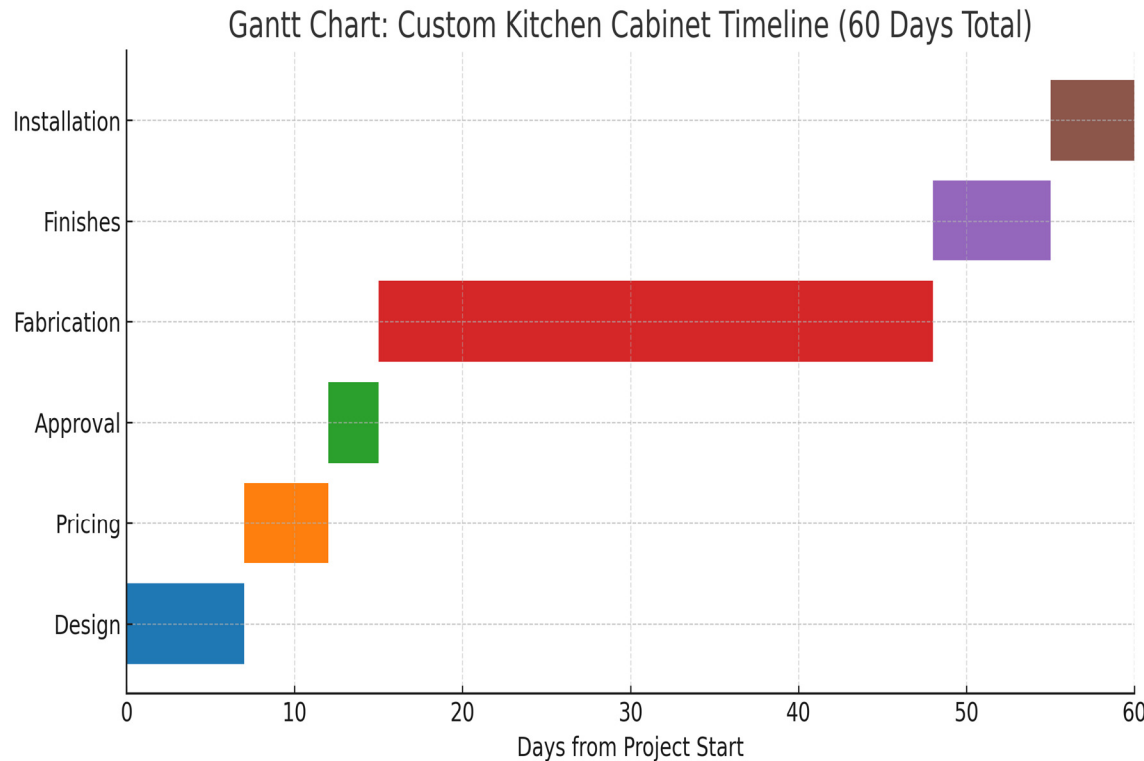
Countertops (15–25 %) Material choice dominates here: laminate at the low end (~15 %), mid-range quartz or granite (~20 %), high-end marble or bespoke butcher block (~25 %+).

Installation Labor (10–20 %) Skilled cabinet installers typically charge per linear foot or day rates; complexity of layout, leveling challenges, and finish carpentry all factor in.

Know Lead Times and Project Timeline

Key Point: Custom cabinets often require a minimum of 6–8 weeks; factor in design, approval, fabrication, and installation.

Why It Matters: Align cabinet delivery with other trades to keep your project on schedule.



Design (Days 0–7): Cabinet layouts, measurements, and 3D drawings

Pricing (Days 7–12): Material and labor cost estimates

Approval (Days 12–15): Client review and sign-off

Fabrication (Days 15–48): Assembly of cabinet boxes, doors, drawers, etc

Finishes (Days 48–55): Painting or staining plus seal coat

Installation (Days 55–60): On-site installation, leveling, hardware fitting

Explore Hardware and Finishes

Key Point: Select knobs, pulls, hinges, and finishes (paint, stain, lacquer) early in the process.

Why It Matters: Hardware and finish choices enhance functionality and aesthetics.



Knobs and Pulls

Brushed Nickel, Oil-Rubbed Bronze, Matte Black, Polished Chrome, Antique Brass



Hinges

Brushed Nickel, Oil-Rubbed Bronze, Matte Black, Polished Chrome, Antique Brass



Finishes

[Paint colors](#) and [sheens](#), [stain colors](#) and sealer sheens (Flatt/Matte, Eggshell, Satin, Semi-Gloss, High Gloss).

Plan for Maintenance and Durability

Key Point: Discuss surface treatments, easy-clean interiors, and protective coatings.

Why It Matters: Ensures long-term beauty and performance.



Cleaning with Ease

Choosing a commercial grade [pre-catalyzed lacquer](#) ensures a quality exterior finish that will withstand staining and chips from dirt and liquids.



UV- Coated Plywood

[UV-coated plywood](#) for interiors of cabinets. This plywood finish features a clear, durable top coating to add resistance to scrapes and chips, and the effects of solvent wipe down. UV coating is a compound that is applied to wet wood and then instantly dried by ultraviolet light.

Understanding Installation Process

Key Point: Clarify site requirements: plumbing, electrical, wall flatness, and floor levelness.

Why It Matters: Smooth installation avoids costly on-site corrections.



Leveling of Cabinets

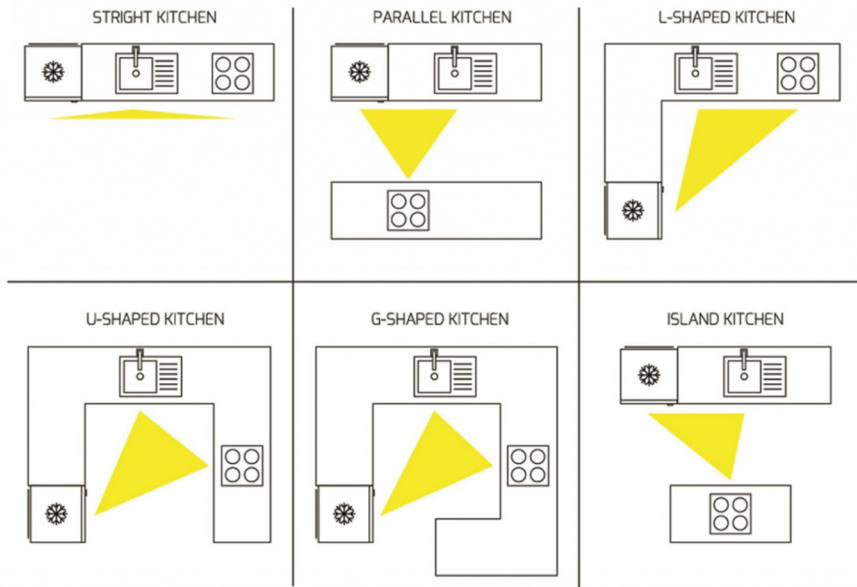


**Incorporating electrical
and plumbing**

Consider Workflow and Layout

Key Point: Apply the kitchen work triangle and consider storage zones (prep, cooking, cleaning).

Why It Matters: Optimizes efficiency and ergonomics.



Work Triangle

The kitchen triangle is a design concept which is also called the golden triangle that controls activity in the kitchen by positioning vital functions in designated spots also known as main work areas. It is also used to design practical and visually acceptable kitchen layouts.



Kitchen Tasks

The main tasks in a home kitchen are done between the stove or oven, the sink, and the refrigerator. The work triangle is made up of these three spots and the imaginary lines that connect them, according to architects.

Verify Warranty Service

Key Point: Review warranty length, coverage details, and post-installation support.

Why It Matters: Protects your investment and peace of mind.



Client Review

The kitchen triangle is a design concept which is also called the golden triangle that controls activity in the kitchen by positioning vital functions in designated spots also known as main work areas. It is also used to design practical and visually acceptable kitchen layouts.



1 Year Limited Warranty

Important items to be included in a warranty:

Warranty Coverage	Warranty Period
What Is Covered	What Is Not Covered
Warranty Claims Procedure	Remedies
Limitation of Liability	Governing Law
Transferability	Contact Information



Next Steps & Contact



Ready to start?

Call us: (913) 219-4297

Email: KansasCabinetsLLC@gmail.com

Visit: www.KansasCabinets.net



Cabinet Shop Tour?

[1171 W Dennis Ave.](#)

[Olathe, KS 66061](#)