



Custom Cabinets Client Questionnaire

Table of Contents

1. Cabinet Construction Preferences
2. Cabinet Style & Design
3. Appliance & Fixture Selections
4. Functional Accessories
5. Inset vs Overlay
6. Hardware & Finish Details
7. Timeline & Logistics
8. Design Inspiration
9. Additional Notes
10. Timeline & Logistics
11. Design Inspiration
12. Open & Floating Shelving
13. Additional Notes
14. Next Steps and Contact



Cabinet Construction Preferences

Do you prefer paint-grade, stain-grade, or a combination of both types of cabinets?

If paint-grade:

What paint color would you like?

(Provide name, brand, and code if possible)

What paint sheen do you prefer?

([Matte](#), [Satin](#), [Semi-Gloss](#), [Gloss](#))

If stain-grade:

What wood species do you prefer?

What stain color would you like?

What sealer type do you prefer?

(Conversion varnish, lacquer, polyurethane, etc.)

What sealer sheen do you prefer?

(Flat, Satin, Semi-gloss, Gloss)



Wood
Species



Paint Colors



Stain Colors

Cabinet Style & Design

What style of cabinet doors do you prefer?
([Shaker](#), [raised panel](#), [slab](#), [reeded](#), etc.)

What drawer front style do you prefer?
(5-piece, slab, [reeded](#), etc.)

Would you like the cabinets to go all the way to the ceiling?

Would you like any [glass cabinet doors](#)?
How many?
Clear, frosted, or decorative glass?

Would you like to include decorative end panels on exposed sides?
(Flat, matching doors, applied panels, etc.)

Would you like any appliance panels?
([Refrigerator](#), dishwasher, warming drawer)

Will you have a custom wood or decorative [vent hood](#)?

Style:
(Boxed, curved, tapered, angled)
[Vent hood insert](#) or blower info?



Cabinet Door Styles



Glass Cabinet Doors



End Panels



**Wood
Vent
Hood**

Door & Drawer Front Overlay or Inset?

Feature	Overlay Doors	Inset Doors
Mounting Style	Sit on top of the cabinet face frame	Fit inside the face frame opening, flush
Reveal	Minimal to no reveal (full overlay) or small reveal (partial overlay)	Uniform small reveal (gap) around the perimeter
Aesthetic	Contemporary - seamless, furniture style	Traditional - craftsman style, precise lines
Tolerance & Fit	More forgiving - easier to install, less precise	Tight tolerances - requires exact fitting
Hinges	Exposed or concealed overlay hinges	Concealed "inset" hinges (more expensive)
Cost	Generally lower - simpler construction	Higher - more labor intensive installation
Maintenance	Easier to adjust and replace doors	Harder to realign; wear can cause sticking
Historical Use	Modern cabinetry	Classic, antique reproduction cabinetry



1/2" Overlay



Inset Cabinets

Appliance & Fixture Se-

Please provide brand and model numbers for all appliances:

Refrigerator:

Dishwasher:

Range/cooktop:

Oven(s):

Microwave:

(Specify location: built-in, [drawer](#), over-range)

Hood insert (such as [Zephyr](#)) or blower:

What sink type will be used?

(Undermount, [farmhouse](#), drop-in, single bowl, double bowl, workstation)

Will a [pot filler](#) over the stove be installed?

Do you need cabinet cutouts for any other special appliances?

([Coffee / Espresso machines](#), [wine cooler](#), etc.)



Oven/Range



Refrigerator



Built-In Espresso
Machine



Farmhouse Sink



Microwave Drawer

Functional Accessories - Pt. 1

Would you like trash can rollouts?

How many?

Single or double bins?

Recycling included?

Would you like a spice pullout or rollout?

(Indicate location: base, wall, or pantry)

Would you like a [utensil organizer](#) or rollout?

Would you like a cutlery drawer insert?

Would you like a knife block insert?

Would you like any roll-out tray dividers
(for baking sheets, trays, etc.)?



Utensil Drawer Insert



**Knife Block
Drawer Insert**



Spice Rollout



Appliance Rollout



Tray Rollout



Trash Rollout

Functional Accessories – Pt. 2

Would you like a lazy susan or [blind corner solution](#)?

If yes, which type?

([Rev-A-Shelf Cloud](#), LeMans, Magic Corner, etc.)

Would you like any drawer organizers?

(Spices, cutlery, lids, Tupperware, etc.)

Do you want a vertical pullout for cooking oils or spices near the cooktop?

Will there be a pantry cabinet?

Should it include rollout shelves, drawers, or pullouts?

Would you like rollout shelves inside base cabinets?

Do you need any [charging drawers](#) or outlets inside cabinets?



[Rev-a-shelf Cloud](#)



[Tupperware Organizer](#)



[Lazy Susan](#)



[Pantry with Rollouts](#)

[Charging
Drawer](#)



Hardware and Finish Details

What hardware finish do you want?
(Matte black, brass, chrome, brushed nickel, etc.)

Do you have specific hardware styles or brands
([Richelieu](#), [Amerock](#), [Schaub](#)) selected?

What hinge type do you prefer?
(Concealed, exposed, soft-close, etc.)

Do you want soft-close doors and drawers?



Soft-close Concealed Hinges



**Soft-Close Undermount
Drawer Glides**



Hardware Pulls & Knobs

Timeline & Logistics

What is your target installation date?

Will installation be:
(New construction or remodel?)

Managed by a general contractor, builder, or homeowner?

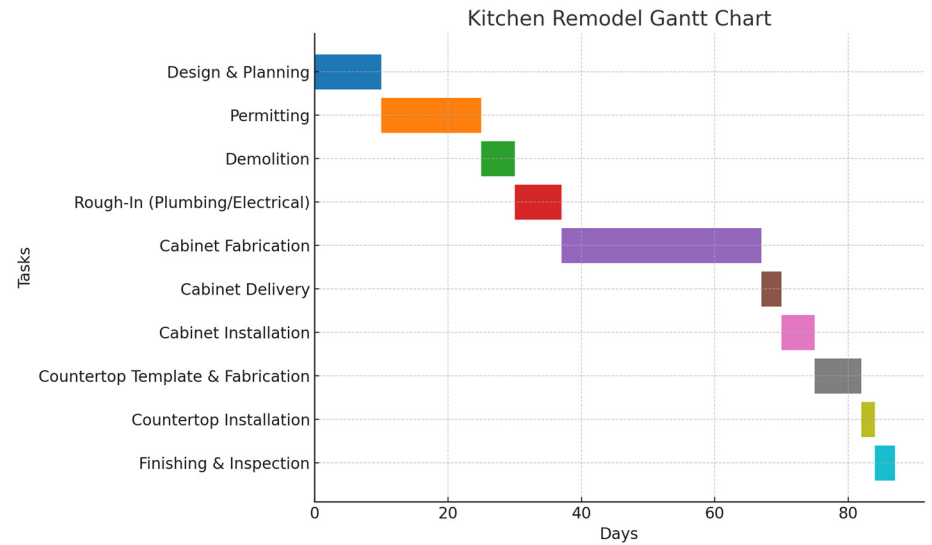
Are there any structural obstructions we should be aware of?
(Beams, vents, bulkheads)

Will you be supplying appliance specs and shop drawings?

Will flooring and countertops be installed before or after cabinets?



Installation



Kitchen Remodel Construction Schedule



Ceiling Obstruction

Design Inspiration

Do you have any [inspiration photos](#) or Pinterest boards you'd like us to reference?

Are there specific cabinet features or styles you've seen and want to replicate?



Open & Floating Shelving

Floating Shelves

Thick walnut or oak boards that slide over concealed steel mounts - perfect for a clean look above a sink or prep area.



Floating Shelves

Pipe and Wood Shelves

Reclaimed wood supported by black/brass pipes; double as utensil or mug hangers.



Pipe & Wood Shelves

Shelves with Undercabinet LED Lighting

Any floating shelf outfitted with slim LEDs underneath to illuminate countertops and highlight décor.



Shelves with
Undercabinet
Lighting

Corner Triangular Tiers

Three small triangular shelves in a corner - ideal for cookbooks, potted herbs, or display pieces in tight spaces.

Tiered Pantry Wall

Five to six narrow shelves for spices and glass canisters; use uniform containers and labels for a “shop” look.

Herb Planter Shelf

Shallow wood shelf with built-in planter trough - grow fresh kitchen herbs right above the backsplash



Herb Planter Shelves

Additional Notes

Are there any special requests for accessibility, child-proofing, or aging-in-place features?

Would you like us to recommend any cabinet lighting solutions , such as [Tresco Lighting](#)?
(Under-cabinet, in-cabinet, toe-kick)

Is there anything else you would like to include or emphasize in your design?



Under Cabinet Lighting
for Floating Vanities



Under Cabinet Lighting



Concealed Baby
Proofing Latch Lock



Upper Cabinet
Pull-down Shelf



Next Steps & Contact



Ready to start?

Call us: (913) 219-4297

Email: KansasCabinetsLLC@gmail.com

Visit: www.KansasCabinets.net



Cabinet Shop Tour?

[1171 W Dennis Ave.](#)

[Olathe, KS 66061](#)