

Amalfi

Executive Home at Lorraine Lakes

2,529 sq ft

4 beds · 3 baths

Bonus Room

2-car garage

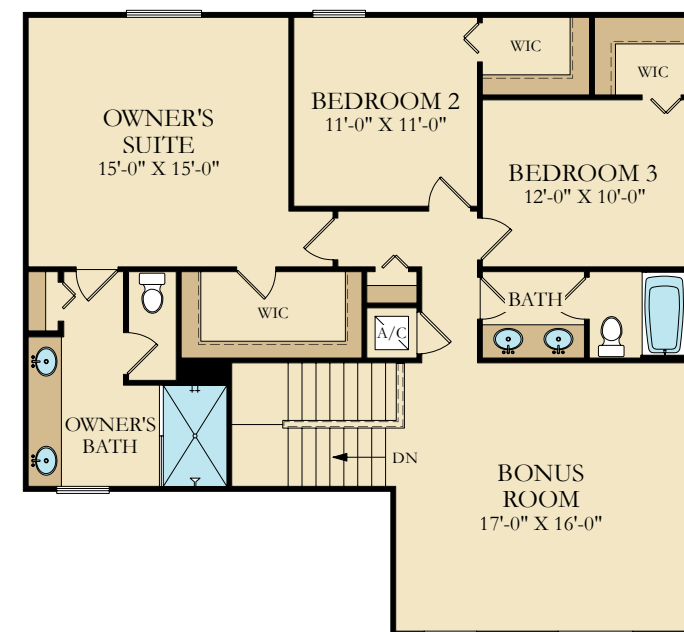
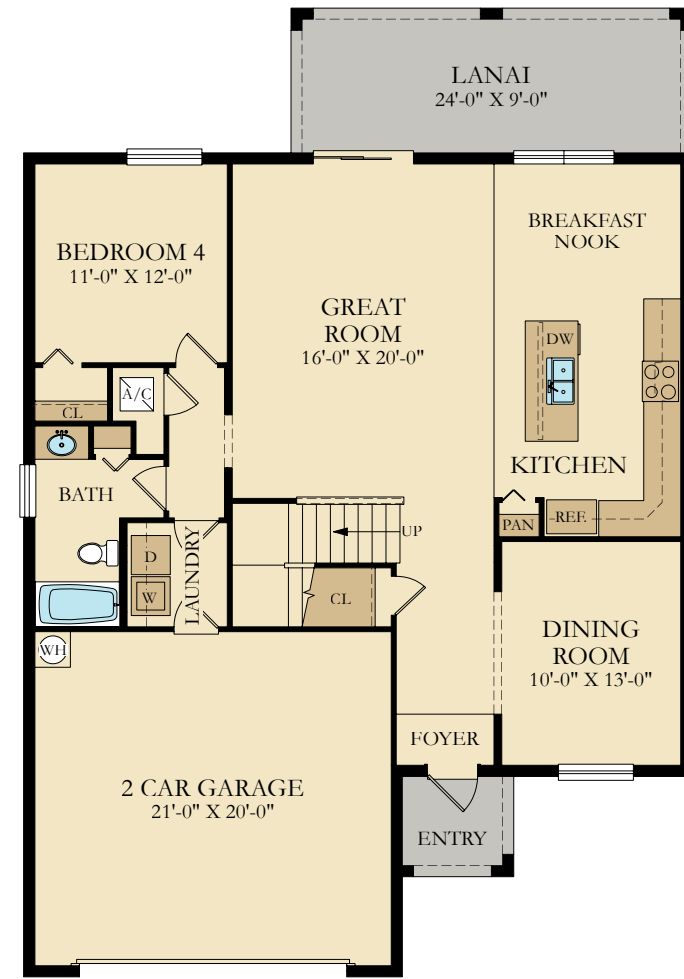
Virtual Tour



ELEVATION CS



ELEVATION DS



Open-Concept Living Area



Owner's Suite



Dining Room



Bonus Room

2,529 Sq. Ft.	Living A/C
40 Sq. Ft.	Entry
208 Sq. Ft.	Lanai
463 Sq. Ft.	Garage
3,240 Sq. Ft.	Total

Amalfi Model Photos - Timber Creek

Please see your New Home Consultant and/or home purchase agreement for actual features designated as an Everything's Included feature. Features, amenities, floor plans, elevations, and designs vary and are subject to changes or substitution without notice. Items shown are artist's renderings and may contain options that are not standard on all models or not included in the purchase price. Availability may vary. Sq. ft./acreage/dimensions is estimated; actual sq. ft./acreage/dimensions will differ. Garage/bay sizes may vary from home to home and may not accommodate all vehicles. This is not an offer in states where prior registration is required. Void where prohibited by law. Copyright © 2023 Lennar Corporation, Lennar, the Lennar logo, WCI, the WCI logo, Everything's Included and the Everything's Included logo are U.S. registered service marks or service marks of Lennar Corporation and/or its subsidiaries. LENNAR HOMES LLC CBC038894 and CGC1523282. LENNAR REALTY INC (CQ1013633) 06/23.