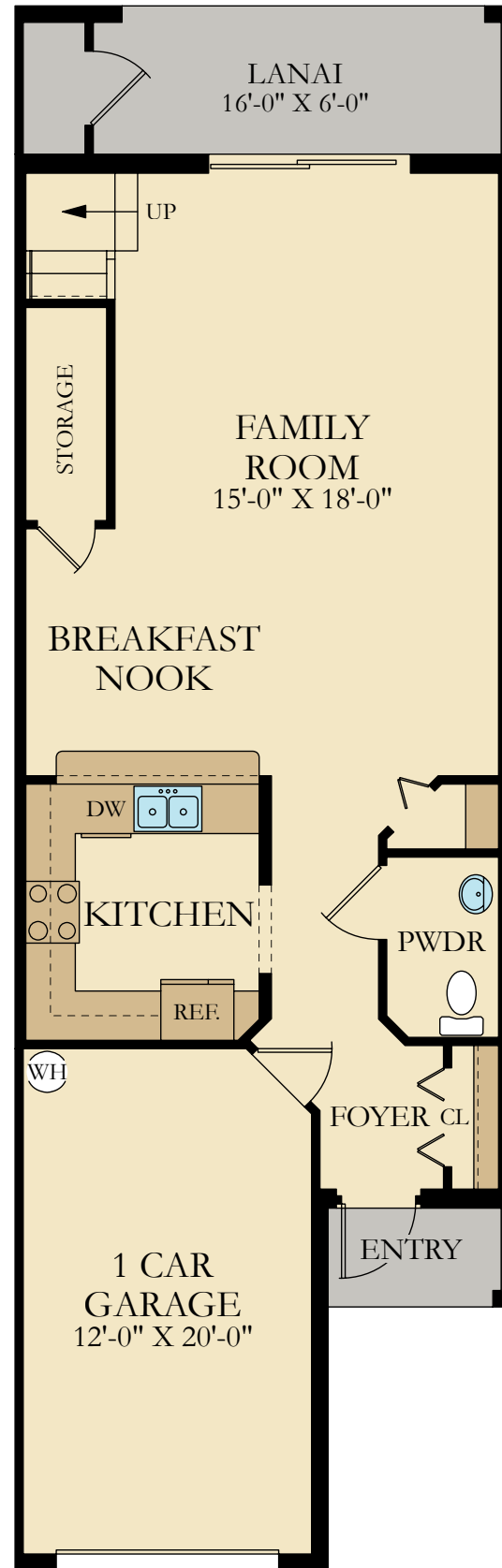


Berkly

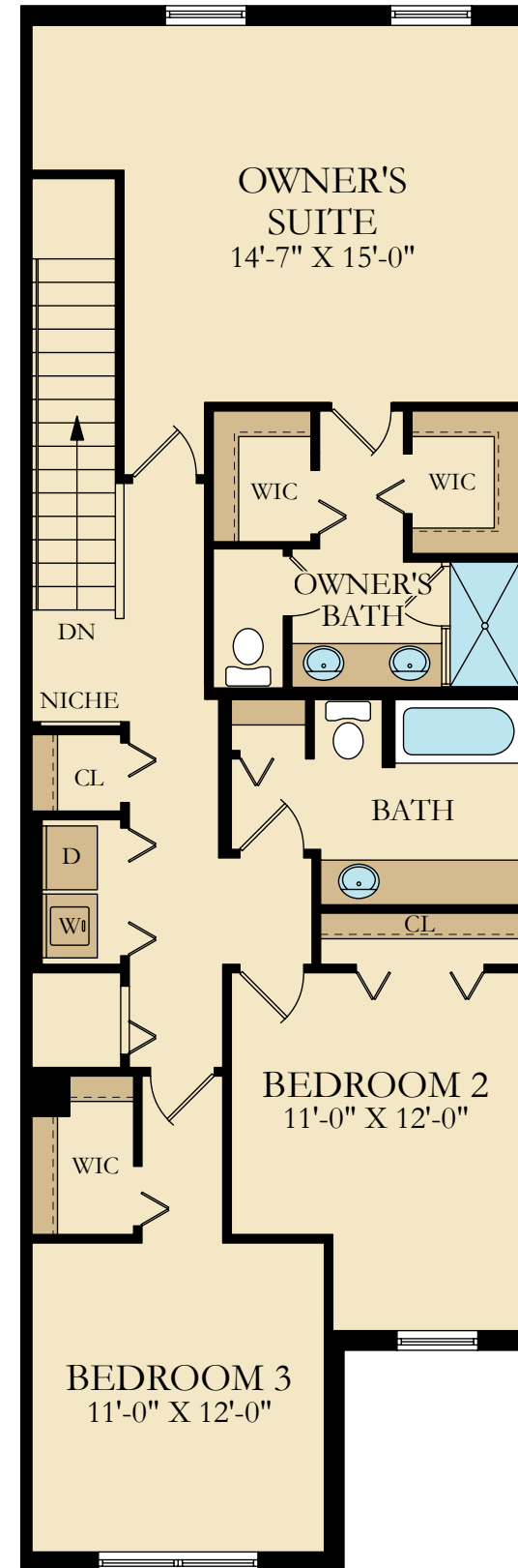
Townhome at Lorraine Lakes

1,879 sq ft
3 beds · 2.5 baths
1-car garage

Virtual Tour



FIRST FLOOR



SECOND FLOOR



Breakfast Nook & Family Room



Owner's Suite



Owner's Bath



Open-Concept Living Area

1,879 Sq. Ft. Living A/C
29 Sq. Ft. Entry
120 Sq. Ft. Lanai
260 Sq. Ft. Garage
2,288 Sq. Ft. Total

Berkly Model Photos - Timber Creek

Please see your New Home Consultant and/or home purchase agreement for actual features designated as an Everything's Included feature. Features, amenities, floor plans, elevations, and designs vary and are subject to changes or substitution without notice. Items shown are artist's renderings and may contain options that are not standard on all models or not included in the purchase price. Availability may vary. Sq. ft./acreage/dimensions is estimated; actual sq. ft./acreage/dimensions will differ. Garage/bay sizes may vary from home to home and may not accommodate all vehicles. This is not an offer in states where prior registration is required. Void where prohibited by law. Copyright © 2023 Lennar Corporation, Lennar, the Lennar logo, WCI, the WCI logo, Everything's Included and the Everything's Included logo are U.S. registered service marks or service marks of Lennar Corporation and/or its subsidiaries. LENNAR HOMES LLC CBC038894 and CGC1523282. LENNAR REALTY INC (CQ1013633) 06/23.