

Trevi II

Executive Home at Lorraine Lakes

2,032 sq ft

4 beds · 3 baths

2-car garage

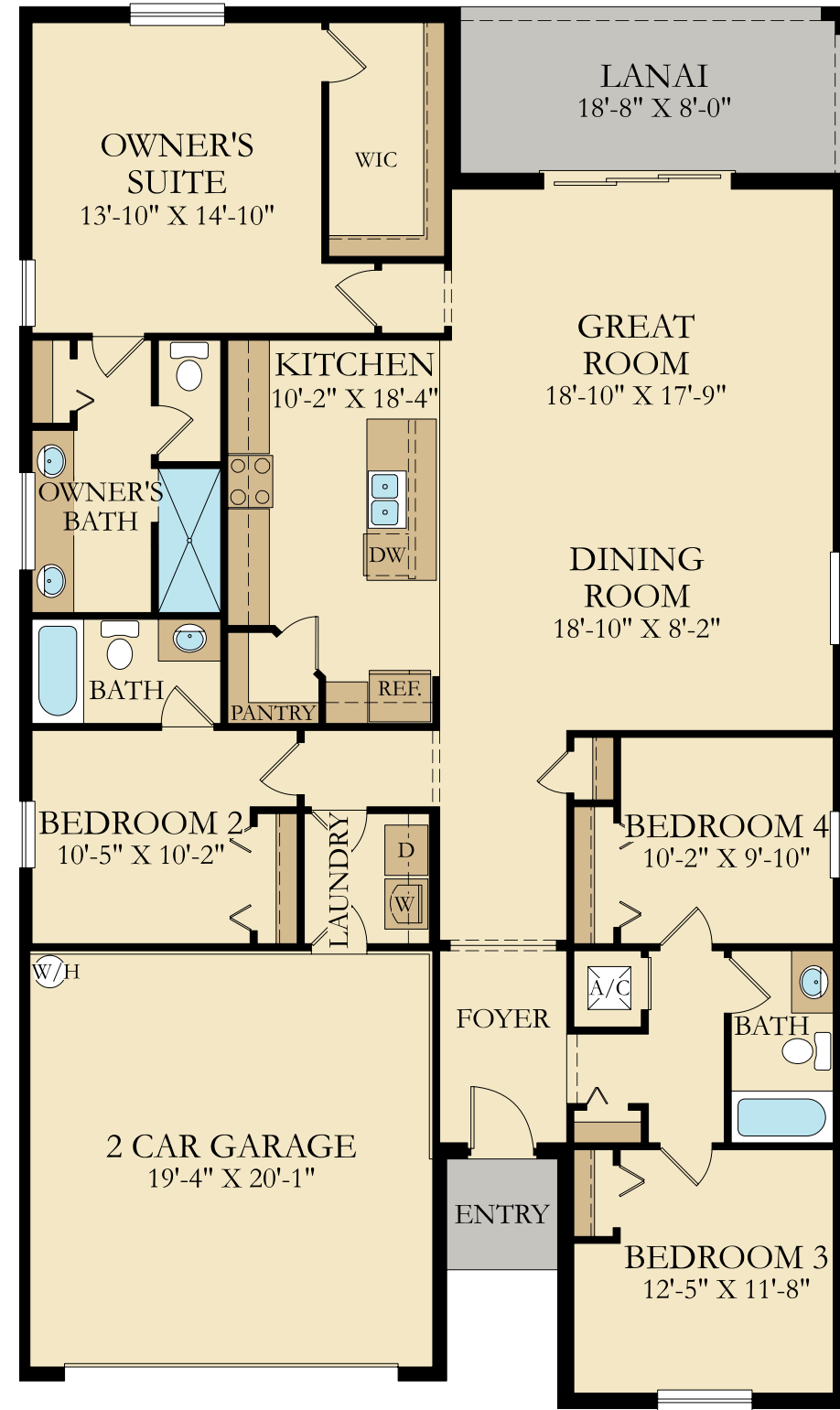
Virtual Tour



ELEVATION C



ELEVATION D



2,032 Sq. Ft. Living A/C
 29 Sq. Ft. Entry
 149 Sq. Ft. Lanai
 420 Sq. Ft. Garage

2,630 Sq. Ft. Total



Kitchen



Open-Concept Living Area



Owner's Suite



Owner's Bath

Trevi Model Photos - Hampton Lakes at River Hall

Please see your New Home Consultant and/or home purchase agreement for actual features designated as an Everything's Included feature. Features, amenities, floor plans, elevations, and designs vary and are subject to changes or substitution without notice. Items shown are artist's renderings and may contain options that are not standard on all models or not included in the purchase price. Availability may vary. Sq. ft./acreage/dimensions is estimated; actual sq. ft./acreage/dimensions will differ. Garage/bay sizes may vary from home to home and may not accommodate all vehicles. This is not an offer in states where prior registration is required. Void where prohibited by law. Copyright © 2023 Lennar Corporation, Lennar, the Lennar logo, WCI, the WCI logo, Everything's Included and the Everything's Included logo are U.S. registered service marks or service marks of Lennar Corporation and/or its subsidiaries. LENNAR HOMES LLC CBC038894 and CGC1523282. LENNAR REALTY INC (CQ1013633) 06/23.