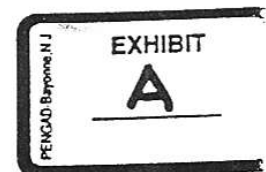


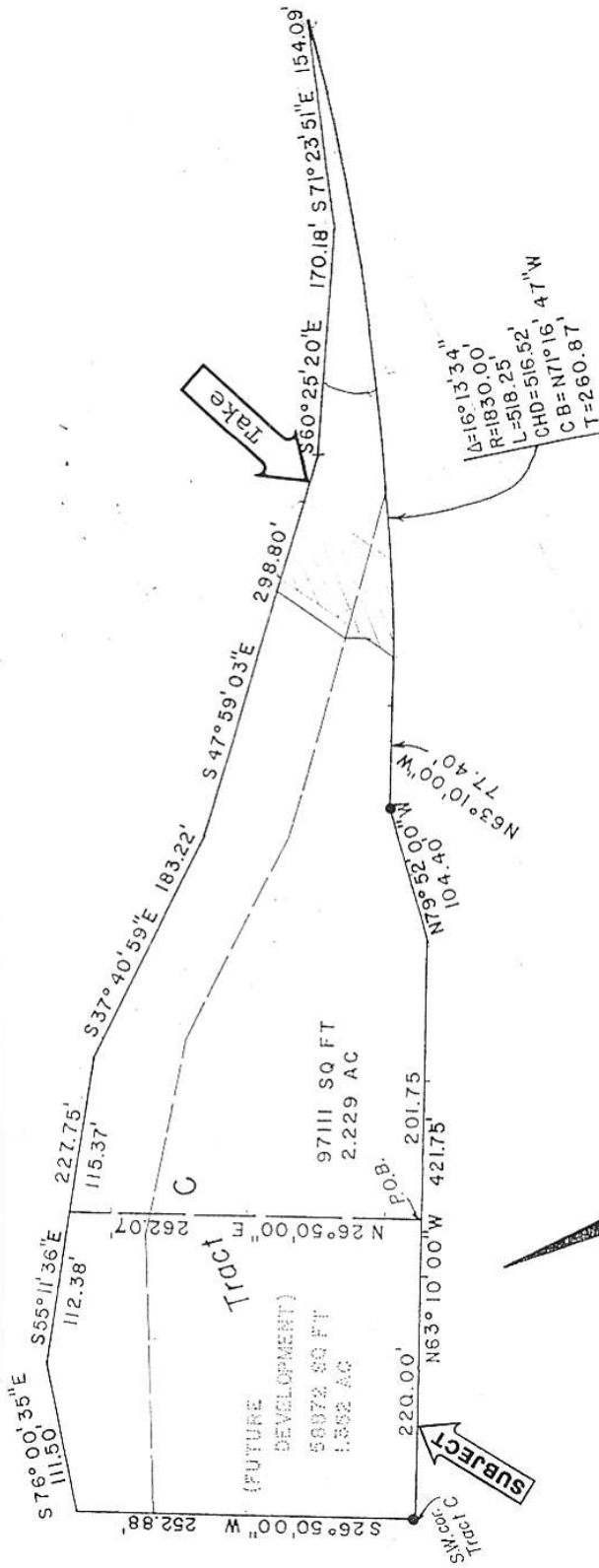
PARCEL DESCRIPTION – Part of Sun River Condominiums

That part of (Corrected) Final Plat – Condominium Map SUN RIVER CONDOMINIUMS according to the map thereof recorded in Book 318 at Page 186 in the office of the Eagle County, Colorado, Clerk and Recorder, described as follows:

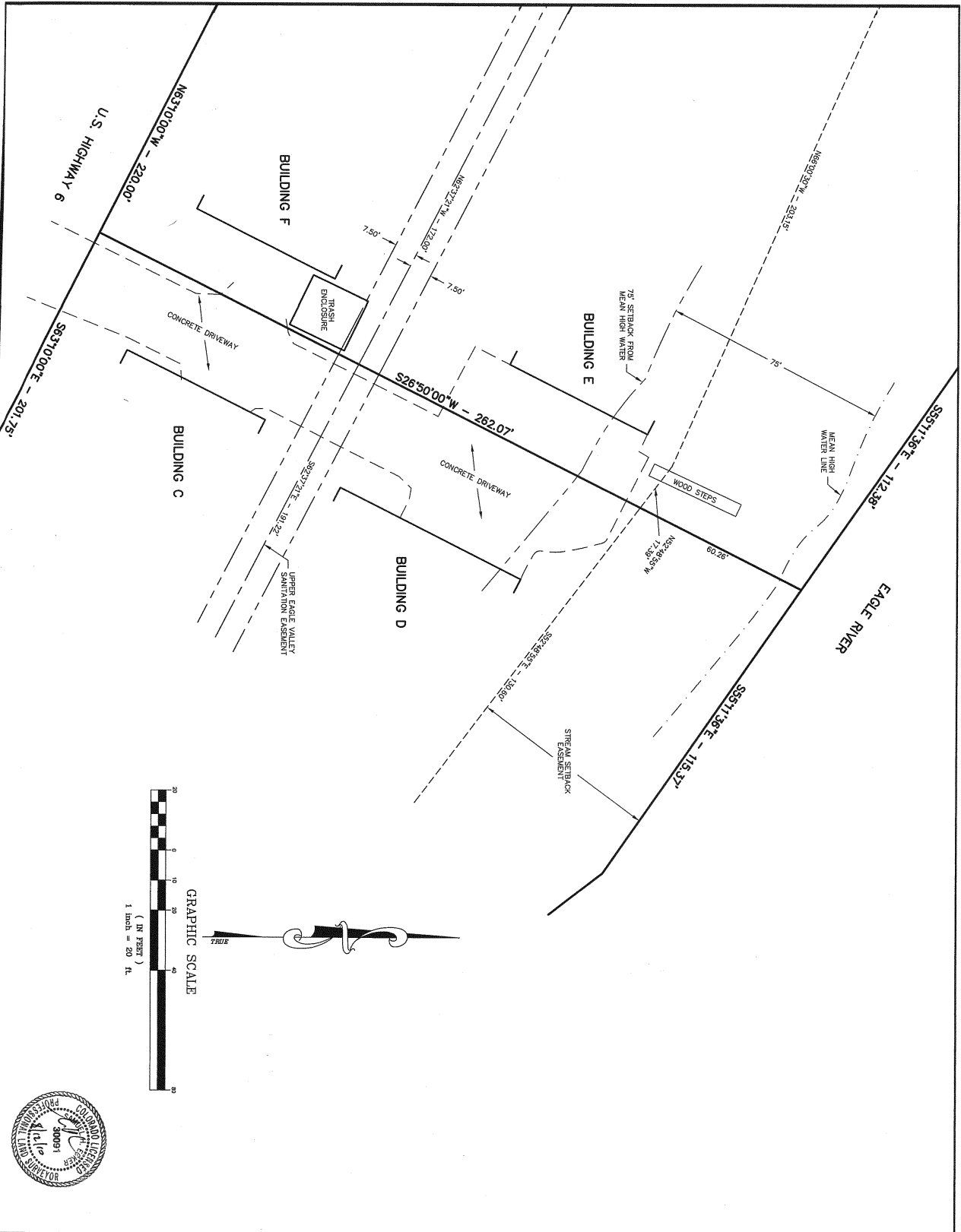
Beginning at the most easterly corner of said Sun River Condominiums; thence along the southerly line of said Sun River Condominiums, said southerly line also being the northerly right-of-way line of U.S. Highway 6 and 24, 278.27 feet along the arc of a curve to the right, having a radius of 1830.00 feet, a central angle of 08°42'45", and a chord that bears N75°02'13"W 278.01 feet to the TRUE POINT OF BEGINNING; thence continuing along said southerly line of Sun River Condominiums and northerly right-of-way line of U.S. Highway 6 and 24, 205.17 feet along the arc of a curve to the right, having a radius of 1830.00 feet, a central angle of 06°25'25", and a chord that bears N67°28'08"W 205.06 feet to the most westerly corner of an existing 60 foot wide Access Easement as shown on said (Corrected) Final Plat – Condominium Map SUN RIVER CONDOMINIUMS; thence departing said southerly line of Sun River Condominiums and northerly line of U.S. Highway 6 and 24, N60°53'00"E 23.41 feet, along the northwesterly line of said 60 foot wide Access Easement; thence, departing said northwesterly line, N25°21'46"E 17.60 feet; thence N60°53'24"E 61.24 feet to the northerly line of said Sun River Condominiums; thence, along said northerly line the following two courses: (1) S47°59'03"E 110.98 feet; (2) S60°25'20"E 53.87 feet; thence, departing said northerly line, 11.11 feet along the arc of a curve to the left, having a radius of 164.75 feet, a central angle of 03°51'47", and a chord that bears S46°46'13"W 11.11 feet; thence 30.81 feet along the arc of a curve to the left, having a radius of 47.00 feet, a central angle of 37°33'10", and a chord that bears S26°03'45"W 30.26 feet to the TRUE POINT OF BEGINNING, containing 11767 square feet, more or less.

Parcel needed from Sun River for road 6/29/01





SITE PLAT



DRAWN BY:	SE	DATE:	8/4/2010
CHECKED BY:	SE	DRAWING NO.:	10-539
JOB NO.:	10-539	SHEET	1 OF 1

**SITE PLAN**  
**SUNRIVER CONDOMINIUMS**  
**EAGLE COUNTY, COLORADO**

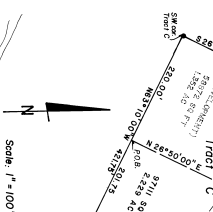
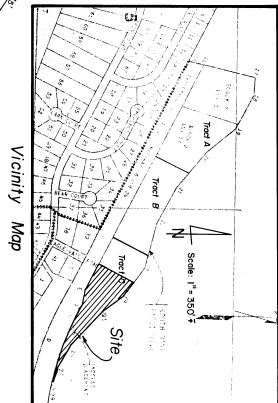
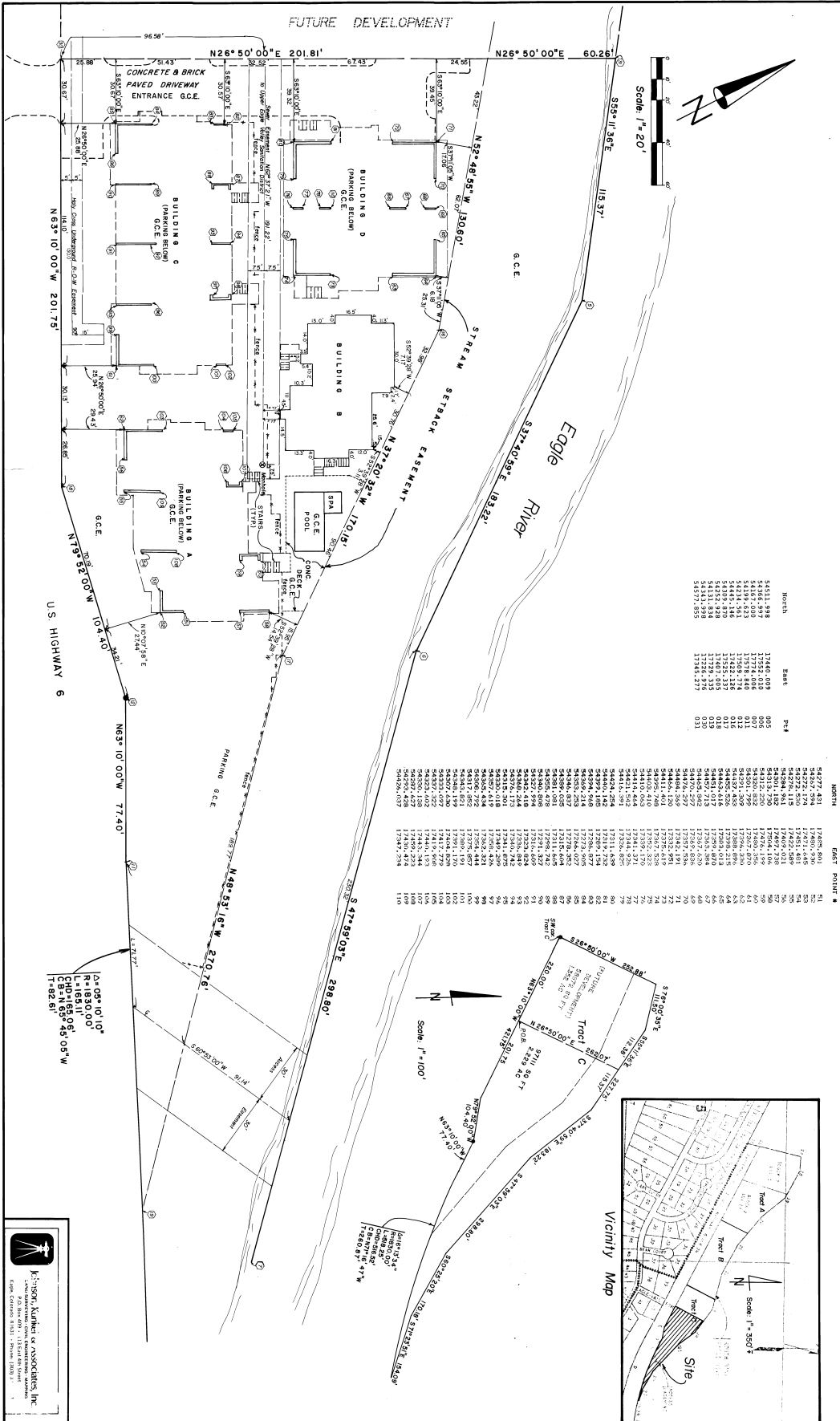


**Gore Range Surveying, LLC**  
 P.O. Box 15  
 Avon, CO 81620  
 (970) 479-8668 • fax (970) 479-0055



(CORRECTED) FINAL PLAT - CONDOMINIUM MAP  
**SUNRIVER CONDOMINIUMS**  
 A Portion of Tract C, according to the Amended Final Plat of Lot 1A, Block 2, Eagle - Vail, Filing No. 2  
 Eagle County, Colorado

Sheet 1 of 6

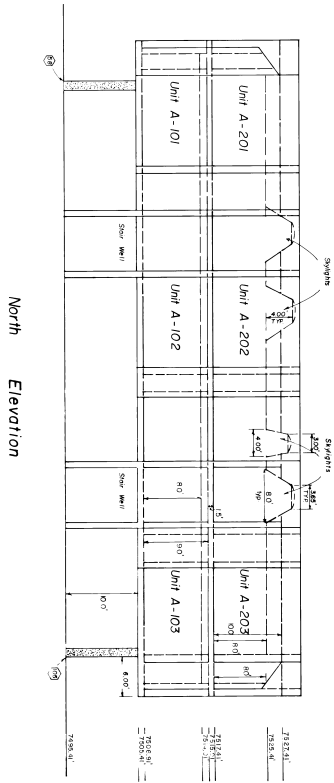


**K&S**  
 K&S Associates, Inc.  
 Surveyors  
 1525 1/2 Street  
 Suite 100  
 Eagle, Colorado 81631  
 Phone: (970) 828-1111  
 Fax: (970) 828-1112  
 Email: info@ksa.com

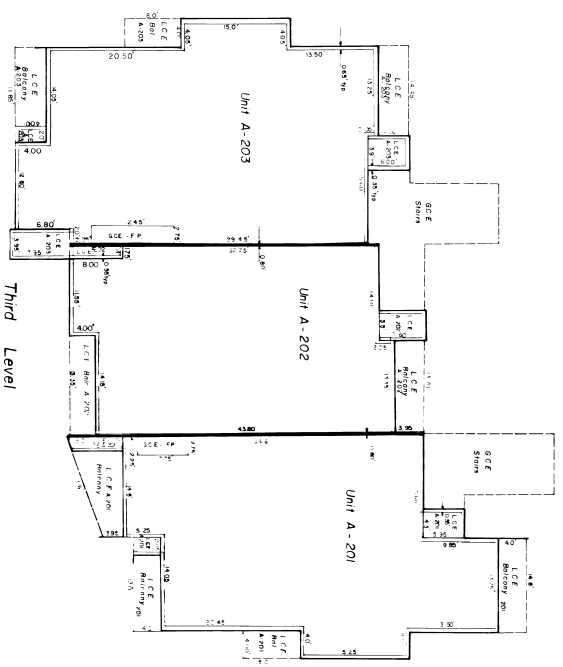
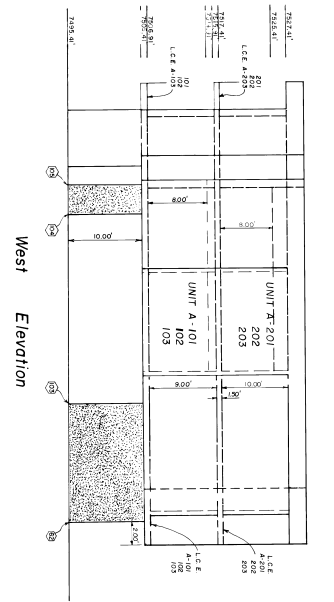


(CORRECTED) FINAL PLAT - CONDOMINIUM MAP  
**SUNRIVER CONDOMINIUMS**

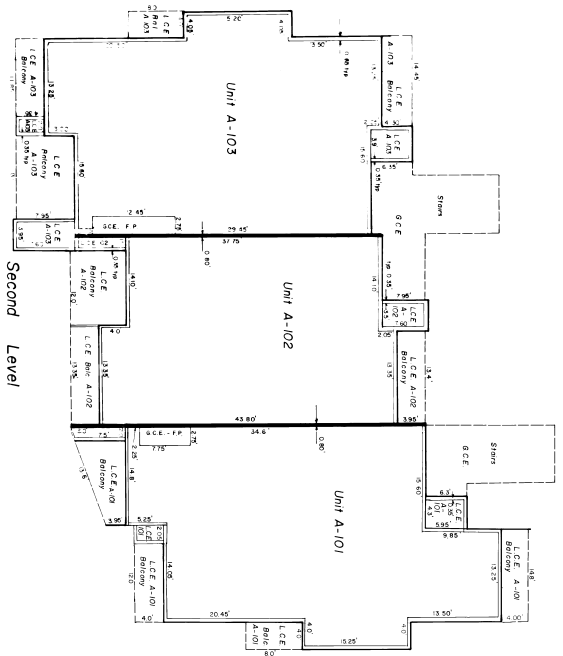
**BUILDING A**



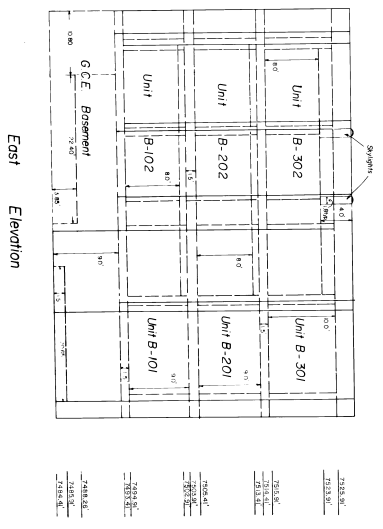
Scale: 1" = 8'



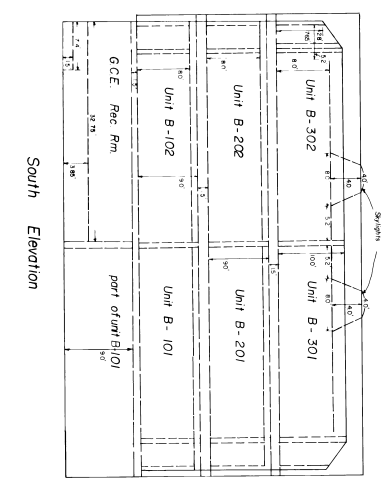
Scale: 1" = 8'



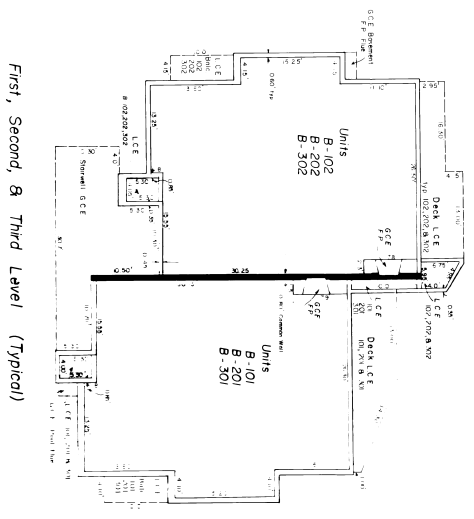
(CORRECTED) FINAL PLAT - CONDOMINIUM MAP  
**SUNRIVER CONDOMINIUMS**  
 BUILDING B



East Elevation



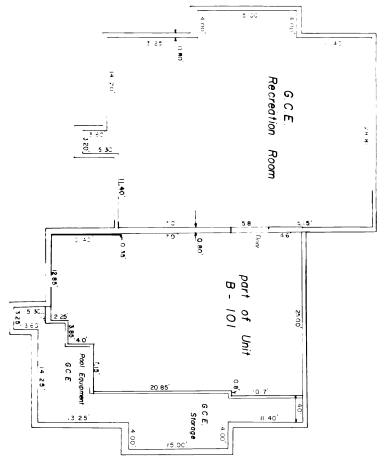
South Elevation



First, Second, & Third Level (Typical)

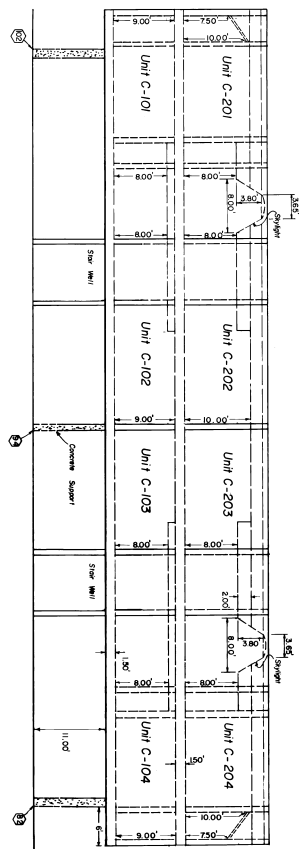


Basement Level



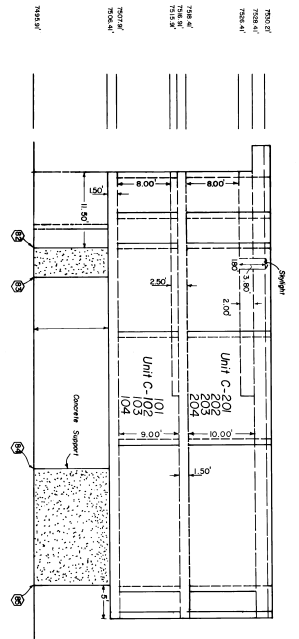


(CORRECTED) FINAL PLAT - CONDOMINIUM MAP  
**SUNRIVER CONDOMINIUMS**  
 BUILDING C

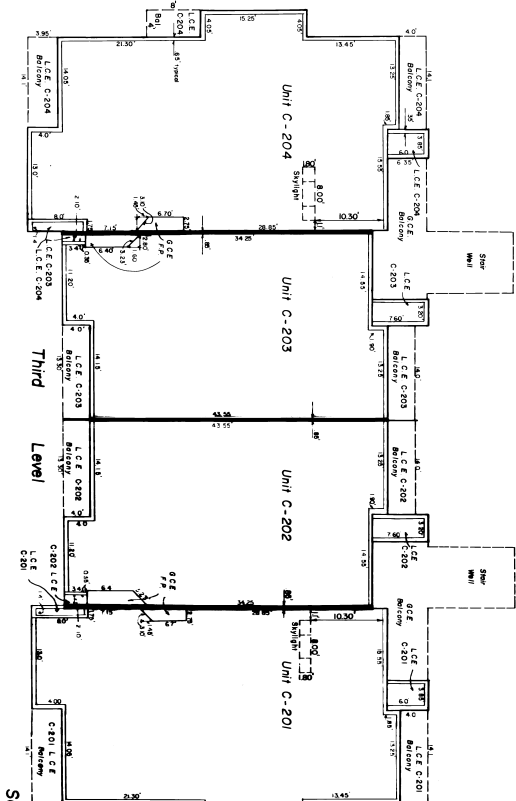


North Elevation

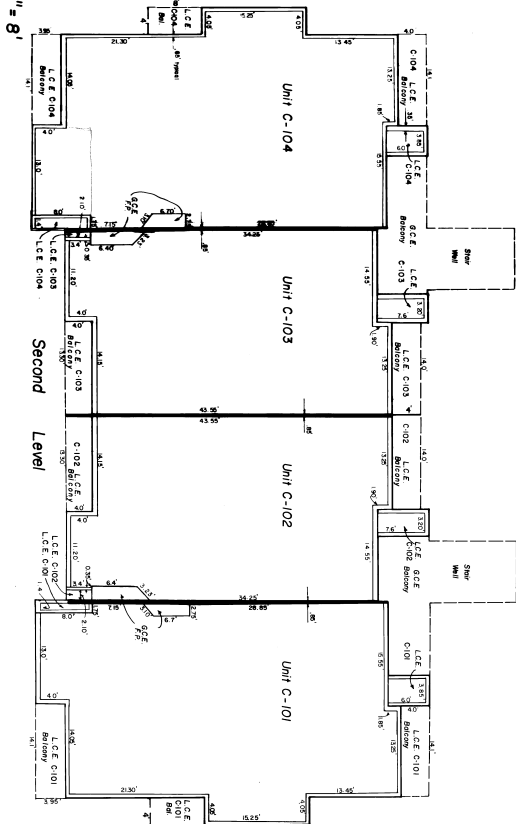
Scale: 1" = 8'



West Elevation



Third Level

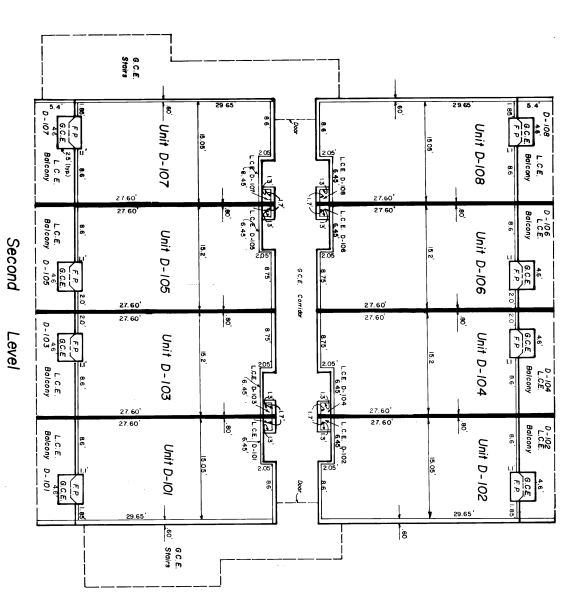
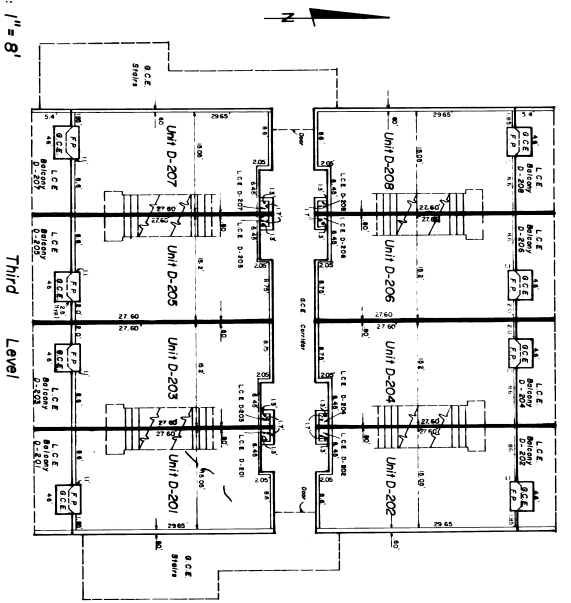
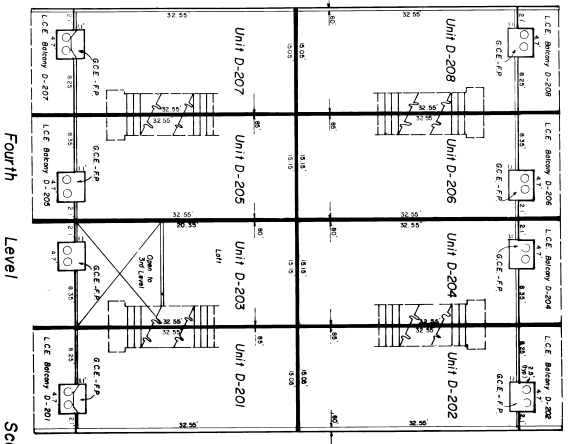
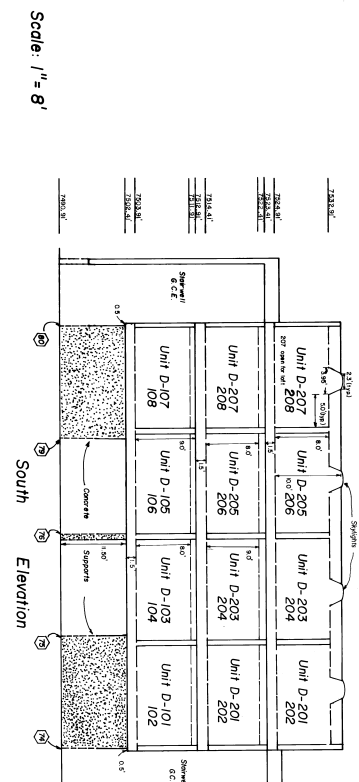
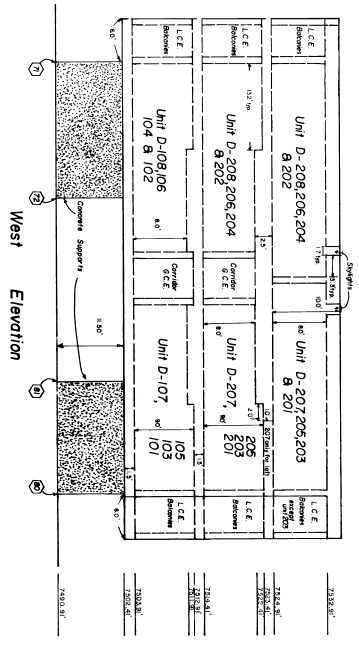


Second Level

DATE: 11/11/03

(CORRECTED) FINAL PLAT - CONDOMINIUM MAP  
**SUNRIVER CONDOMINIUMS**

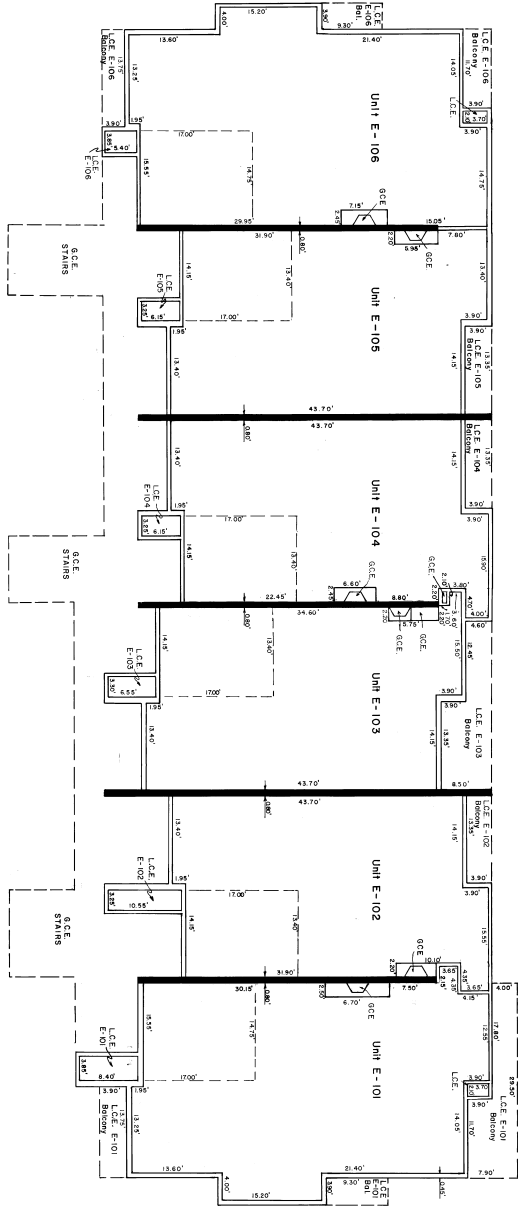
**BUILDING D**



ASB/ML/7/2003

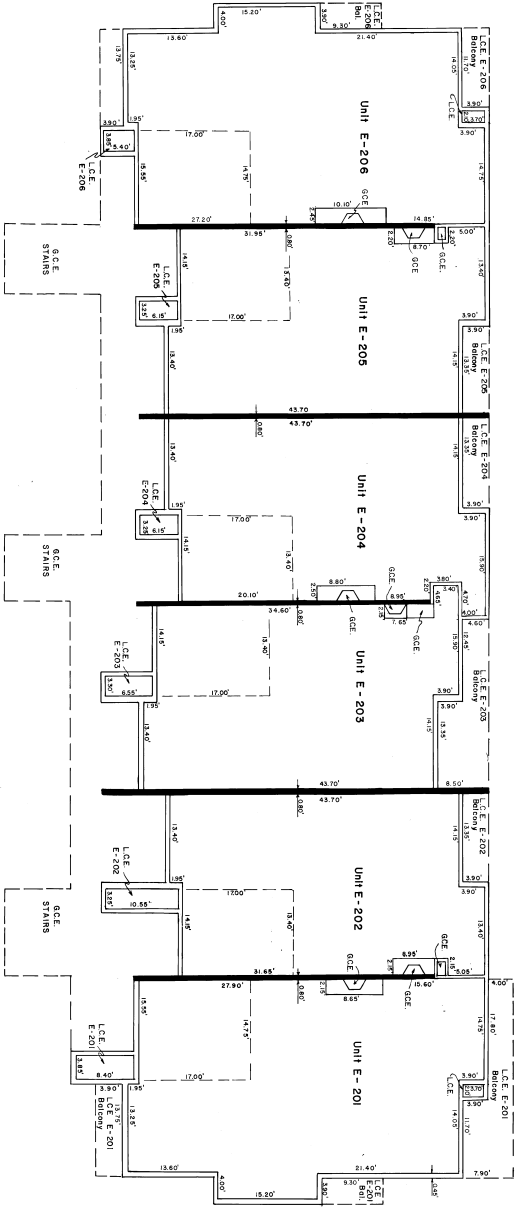
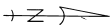


FINAL PLAT - SUPPLEMENTAL CONDOMINIUM MAP  
**SUNRIVER CONDOMINIUMS**  
 Building E  
 Sheet 2 of 5



FIRST LEVEL

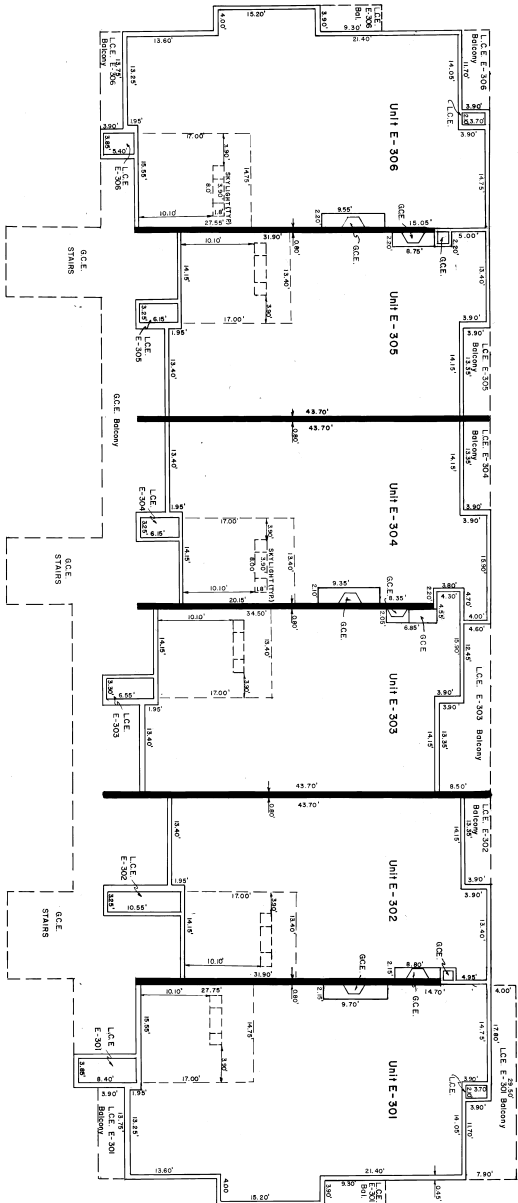
Scale 1"=8'



SECOND LEVEL

**Johnson, Kunkel & Associates, Inc.**  
 Licensed Professional Surveyors  
 111514th Street  
 Fort Collins, CO 80521 Phone: (970) 224-8488

FINAL PLAT - SUPPLEMENTAL CONDOMINIUM MAP  
**SUNRIVER CONDOMINIUMS**  
 Building E  
 Sheet 3 of 5



EAST ELEVATION

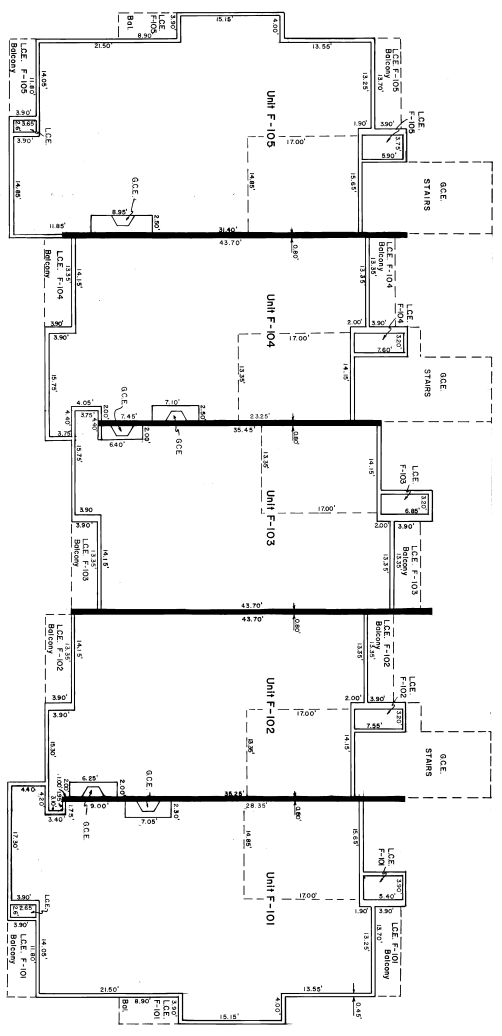
SOUTH ELEVATION

SCALE 1" = 8'

**Johnson, Kunkel & Associates, Inc.**  
 1400 West 20th Street, Suite 111  
 Denver, Colorado 80202  
 Phone: (303) 733-2828

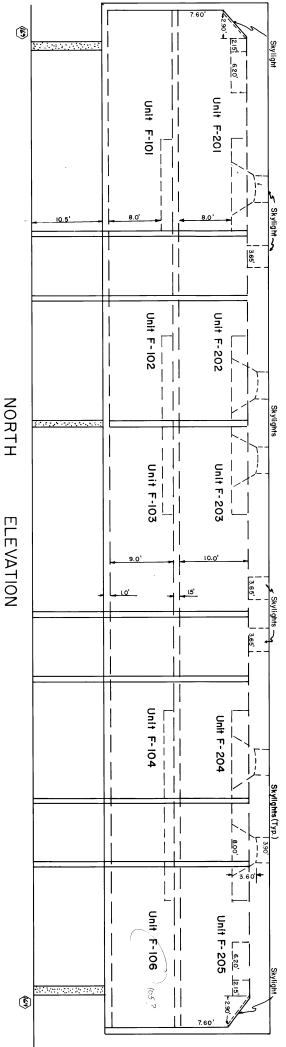
FINAL PLAT - SUPPLEMENTAL CONDOMINIUM MAP  
**SUNRIVER CONDOMINIUMS**  
 Building F

Sheet 4 of 5



FIRST LEVEL

SCALE 1" = 8'



NORTH ELEVATION

SCALE 1" = 8'

**Johnson, Kinzel & Associates, Inc.**  
 1000 West 11th Street  
 Suite 200  
 Fort Collins, CO 80521  
 Phone: (970) 226-8888  
 Fax: (970) 226-8889

