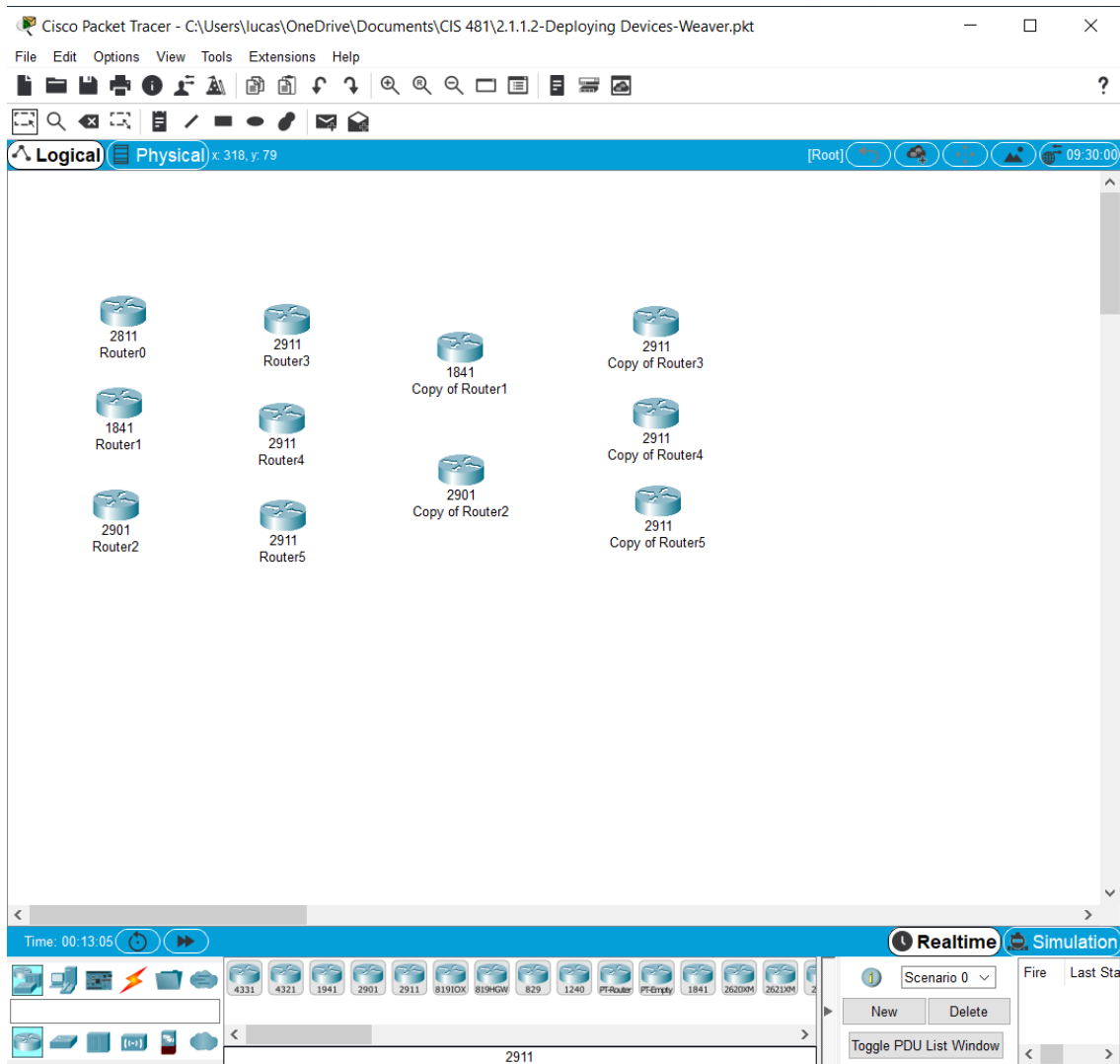


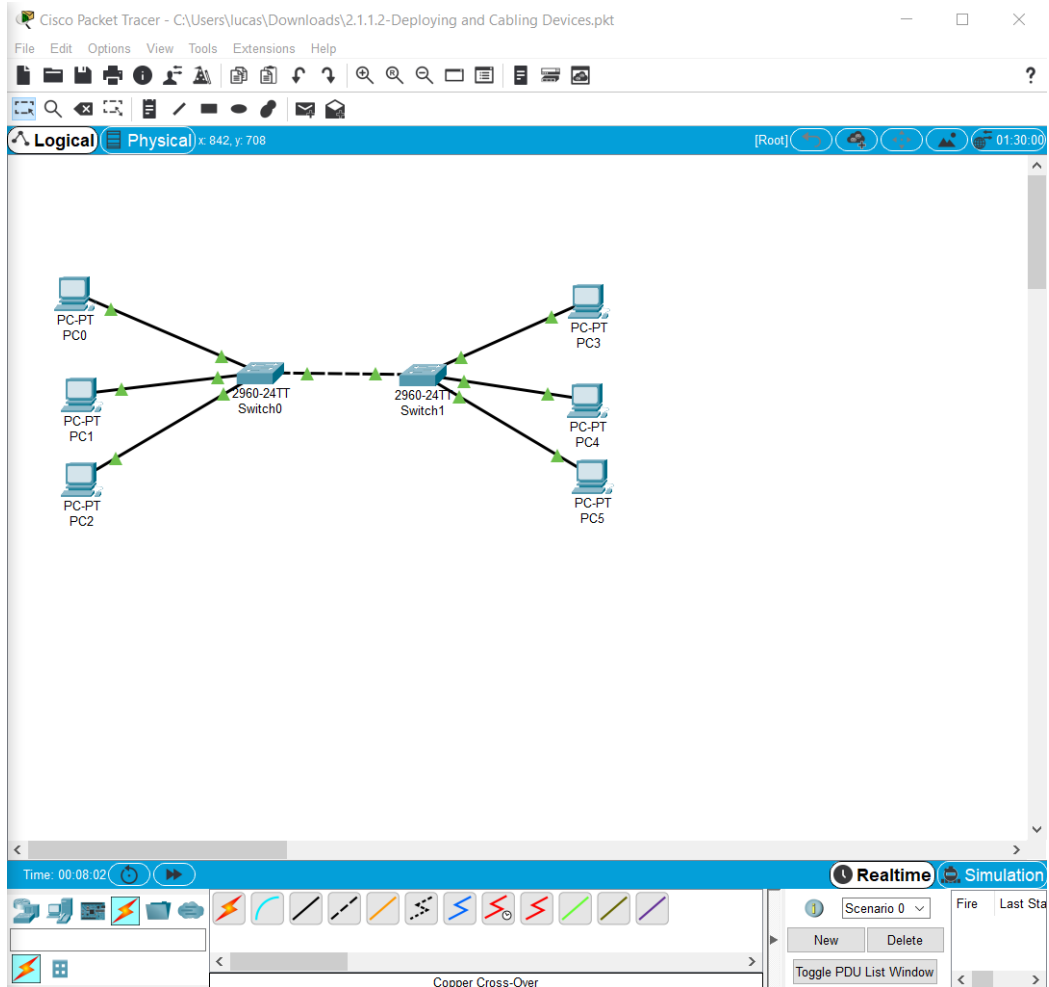
Lab 3 - Packet Tracer

- This is an assignment, and worth 2 points.
- The due date is the next day midnight. It will be graded as pass/fail (2 or 0 points).
- Submit the outcome & three *.pkt file.

Task 1. Complete all the Parts in the following file: *2.1.1.2 Packet Tracer - Deploying Devices.pdf*. Build on the attached file: *2.1.1.2-Deploying Devices.pkt*.



Task 2. Complete all the Parts in the following file: *2.1.1.2 Packet Tracer - Deploying and Cabling Devices.pdf*. Build on the attached file: *2.1.1.2-Deploying and Cabling Devices.pkt*.



Task 3. Complete all the Parts in the following file: *2.1.1.4 Packet Tracer - Configure End Devices.pdf*.

PC0

```

Physical Config Desktop Programming Attributes
Command Prompt
Packet Tracer PC Command Line 1.0
C:\>ping 192.168.1.1

Pinging 192.168.1.1 with 32 bytes of data:

Reply from 192.168.1.1: bytes=32 time<1ms TTL=128
Reply from 192.168.1.1: bytes=32 time<1ms TTL=128
Reply from 192.168.1.1: bytes=32 time<1ms TTL=128
Reply from 192.168.1.1: bytes=32 time<1ms TTL=128

Ping statistics for 192.168.1.1:
    Packets: Sent = 4, Received = 4, Lost = 0 (0% loss),
    Approximate round trip times in milli-seconds:
        Minimum = 0ms, Maximum = 1ms, Average = 0ms

C:\>
  
```

☐ Top

Switch0

Physical Config **CLI** Attributes

IOS Command Line Interface

```
%LINK-5-CHANGED: Interface FastEthernet0/1, changed state to up
%LINEPROTO-5-UPDOWN: Line protocol on Interface FastEthernet0/1, changed state
to up
%LINK-5-CHANGED: Interface FastEthernet0/2, changed state to up
%LINEPROTO-5-UPDOWN: Line protocol on Interface FastEthernet0/2, changed state
to up
%LINK-5-CHANGED: Interface FastEthernet0/3, changed state to up
%LINEPROTO-5-UPDOWN: Line protocol on Interface FastEthernet0/3, changed state
to up

Switch>enable
Switch#configure terminal
Enter configuration commands, one per line. End with CNTL/Z.
Switch(config)#hostname Central
Central(config)#
Central(config)#
Central(config)#interface FastEthernet0/1
Central(config-if)#shutdown

Central(config-if)#
%LINK-5-CHANGED: Interface FastEthernet0/1, changed state to administratively
down
%LINEPROTO-5-UPDOWN: Line protocol on Interface FastEthernet0/1, changed state
to down
Central(config-if)#
```

Ctrl+F6 to exit CLI focus

Copy Paste

☐ Top