

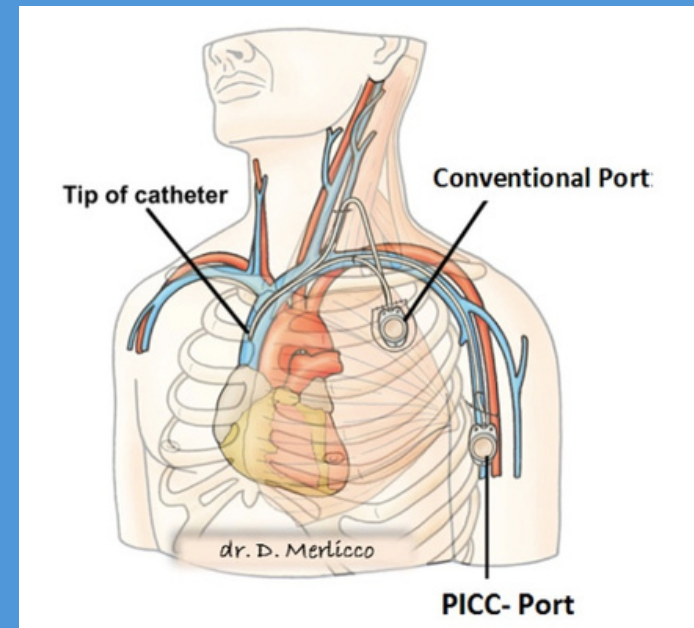


PICC-Port

Combining

THE BEST OF *Both*

Following the introduction of the ultrasound-guided venipuncture technique of the deep veins of the arm, it is now possible to combine the advantages of a totally implantable subcutaneous chamber (PORT) with the catheter introduction and positioning technique typical of PICCs. The catheter is introduced and positioned as for the PICC implantation technique: ultrasound-guided venipuncture, micro introduction set, ECG control of the tip. The catheter is then connected to a small PORT chamber, inserted into a subcutaneous pocket in the middle third of the arm.



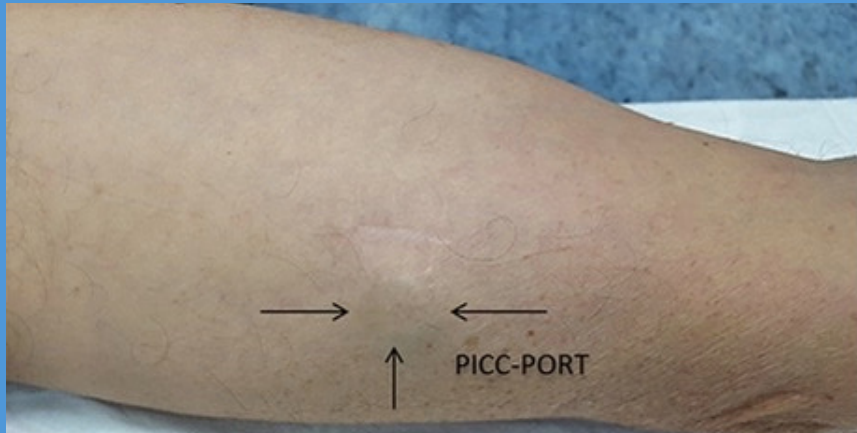
Main indications:

- chemotherapy treatments
- anatomical difficulties with the implantation of traditional ports (prostheses, burns, tracheostomies, etc.)
- aesthetic needs

Main advantages

PICC-PORT:

- absence of the exit site
- reduced risk of infections
- less maintenance
- reduced visibility of the room
- less invasive and perceptible for the patient



Contact: Renier de Meyer
Cell: 084 455 5425
renier@veinwellness.com

Clinical Trainer:
Louise Esterhuizen
Cell: 064 551 1218



Product Info:

Product Code: 201161755

Material: Titanium

Shape and size: wedge – base
21 mm x 16 mm

Height: 8.6mm

Weight: 6 g

Internal Volume: 0.2ml

Septum Material: Silicone

Available diameter for stings: 9 mm

Maximum number of bites:

1500 with 22GA Huber needle

Max flow rate : 2 ml/s with Max pressure
300PSI, Max Viscosity 12cP

Contents of the Kit: Room; Catheter
Connector

Huber needle 22GA x 25.4 mm

Luer connector

Straight tip Nitinol guide

21 GA egocentric needle

Dilator / Introducer

Stainless steel tunneler