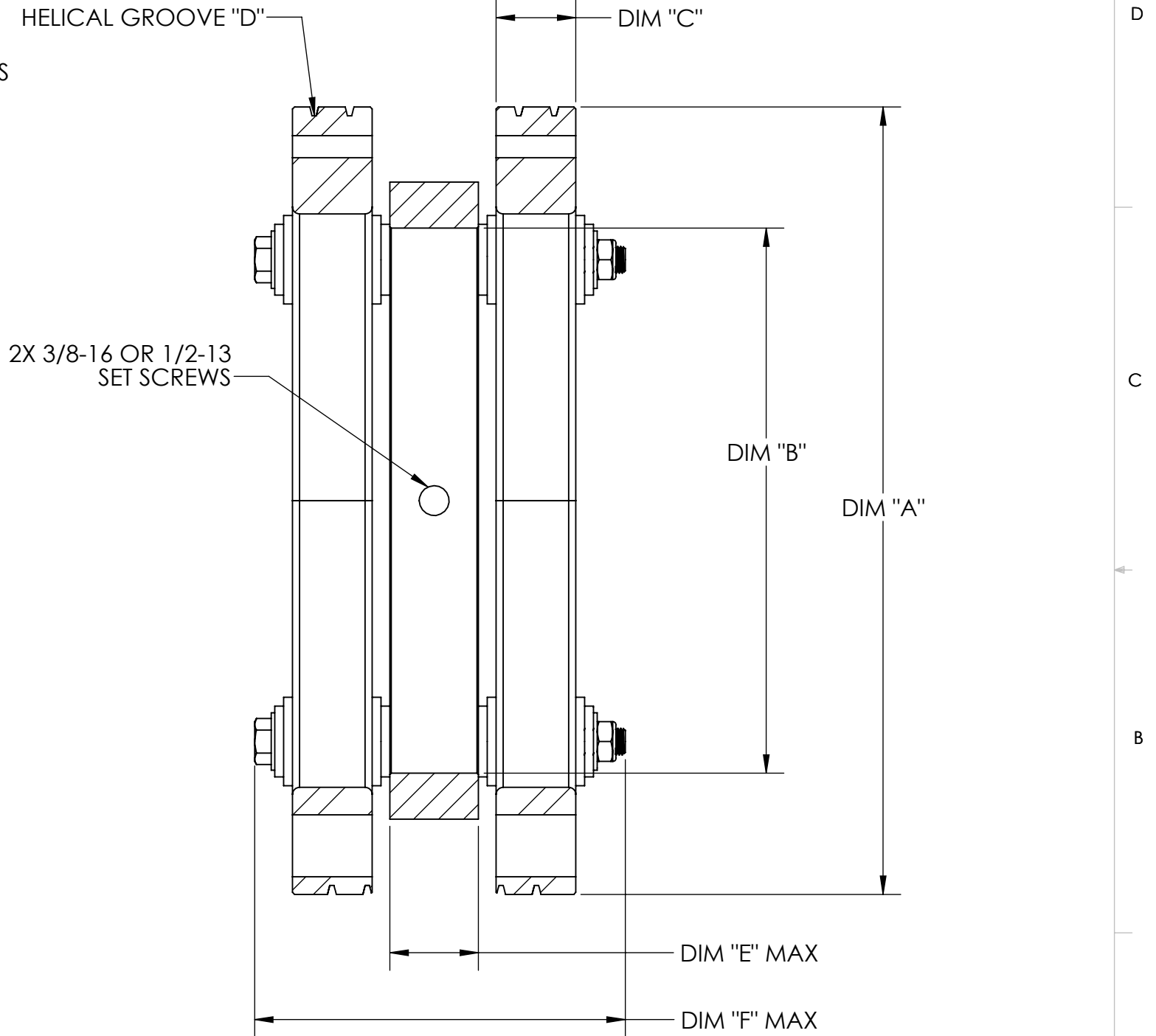
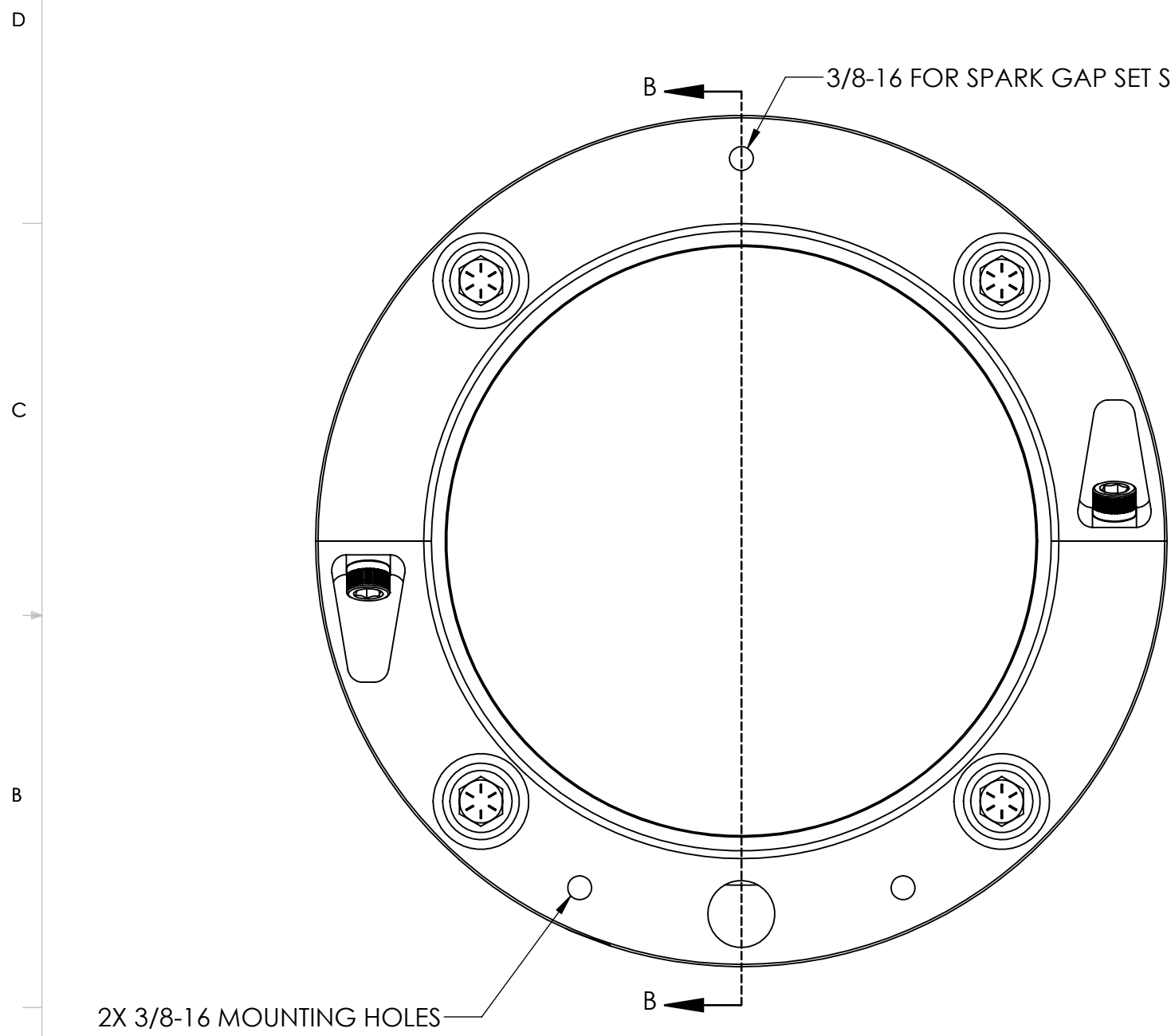



8 7 6 5 4 3 2 1



A

DIMENSIONS ARE IN INCHES TOLERANCES: ANGULAR: $\pm 1^\circ$ TWO PLACE DECIMAL $\pm .010$ THREE PLACE DECIMAL $\pm .005$	NAME	DATE	
	DRAWN	BLD	
MATERIAL	<b>PROPRIETARY AND CONFIDENTIAL</b> THE INFORMATION CONTAINED IN THIS DRAWING IS THE SOLE PROPERTY OF RAPID TECH. ANY REPRODUCTION IN PART OR AS A WHOLE WITHOUT THE WRITTEN PERMISSION OF RAPID TECH IS PROHIBITED.		<b>SLIP RING ORDERING DATA</b>
FINISH	SIZE <b>A</b>	DWG. NO.	REV.
DO NOT SCALE DRAWING	THIRD ANGLE PROJECTION	SCALE	WEIGHT: SHEET 1 OF 2

8 7 6 5 4 3 2 1

D

D

	DESCRIPTION	TYPICAL VALUES	NOTES	INPUTS
JOB NUMBER	-	-	-	
DIM "A"	OD OF RINGS	-	-	
DIM "B"	SHAFT DIAMETER	-	RECORD EXACT SHAFT DIAMETER, HUB WILL BE MADE +.001/+.002	
DIM "C"	WIDTH OF RINGS	.875, 1.000, 1.125, 1.250	-	
NOTE "D"	HELICAL GROOVE	YES/NO	-	
DIM "E"	MAX HUB WIDTH	>3"	TYPICALLY NOT CRITICAL, THIS DOES NOT AFFECT ASSEMBLY WIDTH. IF LESS THAN 3" PLEASE SPECIFY	
DIM "F"	MAX ASSEMBLY WIDTH	>6"	TYPICALLY NOT CRITICAL IF LESS THAN 6", PLEASE SPECIFY	
RING MATERIAL	-	BRONZE, STAINLESS STEEL	-	
SPLIT HUB	-	YES/NO	SPLIT HUB PREFERRED IF GEOMETRIC CONDITIONS ALLOW	

C

C


B

B

A

A

ADDITIONAL FIELD NOTES:

DIMENSIONS ARE IN INCHES TOLERANCES: ANGULAR: ± 1° TWO PLACE DECIMAL ±.010 THREE PLACE DECIMAL ±.005	NAME	DATE	
	DRAWN	BLD	
MATERIAL	PROPRIETARY AND CONFIDENTIAL THE INFORMATION CONTAINED IN THIS DRAWING IS THE SOLE PROPERTY OF RAPID TECH. ANY REPRODUCTION IN PART OR AS A WHOLE WITHOUT THE WRITTEN PERMISSION OF RAPID TECH IS PROHIBITED.		SLIP RING ORDERING DATA
FINISH	DO NOT SCALE DRAWING		
THIRD ANGLE PROJECTION		SCALE	WEIGHT: _____ SHEET 2 OF 2