

100C 4 CHANNEL CONDUCTANCE PROBE RELAY

FEATURES



- Σ **Microprocessor Based**
- Σ **Four Channel Conductance Probe Inputs**
- Σ **Adjustable Sensitivity**
- Σ **8 Status Indicating LED's**
- Σ **SCADA Ready**
- Σ **4 10A Relay Outputs**
- Σ **Removable Barrier Terminals**
- Σ **RS 485 MODBUS® Port (Networkable)**
- Σ **User Programmable**
- Σ **Din Rail Mount**
- Σ **110VAC or 24VDC Power**

The Sigma Controls 100C Series Conductance Level Relay monitors 1 to 4 conductance rod level probes. Each input operates its own output relay. LED indicators identify active probes and relays.

The probe relay can be user configured for specific applications such as pump control (Simplex & Duplex), leak detection, fill or empty monitoring and high or low level alarms.

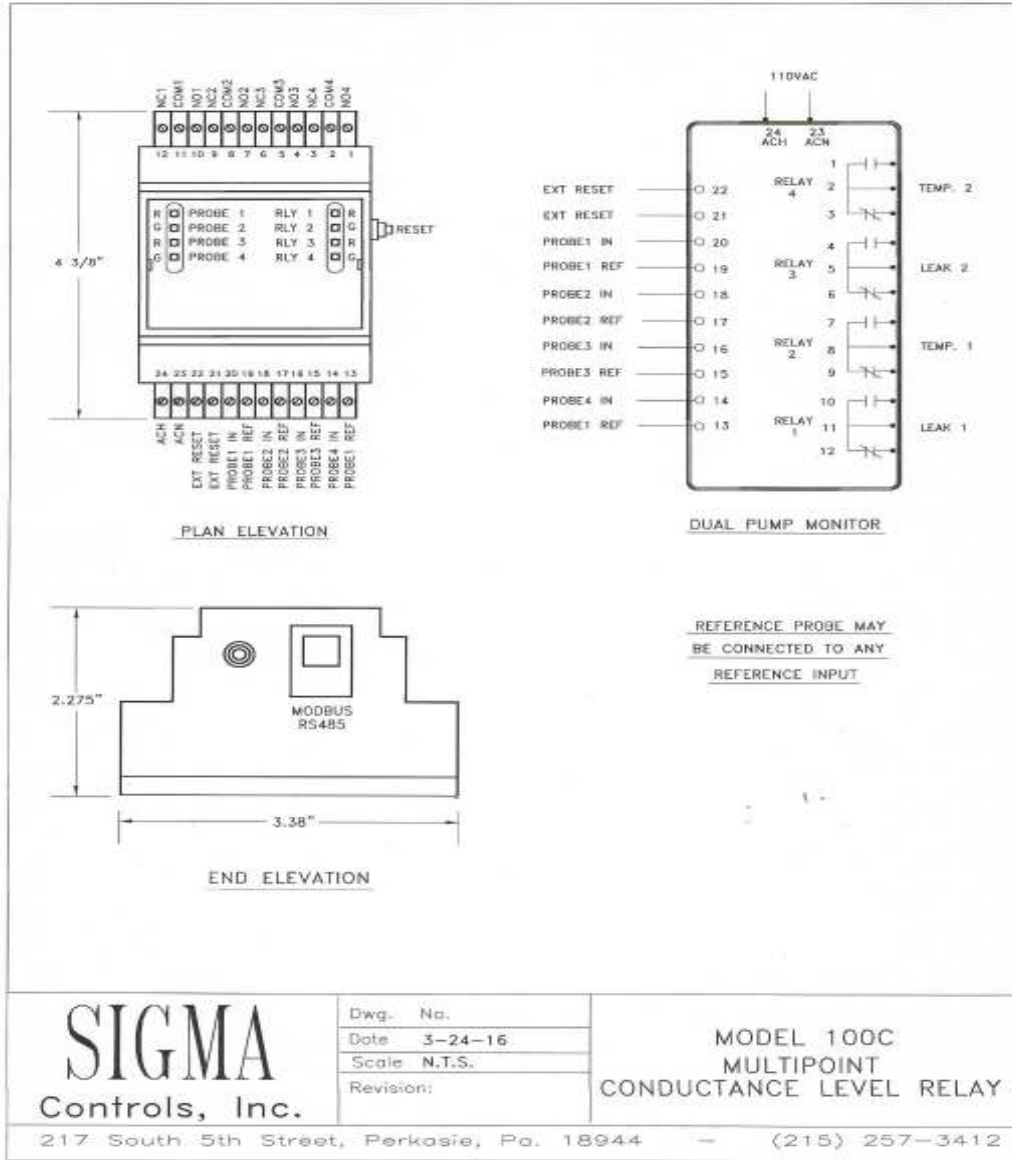
A Modbus® RS485 Data output allows for integration in SCADA Systems.

SPECIFICATIONS

Power Supply	24VDC or 110VAC (optional)	
Relay Output (4)	@120VAC @30VDC	
Input Switch	S.S. Conductance Level Probe (4)	
Temperature Operating Storage	-20°C to +60°C -40°C to 85°C	
Relay Life	Electrical 100K cycles Mechanical 10,000K cycles	
Termination	Removable screw terminal barrier strip	
LED Indicators	LED Indicators	
Probes On	Relays On	
1	1	Red
2	2	Green
3	3	Red
4	4	Green

FEATURES

Adjustable Sensitivity for Probes	Utilizes float switch or conductance probes for moisture sensing.
Fault Monitoring	Intermittent loss of signal causes alarm indicators to flash between 'fault' and 'OK'.
Status Indicators	LED indicators provide for each control switch each load relay.
Lag Pump Delay	On power up, prevents simultaneous pump starts after a power failure.
Alarm Contact Output	10A @ 250VAC 10A @ 28VDC
Din Rail Mounting	And compression screw terminals
RS485 MODBUS® Port	For SCADA applications.



PH: 215-257-3412
FAX: 215-257-3416
EMAIL: sales@sigmacontrols.com