

SERIES 1500 MULTI FLOAT SWITCH



FEATURES

- 316SS Central Shaft
- 316SS or Buna Floats
- Positive Float Stops
- 1.5" or 2" NPT Process Connection
- Adjustable Connection Location
- Weather Proof Terminal Head
- 1, 2, 3, or 4 Float System
- 1 AMP @ 250 VAC/DC Switching Element

DESCRIPTION

Sigma Series 1500 Float Level Switches are specifically designed to meet the harsh conditions found in industrial, municipal, environmental and machine level control applications.

Available with up to four (4) level stages, the Series 1500 utilizes hermetically sealed reed switches actuated by a magnetic embedded in the float. Floats are restricted in their movement by positive float stops.

A Nema 4X weatherproof head contains a screw terminal barrier strip for field connections.

Floats are provided as standard in 316SS or Buna N, however, many other non-metallic materials are available as special order.

1-1/2" or 2" NPT process connections facilitate ease of installation in tanks, drums or sight glass.

Multiple stage independent switches permit both pump control and alarm functions to be carried out by a single switch assembly, easily installed through a tank top mounted fitting.

SERIES 1500 MULTI FLOAT SWITCH

SPECIFICATIONS

Switching Element:

Hermetically Sealed Reed Switch
Rated @ 1A @ 250VAC/DC

Construction:

316SS Shaft, Brass Unions, (SS Optional)
C.S. Process Connection (SS Optional)
Ryton Terminal, Weatherproof Head

Float Construction:

316SS, Buna 'N'

Electrical Connections:

Screw Terminal Barrier Strip in Ryton Head,
1/2" Conduit Connection

Pressure Rating:

150 PSI Max.

Temperature Rating:

450° F

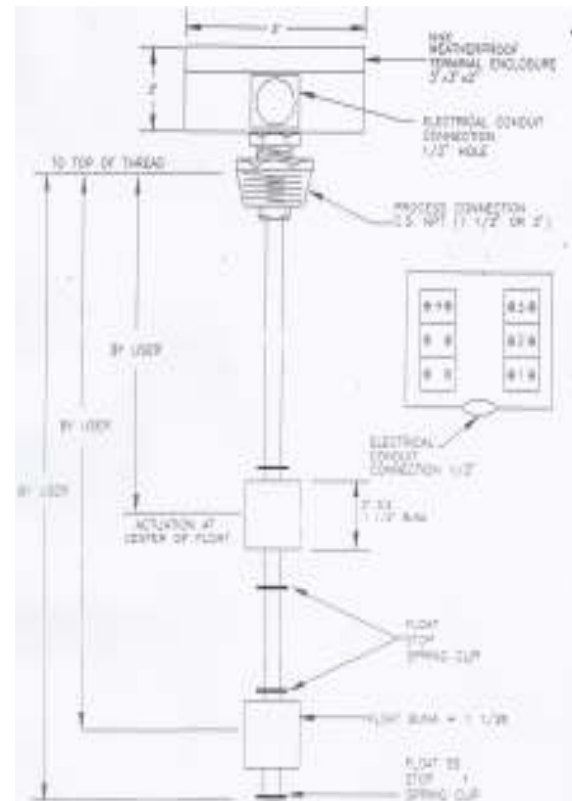
ORDERING INFORMATION

Model	No. of Floats	Float Mat'l
1501S	1	316SS
1502S	2	316SS
1503S	3	316SS
1504S	4	316SS
1501B	1	BUNA 'N'
1502B	2	BUNA 'N'
1503B	3	BUNA 'N'
1504B	4	BUNA 'N'

APPLICATIONS

Tank Level Alarms
Pump Control
Cooling Tower Basins
Effluent & Holding Tanks
Condensate Tanks
Sump Alarm and Control
Drum Level Alarm
Water Heaters

DIMENSIONS



Sigma Controls, Inc.
PROCESS CONTROLS AND INSTRUMENTATION

217 S. Fifth Street, Perkasie, PA 18944
PH: 215-257-3412 FAX: 215-257-3416

VISIT OUR WEBSITE SIGMACONTROLS.COM