

## **SERIES 8000MP STAINLESS STEEL MICROPROCESSOR BASED SUBMERSIBLE LEVEL SENSOR**



### **FEATURES**

- Σ Accuracy  $\pm 0.1\%$  Total Errors
- Σ Analog 4/20MA and/or Digital Output (MODBUS®)
- Σ Ranges up to 350 FT/WC Available
- Σ Heavy Wall Polyurethane Cable
- Σ No Vent Tube
- Σ Integral Surge Protection
- Σ Up to 128 Units on a Single Cable
- Σ Data Highway
- Σ 19.2K BAUD Data Transmission
- Σ Only 1 Inch Overall Diameter
- Σ Fully Repairable
- Σ Field Calibrateable

The Sigma 8000MP Series, submersible level transmitter offers unparalleled performance in a small rugged stainless steel enclosure. Utilizing an ultra stable, process isolated, piezo resistive sensor and a state of the art microprocessor which permits extensive compensation routines. The resultant assembly provides the user outstanding performance, long term stability and several digital transmission output options along with the industry standard 4/20MA current loop.

Totally networkable and compatible with the extensive line of Sigma 'Myriad' control devices, the Model 8000MP represents the ultimate in user flexibility. Ranges available – (0-12 to 0-350 Ft. WC).

**VISIT OUR WEBSITE AT [SIGMACONTROLS.COM](http://SIGMACONTROLS.COM)**

### **ENGINEERING FEATURES**

- Σ Solid State Microprocessor Design
- Σ Long Term Stability
- Σ Excellent Performance  $\pm 0.1\%$  Total Error
- Σ 316SS Body
- Σ 316SS Diaphragm
- Σ Cable System Integrity
- Σ Fully Temperature Compensated 0-50°C
- Σ Field Calibrateable
- Σ Integral Transient and Surge Protection
- Σ Small Rugged Package Withstands Severe Environments
- Σ No Vent Tubes or Desiccants Required
- Σ 4/20MA Analog and/or Digital Outputs
- Σ Standard MODBUS® RTU
- Σ Digitally Compatible with all Sigma 'Myriad'
- Σ Level and Pump Controllers
- Σ Fully Repairable

**SERIES 8000MP STAINLESS STEEL  
MICROPROCESSOR BASED SUBMERSIBLE LEVEL SENSOR**

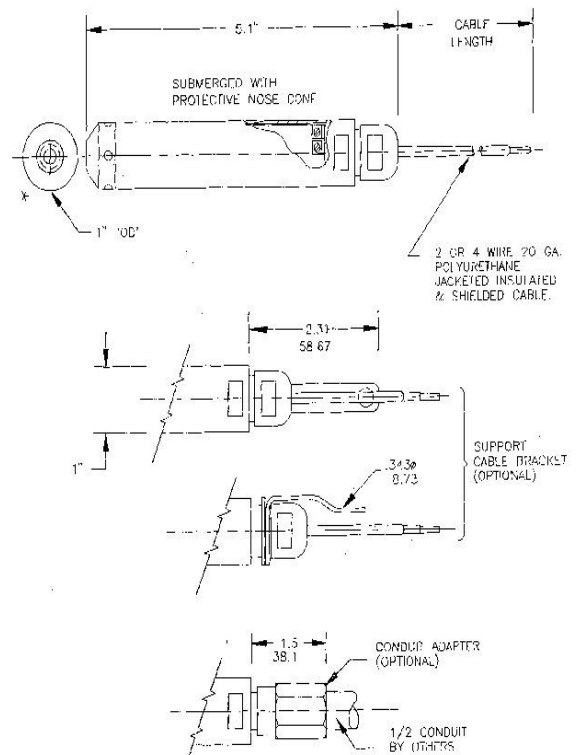
**SPECIFICATIONS**

Ranges	Ft. Water, 0/2, 0/7, 0/12, 0/23, 0/35, 0/115, 0/230, 0/600 (Custom calibration at no charge.)
Pressure (PSIG)	1, 3, 5, 10, 15, 50, 100, 300 other ranges available, consult factory.
Thermal Limits	Maximum Operating: -40°C/120°C (-40°F/248°F)
Compensated	0°C/50°C (-32°F/122°F)
Temperature Effects	± 0.25% output span within compensated range.
Accuracy	= ± 0.1%
Input/Output	15-45 VDC/4-20MADC/Digital
Electrical Connection	Attached four wire 20GA direct burial polyurethane jacketed cable.
Cable Color Guide	Black (-) Red (+) Power Blue Digital Output 'B' Yellow Digital Output 'A'
Process Connection	Protective Nose Cone for direct submergence in liquids
Materials of Construction	316SS body, Buna N 'o' Ring, Neoprene grommet, 316SS diaphragm, polyurethane jacketed cable.
Weight	(without cable) 8 oz.

**ORDERING INFORMATION**

MODEL	8000MP = 316SS Body
RANGES	001 = 0/1 PSIG = 0/2 FT WC 003 = 0/3 PSIG = 0/7 FT WC 005 = 0/5 PSIG = 0/12 FT WC 010 = 0/10 PSIG = 0/23 FT WC 015 = 0/15 PSIG = 0/35 FT WC 050 = 0/50 PSIG = 0/115 FT WC 100 = 0/100 PSIG = 0/230 FT WC Higher ranges available, consult factory.
OUTPUT	1 = 4/20MA 2 = 4/20MA and MODBUS®
MATLS OF CONST	316SS Body, 316SS Diaphragm, Buna N 'O' Rings,
FILL LIQUID	DS = Silicone 200 Fill Liquid
OPTIONS	SB = Cable Support Bracket CD = 1/2" Conduit Adapter DC = TVSS 4/20MA Surge Protection WC = Stainless Steel Support Cable (Please Specify)
CABLE LENGTH	Specify Length in Feet
EXAMPLE	8000MP- 015-1-DS-SB-50

**DIMENSIONS**



**CONSTRUCTION**  
BODY & NUT: 316SS  
NOSE: PVC STANDARD

**Sigma Controls, Inc.**  
PROCESS CONTROLS AND INSTRUMENTATION

**TELEPHONE: 215-257-3412**  
**FAX: 215-257-3416**  
**EMAIL: sales@sigmacontrols.com**

8000MP 062524