

The Boca

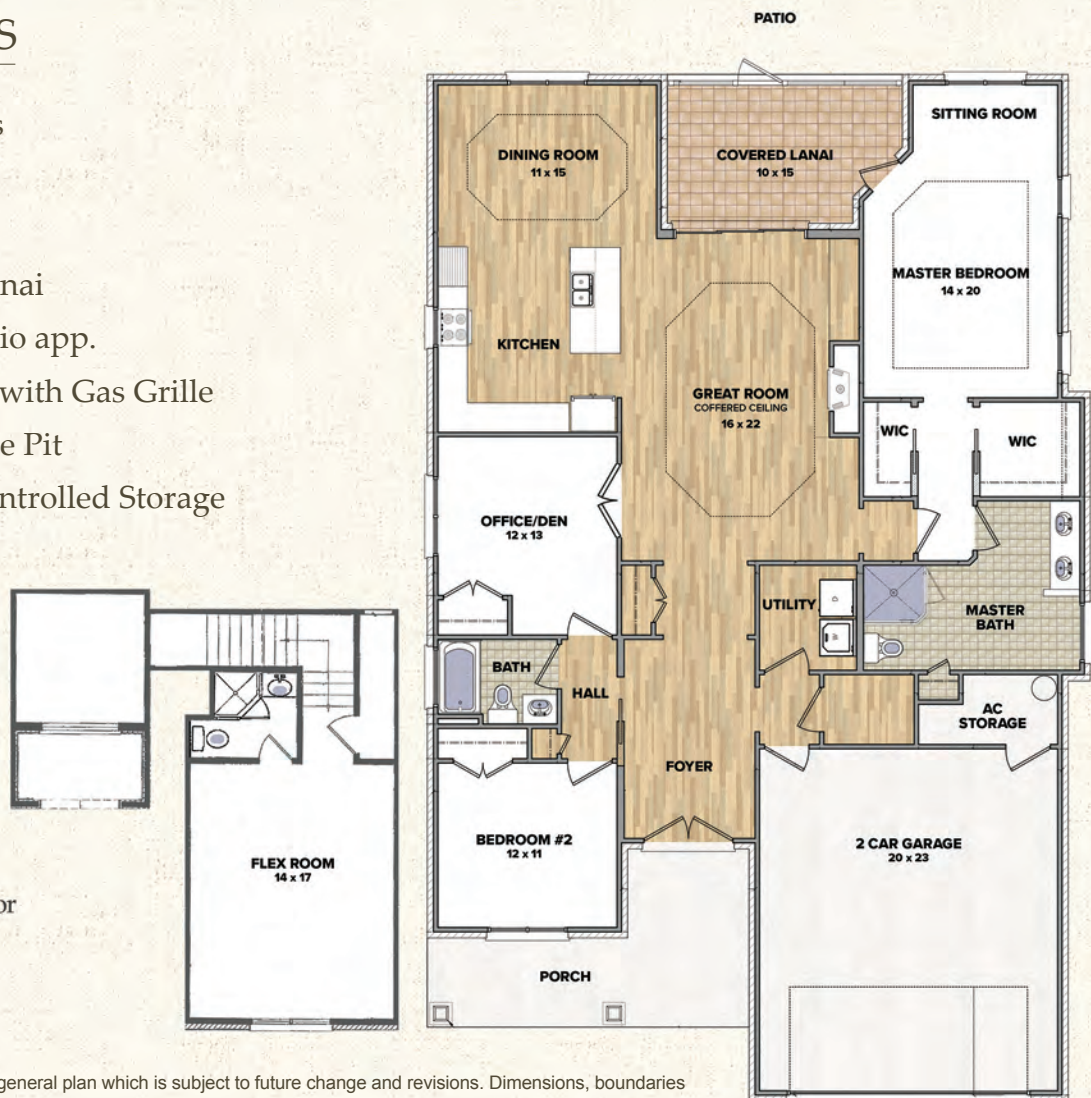


2,350 Heated Sq. Ft.
2,500 Sq. Ft. with Sun Room



FEATURES

- 3 Bedrooms
- 2 Baths
- Fireplace
- Covered Lanai
- Grilling Patio app.
10ft. x 10ft. with Gas Grille
and Gas Fire Pit
- Climate-Controlled Storage



This floor plan illustrates a general plan which is subject to future change and revisions. Dimensions, boundaries and position locations are for illustrative purposes only and are not necessarily intended to be exact.

TURTLE BAY OF SOUTHPORT

WILMINGTON



SOUTHPORT



LEGEND

- Model
- Mail Kiosk
- Community Gazebo
- Walking Trail



This is an artist rendering for illustrative purposes only. Features and amenities are currently proposed and subject to change without notice.