

# Island Captiva

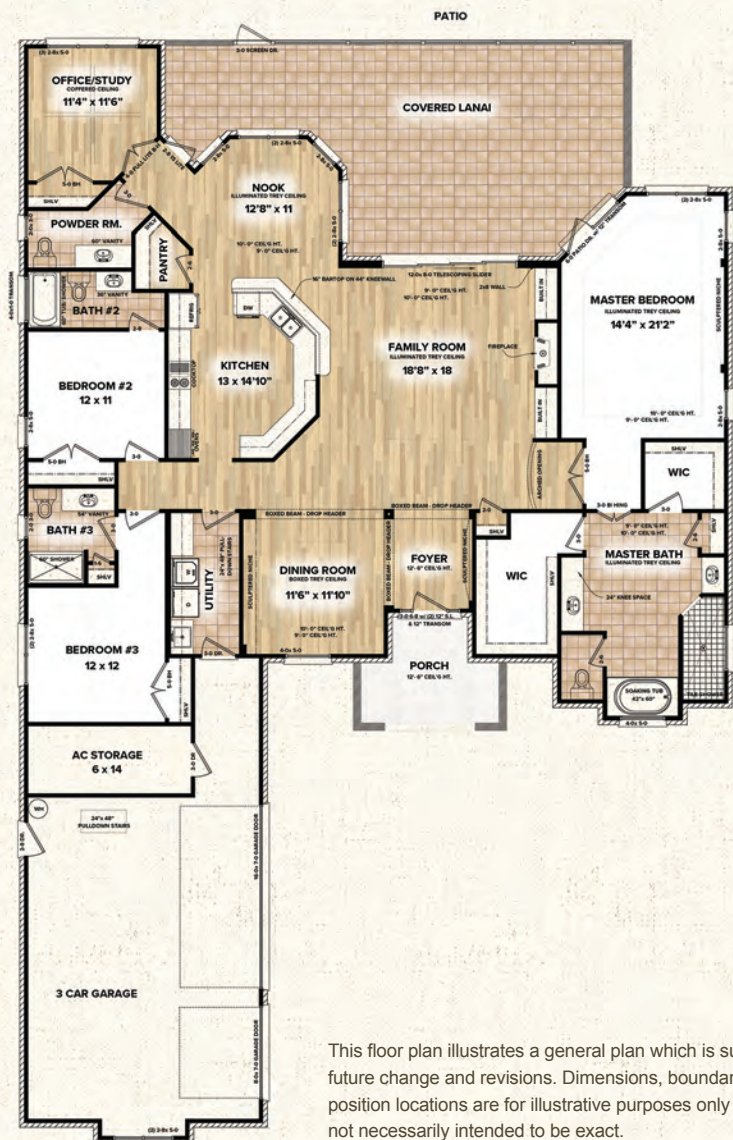


2,900 Heated Sq. Ft.



## FEATURES

- 3 Bedrooms
- 3.5 Baths
- 3 Car Garage
- Formal Dining
- Breakfast Nook
- Covered Lanai
- Fireplace
- Grilling Patio app.  
10ft. x 10ft. with Gas Grille  
and Gas Fire Pit
- Climate-Controlled Storage



This floor plan illustrates a general plan which is subject to future change and revisions. Dimensions, boundaries and position locations are for illustrative purposes only and are not necessarily intended to be exact.



# TURTLE BAY OF SOUTHPORT

WILMINGTON



SOUTHPORT



**LEGEND**

- Model
- Mail Kiosk
- Community Gazebo
- Walking Trail



This is an artist rendering for illustrative purposes only. Features and amenities are currently proposed and subject to change without notice.