



ADK GRUP

ELECTRIC INDUSTRY AND TRADE INC.

www.adkelektrik.com.tr



“From Solar To Efficient Future”

REFERENCES

 **arçelik**

CW  **Enerji**

 **ALFA**[®]
SOLAR ENERJİ


SCHMID PEKINTI AS
ENERGY

Jinko *Solar*


solar TURK
ENERJİ


ELIN


HUAWEI

ABB

Growatt

SUNGROW 

K A C O 
new energy.

 **ASTOR**[®]


EAE
TECHNOLOGY

STS **GROUP**

Schneider
Electric

 **inotel**

 **NAK**
K A B L O

E/NTES

 **Nexans**


öznur kablo

STÄUBLI


HES[®]
KABLO



Daima
yüksek kalite
standartı

ADK Group Electric Inc. has been operating in the field of electrical contracting works since 2003. In many regions of our country, Ongrid and Offgrid Solar Power Plants Installation, EPC Transformer Plant Installation, ENH Installation, Smart Building Solutions, Factory Interior Installation, Lighting and Camera Systems, Automation Systems, Transformer Plant Maintenance and Repair, GES Plant Maintenance and Repair, Lightning Rod Installation, Lightning Rod Testing and Measurements, GES Supported Agricultural Irrigation Solutions.

Our company evaluates and analyzes the demands of its customers in the best way and completes the promised work with its professional staff and the best equipment without sacrificing quality. Our technical support and maintenance services continue for 2 years after our turnkey projects.

ADK Group Electric Inc. aims to be among the reliable companies of our country in today's business world where trust is at the forefront, and to provide the best service to its customers and its country with its professional staff who follow innovations and technology and attach importance to R&D studies. Quality in the works within the scope of our fields of activity is our first priority for timely delivery and customer satisfaction and trust.

ADK Group Electric Inc. consists of an experienced team, each specialized in their own field. It fully responds to the requests of its customers with first class workmanship, materials and assembly. In addition, our company fulfills the services it undertakes in accordance with the current relevant laws and regulations with a highly successful, good infrastructure in operation and maintenance.

- ONGRID OFFGRID GES INSTALLATION WORKS
- OG-AG ELECTRICAL CONTRACTING
- ENH INSTALLATION AND DUMPING WORKS
- GES SUPPORTED AGRICULTURAL IRRIGATION WORKS
- ENVIRONMENTAL LIGHTING
- PLAN, PROJECT AND CONSULTANCY SERVICES
- AUTOMATION SOLUTIONS
- STEP-UP TRANSFORMER INSTALLATIONS
- COMPENSATION SYSTEMS
- CABLE TRAY AND CABLING SERVICES
- TRANSFORMER PLANT MAINTENANCE AND REPAIR SERVICES
- GES PLANT MAINTENANCE AND REPAIR SERVICES
- GROUNDING AND PARATONER FACILITIES
- TRANSFORMER INSTALLATIONS FOR AGRICULTURAL IRRIGATION

Kadirli / Osmaniye



Kadirli Organized SPP / 992kWp

Seyhan / Adana



Toyota Plaza Mıçı SPP / 288kWp

Yüreğir / Adana



Ramazanoğlu SPP / 597,87kWp

Akdeniz / Mersin



Serven SPP / 295,2kWp

Kadirli / Osmaniye



Multisistem SPP / 308kWp

Kadirli / Osmaniye



Nika SPP / 240,24kWp

Seyhan / Adana



Ölke SPP / 401,12kWp

Seyhan / Adana



Orbaç SPP / 288,02kWp

Yüreğir / Adana



Kuşcuoğlu SPP / 304kWp

Sarıçam / Adana



Tayftar Agriculture SPP / 174,4kWp

Kadirli / Osmaniye



Dal Kereste SPP / 148,46kWp

Kadirli / Osmaniye



LCW SPP / 76,44kWp

Kadirli / Osmaniye



Yüksel 1 SPP / 66,88 kWp

Kadirli / Osmaniye



Yüksel 2 SPP / 180,39 kWp

Kadirli / Osmaniye



Yüksel 3 SPP / 52,32kWp

Karataş / Adana



Akdemir SPP / 73,8kWp

Karataş / Adana



Terzi SPP / 73,57kWp

Sarıçam / Adana



Ales Agricultur SPP / 50,5kWp

Kadirli / Osmaniye



JNR 18MVA Transformer Plants

Tufanbeyli / Adana



Fernas 7.5MVA Transformer Plants

Kadirli / Osmaniye



Emta 7MVA Transformer Plants

Yüreğir / Adana



Dimaks 3.83MVA Transformer Plants

Adama / Etiyopya



Sultan Family 6MVA Transformer Plants

Kozan / Adana



Green Enerji 1250kVA Transformer Plants

Tufanbeyli / Adana



Fernas Swallow ENH - 7 km

Bor / Niğde



Özler Swallow ENH - 8 km

Toroslar / Mersin



ADK SPP 3/0 ENH - 1.7 km

Yumurtalık / Adana



Ayvalık SPP 3/0 ENH - 4 km

Yumurtalık / Adana



Teoman SPP 3/0 ENH - 3 km

Adilcevaz / Bitlis



Ala SPP 3/0 ENH - 5.6 km

Seyhan / Adana



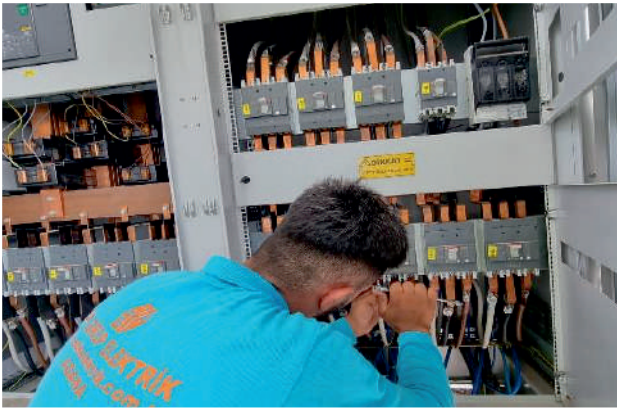
SPP Thermal Camera Controls

Kadirli / Osmaniye



Inverter Tests and Measurements

Kadirli / Osmaniye



SPP Panel Maintenance and Controls

Kadirli / Osmaniye



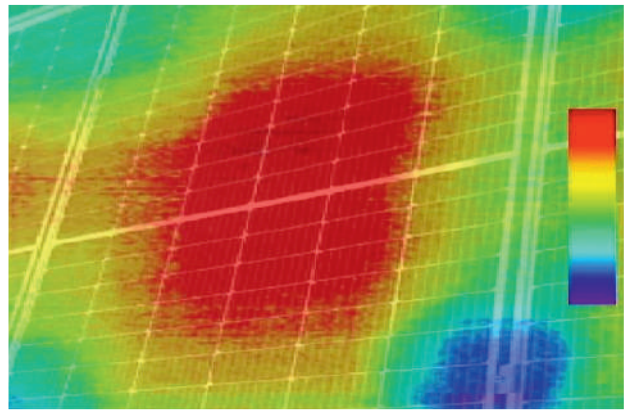
SPP Panel Measurement and Controls

Kadirli / Osmaniye



Project Compliance and Controls

Kadirli / Osmaniye



Hotspot Controls

Sarıçam / Adana



Transformer Cycle Ratio Measurements

Kadirli / Osmaniye



Harmonic Measurements and Tests

Kadirli / Osmaniye



Transformer Winding Resistance and Megger Insulation Test

Merkez / Niğde



Transformer Oil Analysis

Yüreğir / Adana



On-site Transformer Controls and Burnt Transformer Repair

Yüreğir / Adana



Transformer Oil Disposal Operations

Kozan / Adana



Green Interior Lighting Systems

Seyhan / Adana



İkizler Bridge Lighting Systems

Kozan / Adana



Green Energy Camera Systems

Kadirli / Osmaniye



JNR Exterior Lighting Systems

Kadirli / Osmaniye



JNR Interior Lighting Systems

Yüreğir / Adana



Reysaş Interior Lighting Systems

İskenderun / Hatay



İsdemir 17 Pole Perimeter Lighting

İskenderun / Hatay



İsdemir 17 Pole Perimeter Lighting

İskenderun / Hatay



İsdemir 17 Pole Perimeter Lighting

İskenderun / Hatay



İsdemir 17 Pole Perimeter Lighting

İskenderun / Hatay



İsdemir 17 Pole Perimeter Lighting

İskenderun / Hatay



İsdemir 17 Pole Perimeter Lighting

Tufanbeyli / Adana



Pole Mounted Transformer

Tufanbeyli / Adana



Pan Assembly Process

Tufanbeyli / Adana



Cable Pulling Process

Tufanbeyli / Adana



Motor Connect Cable Regulation

Tufanbeyli / Adana



Belt Conveyor Motor Connection

Tufanbeyli / Adana



Pole Mounted Transformer

1. **Kadirli Organized Directorate** (EPC) Land Type SPP 992kWp Kadirli/OSMANİYE
2. **Toyota Plaza Mıçı** (EPC) Roof Type SPP 288kWp Seyhan/ADANA
3. **Teyfik Ramazanoğlu** (EPC) Roof Type SPP 598kWp Yüreğir/ADANA
4. **Serven İnşaat** (EPC) Roof Type SPP 295kWp Akdeniz/MERSİN
5. **Multisistem Kayış** (EPC) Roof Type SPP 308kWp Kadirli/OSMANİYE
6. **Nika Makina** (EPC) Roof Type SPP 240kWp Kadirli/OSMANİYE
7. **Mustafa Ölke** (EPC) Roof Type SPP 401kWp Seyhan/ADANA
8. **Cahit Orbaç** (EPC) Roof Type SPP 288kWp Seyhan/ADANA
9. **Kuşcuoğlu Petrol** (EPC) Roof Type SPP 304kWp Yüreğir/ADANA
10. **Tayftar Tarım** (EPC) Roof Type SPP 174kWp Sarıçam/ADANA
11. **Dal Kereste** (EPC) Roof Type SPP 148kWp Kadirli/OSMANİYE
12. **Temel LCW** (EPC) Roof Type SPP 74.4kWp Kadirli/OSMANİYE
13. **Yüksel 1** (EPC) Roof Type SPP 66.9kWp Kadirli/OSMANİYE
14. **Yüksel 2** (EPC) Roof Type SPP 180kWp Kadirli/OSMANİYE
15. **Yüksel 3** (EPC) Roof Type SPP 52.3kWp Kadirli/OSMANİYE
16. **Ayhan Terzi** (EPC) Roof Type SPP 73.5kWp Karataş/ADANA
17. **Ales Tarım** (EPC) Roof Type SPP 50.5kWp Sarıçam/ADANA
18. **Baki Akdemir** (EPC) Land Type SPP 73.8kWp Karataş/ADANA
19. **Derinsu Boru** (EPC) Roof Type SPP 93.6kWp Yüreğir/ADANA
20. **İrfan TARHAN** (EPC) Land Type SPP 257kWp Güllüce/NİĞDE
21. **MMK Metalurji** (Subcontractor) Roof Type SPP 1.44MW Dört Yol/HATAY
22. **Palmiye Dokuma** (Subcontractor) Roof Type SPP 2.4MW Sarıçam/ADANA
23. **Adawall** (Subcontractor) Roof Type SPP 1.27MW Sarıçam/ADANA
24. **ABCO** (Subcontractor) Roof Type SPP 3.5MW Sarıçam/ADANA
25. **JNR Tekstil** (EPC) Building Type Trafo 18MVA Kadirli/OSMANİYE
26. **Fernas İnşaat** (EPC) Kiosk Type Trafo 7.5MVA Tufanbeyli/ADANA
27. **SKEC** (Subcontractor) Kiosk Type Trafo 13MVA Tufanbeyli/ADANA
28. **Emta Kablo** (EPC) Kiosk Type Trafo 7MVA Kadirli/OSMANİYE
29. **Dimaks Group** (EPC) Kiosk Type Trafo 3.83MVA Yüreğir/ADANA
30. **Sultan Family** (EPC) Building Type Trafo 6MVA Adana/ETİYOPYA
31. **Green Enerji** (EPC) Kiosk Type Trafo 1250kVA Kozan/ADANA
32. **Zahit Alüminyum** (EPC) Building Type Trafo 4.5MVA Sarıçam/ADANA
33. **Netafim** (EPC) Kiosk Type Trafo 1600kVA Sarıçam/ADANA
34. **Metsan Demir Çelik** (EPC) Kiosk Type Trafo 1250kVA Toprakkale/OSMANİYE
35. **Hipaş Boru** (EPC) Kiosk Type Trafo 1600kVA İncirlik/ADANA
36. **Tusan Yapı** (EPC) Multiple Type Trafo 4MVA Ceyhan/ADANA
37. **Doğru Tarım** (EPC) Kiosk Type Trafo 2MVA Karataş/ADANA
38. **Kadirli Organized Directorate** (EPC) Building Type Trafo 1250kVA Kadirli/OSMANİYE
39. **Sunar Mısır** (EPC) Building Type Trafo 2.5MVA Seyhan/ADANA
40. **Rubis Terminal** (EPC) Kiosk Type Trafo 1600kVA Dört Yol/HATAY
41. **Cevger Tavukçuluk** (EPC) Kiosk Type Trafo 1600kVA Ceyhan/ADANA
42. **MFC Makina** (EPC) Kiosk Type Trafo 1000kVA Sarıçam/ADANA
43. **Dayan Beton** (EPC) Kiosk Type Trafo 2000kVA Kilis OSB/KİLİS
44. **Beta Trafo** (EPC) Building Type Trafo 2.5MVA Adana OSB/ADANA
45. **Starpak** (EPC) Building Type Trafo 1430kVA Yüreğir/ADANA
46. **Geylaniler Petrol** (EPC) Multiple Type Trafo 600kVA Yüreğir/ADANA

47. **Toyota Plaza Mıçı** (EPC) Mast Type Trafo 400kVA Seyhan/ADANA
48. **Serven İnşaat** (EPC) Mast Type Trafo 400kVA Akdeniz/MERSİN
49. **Ölke Tarım** (EPC) Kiosk Type Trafo 1000kVA Seyhan/ADANA
50. **Gezende Barajı** (Subcontractor) Multiple Type Trafo 5MVA Ermenek/KARAMAN
51. **Tekbaş Otomotiv** (EPC) Mast Type Trafo 400kVA Yüreğir/ADANA
52. **Fernas İnşaat** (EPC) Swallow ENH 7km Tufanbeyli/ADANA
53. **SKEC** (EPC) 1/0 ENH 11km Tufanbeyli/ADANA
54. **Özler Tarım** (EPC) Swallow ENH 8km Bor/NİĞDE
55. **Özler Tarım** (EPC) 3/0 ENH 8km Ulukışla/NİĞDE
56. **Gezende Barajı** (Subcontractor) Swallow ENH 7.5km Ermenek/KARAMAN
57. **Göktekin GES** (EPC) 3/0 ENH 3km Kulu/KONYA
58. **ADK GES** (EPC) 3/0 ENH 1.7km Toroslar/MERSİN
59. **Ayvalık GES** (EPC) 3/0 ENH 4km Yumurtalık/ADANA
60. **Teoman GES** (EPC) 3/0 ENH 3km Yumurtalık/ADANA
61. **Ala GES** (EPC) 3/0 ENH 5.6km Adilcevaz/BİTLİS
62. **Doğru Tarım** (EPC) Swallow ENH 5km Karataş/ADANA
63. **Kadirli Organized Directorate** (EPC) 3/0 ENH 1km Kadirli/OSMANİYE
64. **Düziçi GES** (EPC) Swallow ENH 1km Düziçi/OSMANİYE
65. **Adana ASKİ** (EPC) Swallow ENH 3km Karaisalı/ADANA
66. **Başkale GES** (EPC) 3/0 ENH 3.5km Van/BAŞKALE

- **Nato Liman Tesisleri** : LV-MV Line Stringing Work, Port Perimeter Lighting Systems
- **TEDAŞ Adana Bölge M.** : LV Network Improvement Works
- **TEDAŞ Niğde Bölge M.** : LV-LV MV Displacement Works
- **Emta Kablo** : Indoor & Outdoor Lighting Systems, Automation Systems
- **TEDAŞ Adana Bölge M.** : 54 Pcs Pole Installation, 14 Pcs Building Type Transformer Installation and ENH Plant 15kV-36kV Upgrade Study
- **TEDAŞ Adana Bölge M.** : 43 Pcs Substations, LV-MV ENH Displacement Works
- **MET İnşaat** : Alparslan Türkeş Boulevard Interchange Lighting Works
- **Dört Yol İnşaat** : City Hospital Highway Road and Intersection Lighting Works
- **Rubis Terminal** : 3/0 ENH Installation with 12/25 Concrete Poles, 13.5MVA DM Works, MV Internal Line Revision Works, 2.5MVA Transformer Replacement, 1.6MVA Step-Up Transformer Installation
- **Fernas İnşaat** : Pan & LV Cabling Works, Belt Conveyor Motor Connections, Pole & Kiosk Type Transformer Installation Works
- **İsdemir** : In Plant Led Lighting Plant, 17 pcs 35mt Polygonal Pole Lighting Plant, 6.3kVA MV Socket Installation Works and Crane Supply Line Drawing Works
- **JNR Tekstil** : Indoor & Outdoor Lighting Systems, Pan & LV Cabling Operations, Bus-Bar Systems, Fire Alarm Systems, Emergency Announcement System, Ofis Lighting Fancoil Automation System, Communication Systems
- **Green Enerji** : ADP & Compensation & MCC Panel Assembly Works, Indoor Outdoor Lighting Systems, Camera Systems, Fire Alarm Systems, Faraday Cage System, UPS Assembly and Installation Works, Lightning Rod Installation, Communication Systems
- **Mikron's** : 10MVA Transformer Maintenance, 15 MV Cell Maintenance
- **Petka Kalıp** : OG Cell Maintenance
- **Starpak** : Cold Storage Lighting Works, In Plant Pan and LV Cabling Works
- **Ölke Tarım** : Cold Storage Lighting Works, In Plant Pan and LV Cabling Works

"From Solar To Efficient Future"



www.adkelektrik.com.tr

"Produces Safe Solutions"

Tel : 0 322 346 10 58 Yenidoğan St. Sedir Yaprığı St. No:10/A Yüreğir/ADANA
E-Mail : adk@adkelektrik.com.tr www.adkelektrik.com.tr