

# PWC FRONT TRAILER BOW GUARD

## INSTALLATION INSTRUCTIONS



# PWC FRONT TRAILER BOW GUARD

## INSTALLATION INSTRUCTIONS

### What you will need:

- 1- 91% Isopropyl Alcohol  
(any brand)
- 2-Adhesion Promoter  
(included)
- 3-Microfiber Rag
- 4-Cleaner (any type)
- 5-Masking tape
- 6-Utility Blade
- 7-Marine silicone sealant (not included)



## STEP 1

Carefully clean the area where the part will be installed. Remove any dirt, wax, grease or ceramic coat on the front trailer eye hook area.



If you have wax, ceramic coat or any type of grease on your PWC, please follow the instructions of the product used to remove it.

## STEP 2



Clean with  
91%  
Isopropyl  
alcohol and  
let it dry.

## STEP 3

Grab the part. Now you need to mark the area where the part will be installed using 1-2" pieces of masking tape.



## STEP 4



Once the part is positioned, mark the edges with masking tape (use 2" pieces) and 4-5" pieces to hold the part in place, as shown in the picture.

Next, remove the part leaving just the masking tape as your guide

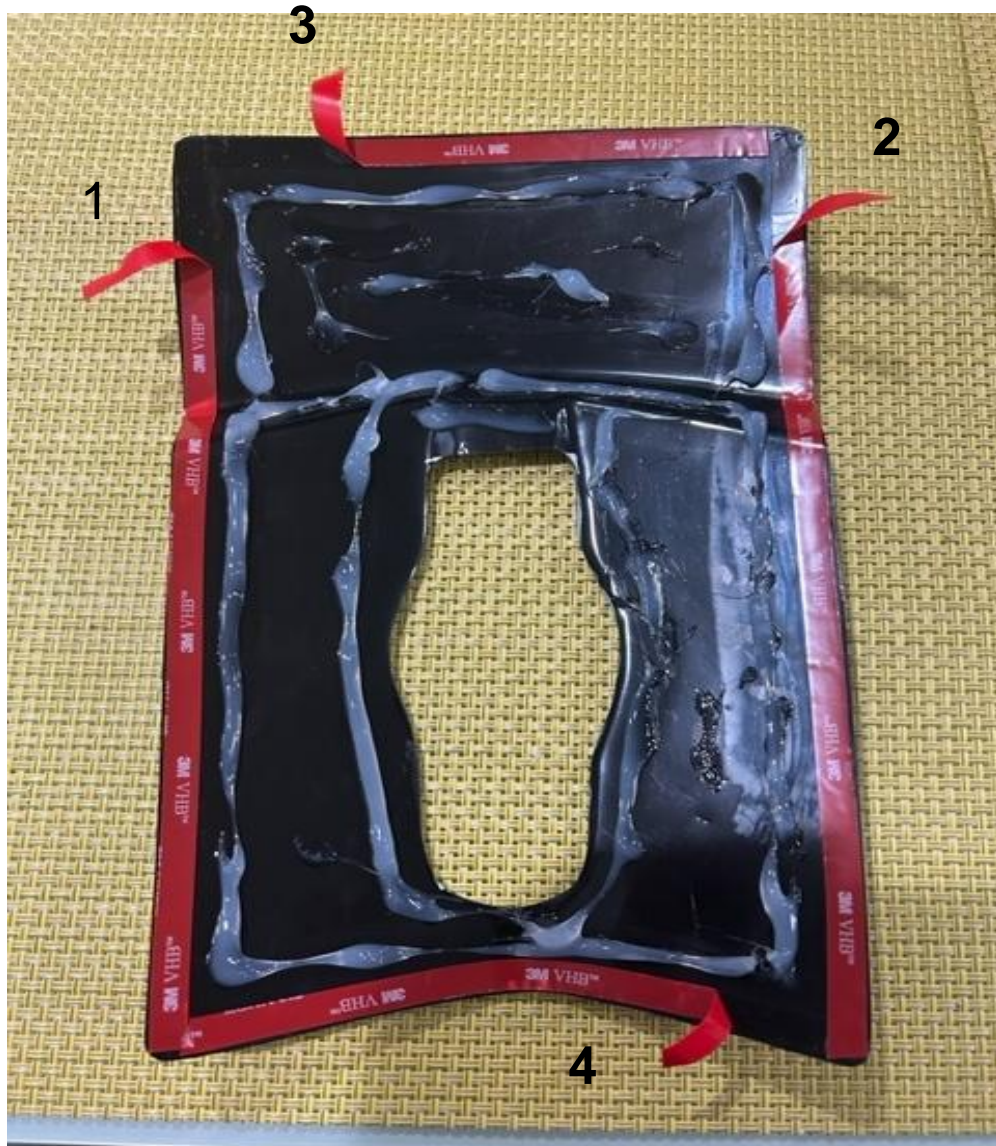
## STEP 5



Apply a layer of marine silicone sealant (not provided) to the area (leaving 1 ½” of separation from the 3M double sided marine tape already installed on the part) as shown in the picture.

The marine silicone sealant will provide an additional layer of strong lightweight bond to the PWC front trailer bow guard while being installed.

## STEP 6



Now proceed to peel off the pre-cut strips of 2" of each line of tape (as shown in the picture).

Leave the strips outwards, that way it will be easier to remove the whole strip of tape later by just pulling it.

**DO NOT PEEL OFF THE WHOLE STRIP!**



## STEP 7

Now, take the Adhesion promoter (provided) and apply it to the inside area where the part will be installed as shown in the pictures.



## STEP 8



Position the part starting by the bump and apply pressure there.

## STEP 9

Peel off the tape



Start with the left side.

Apply pressure on the part while peeling it off.

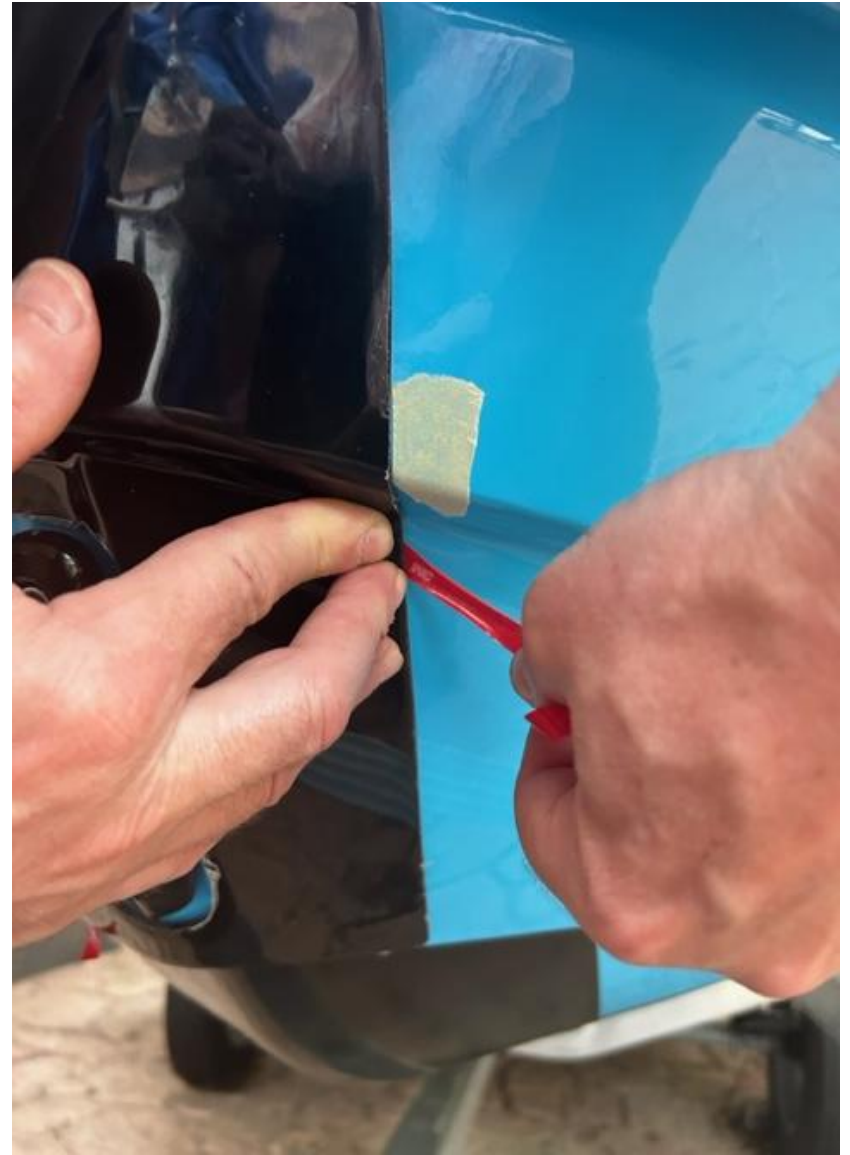
Be careful not to break the red strip.



**Peel off the top tape.**



Now, the right side



Peel off the bottom tape. Then, press firmly all over the part.



Remove the protective film.



**You are done!**



After install, please wait 72 hrs before going to the water so the adhesive can bond to the fullest according to the marine grade tape's manufacturing company and the marine silicone sealant used.