



PWC GUARD

INSTALLATION INSTRUCTIONS





PWC GUARD

INSTALLATION INSTRUCTIONS

**PLEASE DO NOT ATTEMPT TO INSTALL WITHOUT FOLLOWING
OUR INSTRUCTIONS!**

DO NOT RUSH THE PROCESS.

ALTHOUGH IT IS EASY, SHOULD BE DONE CAREFULLY IN ORDER TO OBTAIN THE BEST RESULTS.

The part was installed while the PWC was on the trailer.

We recommend to get somebody to help you since you are going to be working on the floor and its difficult to see all the angles of the part, that way you will avoid installation mistakes and issues.

No tools required, no complications, **just follow the steps.**

After install, please wait 72 hrs before going to the water so the adhesive can bond to the fullest according to the marine grade tape's manufacturing company.



PWC GUARD

INSTALLATION INSTRUCTIONS

What you will need:

- 1- 91% Isopropyl Alcohol
(any brand)
- 2-Adhesion Promoter
(included)
- 3-Microfiber Rag
- 4-Cleaner (any type)
- 5-Masking tape
- 6-Utility Blade
- 7-Marine silicone sealant (not included)





PWC GUARD

INSTALLATION INSTRUCTIONS

NOTE:

The part comes with a protective film.

You can either remove it at the beginning of the install or at the end.

Make sure to peel off a little strip either at the top or bottom as your guide if removed at the end.

STEP 1

A-Carefully clean the area where the part will be installed. Remove any dirt, wax, grease or ceramic coat on your PWC.



We used DAWN since the Wave runner was brand-new without any wax, silicone or ceramic coat.

If you have wax, ceramic coat or any type of grease on your PWC, **please follow the instructions of the product used** to remove it.

STEP 2

Then, clean with 91% Isopropyl alcohol and let it dry.



STEP 3

Grab the part. Now you need to mark the area where the part will be installed.



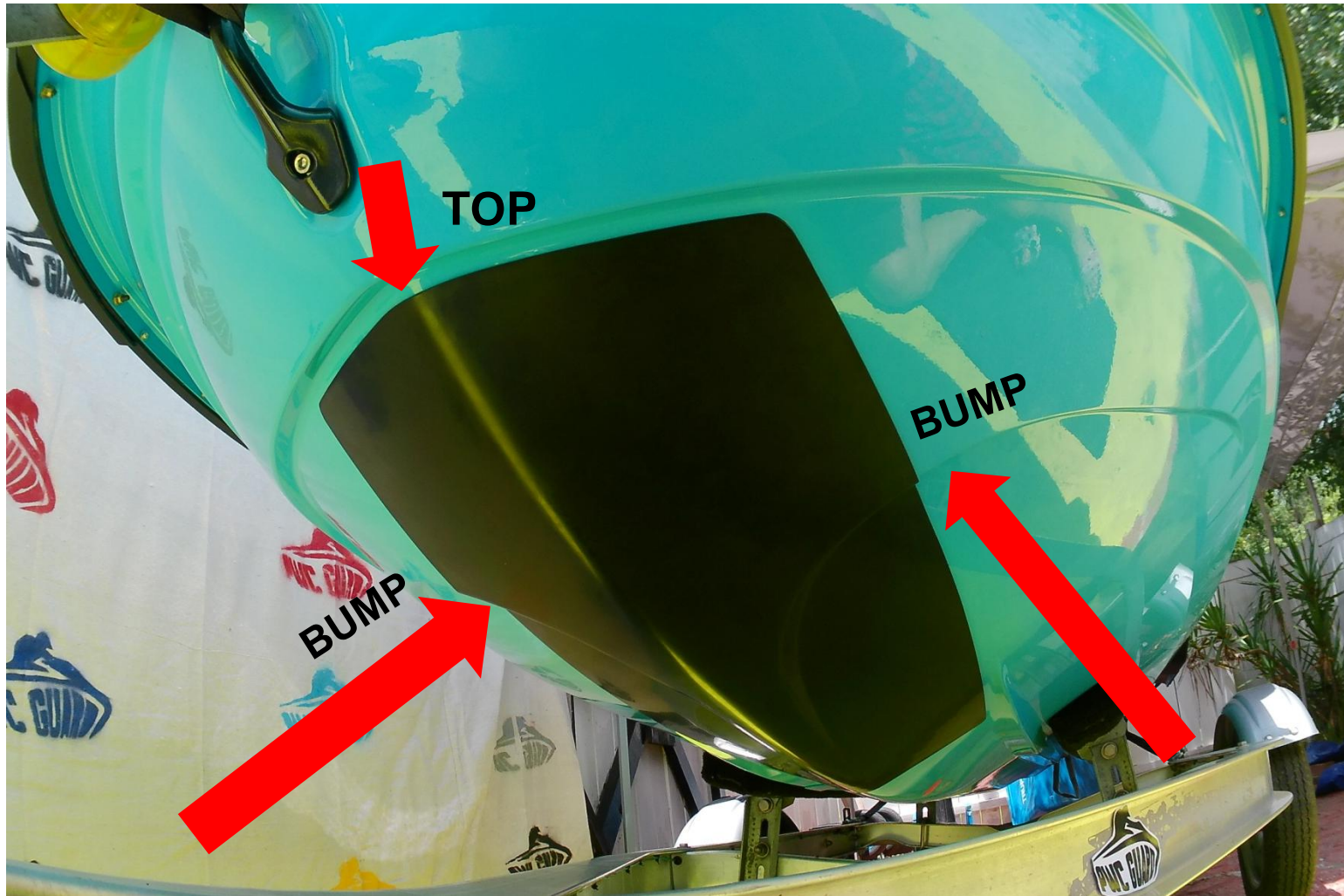
STEP 4

Warning: This is the most critical step of the install.

This step will give you the location where is going to be installed without issues. If you fail at this point, you will fail at the end too.

Get some help since you need to fit the part on the wave runner (at this point you can either remove the protective film or leave it until the end).

STEP 4



The part should sit at the bumps and top.

STEP 5



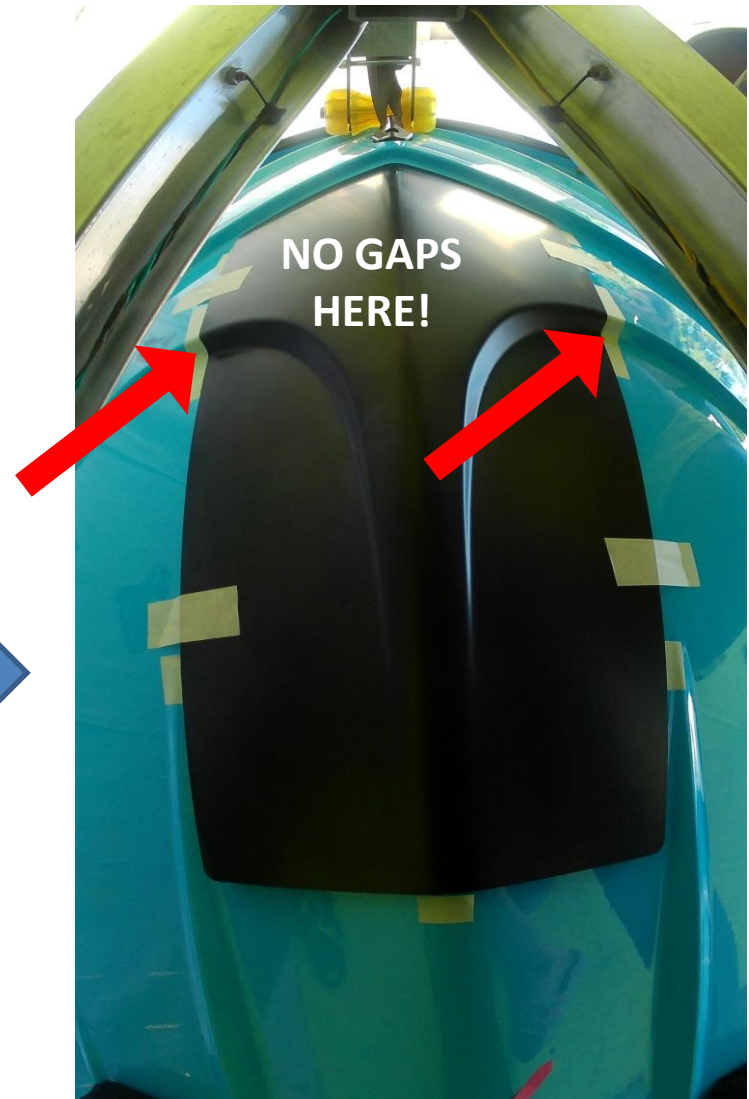
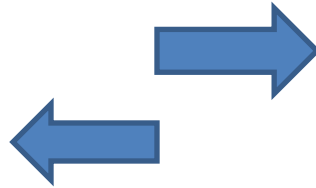
Once the part is positioned, mark the edges with masking tape (use 2" pieces) and 4-5" pieces to hold the part in place, as shown in the pictures)

STEP 5

Make sure the masking tape is off the edges of the part.

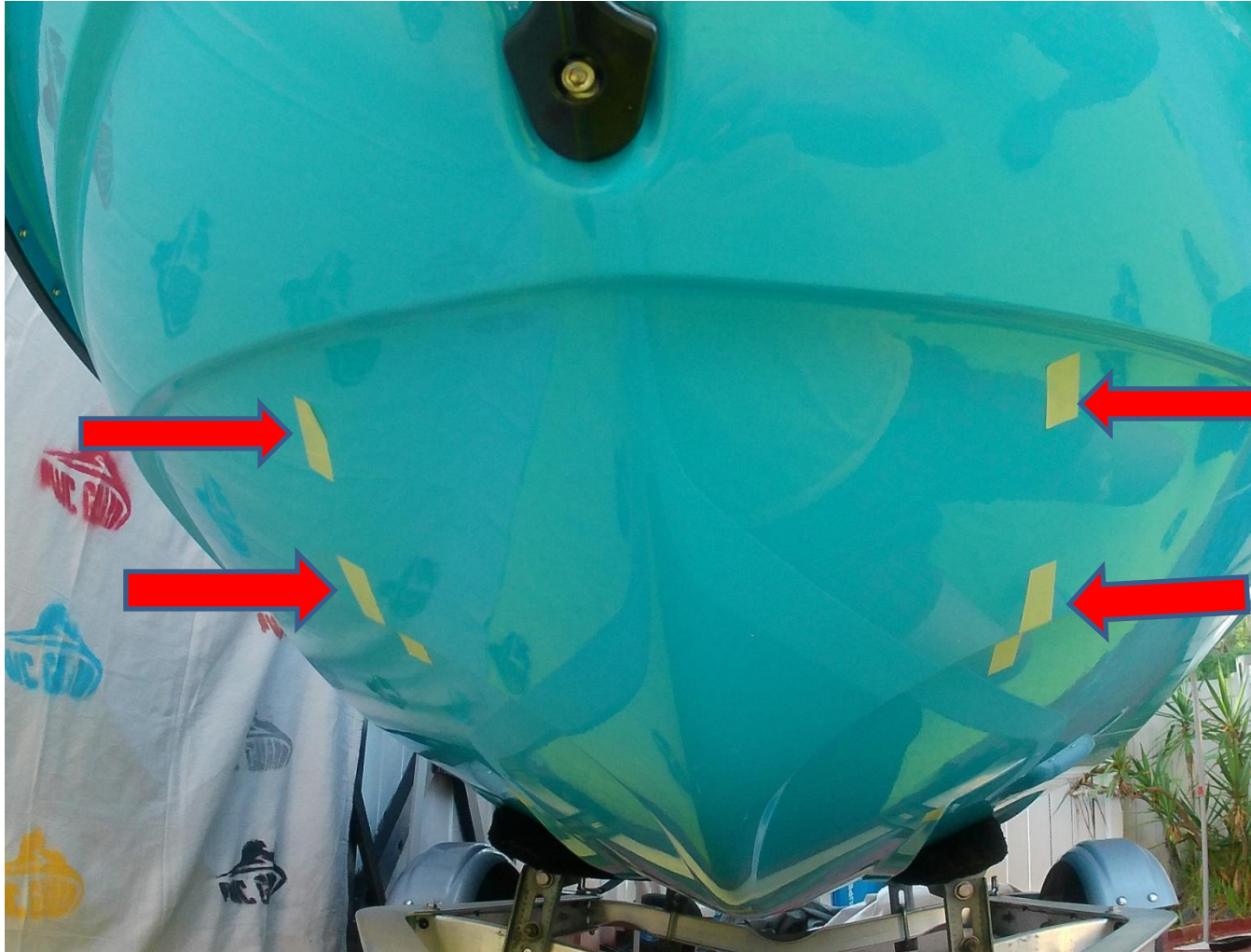


Should
look
like this



STEP 6

Next, remove the part leaving just the masking tape as your guide.



STEP 7



Clean again the area with 91% Isopropyl Alcohol to remove any dirt or grease from your hands.

Now proceed to peel off the pre-cuts strips of 2" of each line of tape (as shown in the picture).

Leave the strips outwards, that way it will be easier to remove the whole strip of tape later by just pulling it.

**DO NOT PEEL OFF THE
WHOLE TAPE!**

STEP 7

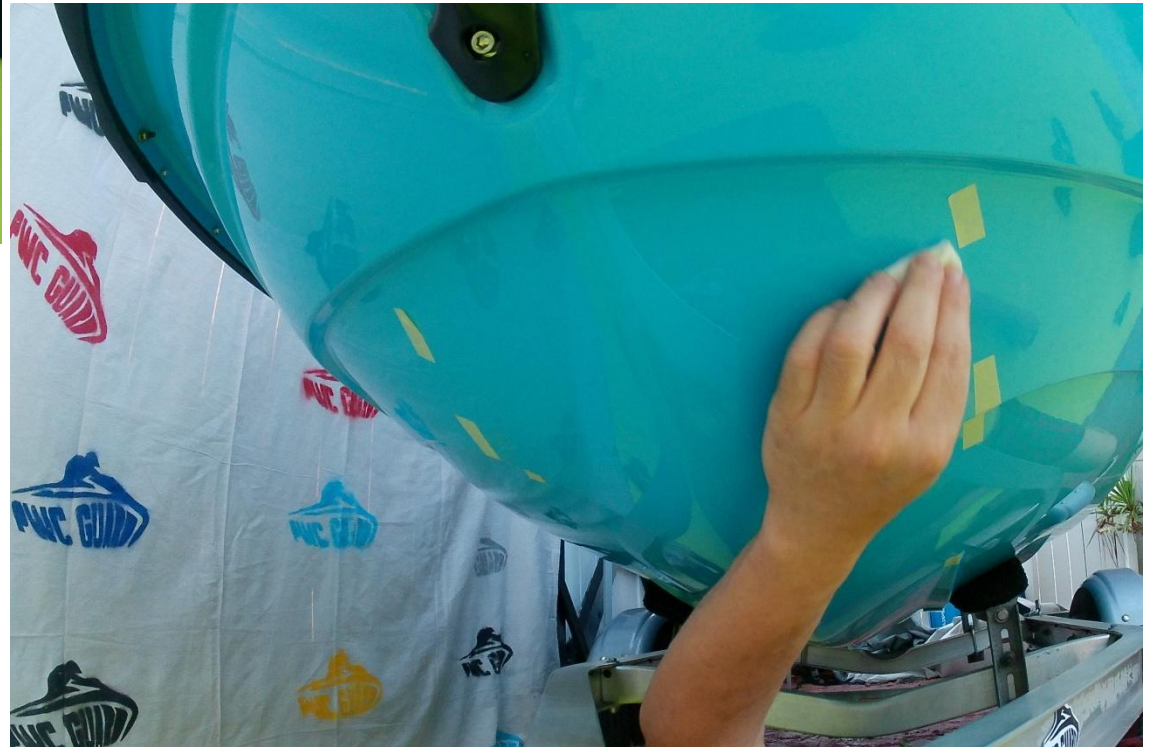


Once the part is completely clean, apply a layer of marine silicone sealant (not provided) to the area (leaving 1 ½" of separation from the 3M double sided marine tape already installed on the part) as shown on the picture.

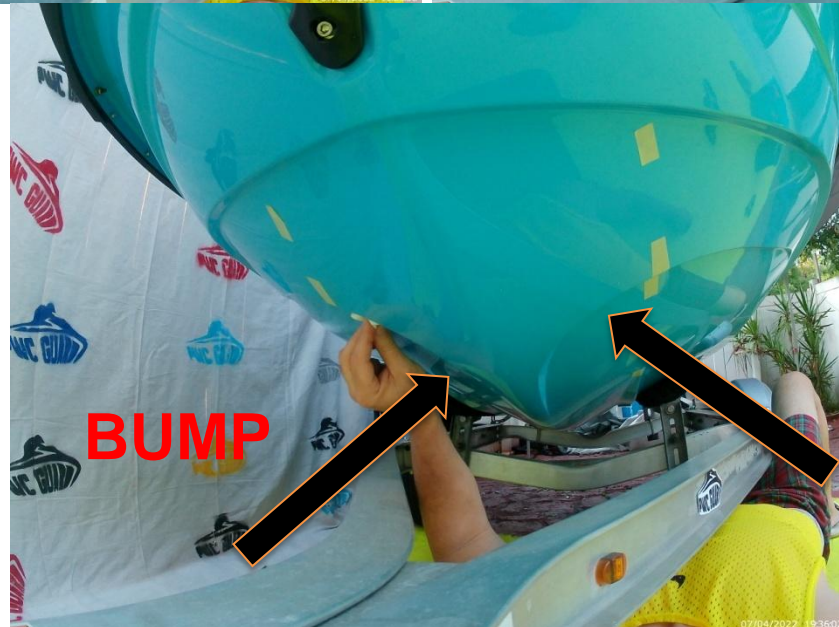
The marine silicone sealant will provide an additional layer of strong lightweight bond to the PWC guard while being installed.

STEP 8

Now, take the Adhesion promoter (provided) and apply it to the inside area where the part will be installed as shown in the pictures.

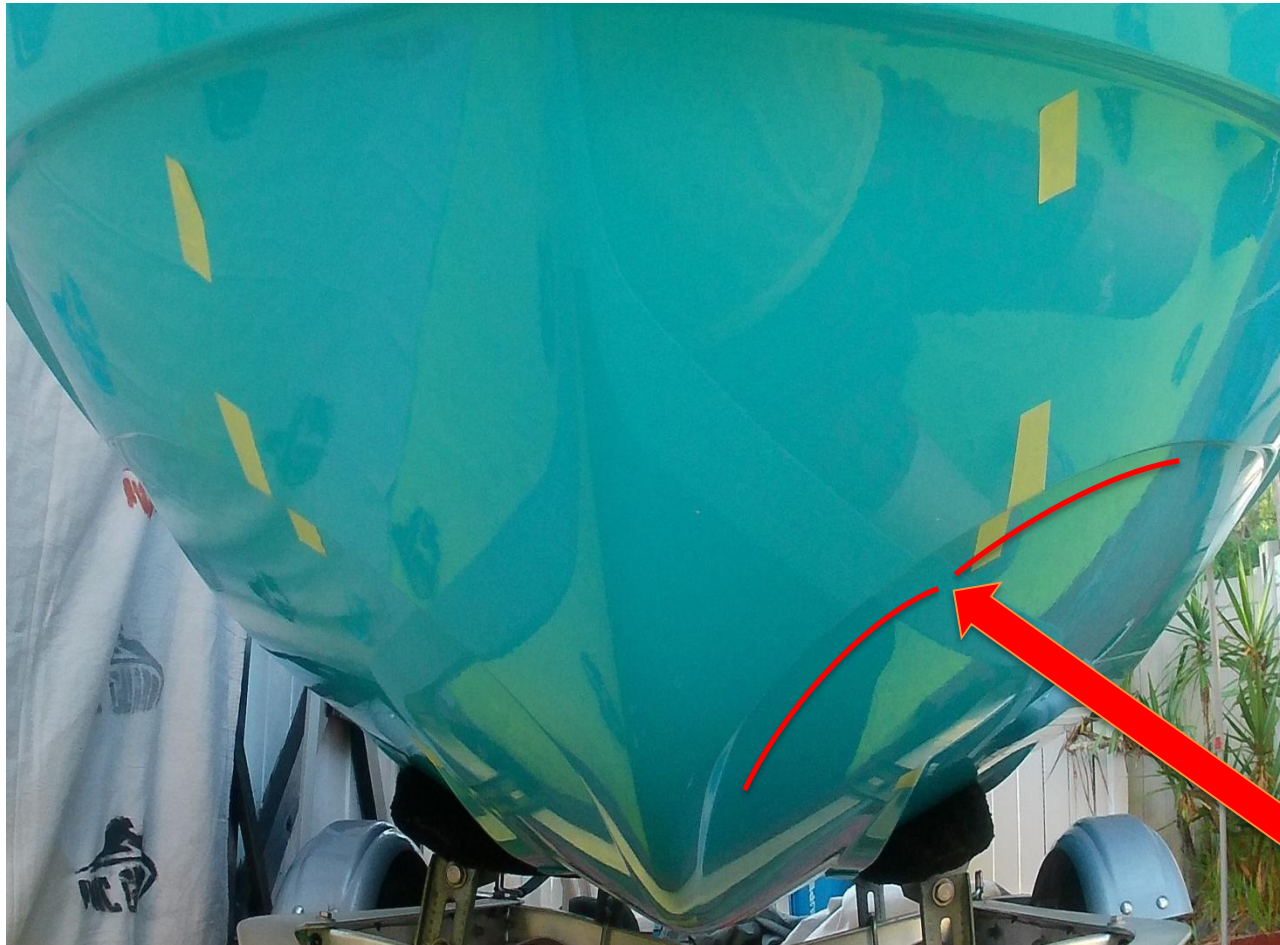


STEP 8



STEP 9

Proceed to finally attach the part using the “**BUMPS**” on the side of the hull of the wave runner as **your guide** to properly fit the part, **without applying any pressure**.



BUMP

STEP 10

WARNING:

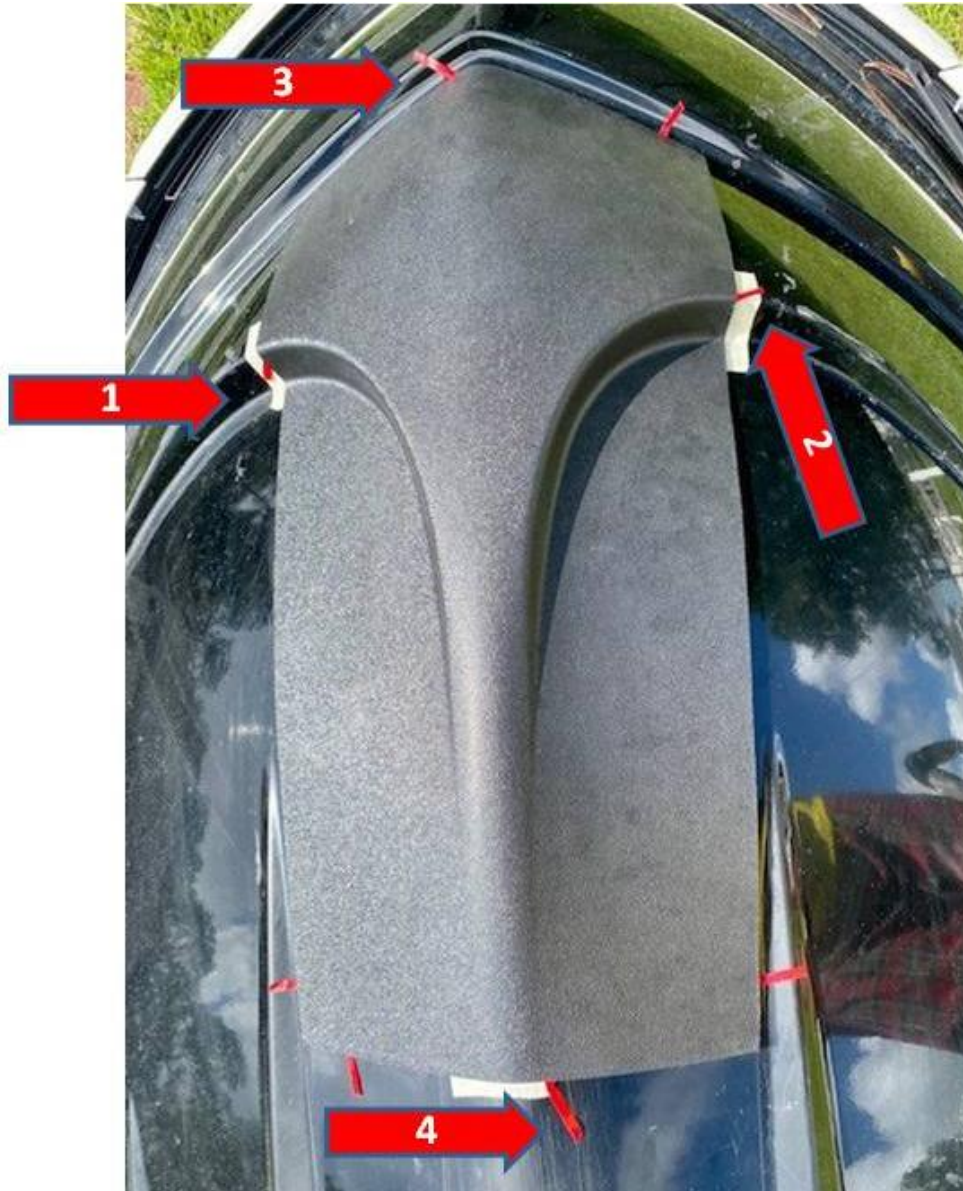
Be careful when you start installing the part.

This tape is very strong and you only got one shot at doing it correctly...otherwise you need to replace the tape on your own.



First, position the part $\frac{1}{2}$ " away from the BUMPS (as shown in this picture). The idea is not to attach it completely yet.

STEP 11



Make sure the peeled off strips of tape are not under the part but outside.

STEP 12



Once the part is aligned, push it forward at the bumps, so there is no room to move and make sure the ½" separation has been removed.

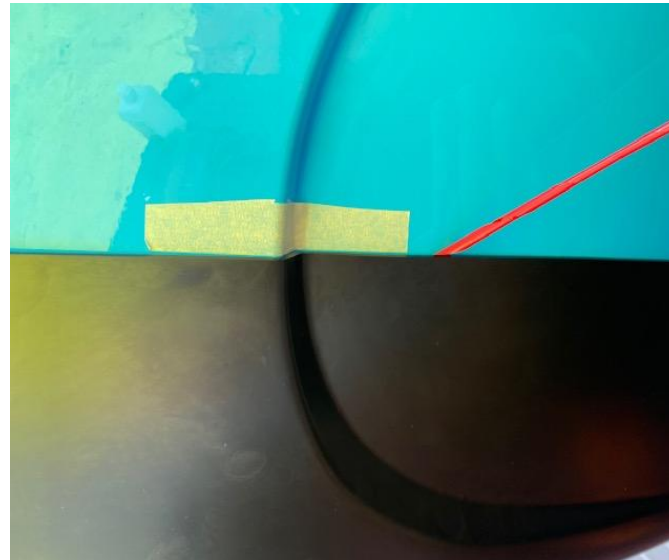
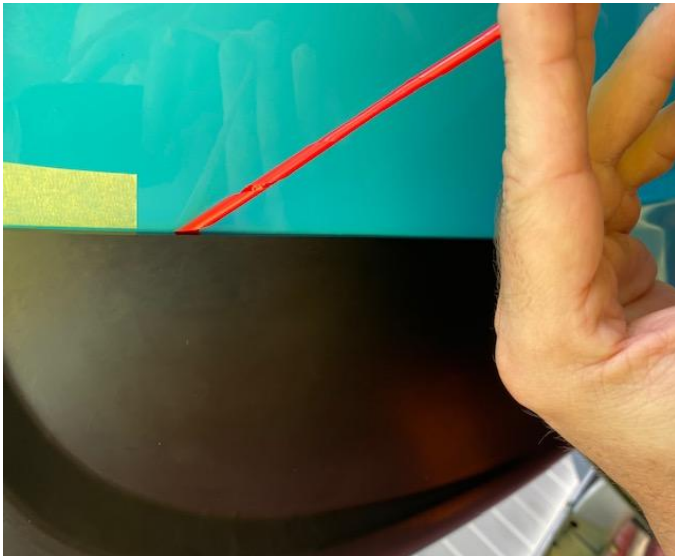
(leave the pre-cut strip of tape out!)

STEP 13

Continue with the top and bottom making sure there is no GAPS
(leave the pre-cut strip of tape out!)



STEP 13



Once the part is fitted and there is **absolutely NO GAPS**, start peeling off the tape **completely** in this order: Top, Bottom then sides and carefully apply pressure all over

YOU ARE DONE!

After install, please wait 72 hrs before going to the water so the adhesive can bond to the fullest according to the marine grade tape's manufacturing company and the marine silicone sealant used.

