

Message from The President



It's July, the beginning of a new Fiscal Year for LGC full of anticipation for exciting new ideas with a few new members on the Board. Being on the Board is such a gratifying way to contribute by influencing the discussions and decisions for projects and setting priorities for our collective benefits throughout the year. But there are so many other ways to contribute and it's our goal to get 100% participation from our members by volunteering on our Fundraisers and Standing Committee events. There are always tasks big and small that fit everyone's time constraints and life circumstances. We need your participation in our community service organization whether it's volunteering to weed the Blue Star Memorial Garden, at the Garden Walk, Fall Bulb Sale or being a part of any of our Standing Committees. We still have a few positions available to fill so please reach out if you're interested in being a Standing Committee Chair.

In the near term, we are **desperate** for volunteers at the Garden Walk. If you have yet to volunteer your time for any of our community initiatives, please contact Jana Wagner to sign-up to help make this important day run smoothly for the homeowners and attendees. In addition, buy a few tickets and bring friends and family to enjoy these creative gardens. It's so therapeutic to be outdoors enjoying the friendship of others and the beauty of these gardens and is also a great way to get unique ideas for your home.

Like in 2023, all Garden Walk volunteers are invited to gather for a celebration at a LGC members' home on the evening of July 20th.

July Happenings

Thursday, July 4, 2024
Lincolnshire Parade

9:00 am Lineup; 10:00 am Parade



Wear Your Butterfly Cape or LGC Apron

Saturday, July 20, 2024
'A Walk in The Shire' Garden Walk

10 am—3 pm



In This Issue

Message from The President
July Happenings
Fundraising
New LGC Officers for 2024-25
Message from the Editor
Libertyville Farmer's Market
LGC in The News
Downy Mildew of Cucurbits
Summer Field Trips
Inspirations
Future Farmers' Markets
Blue Star Memorial Garden Sign Posts
LGC Board of Directors

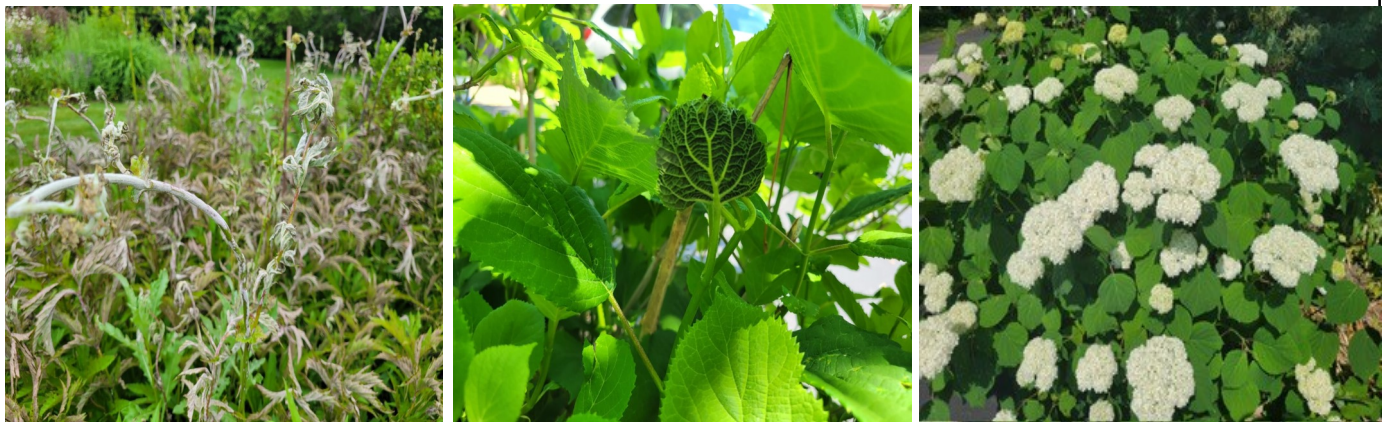
Message from The President

Since early spring I have been looking for the butterfly weed, *asclepias tuberosa*, that grew near our patio for a few years, this year it hasn't returned. The last few years I enjoyed the daily visits from many butterflies and humming birds and the bright orange flowers and am missing them this year. Native plants are really perplexing as they seem to grow well then disappear then suddenly show up elsewhere in the garden. Luckily, I bought a couple more milkweed plants from our plant sale to replace this plant gone missing.

I direct sowed a couple of different types of milkweed seeds in the fall a couple years ago and recently while weeding I discovered several plants where I planted swamp milkweed, *asclepias incarnata*. They stealthily sprouted last year but since they didn't flower, they were difficult to distinguish. This year they are flowering which is making it easy to identify these treasures. So far this summer, I haven't seen many butterflies and only a few hummingbirds but hopefully the monarchs will find these milkweed plants. I will plant more seeds in the fall and label them more diligently so they don't get weeded. I'm so thrilled to find these plants and have success with direct sowing the seeds.

Another challenge I encountered in the garden was the recent rains caused the Queen of the Prairie, *filipendula rubra*, to develop mildew (below left). I cut the affected area off, and wonder if those plants will bloom this year. A different plant that had a problem was the Annabelle hydrangea. I described the leaves sewn together to Helen Wilson and a few other garden members and they identified the pest as Hydrangea Leaf-tier Moth (below center). I cut off all of the affected leaves and the Annabelles are rewarding me with beautiful blooms (below right). I hope that the leaf-tier caterpillar won't be back next spring, I learned that the eggs from the moth live in the soil below the plant. If any one has a good solution or ideas on how to prevent them from coming back next spring, please let me know.

Finally, I can't overemphasize how much fun it would be to see everyone at the garden walk and how much I'm looking forward to seeing all of you there helping our club make our Walk in "The Shire", a great success. Don't forget to purchase tickets for a few friends and spend the day together.



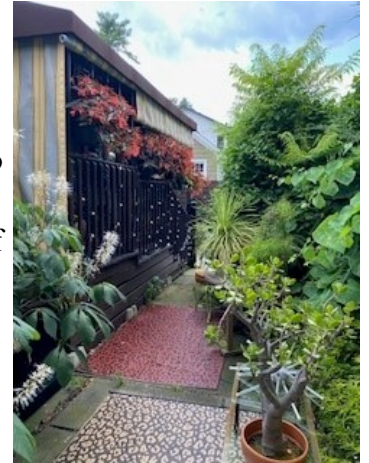
In friendship,

Kathleen Abdo

Fundraising

A Walk In “The Shire”

The big day is almost here. If you have signed up to help before July 20th, THANK YOU, and if you have signed up to help on that day, THANK YOU. However, we still have 9 volunteer spaces open that need to be filled. One volunteer is needed to pick up the signs at 2:30 pm. The others are to sit at one of the five houses for a two and one half hour shift to receive attendees as they show up. We need our LGC members to volunteer for this fundraiser. If you're going to be out of town, it's totally understandable that you cannot help. But if you're going to be in town, and hopefully experiencing the Garden Walk, please consider working a shift as well. You'll be glad you did. This will be an easy fundraiser if you will help us out. To help, contact me at (224) 258-5016 or at wagnerjana60@gmail.com.



All of that being said, I am thrilled to announce that there will be artists at each of the five homes. It is an added feature that is exciting and will sweeten the whole event. Finally, if you haven't already done so, please buy tickets for yourself to use and give some away or tell your friends, family and neighbors about the Garden Walk. Logging onto our website is the only way to purchase advance tickets this year; <https://lincolnshiregardenclub.com/garden-walk>. Every day more tickets are being purchased by members and nonmembers. Our hope is that this year's turnout is bigger than last year's.



A huge component of last year's Garden Walk fundraiser was our Wine Raffle. It raised \$465 at last year's 'Walk in the Shire'. Please contribute a bottle of white, red or sparkling wine with at least a value of \$20 to entice sales of Wine Raffle tickets. You may drop your bottle off at my house, 28 Fox Trail, prior to July 17th. THANK YOU for helping to make our major fundraiser a huge success.

Chelsea Flower Show and England Trip—Monday, May 19—Wednesday, May 28, 2025

We're in, at least those of us that chose to be a part of this incredible opportunity. And the numbers have gone up from 10 to 12 people that will be representing our Garden Club and making this a very easy Fund-raiser. These attendees will be donating \$2,400 to LGC Allocations by attending this trip. It's sure to be an exciting trip enjoyed by all.

Sincerely,

Jana Wagner
VP Ways & Means



New LGC Officers for 2024-25

Thanks to Jeanne Top for opening her lovely home for the June Summer Meeting and to the Hospitality Committee, led by Jan Stefans, for a delightful luncheon. Congratulations to the new Officers of the Lincolnshire Garden Club.



Pictured left to right: Meg Zimmermann, Treasurer; Trish Hughes, Recording Secretary—General Meetings; Nancy Slatin, Corresponding Secretary; Lorrie Hardy, VP of Allocations; Helen Wilson, VP of Programs; Jana Wagner, VP Ways & Means; Kathleen Abdo, President. Not pictured: Nancy Romanchek, Recording Secretary—Board Meetings. On the right, Jana Wagner and Ann Maine at the meeting.

Message from the Editor

Dear Friends,

If you are spending the 4th of July holiday in town, please consider marching in the parade with the Lincolnshire Garden Club float. This year's vehicle is my husband Alan's late father's 1952 Ford F2 Pickup Truck. It will be decorated with flowers, patriotic bunting and flags.



By appearing in the parade the Lincolnshire Garden Club will gain awareness in the community from new residents and potential members. For those marching, feel free to wear your butterfly wings or an LGC green apron. If you don't own an LGC apron, we will bring aprons to borrow. While walking, members will be distributing 500 Zinnia seed packets which were generously donated by JULI. We have stapled a card advertising our garden walk to each seed packet. This gift will be a reminder to attendees of our upcoming "Walk in the Shire" on July 20, 2024.

The parade kicks off at 10 am so please arrive between 9:15 and 9:30 at 45 Londonderry Lane. Londonderry Road will only be accessible from Riverwoods Road. Parking is permitted off Kensington Drive and adjacent side streets (Coventry Lane and Victoria Lane) and at the Community Christian Church on Riverwoods Road. Walkers are encouraged to carpool or be dropped off near the staging site.

Alan, Ella and I hope to see you there!

All the best,

Nancy Slatin

Community Involvement

**Ann Maine and Laura Chilis at
Libertyville Farmer's Market
June 27, 2024**



It was an absolutely gorgeous June day and we had many people stop by our table and pick up information on pollinators, flyers promoting the garden walk, as well as promotional information on our club!

Thank You!

A big THANKS goes to this month's LGC members who created content for The Flower Press:

Kathleen Abdo

Mary Ainger

Laura Chilis

Marj Lundy

Ann Maine

Kay Siess

Jana Wagner

LGC In The News

**The following article appeared in the
Village of Lincolnshire's
Summer Newsletter**



Village Re-Commits to Saving the Monarch Butterfly

Lincolnshire continues its work to help save the monarch butterfly. By committing to the National Wildlife Foundation's Mayors' Monarch Pledge, the Village is creating healthy, sustainable habitats for the monarch butterfly and other pollinators. Below are the steps the Village is taking in 2024.

- Issuing a mayoral proclamation about the decline of the monarch butterfly and the species' need for habitat.
- Engaging with the Lincolnshire Garden Club and backyard gardeners to urge them to plant native milkweeds and nectar-producing plants.
- Hosting or supporting a native seed or plant sale, giveaway or swap.

For resources to help the Monarch Butterfly in your own garden, visit: www.nwf.org/Educational-Resources/Wildlife-Guide/Invertebrates/Monarch-Butterfly

Downy Mildew of Cucurbits—University of Illinois Extension



Downy mildew, caused by *Pseudoperonospora cubensis*, is one of the most important foliar diseases of cucurbits. It has been reported worldwide in production areas where humidity and temperature favor its establishment. Downy mildew occurs in temperate and tropical areas with sufficient leaf wetness periods.

Without adequate control measures, downy mildew can result in major crop losses in cucurbits in both open fields and greenhouses. In Illinois, this disease usually occurs toward the end of the growing season, as the pathogen is blown from the Southern states northward. Symptoms of downy mildew only affect leaves.

Symptoms of downy mildew vary with the host and the environmental conditions. The first symptom is usually the appearance of pale green areas on the upper leaf surface. The pale green areas soon become yellow in color and angular to irregular in shape, bounded by the leaf veins. As the disease progresses, the lesions may remain yellow or become brown and necrotic. During moist weather the corresponding lower leaf surface is covered with a downy, pale gray to purple mildew.

Symptoms on cucumber and squash are angular lesions that are limited by the leaf veins. On watermelon and cantaloupe, symptoms are typically irregular-shaped lesions on the foliage that turn brown rapidly. Infected leaves may experience an upward leaf curl. Symptoms on watermelon and cantaloupe are not as distinctive as on cucumber and squash and could be mistaken for other diseases such as anthracnose.

Control

Control of downy mildew on cucurbits is achieved by planting resistant cultivars, early planting of crops, and/or fungicide sprays. Cucumber cultivars resistant to downy mildew are available. Early plantings for crops for July harvest often escape infection with downy mildew pathogen, while plantings for harvest in August or later in the season are vulnerable. Because of the potential for rapid plant infection, sprays should be initiated on a preventive basis for vulnerable plantings. Fields should be scouted regularly for disease development.

When downy mildew is present, fungicides with systemic activity tend to be more effective than protectants. Using systemic fungicides with protectants will minimize resistant development in the pathogen. A disease-forecasting program is available (www.ces.ncsu.edu/depts/pp/cucurbit). For the update information on controlling cucurbit downy mildew, especially fungicide applications, refer to the Midwest Vegetable Production Guide for Commercial Growers, publication C1373 (<http://id/id-56/>).

Field Trips—Kay Siess

Our summer field trips are open first to LGC members; guests will be placed on a waitlist in the order the email request is received. Those of you who signed up at the June 20th Luncheon need not reply again.

LGC Summer Field Trip #1

Wednesday July 31, 2024

9:30am Bee “Farm” Tour in Deerfield

(Brunch/Lunch is on your own)

LGC members only (guests will be wait-listed)

RSVP by July 19th to Kay Siess: kays4514@yahoo.com

Member Name: _____ Email: _____

Guest (wait list): _____ Email: _____



Deerfield resident Sarah Kettlewell, Field & Forage Bee Co., will take us on a walk of the Deerfield Park District’s Bee Farm. Sarah is a hobby beekeeper and former Wisconsin Honey Queen and will present an introduction to honeybees, including the honeybee lifecycle, pollination, products of the hive and beekeeping.

LGC Summer Field Trip #2

Friday August 9, 2024

11:00 Tour Ragdale House & Gardens \$15

1:00 Lunch* at Everett Farm Restaurant, Lake Forest

LGC members only (guests will be wait-listed)

RSVP by July 19th to Kay Siess: kays4514@yahoo.com

Tour Lunch Member Name: _____ Email: _____

Tour Lunch Guest (wait list): _____ Email: _____



Ragdale is the former country estate of Arts and Crafts architect Howard Van Doren Shaw. This is a rare opportunity to see behind-the-scenes, an artist residency typically closed to the public. The docent guided tour includes: two historic homes, visual-artist studios, exquisite gardens, vistas of 50 acres of virgin prairie, and an introduction to the Shaw family history and the artist residency program that serves 150 artists and authors each year. Ragdale House, originally built in 1897, and the Barn House are listed on the National Register of Historic Places. Shaw became the most recognized designer of country houses in Lake Forest in the early 20th century. He preferred to do the landscaping himself, but also collaborated with renowned landscape architect Jens Jensen. In 1915, Shaw designed Lake Forest’s Market Square which became the first planned shopping center in the United States.

Everett Farm Restaurant is a farm-to-table American restaurant \$\$

840 South Waukegan & Everett Road, Lake Forest IL 60045

<https://everettfarm.com/>. *no separate checks; pay in groups of 3-4, math required.

RSVP by July 19th via email directly to Kay Siess @ kays4514@yahoo.com. The \$15 fee for Ragdale can be paid at the event (cash or check to LGC). In your email to Kay indicate 1) name (member or guest), 2) email address, 3) trip option: Trip #1 Bee Keeper Tour; Trip #2 Ragdale (tour only); Trip #2+ Ragdale & Lunch.

Inspirations



First Caterpillar Sighting—Jana Wagner

Community Outreach



Future Farmers' Markets

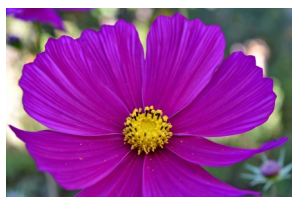
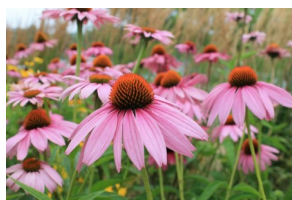
As a reminder, the Lincolnshire Garden Club participates at local Farmers' Markets in the summer and fall to share information on education to protect pollinators.

The following are the Libertyville Farmers Market days for LGC: 7/25, 8/15, 9/12, 10/10.

If any members would like to help man our booth, please contact Marj Lundy at 847-902-6318 or catbird3@comcast.net.

The time is 7:30 am to 1:00 pm but we can decide to come/go at different times if we like. It is a great way to introduce the Lincolnshire Garden Club and raise awareness about pollinators in our community.

Summer Flowers



Blue Star Memorial Garden

New Signage Posts Installed



Stop by our Blue Star Memorial Garden Pollinator Gardens at Spring Lake Park to view the four new sign posts which have been recently installed.

These posts are similar to those at the Chicago Botanic Garden. Their height is easier for reading and they integrate better into the beds.

The Garden Clubs of Illinois, Inc.



To access the Members Only Page
on the GCI Website

Go to the Member Information Tab and enter the Password: **GardenClub22**

LGC Board of Directors

2024-2025

Officers

President	Kathleen Abdo
VP Ways & Means	Jana Wagner
VP Programs	Helen Wilson
VP Allocations	Lorrie Hardy
Recording Secretary—General Meetings	Trish Hughes
Recording Secretary—Board Meetings	Nancy Romanchek
Corresponding Secretary	Nancy Slatin
Treasurer/Asst. Secretary	Meg Zimmermann

Standing Committees

Community Beautification: Mary Ainger, Jan Stefans
Depke: Ann Maine (head), Jan Stefans
Environmental Awareness: Ann Maine
Field Trips: Kay Siess
Garden Therapy: Kathleen Abdo, Meg Zimmermann
Garden Clubs of Illinois Liaison: Nancy Slatin
Historian: Barb Gilman
Hospitality:
Membership: Lori Hartnett, Jan Shapiro
Newsletter: Nancy Slatin
Parliamentarian: Helen Wilson
Plant Education: Kay Siess
Pollinator: Marj Lundy
Social Media: Lorrie Hardy
Web Site: Lorrie Hardy
Weed and Wine: Jan Stefans
Women's Residential Services:
Yearbook: Meg Zimmermann

Social Media

Website: <https://lincolnshiregardenclub.com>

Facebook: <https://facebook.com/LincolnshireGardenClub>

Instagram: <https://www.instagram.com/lincolnshiregardenclub/?hl=en>

OUR MISSION

The mission of the Lincolnshire Garden Club is to provide financial support to promote community beautification, nature restoration, environmental responsibility and to further the education of members and the public in the fields of ecology and conservation, home gardening, horticulture, landscape, and floral design.

