

# XROCK CONSTRUCTION

*XRock Investments, Work Construction Limited*



## ***Building & Civil Engineering***

***Address*** ***No" 1 b , Dantunku Road, Nasarawa, GRA, Kano State***

***Phone Nigeria*** ***+234803-4003955***

***Cellular*** ***+234809-1500006***

***Phone Lebanon*** ***+9613610706***

***Website*** ***<http://www.xrockconstruction.com>***

***Email*** ***[info@xrockconstruction.com](mailto:info@xrockconstruction.com)***

***Email*** ***[imad@xrockconstruction.com](mailto:imad@xrockconstruction.com)***

***Personal Email*** ***[imaddeen@yahoo.com](mailto:imaddeen@yahoo.com)***

### ***Our Bank Details :***

*FCMB First City Monument Bank PLC.*

*Duste 2 branch,*

*12A/13A, Kiyawa Road, Duste Jiggawa Satate*

*Account Number :1993891014*

*Sort Code : 214261965*

## *XRock Construction Table of Contents*

<i>1. AREAS OF SPECIALISATION</i> .....	3
<i>2. PROJECT &amp; CONSTRUCTION MANAGEMENT</i> .....	3
<i>3. ECONOMICS AND COST</i> .....	4
<i>4. CIVIL STRUCTURAL ENGINEERING SERVICES</i> .....	4
<i>5. CIVIL ENGINEERING WORKS TERMS OF REFERENCE</i> .....	5
<i>6. TERMS OF REFERENCE</i> .....	5
<i>7. INDICATION OF COST</i> .....	6
<i>8. CONSTRUCTION AND INSTALLATION STAGE</i> .....	6
<i>9. SPECIAL FEATURES</i> .....	7
<i>10. TRAINING</i> .....	8
<i>11. PROJECT MANAGEMENT</i> .....	8
<i>12. FINANCIAL AND SOCIAL NETWORK RESOURCES</i> .....	9
<i>13. SAFETY POLICY</i> .....	10
<i>14. CORPORATE RESPONSIBILITY</i> .....	11
<i>15. PLANT AND MACHINERY</i> .....	12
<i>16. OUR BOARD OF DIRECTORS</i> .....	13

## **1. AREAS OF SPECIALISATION.**

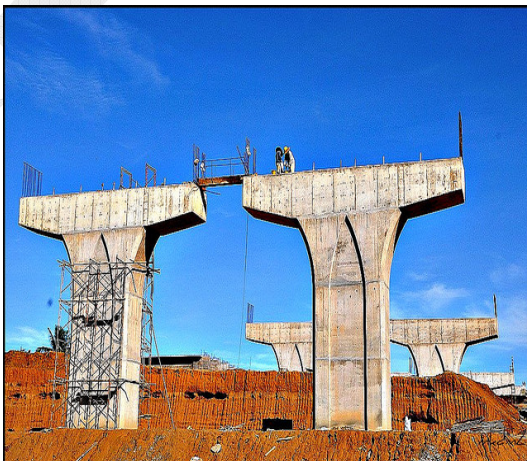
*XRock Investments, Work Construction Limited is a private construction company established on 2008 accumulating a huge historical private and public projects in its record , including works on most of the prestigious and specialist projects in International region such as Lebanon and Nigeria or Nigerian States as Lagos ( Lagos, Ikeja) , Bayelsa State (Yenagoa ) , Imo Sate (Owerri) , Edo Sate ( Benin City ) , Sokoto State (Sokoto) , Yobe State ( Damaturu) and Kano State*

*Xrock Construction undertakes general construction and renovation works including the architecture and interior design, also our company is responsible for soft and hard infrastructure operated by the public societies or private enterprises such as Roads, highways, water supply, electrical plans, private or public swimming pools and all construction projects subject to the environment conditions. During these years of experience we have exceeded billions of naira turn over.*

## **2. PROJECT & CONSTRUCTION MANAGEMENT.**

***Project and Construction Management takes in consider always the essential points.***

*a) Managing the constraints of time, cost and scope is critical to construction project success. Acquire new techniques for managing projects within these constraints. Learn to set up project metrics,*



*b) Provide accurate forecasts and prioritize project scope for construction projects.*

*c) Project management for us is to have the ultimate responsibility*

*for the successful delivery of projects in construction. Explore the skills and techniques required of the project manager to navigate through all phases of the construction project, from inception through completion, and be able to apply appropriate control systems to troubled projects.*

### **3. ECONOMICS AND COST.**

*Our engineers and work team are working to reduce our client's economical situation and needs.*

- a) Cost benefits analysis.*
- b) Constructional jurisdiction and legal constraints.*
- c) Contracts between project partners.*
- d) Construction insurance.*
- e) Environmental impact report as required by legislation on health and safety of work.*



*XRock Invt. Construction & Work Ltd. Has maintained a legacy of innovative leadership especially in the area of product finish and this has led to the development of a range of thoroughly and most comprehensively tested array of quality products.*

*We guarantee our clients quality value added services.*

### **4. CIVIL STRUCTURAL ENGINEERING SERVICES.**

#### **TECHNICAL SERVICES:**

*Staffed with qualified and experienced engineers and related professionals*

*XRock Invt. Construction & Work Ltd. Is equipped with contemporary technology in computer aided design "CAD". The technical office renders*

*professional advice and assistance with staffed having qualification and experienced engineers and related professionals, XRock Invt. Construction & Work Ltd. Is equipped with contemporary technology in computer aided design "CAD". The technical office renders professional advice and using:*



- a) *Design.*
- b) *Structural analysis and material application.*

- c) *Standards*
- d) *Quality control*

## **5. CIVIL ENGINEERING WORKS TERMS OF REFERENCE**

### ***PRODUCTION MANAGEMENT STUDIES***

- a) *Establishment of optimal dimension and conditions for industrial, commercial and public buildings.*
- b) *Grouping of spaces to provide optimal movements and transport lines for people and materials.*

## **6. TERMS OF REFERENCE**

*XRock Invt. Construction & Work Ltd. Embarks on preliminary studies and terms of reference in the following:*

- a) *Technical and economic feasibility studies.*
- b) *Technical and economic aspects of the location and site chosen.*
- c) *Translation of functional programs into architectural and structural design.*

## 7. INDICATION OF COST

### 1. Design Stage One

a) *General Master plan-preliminary and final designs for buildings and plants.*

b) *Selection of construction methods, building materials and technical equipment.*

c) *Alternative plans, value analysis and cost estimates and budgeting*



### 2. Design Stage Two

a) *Tender documents and tender drawings*

b) *Architectural drawings, electrical and mechanical drawings*



## 8. CONSTRUCTION AND INSTALLATION STAGE

a) *Construction / supervision of the work's quality control, cost, testing and inspection.*

b) *Preparation of interim valuation, pricing and documentation of variation orders.*



- c) *Monitoring the activities of sub-contractors/contractors and suppliers.*
- d) *Preparation of final accounts and delivery of jobs within the agreed time frame.*

## 9. SPECIAL FEATURES

*A distinguishing feature of our installed capacity and activities is that we offer a wide scope of work to meet the specific needs of our clients. These range from feasibility studies, basic planning, design construction work/ test run and labor supply. Our expertise in road / building construction, electrical installation/jetty/shore protection and pipeline construction is noteworthy in the construction and allied industry.*



*a) XRock Invt. Construction & Work Ltd. is well positioned to respond to the growing sophistication and diversification necessary for growth in the future.*

*b) XRock Invt. Construction & Work Ltd. Currently has a competitive edge which put us at a vantage position.*

- c) *In carrying out a project at XRock Invt. Construction & Work Ltd. We deploy our technical resources by setting up project teams to handle the various tasks involved in this wise related project management activities such as project planning, schedule control cost and quality control are performed under unified concepts.*



## 10. TRAINING

- a) *The XRock Invt. Construction & Work Ltd. Team of engineers provide training in the area of process principles, operating procedures emergency procedures, handling of instrumentation and maintenance and management of plants.*
- b) *The XRock Invt. Construction & Work Ltd. Maintenance division develops and executes optimally designed plans to inspect, repair, replace and improve individual equipment with the support of the engineering support of the engineering departments*



## 11. PROJECT MANAGEMENT



*On the Board of XRock Invt. Construction & Work Ltd. are experienced Nigerians of proven character and integrity who have excelled in individual careers. These tested, trusted and respected citizens of this country are saddled with determining the general policy direction of :XRock Invt. Construction & Work Ltd.*



*Project management for us is important, As it was consisted mainly of collecting metrics and project data for evaluation, then making adjustments in order to increase productivity and efficiency. For our company Project management is also responsible for managing human capital (making sure that a project had enough "people" to get all tasks completed).*



*With the rapid proliferation of technology, the importance of project management has increased exponentially in terms of the tasks required of a project manager, as well as the*

*knowledge necessary to perform these tasks and projects.*

## **12. FINANCIAL AND SOCIAL NETWORK RESOURCES**

a) *Over the years XRock Invt. Construction & Work Ltd. Has developed such close relationship with reputable banks and other institutions based on trust and integrity that we are able to readily obtain enough financial support when the need arises to augment our working capital. Actually, we are in the process of providing an asphalt plant and crusher plant, so as to be independent and to deliver our projects on time.*



b) *XRock Invt. Construction & Work Ltd. Undertakes to maintain good working relations with any community where it operates. Since our company is working mostly in regions containing different cultures and religions we always respect and understand all sorts of opinions and*

*we always work to satisfy our clients and their society .*

c) *XRock Invt. Construction & Work Ltd. Treats host communities as partners in progress. This policy has been mutually rewarding.*

d) *Our Bank details :*

***FCMB First City Monument Bank PLC.***

*Duste 2 branch,*

*12A/13A, Kiyawa Road, Duste Jiggawa Satate*

*Account Number :1993891014*

*Sort Code : 214261965*

### **13. SAFETY POLICY**

*It is the cardinal principle of XRock Invt. Construction & Work Ltd. to maintain very high safety standards. This has resulted, so far, in a zero percent field casualty rate. XRock Invt. Construction & Work Ltd. Ensures that:*



- a) *Workers are routinely trained in field safety standards needed to survive hazardous field maneuvers.*
- b) *Hazard analysis is given prior to commencement of any project in relation to environmental, field and tools related risks.*
- c) *On the standard health security instruction, our work team and staff have the greatest involvement and exercise the greatest control and direction over a construction project and all persons working on it. Therefore, we ensure compliance with all prescribed safety requirements. It is also the one of our obligation to take every precaution reasonable on the project for the protection of each worker to ensure all workers follow policies and safe work procedures.*

*d) With increasingly complex designs, techniques and materials, today's construction projects have significant safety and environmental implications. Learn to be both safety and environmentally conscious throughout all phases of the construction process, extending throughout the lifetime of the building. Understand and learn to apply current safety and environmental regulations.*

## **14. CORPORATE RESPONSIBILITY**



*XRock Invt. Construction & Work Ltd. as a good corporate body is aware that it has corporate responsibilities to discharge to improve the standard of life of the average Nigerian. Numerous Nigerians have benefited and many more are still currently benefiting from the higher education scholarship scheme of: XRock Invt. Construction & Work Ltd.*

*Corporate Social Responsibility is the continuing commitment by business to behave ethically and contribute to economic development while improving the quality of life of the workforce and their families as well as of the local community and society at large*

*The same report gave some evidence of the different perceptions of what this should mean from a number of different societies across the world.*

*We're streamlining the ways in which we govern our Corporate Responsibility portfolio. Our years of experience describe our governance structure which includes oversight from our leadership team and an advisory group of engineers.*

## 15. PLANT AND MACHINERY

S/N	DESCRIPTION	Brand	QTY
1	Bulldozer D8K " New", D7	Caterpillar	8
2	Bulldozer D7G	Caterpillar	7
3	Wheel Loader " payloader" 950B New	Caterpillar	5
4	Wheel Loader " payloader" 966D	Caterpillar	6
5	Excavator 219D New , Excavator 225 BLC	Caterpillar	4
6	Grader 14G	Caterpillar	6
7	Grader 12G	Caterpillar	7
8	Plante compactor	Dynapac, Vibromax 1501	5
9	Sheep foot roller 815	Caterpillar	3
10	Water tanker 10,000 Liters	Mercedes	6
11	Tipping truck	Mack	15
12	Tractor head	Mack	13
13	Tipping bucket	Miller	9
14	Lowbed	Mack _ Kaiser	5
15	Dumper 1.6m3		6
16	Transit mixer 8m3	Mack	7
17	Stationary concrete mixer	Diala	7
18	Crane 20 Ton	Grove	3
19	Finisher	Blaw Knox	4
20	Chipping spreader "surface dressing"	Italy	3
21	Steel drum roller		3
22	Tyre roller	Albaret	3
23	Bitumen storage tank 30,000 liters	Italy	8
24	Diesel storage tank 30,000 liters	Local "Nigeria"	5
25	Water storage tank 4000 liters	Local "Nigeria"	4
26	Concrete vibrator	Honda eng.	10
27	Generator 40 KVA	Perkins	4
28	Air compressor	Atlas_copco	4
29	Welding machine	Lincoln	3
30	Survey equipment		1 set
31	Workshop tools		Many
32	Pick up	Toyota Hi_Lux	14
33	Staff Bus	Toyota	6

## 16. OUR BOARD OF DIRECTORS

***Imad Eddine Mouslumani***

***Managing Director - Civil Engineer***

***Telephone Nigeria***

**2348034003955**

***Telephone Lebanon***

**9613610706**

***E-mail***

**[info@xrockconstruction.com](mailto:info@xrockconstruction.com)**

***E-mail***

**[imad@xrockconstruction.com](mailto:imad@xrockconstruction.com)**



***Khalil Mouslumani***

***Chairman - Architect Engineer***

***Telephone***

**2348037869442**

***E-mail***

**[khalil@xrockconstruction.com](mailto:khalil@xrockconstruction.com)**



***Hassan Mouslumani***

***Civil Engineer***

***Telephone***

**2348075991989**

***E-mail***

**[hassan@xrockconstruction.com](mailto:hassan@xrockconstruction.com)**

